

**BENCHMARKS:**  
 RR spike in asphalt, SW COR., N1/2, SW1/4, Sec. 34, TWP. 26-S, R-2-E. Elev. = 1400.59 NAVD88

RR spike in E. face of power pole, 174± N. of S. line, N1/2, SW1/4 & 49± E. of W. line, SW1/4, Sec. 34, TWP. 26-S, R-2-E. Elev. = 1398.64 NAVD88

RR spike in S. face of power pole, 294± S. of N. line, SW1/4, & 48± E. of W. line, SW1/4, Sec. 34, TWP. 26-S, R-2-E. Elev. = 1386.14 NAVD88

FIRE HYDRANTS REQUIRED				
STATION	BURY LINE ELEVATION	TOP OF PIPE ELEVATION	FIRE HYDRANT BURY REQUIRED*	VALVE STEM EXT. REQUIRED (ft)*
28+15.01	1378.35	1372.81	6.5	-

WL Sta. 28+05.01, Line 1, 10' Lt.  
 BL Sta. 52+50.35, 40.00' Lt.  
 Connect to Existing 2" PVC COW Water Line  
 Plug & Abandon 2" PVC Water Line (S)

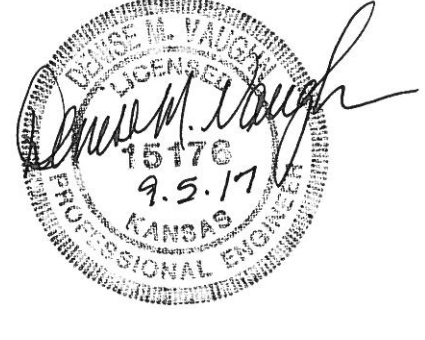
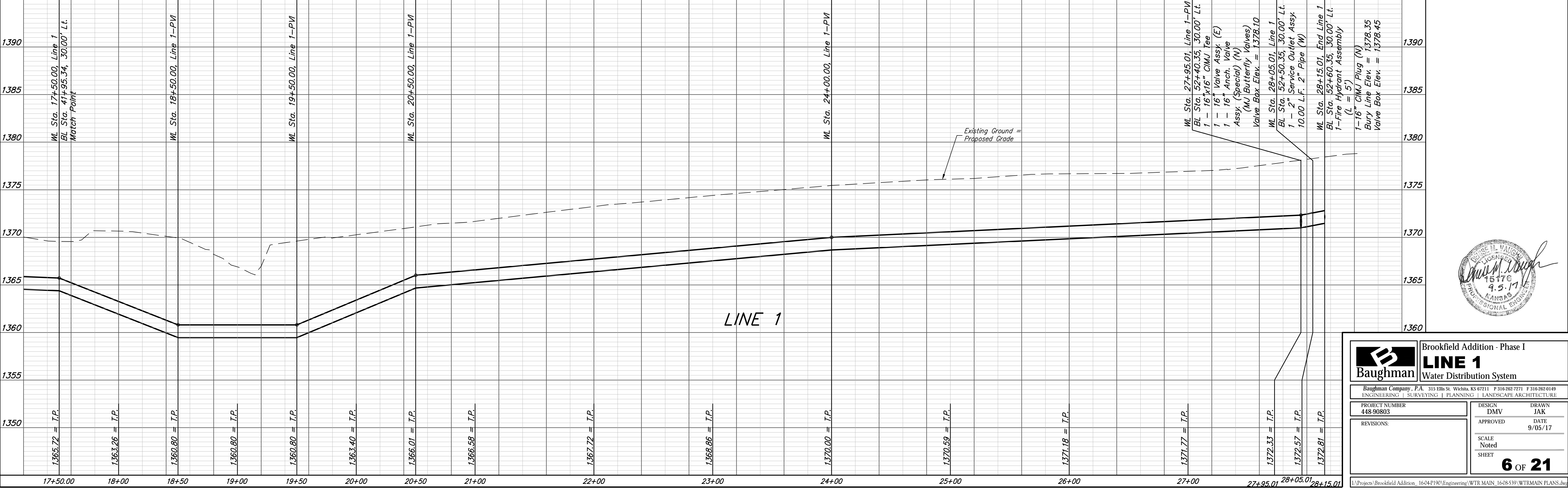
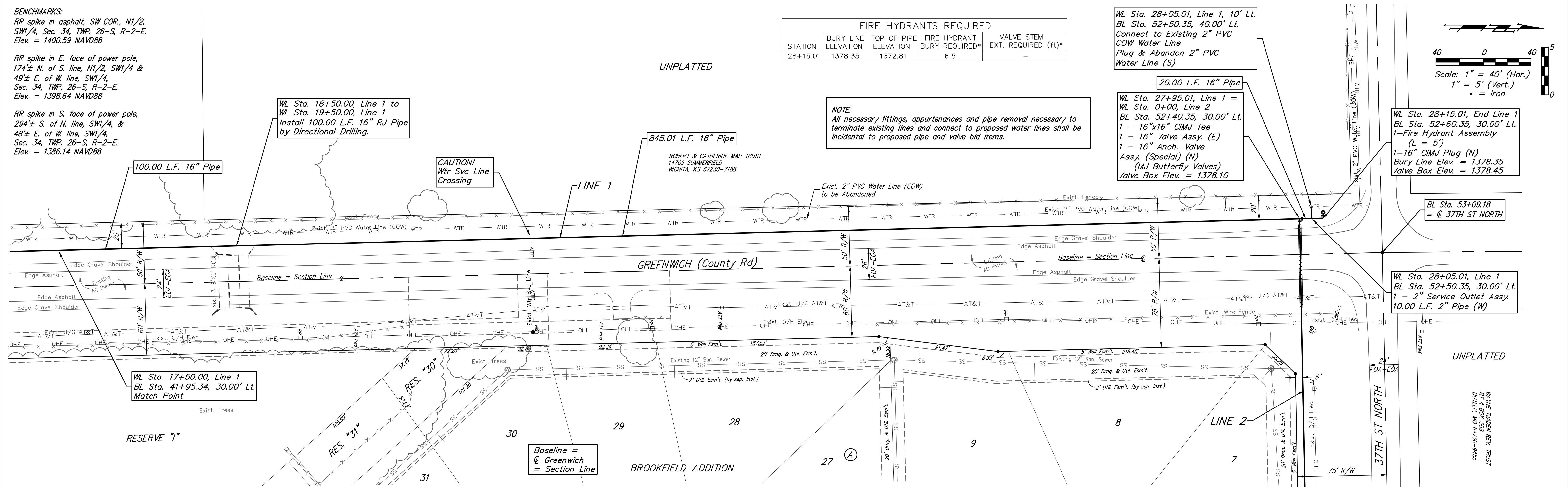
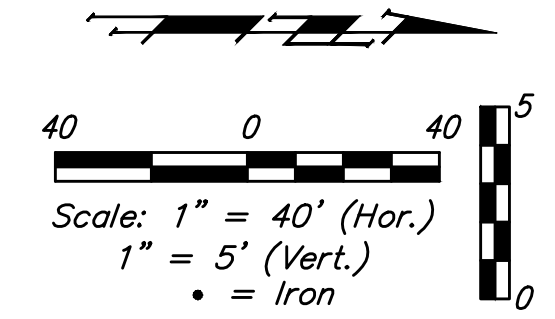
20.00 L.F. 16" Pipe  
 WL Sta. 27+95.01, Line 1 = WL Sta. 0+00, Line 2  
 BL Sta. 52+40.35, 30.00' Lt.  
 1 - 16"x16" CIMJ Tee  
 1 - 16" Valve Assy. (E)  
 1 - 16" Anch. Valve Assy. (Special) (N)  
 (MJ Butterfly Valves)  
 Valve Box Elev. = 1378.10

WL Sta. 28+15.01, End Line 1  
 BL Sta. 52+60.35, 30.00' Lt.  
 1 - Fire Hydrant Assembly (L = 5')  
 1 - 16" CIMJ Plug (N)  
 Bury Line Elev. = 1378.35  
 Valve Box Elev. = 1378.45

BL Sta. 53+09.18 = 37TH ST NORTH

WL Sta. 28+05.01, Line 1  
 BL Sta. 52+50.35, 30.00' Lt.  
 1 - 2" Service Outlet Assy. 10.00 L.F. 2" Pipe (W)

**NOTE:**  
 All necessary fittings, appurtenances and pipe removal necessary to terminate existing lines and connect to proposed water lines shall be incidental to proposed pipe and valve bid items.



**Baughman** Brookfield Addition - Phase I  
**LINE 1**  
 Water Distribution System

Baughman Company, P.A. 315 Ellis St. Wichita, KS 67211 P 316-262-7271 F 316-262-0149  
 ENGINEERING | SURVEYING | PLANNING | LANDSCAPE ARCHITECTURE

PROJECT NUMBER 448-90803	DESIGN DMV	DRAWN JAK
REVISIONS:	APPROVED	DATE 9/05/17
SCALE Noted		SHEET 6 OF 21

Projects\Brookfield Addition\_1604P190\Engineering\WTR MAIN\_1608-539\WTRMAIN PLANS.dwg