

BENCHMARKS:
 RR spike in asphalt, SW COR., N1/2, SW1/4, Sec. 34, TWP. 26-S, R-2-E. Elev. = 1400.59 NAVD88
 RR spike in E. face of power pole, 174± N. of S. line, N1/2, SW1/4 & 49± E. of W. line, SW1/4, Sec. 34, TWP. 26-S, R-2-E. Elev. = 1398.64 NAVD88
 RR spike in S. face of power pole, 294± S. of N. line, SW1/4, & 48± E. of W. line, SW1/4, Sec. 34, TWP. 26-S, R-2-E. Elev. = 1386.14 NAVD88

WL Sta. 0+00, Begin Line 2
 = WL Sta. 27+95.01, Line 1
 BL Sta. 0+70.07, 68.85' Rt.

BL Sta. 1+00.00
 = ϕ GREENWICH

WL Sta. 0+05.00, Line 2 to
 WL Sta. 0+75.00, Line 2
 Install 70.00 L.F. 28" Steel Casing
 Pipe by Boring and Jacking.

Remove, do not replace,
 existing fence only as
 necessary for construction.
 Cost to be included in bid
 item "Site Clearing"

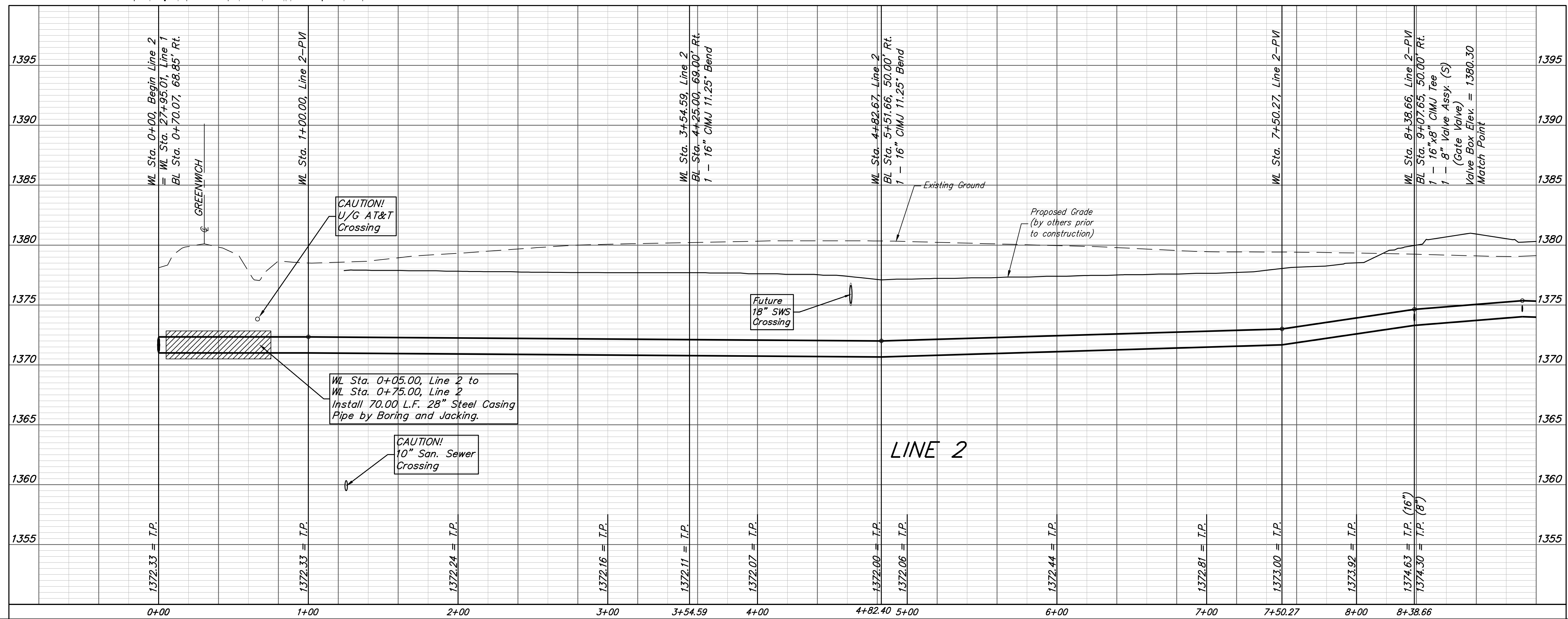
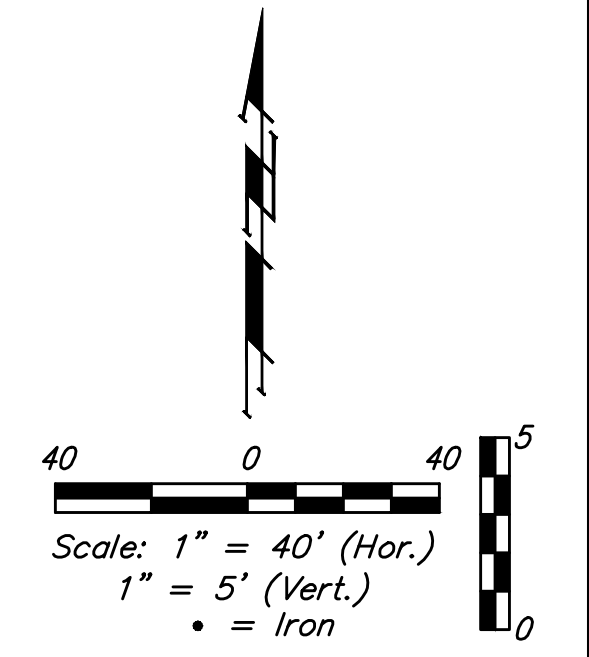
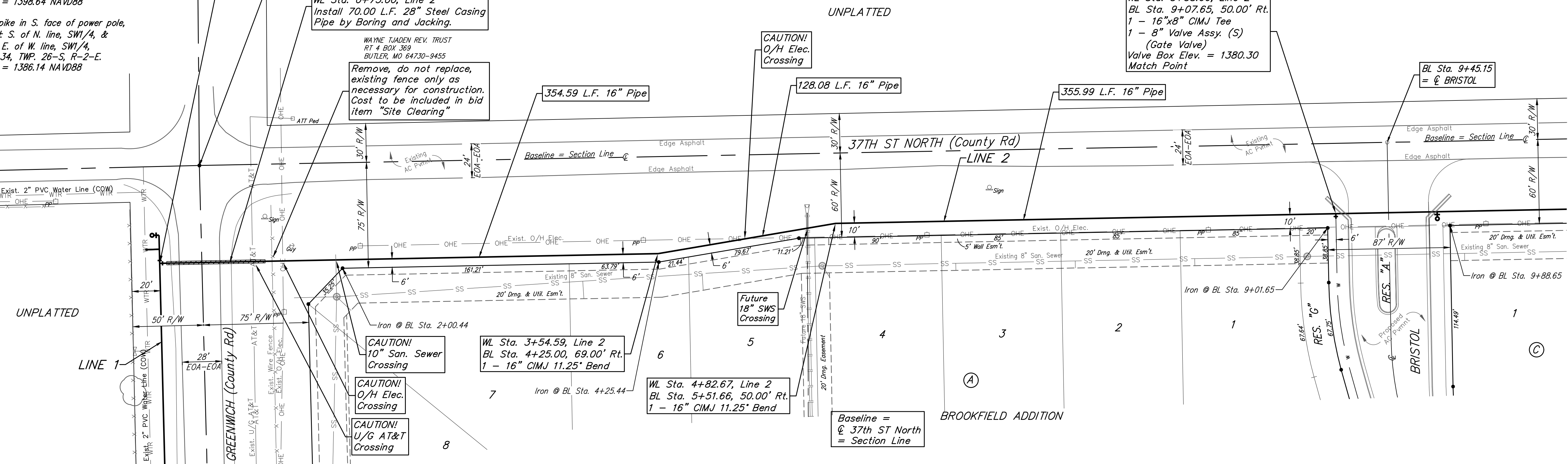
WAYNE TADEN REV. TRUST
 RT 4 BOX 369
 BUTLER, MO 64730-9455

NOTE:
 Cost of 16" Pipe within Steel Casing Pipe shall be bid as Pipe, WL
 16" per L.F. Cost of Boring and Jacking shall be included in bid
 item Pipe, Casing (28" ID min.).

CAUTION!
 O/H Elec.
 Crossing

WL Sta. 8+38.66, Line 2
 BL Sta. 9+07.65, 50.00' Rt.
 1 - 16"x8" CIMJ Tee
 1 - 8" Valve Assy. (S)
 (Gate Valve)
 Valve Box Elev. = 1380.30
 Match Point

BL Sta. 9+45.15
 = ϕ BRISTOL



Baughman Brookfield Addition - Phase I
LINE 2
 Water Distribution System

Baughman Company, P.A. 315 Ellis St. Wichita, KS 67211 P 316-262-7271 F 316-262-0149
 ENGINEERING | SURVEYING | PLANNING | LANDSCAPE ARCHITECTURE

PROJECT NUMBER 448-90803	DESIGN DMV	DRAWN JAK
REVISIONS:	APPROVED	DATE 9/05/17
	SCALE Noted	SHEET 7 OF 21

Projects\Brookfield Addition_1604P190\Engineering\WTR MAIN_1608-539\WTRMAIN PLANS.dwg