

**BENCHMARKS:**  
 RR spike in asphalt, SW COR., N1/2, SW1/4, Sec. 34, TWP. 26-S, R-2-E.  
 Elev. = 1400.59 NAVD88

RR spike in E. face of power pole,  
 174± N. of S. line, N1/2, SW1/4 &  
 49± E. of W. line, SW1/4,  
 Sec. 34, TWP. 26-S, R-2-E.  
 Elev. = 1398.64 NAVD88

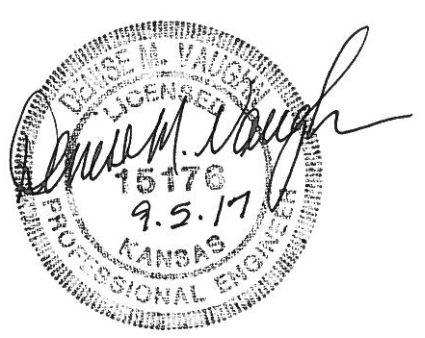
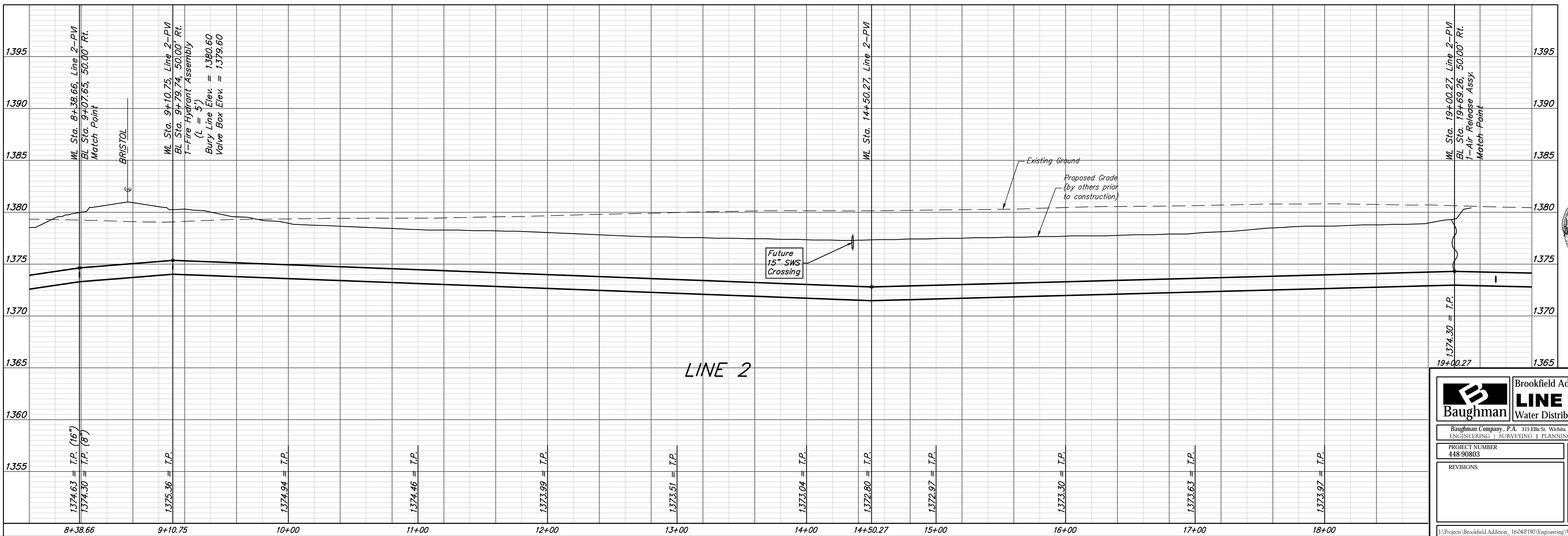
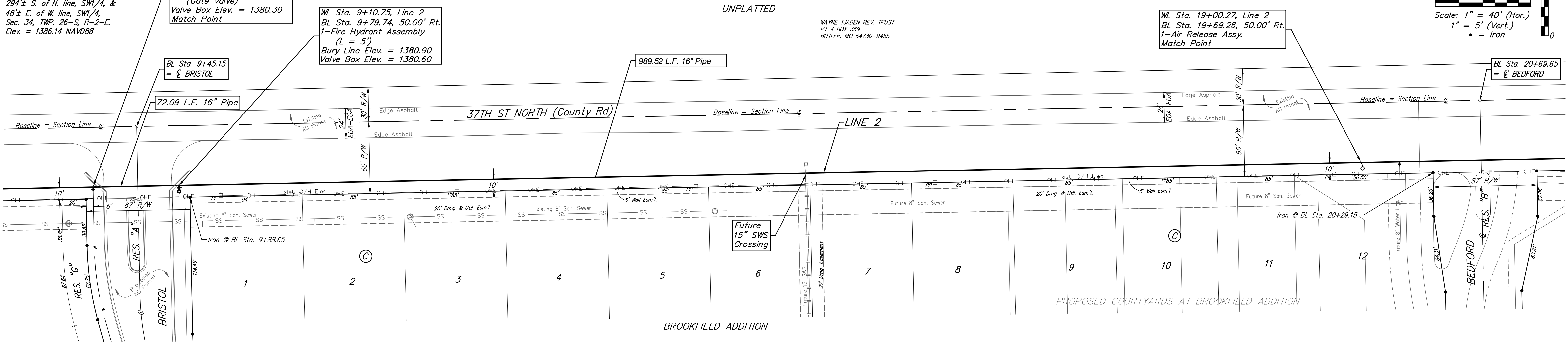
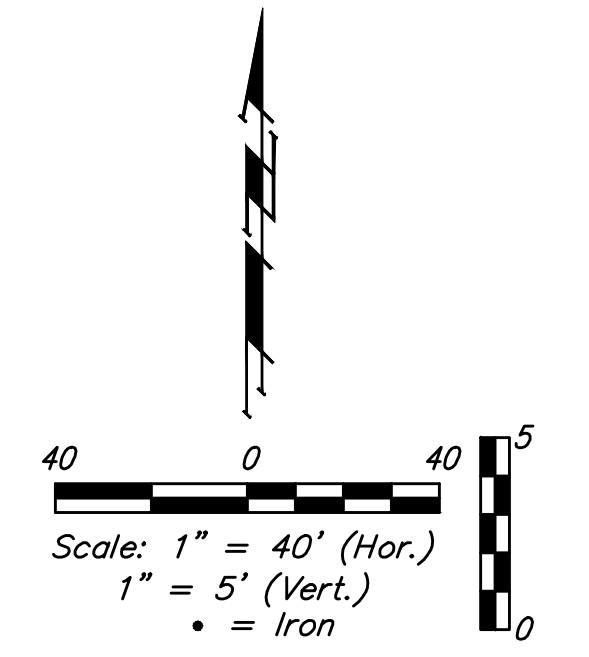
RR spike in S. face of power pole,  
 294± S. of N. line, SW1/4, &  
 48± E. of W. line, SW1/4,  
 Sec. 34, TWP. 26-S, R-2-E.  
 Elev. = 1386.14 NAVD88

FIRE HYDRANTS REQUIRED				
STATION	BURY LINE ELEVATION	TOP OF PIPE ELEVATION	FIRE HYDRANT BURY REQUIRED*	VALVE STEM EXT. REQUIRED (ft)*
9+10.75	1380.90	1375.36	6.5	-

WL Sta. 8+38.66, Line 2  
 BL Sta. 9+07.65, 50.00' Rt.  
 1 - 16"x8" CIMJ Tee  
 1 - 8" Valve Assy. (S)  
 (Gate Valve)  
 Valve Box Elev. = 1380.30  
 Match Point

WL Sta. 9+10.75, Line 2  
 BL Sta. 9+79.74, 50.00' Rt.  
 1 - Fire Hydrant Assembly  
 (L = 5')  
 Bury Line Elev. = 1380.90  
 Valve Box Elev. = 1380.60

WL Sta. 19+00.27, Line 2  
 BL Sta. 19+69.26, 50.00' Rt.  
 1 - Air Release Assy.  
 Match Point



**Baughman**

Brookfield Addition - Phase I

**LINE 2**

Water Distribution System

---

Baughman Company, P.A. 315 Ellis St. Wichita, KS 67211 P 316-262-7271 F 316-262-0149  
 ENGINEERING | SURVEYING | PLANNING | LANDSCAPE ARCHITECTURE

PROJECT NUMBER 448-90803	DESIGN DMV	DRAWN JAK
REVISIONS:	APPROVED	DATE 9/05/17
	SCALE Noted	
	SHEET	

8 OF 21

I:\Projects\Brookfield Addition\_1604P190\Engineering\WTR MAIN\_1608-539\WTRMAIN PLANS.dwg