

GENERAL NOTES:

- The Contractor shall comply with all applicable safety regulations. All construction shall be completed following current City Standard Specifications and Special Provisions.
- Contractor will be required to provide notice to utility companies a minimum of seventy-two (72) hours prior to any excavation, as follows:

Kansas One-Call 687-2470

The Contractor must notify the following in case of an emergency:

AT&T	1-800-246-8464
Black Hills Energy	1-800-694-8989
City of Wichita Water & Sewer	1-316-219-8921
City of Wichita Stormwater	1-316-268-4090
City of Wichita Traffic	1-316-268-4034
Cox Communications	1-888-249-3530
Kansas Gas Service	1-888-482-4950
Westar Energy	1-800-544-4857

- Utility service lines, poles, etc. are to be adjusted as necessary by others prior to construction unless the plans specifically call for their adjustment by the Contractor or unless the plans specifically identify a utility to be adjusted by its owner during construction. Existing utilities and their location, as shown on the plans, represent the best information obtainable for design. The Contractor will be required to work around existing utilities within the right-of-way which do not conflict with proposed construction.

- Rubble from the removal of miscellaneous structures and excess excavation which is to be wasted shall be disposed of on sites to be provided by the Contractor. These sites shall be approved by the Engineer as to suitability, appearance and site location. Locations, in the opinion of the Engineer, that will leave an unsightly appearance will not be approved. All disposal sites must be approved by the Kansas Department of Health and Environment. Material either stockpiled or disposed of in a flood plain would require a Kansas State Board of Agriculture permit. Any material dumped in waters of the United States or wetlands is subject to U.S. Corps of Engineers permitting regulations. Any material buried or stockpiled beyond approved construction limits will require additional archaeological investigations unless buried in a previously approved borrow location.

- Trees and shrubs in public right-of-way which are in direct conflict with proposed new construction shall be removed by the Contractor with the City Engineer's approval. Trees and shrubs which are not in direct conflict with proposed new construction shall be saved and protected from damage.

- The Contractor shall give all property owners and/or tenants of developed property abutting the construction of this project a minimum of ten (10) days notice prior to start of construction.

- The Contractor shall be responsible for preserving property irons. The Contractor will be required to re-establish any property irons which are damaged or destroyed by his construction operations. Such irons shall be re-established by a licensed land surveyor in accordance with state laws.

- The Engineering Division shall field locate water valve one time during construction when requested by the Contractor. It shall be the Contractor's responsibility to preserve such field locations during the construction process. Water valves, valve boxes or fire hydrants damaged during construction shall be repaired by Contractor at his own expense. Valve boxes and water meters within the project limits shall be adjusted to match field grades by the contractor.

- The Contractor shall notify the inspecting engineer and Tom Mason at 316-268-4574 with the City of Wichita with the anticipated construction start date and notify them of project completion. Staking and inspection for this project will be the responsibility of the Contractor.

- If traffic will be impacted by construction, a traffic control plan must be submitted and approved by the City Traffic Engineer, Brian Coon at traffic@wichita.gov before construction can begin. The Contractor shall be responsible for all traffic control measures to facilitate construction. All construction zone markings and signage shall conform to the latest version of the Manual on Uniform Traffic Control Devices (MUTCD) as published by the US Dept. of Transportation, Federal Highway Administration. All costs associated with construction markings and signage shall be the Contractors responsibility.

- All elevations shown are NAVD 88.

- All areas disturbed during construction that will not be under proposed pavement shall be restored to match existing conditions.

- Any sidewalk, drive approach, or street pavement removed to construct project must have a pavement cut permit and be replaced by the City contractor. Permits can be obtained by calling 316-268-4501 or 316-268-4480.

- City maintenance of storm sewer ends at the last structure in the easement or right-of-way.

- A portion of excess excavated material shall be mounded around manholes which extend more than one (1) foot above the existing ground. Such mound shall be constructed with new development a six (6) foot diameter flat top with 4 to 1 side slopes down to the original ground. The elevation of the flat top of the mound shall be 0.4 foot below the top to the manhole.

- Geotechnical report available upon request.

- Contractor shall limit the extent of trench openings overnight and weekends to less than 50 feet.

- The inspecting firm shall submit to the City Stormwater Maintenance Division a digital copy of the CCTV inspection of the conduits and structures following construction. The digital file formation shall be compatible with the City input template. A copy of the template is available upon request at 316-268-4090.

- The Contractor shall protect from damage and support existing utilities through construction as approved by the utility owner and the Engineer at the contractors expense.

- All existing and proposed erosion control measures including silt fencing, erosion control mat, straw bales, inlet barriers, and const. entrance shall be maintained throughout construction by the contractor and until project is accepted by the City of Wichita. The on-site engineer shall complete weekly reports on the status of erosion control measures. The contractor shall be required to comply with maintenance and/or replacement of erosion control measures as determined by the on-site engineer until project is accepted by City of Wichita. Maintenance and/or replacement of erosion control measures to be paid by L.S. bid item "Site Restoration".

- All areas disturbed during construction shall be seeded, mulched, and fertilized as follows (Permanent Seeding):

Seed: Kansas Premium Fescue Blend: 8 lbs./1000 sq. ft.

Mulch: Prairie Hay: 2 tons/acre
Fertilizer: 12-24-12: 850 lbs./acre

All costs associated with seeding, mulching, and fertilizing shall be included in bid item "Seeding". All seeding operations shall conform to City of Wichita Standard Specifications.

- The Contractor shall not begin work on the project until the Project Inspector is assigned and on site. Any work completed without inspection will be required to be uncovered for inspection at the Contractor's expense.

- Structure location coordinates are to the center of structure and are to be located with a coordinate datum per the provided control points.

- BMP Details SW-501 thru SW-505, & Stormwater manhole SW-301 are available at City of Wichita web site at <http://www.wichita.gov/Government/Departments/PWU/Pages/Regulations.aspx>

BENCHMARKS

SITE BENCHMARK #3
Mag Nail with Washer, 225' west of East curb Southwest parking lot.
Elevation=1356.17 (NAVD 88)

SITE BENCHMARK #4
Mag Nail with Washer, South parking stall in Southeast parking lot, north of football field entrance.
Elevation=1353.64 (NAVD 88)

SITE BENCHMARK #5
Mag Nail with Washer, east side of perimeter drive, east side of building.
Elevation=1359.68 (NAVD 88)

SITE BENCHMARK #7
"X" Chiseled on Sidewalk, SE corner of 37th & Tyler roads.
Elevation=1352.75 (NAVD 88)

STORM SEWER IMPROVEMENTS

to serve

3701 N. Tyler Road

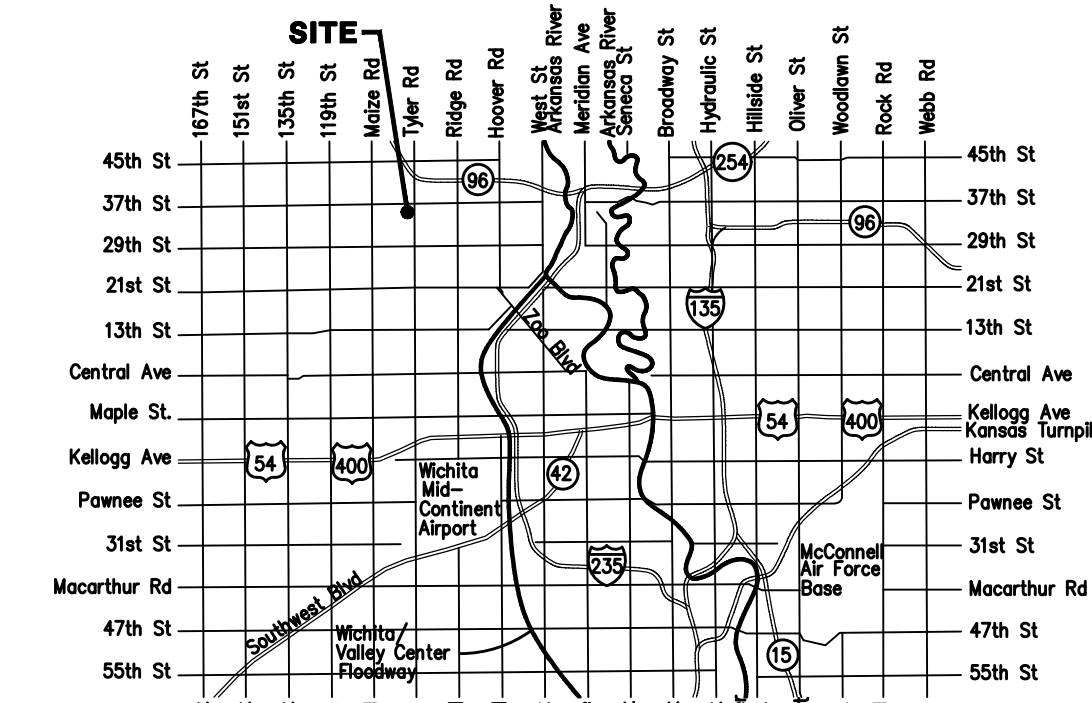
Maize School South Campus Addition

CITY OF WICHITA, KANSAS

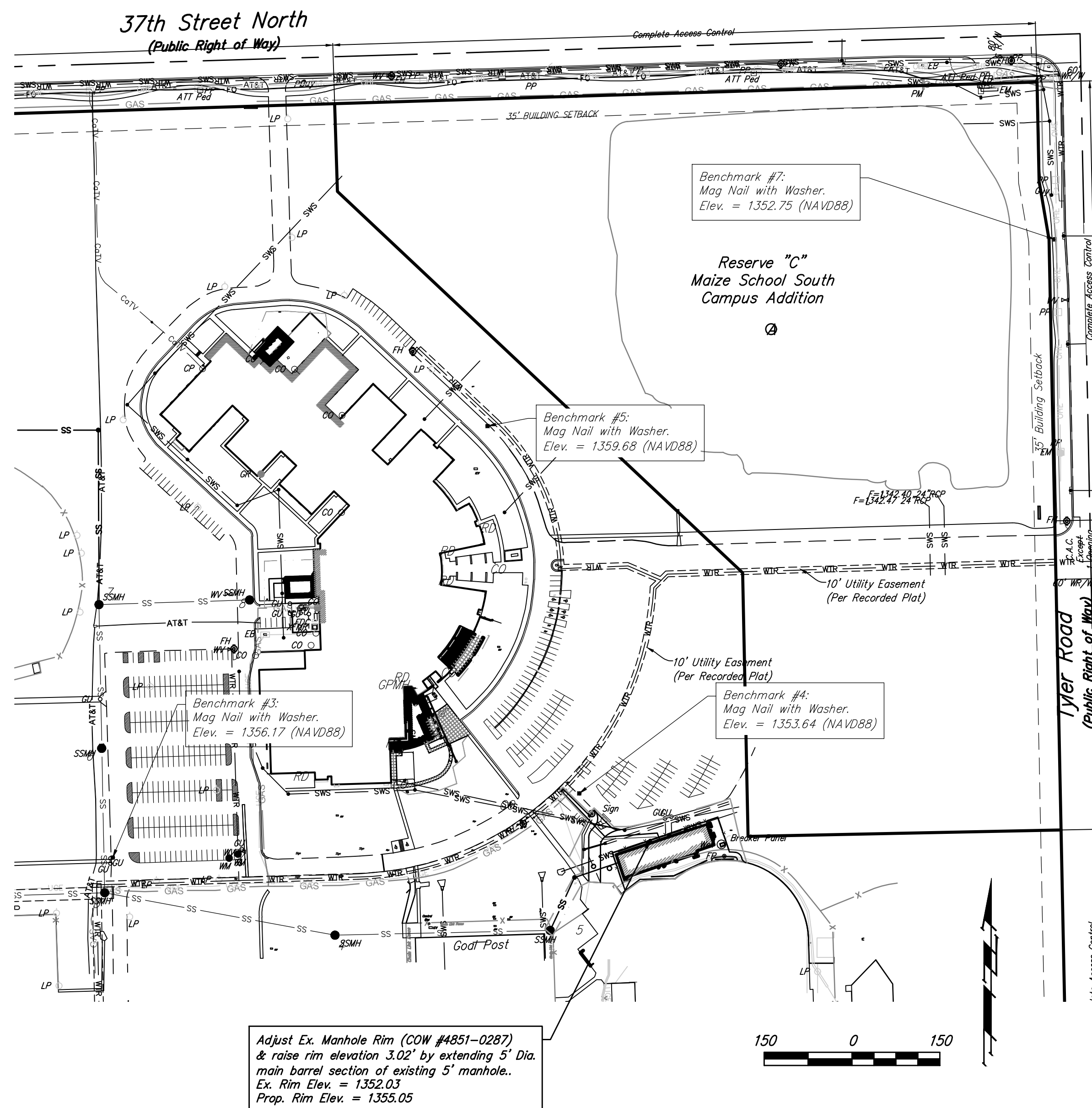
Gary Janzen, P.E. City Engineer

Project Number

0455 PPD (133119)



Vicinity Map



As Built Plans
Contractor: Mies Construction
Superintendent: Albert Williams
Inspected By: Jeff Goering, Schwab Eaton
PDF By: JG, 09-21-2017

Stormwater Narrative & Certification

Reference Copy from 0414PPD(607861) & SW2016-0044:

These construction plans were prepared in accordance with the current Stormwater Management Regulations as set forth in the City of Wichita's Stormwater Management Ordinance 16.32 and the policies/guidelines presented in the Wichita/Sedgwick County Stormwater Manual.

Campus Area: 8,838,221 sq. ft. (202.90 Acres)
Ex. Campus Impervious Area: 1,729,038 sq. ft. (39.69 Acres)

Water Quality Treatment: will be address with existing Wet Detention area in Reserve C, Maize South Campus Addition and a Wetland Area located in Reserve A of Fox Ridge Plaza Addition. This site will have 3 separate projects disturbing the total area noted. In addition to the Maize ECC Center, a building addition to Maize South High School and a Looker Room addition to the Football Field is planned. The second two projects will not be installing any stormwater improvements requiring a PPD Improvements. The areas noted below are a summary of the 3 projects noted.

Campus Area Improvements	Area Disturbed (ft ²)	Redev. Imperv. (ft ²)	New Imperv.
Maize ECC:	275,600	0	125,134
High School Add.:	22,120	5,900	6,410
Football Field			
Looker Room:	24,140	0	15,467
Total Improvements:	321,860	5,900	147,011.

WQv = 42,994 ft³ (See sheet 4 for details)
Existing WQv capacity in Reserve C Wet Detention Basin (771,000 ft³)

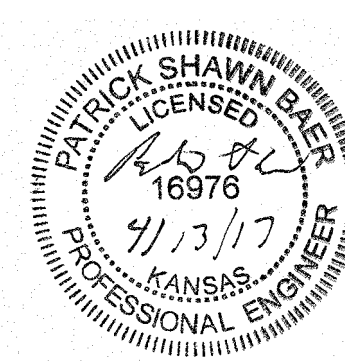
Detention & Downstream Channel Protection: Existing Wet Detention Basins located in Reserve C of Maize South Campus Addition & have been developed to meet detention requirements. Reserve A of Fox Ridge Plaza Add. have been developed to meet detention and downstream channel protection from the anticipated western development of Maize South Campus Addition. See sheet 4 for details.

BMPs used for this development are:
Wet Detention basins.

APPROVED AS NOTED
BY WICHITA PUBLIC WORKS ENGINEERING
AND STORMWATER DIVISION
Engineering *Robert Hill* 4/14/17
Stormwater *Joe Huddle* 4/18/17

NOTE TO CONTRACTORS
Inspection and testing for this project is to be provided by a Licensed Consulting Engineering Firm under contract with the Owner/Developer. Said inspection to be in accordance with the City of Wichita standard construction engineering practices and certified by a Licensed Professional Engineer in the state of Kansas. No work shall be performed by the Contractor without such inspection nor shall any work be commenced without written authorization by City Engineering. All Construction and Materials shall comply with the current City of Wichita Specifications and Standards and Special Provisions (on file and available at Wichita.gov).

An approved copy of these plans signed by City staff are required on-site.



Baughman Company, P.A. 315 Ellis St. Wichita, KS 67211 P 316-262-7271 F 316-262-0149
ENGINEERING | SURVEYING | PLANNING | LANDSCAPE ARCHITECTURE