

GENERAL NOTES:

- The Contractor shall comply with all applicable safety regulations. All construction shall be completed following most recent City of Wichita Standards, Specifications and Special Provisions.
- Contractor will be required to provide notice to utility companies a minimum of twenty-four (24) hours prior to any excavation, as follows:

Kansas One-Call	(316)687-2470
-----------------	---------------

The Contractor must notify the following in case of an emergency:

AT&T	1-800-246-8464
Black Hills Energy	1-800-694-8989
City of Wichita Water	1-316-268-4555
City of Wichita Sewer	1-316-268-4073
City of Wichita Stormwater	1-316-268-4090
City of Wichita Traffic	1-316-268-4034
Cox Communications	1-888-249-3530
Kansas Gas Service	1-888-482-4950
Westar Energy	1-800-544-4857
- Utility service lines, poles, etc. are to be adjusted as necessary by others prior to construction unless the plans specifically call for their adjustment by the Contractor or unless the plans specifically identify a utility to be adjusted by its owner during construction. Existing utilities and their locations, as shown on the plans, represent the best information obtainable for design. The Contractor will be required to work around existing utilities within the right-of-way which do not conflict with proposed construction.
- Rubble from the removal of miscellaneous structures and excess excavation which is to be wasted shall be disposed of on sites to be provided by the Contractor. These sites shall be approved by the Engineer as to suitability, appearance and site location. Locations, in the opinion of the Engineer, that will leave an unsightly appearance will not be approved. All disposal sites must be approved by the Kansas Department of Health and Environment. Material either stockpiled or disposed of in a flood plain would require a Kansas State Board of Agriculture permit. Any material dumped in water of the United States or wetlands is subject to U.S. Corps of Engineers permitting regulations. Any material buried or stockpiled beyond approved construction limits would require additional archeological investigations unless buried in a previously approved borrow location.
- Trees and shrubs in public right-of-way which are in direct conflict with proposed new construction shall be removed by the Contractor with the Engineer's approval. Trees and shrubs which are not in direct conflict with proposed new construction shall be saved and protected from damage.
- The Contractor shall give all property owners and/or tenants of developed property abutting the construction of this project a minimum of ten (10) days notice prior to start of construction.
- The Contractor shall be responsible for preserving property irons. The Contractor will be required to re-establish any property irons which are damaged or destroyed by his construction operations. Such irons shall be re-established by a licensed land surveyor in accordance with state laws.
- The Water Distribution Division shall field located water valves one time during construction when requested by the Contractor. It shall be the Contractor's responsibility to preserve such field locations during the construction process. Water valves, valve boxes or fire hydrants damaged during construction shall be repaired by Contractor at his own expense. Valve boxes and water meters within the project limits shall be adjusted to match field grades.
- The Contractor shall notify the consultant engineer and Tom Mason at 316-268-4574 with the City of Wichita with the anticipated construction start date and notify them of project completion. Staking and inspection for this project will be the responsibility of the Contractor.
- If traffic will be impacted by construction, a traffic control plan must be submitted and approved by the City Traffic Engineer, Brian Coon at traffic@wichita.gov before construction can begin. The Contractor shall be responsible for all traffic control measures to facilitate construction. All construction zone markings and signage shall conform to the latest version of the Manual on Uniform Traffic Control Devices (MUTCD) as published by the US Dept. of Transportation, Federal Highway Administration. All costs associated with construction markings and signage shall be the Contractor's responsibility.
- All elevations shown are NAVD 88.
- All areas disturbed during construction that will not be under proposed pavement shall be restored to match existing conditions.
- All stubs and plugged pipes shall be located with green plastic tape in the same manner as risers.

- Connecting to Existing Manholes:
Prior to laying sewer lines using existing stubs in existing manholes, the Contractor shall expose and verify the elevation, grade and alignment of existing stubs and notify the Engineer of any deviation from the plans. Where connection to an existing manhole that does not have an existing stub or the stub is unusable due to elevation grade or alignment, the Contractor shall bore cut into existing manhole wall to make connection using approved water stop gasket, and reshape the existing manhole invert to provide smooth flow. The cost to connecting to existing manholes is incidental to the project.
- Contractor shall limit the extent of trench open overnight and weekends to less than 50 feet.
- Contractor shall provide positive drainage away from all manhole covers.
- The Contractor shall prevent any construction debris from entering the existing sanitary sewer during construction.
- The Contractor shall be responsible for maintaining continuous flow of sewage through construction. Contractors proposed method for maintaining sewage flow shall be submitted and approved by the Sewer Maintenance Division (316-268-4073) prior to starting and by-passing of sewage flows.
- Any over excavation from manhole and pipe removal shall be backfilled with AB-3 compacted to 90-95% ASTM D698.
- City Maintenance of sanitary sewer mains ends at last structure within the easement or right-of-way.
- Any sidewalk, drive approach, curb, or street pavement removed to construct project must have a pavement cut permit and be replaced by the City contractor. Permits can be obtained by calling 316-268-4501 or 316-268-4480.

SANITARY SEWER to serve Lots 1&2, Block 1, The Executive at White Tail 2nd Addition CITY OF WICHITA, KANSAS Gary Janzen, P.E., City Engineer 2223 PPS (607861)



LOCATION MAP
(For Visual Use Only)

Index of Sheets:

- | | |
|---------|--|
| 1.0 | Cover Sheet |
| 2.0 | Plan and Profile Sheet |
| 3.0 | Precast Manhole Detail |
| 4.0-4.4 | Erosion Control BMP Details
(attached or available on City's website) |
| 5.0 | Plat |

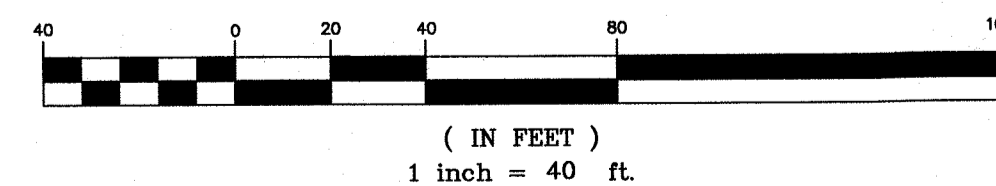
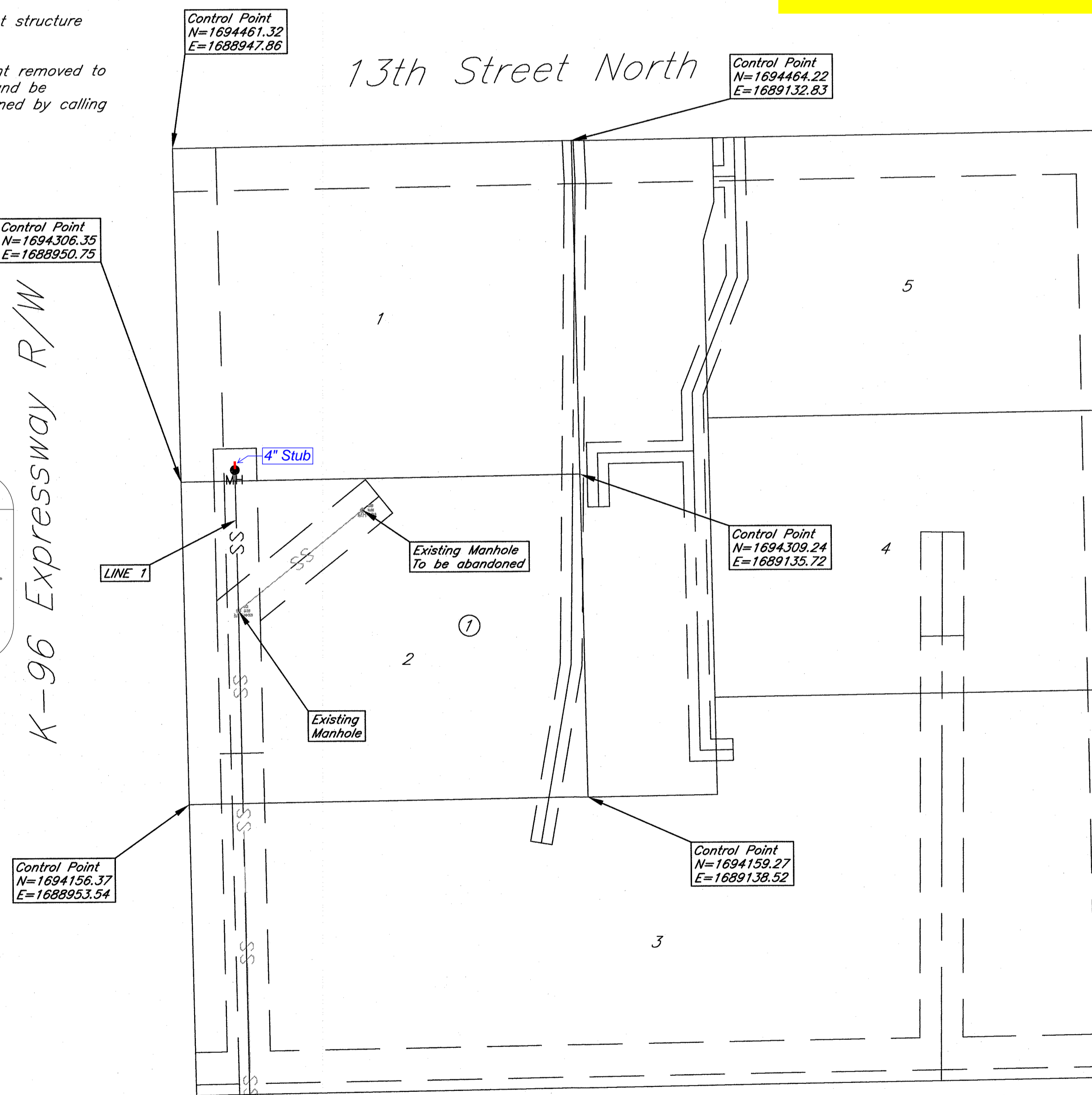
Benchmarks:

Chisled square the North end of the median island on the south side of 13th St. and Whitetail. 639' West and 52' South of the Northeast corner of the NE 1/4, Sec. 15, T27S, R2E.
Elev. = 1353.32 NAVD88

13th St. & K-96 Highway, COW Benchmark, Northwest corner of bridge on concrete sidewalk.
Elev. = 1392.17 NAVD88

T. Mason - City of Wichita, Inspector
Release Date: 10/11/2017
Stub
: 10/12/2017 apr

AS BUILTS	
Contractor: Wilks Underground	Project Inspector: Matt Perez
 117 E. Lewis, Wichita, KS 67202 (316)264-0242	
7/5/2016	



DATE: 05.09.2016
THIS SHEET HAS BEEN SIGNED, SEALED AND DATED ELECTRONICALLY

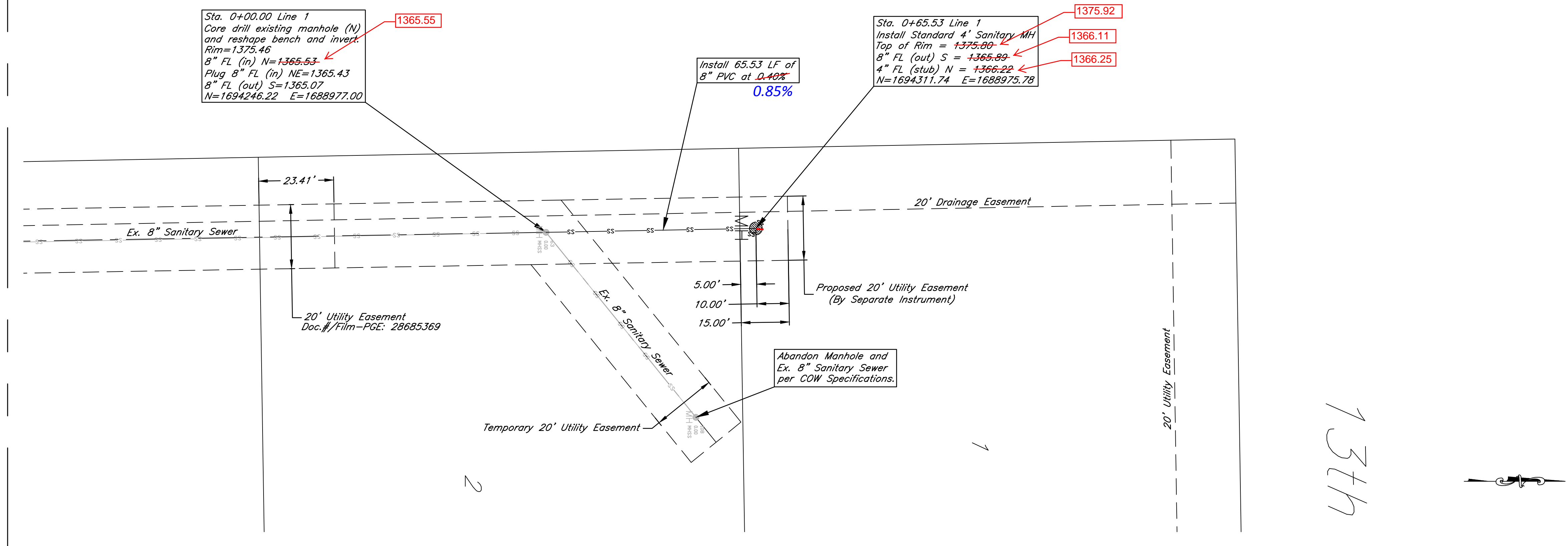
APPROVED AS NOTED BY WICHITA PUBLIC WORKS ENGINEERING DIVISION
Engineering: *[Signature]* 5/11/16
Utilities: *[Signature]* 5-12-16

NOTE TO CONTRACTORS
Installation, inspection and testing for this project is to be provided by a Licensed Consulting Engineering Firm under contract with the Owner/Developer. Said inspection to be in accordance with the City of Wichita standard construction engineering practices and certified by a Licensed Professional Engineer in the state of Kansas. No work shall be performed by the Contractor without such inspection nor shall any work be commenced without written authorization by the City Engineering. All Construction and Materials shall comply with the current City of Wichita Specifications and Standards and Special Provisions. (on file and available at Wichita.gov).
An approved copy of these plans signed by City staff are required on-site.

KEMILLER
ENGINEERING PA
117 E. Lewis, Wichita, KS 67202 (316)264-0242

January 2015

K-96 Expressway R/W



Sta. 0+00.00 Line 1
 Core drill existing manhole (N) and reshape bench and invert.
 Rim = 1375.46
 8" FL (in) N = 1365.53
 Plug 8" FL (in) NE = 1365.43
 8" FL (out) S = 1365.07
 N = 1694246.22 E = 1688977.00

Sta. 0+65.53 Line 1
 Install Standard 4' Sanitary MH
 Top of Rim = 1375.80
 8" FL (out) S = 1365.89
 4" FL (stub) N = 1366.22
 N = 1694311.74 E = 1688975.78

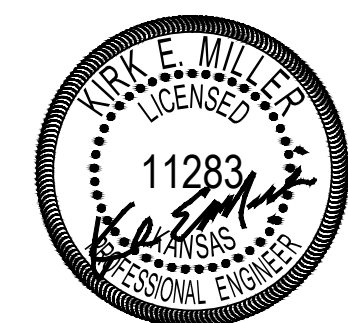
Install 65.53 LF of 8" PVC at 0.40%
 0.85%

AS BUILTS

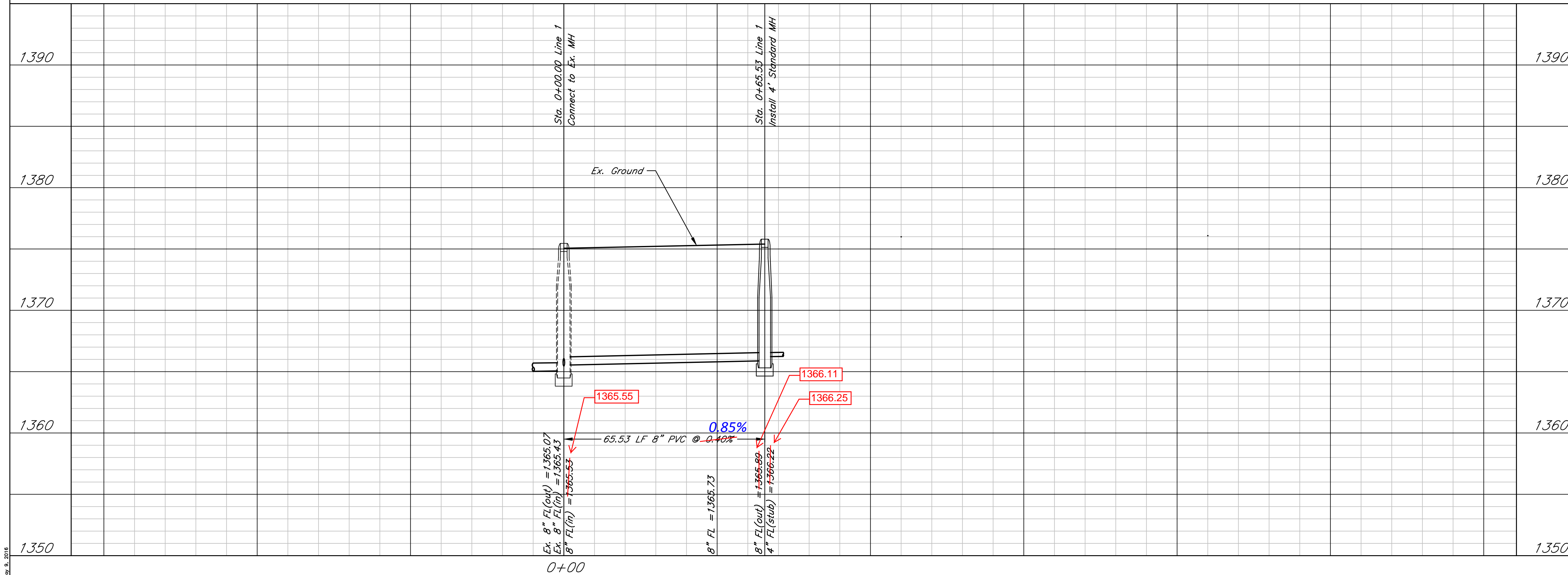
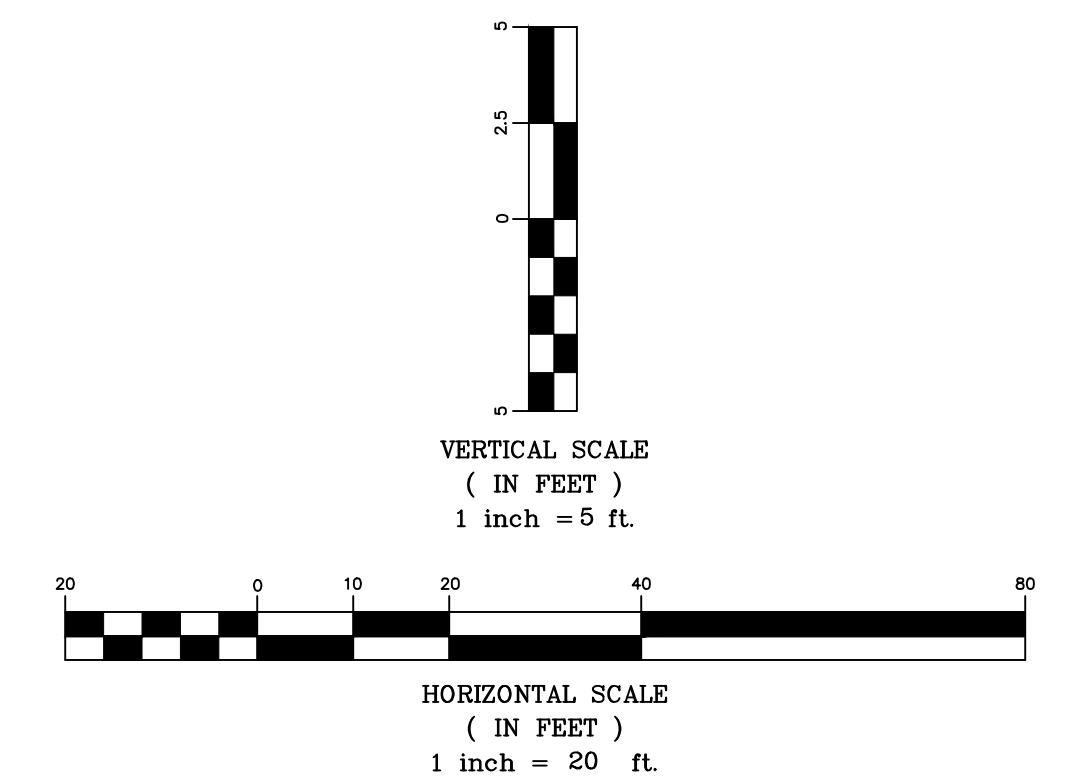
Contractor: Wilks Underground
 Project Inspector: Matt Perez

7/5/2016

KEMILLER ENGINEERING PA
 117 E. Lewis, Wichita, KS 67202 (316)264-0242



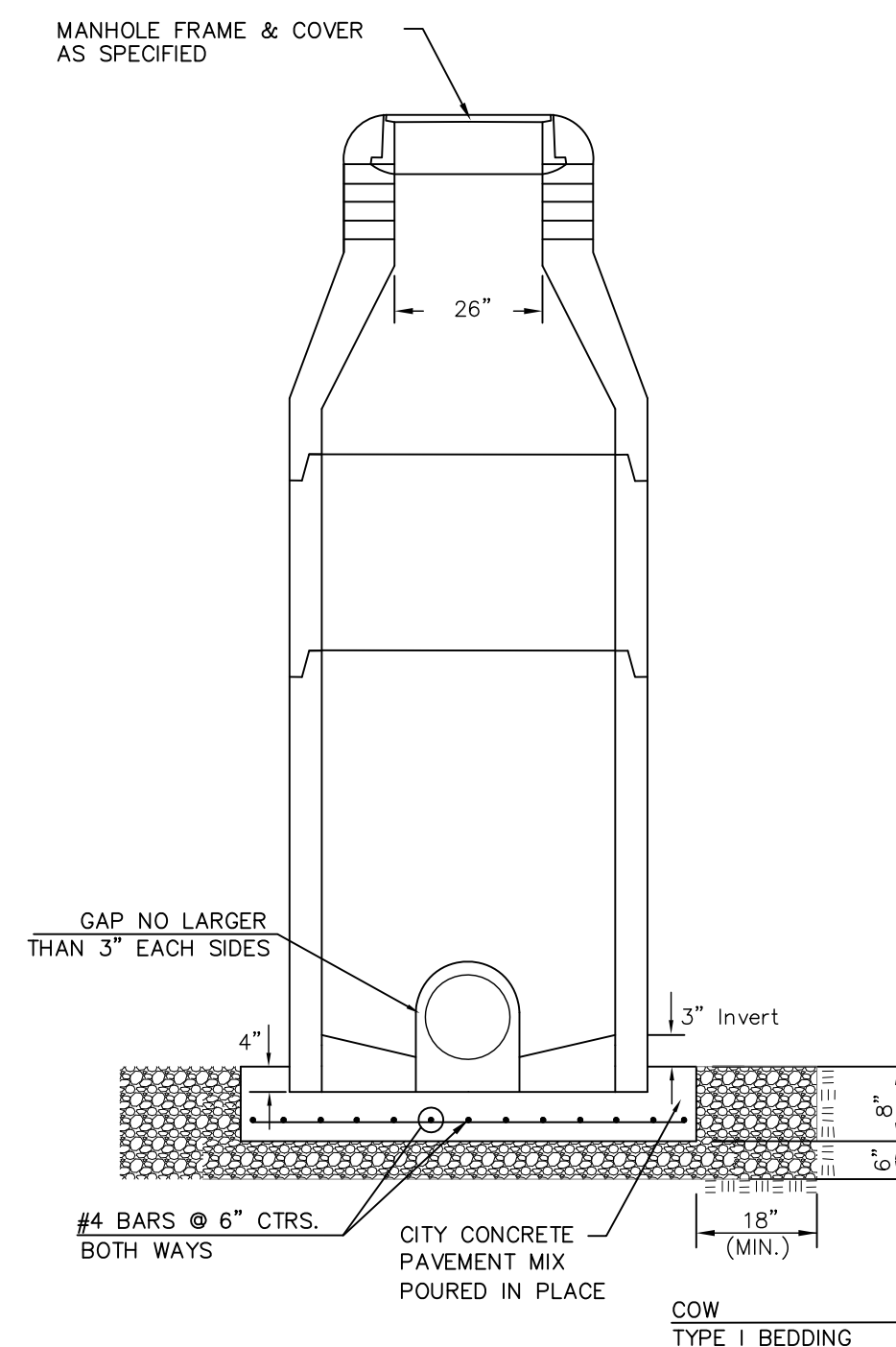
DATE: 05.09.2016
 THIS SHEET HAS BEEN SIGNED, SEALED AND DATED ELECTRONICALLY.



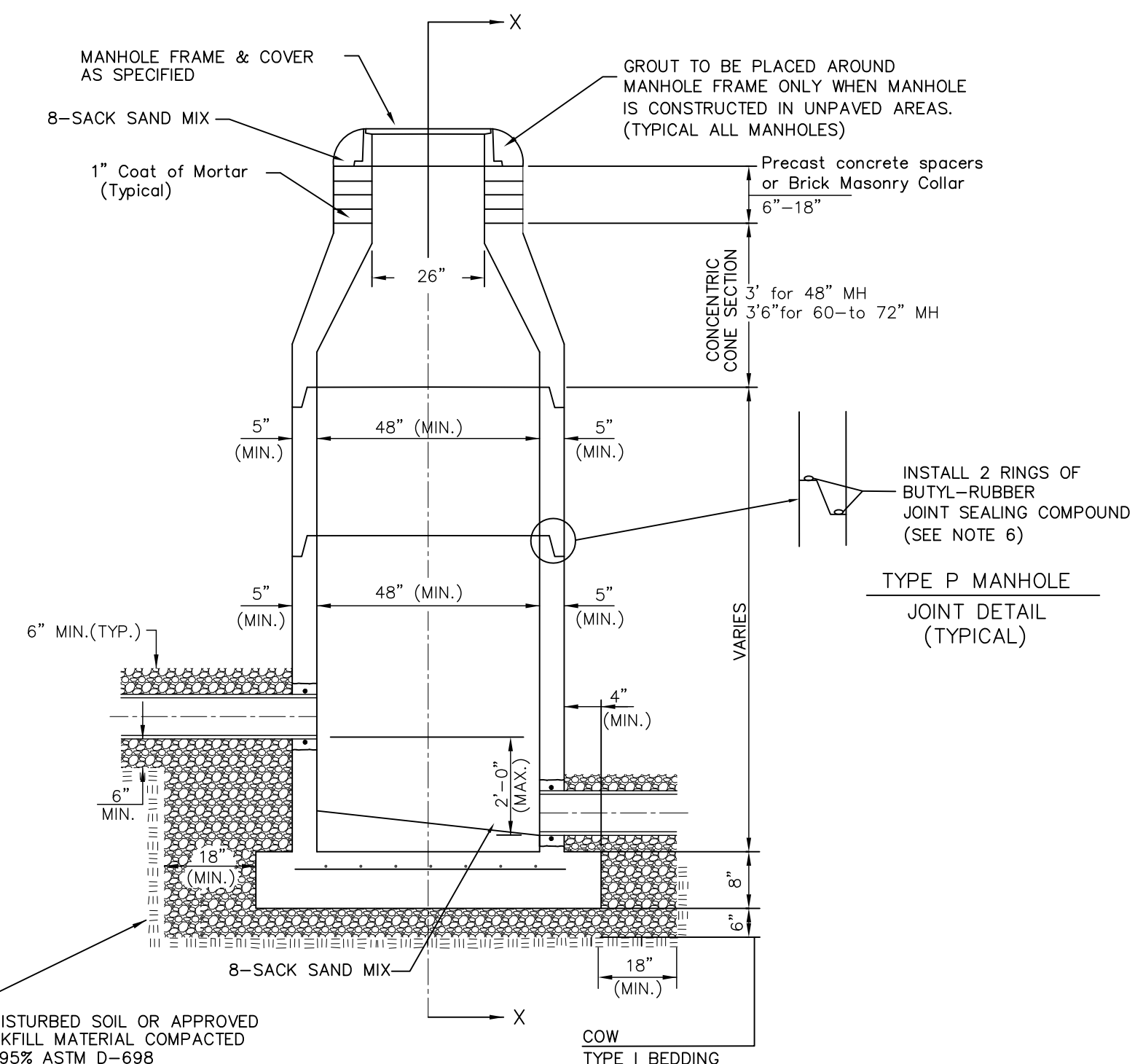
13th Street North & K-96 Plan and Profile Wichita, Kansas

KEMILLER ENGINEERING PA
 117 E. Lewis, Wichita, KS 67202 (316)264-0242

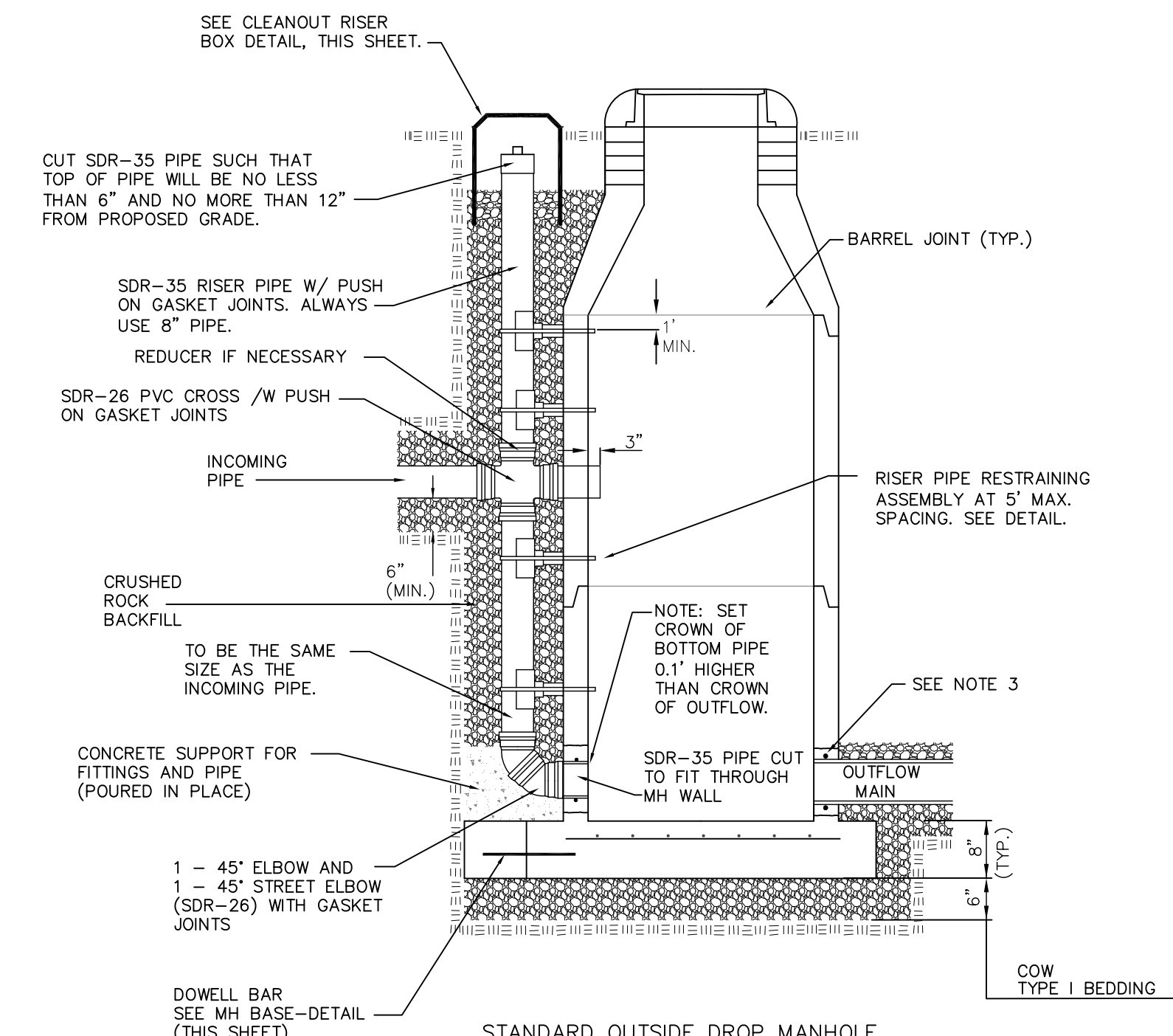
PROJECT NUMBER 2223 PPS (607861)		SHEET 2.0
KEM NO. 14196	FILE	DATE 12/2014
DESIGN KM	DRAWN MP	REVISED



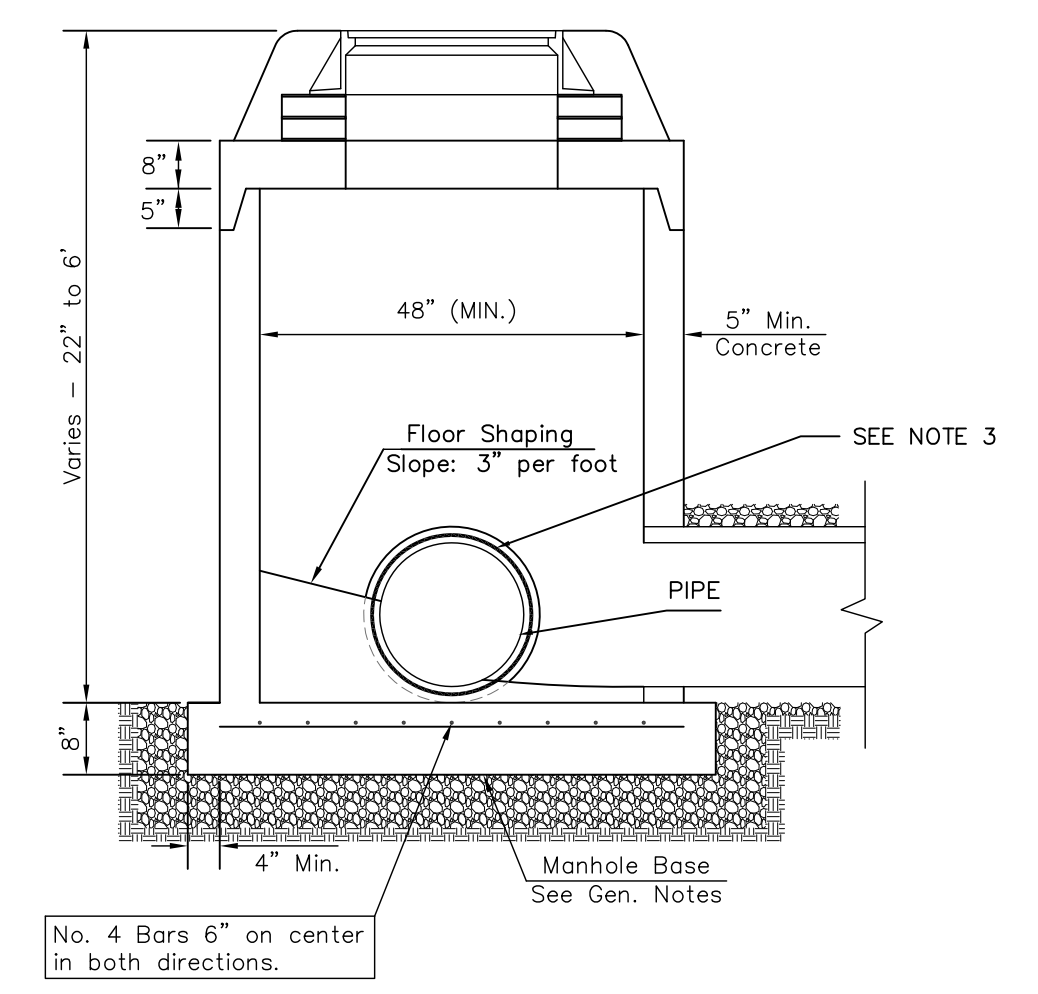
DOG HOUSE MANHOLE
(OVER EXISTING PIPE)
Not to Scale



STANDARD MANHOLE
Not to Scale



STANDARD OUTSIDE DROP MANHOLE
Not to Scale

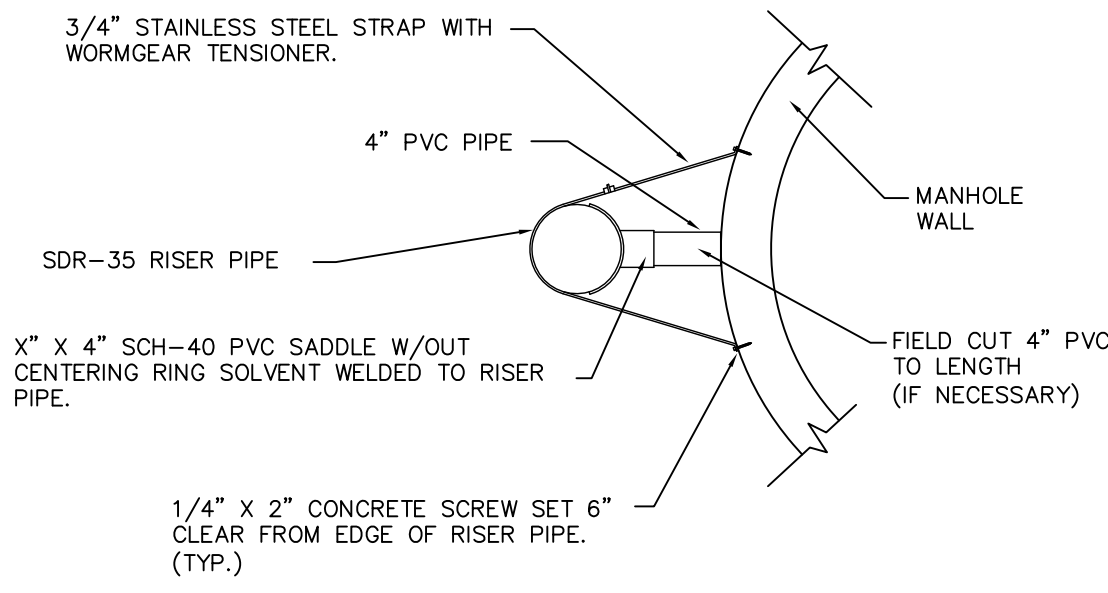


SHALLOW MANHOLE
Not to Scale

= COW TYPE I BEDDING
 = UNDISTURBED SOIL

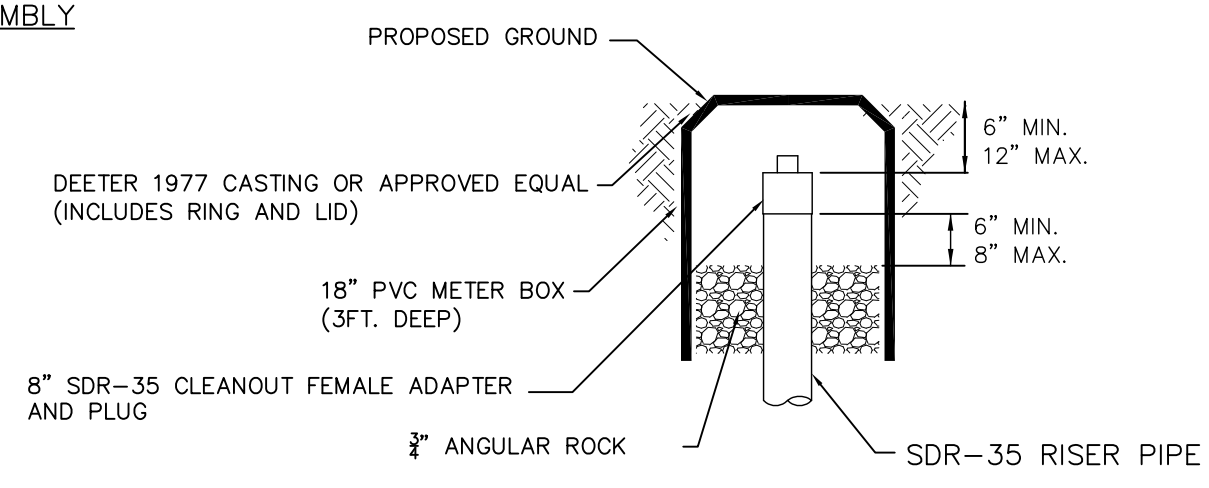
PRECAST MANHOLE GENERAL NOTES

- ALL PRECAST CONCRETE MANHOLE SECTIONS SHALL CONFORM TO THE LATEST REVISIONS OF A.S.T.M. C478 AS MODIFIED BY THE SPECIFICATIONS.
- NON-SHRINK GROUT SHALL BE NON-METALLIC TYPE.
- APPROVED FLEXIBLE WATERSTOP SHALL BE INSTALLED TO JOIN THE SEWER PIPE TO THE MANHOLE WALL. THE SEWER PIPE SHALL BE SUPPORTED WITH CRUSHED ROCK A MINIMUM OF 3 FEET FROM THE MANHOLE WALL AND TO THE FIRST JOINT FOR V.C.P. SUCH THAT THE JOINT REMAINS FLEXIBLE.
- ALL INSIDE SURFACES OF THE CONCRETE MANHOLE WHICH WOULD BE EXPOSED TO SEWER GAS SHALL BE COATED PER SECTION 804.4 OF STANDARD SPECIFICATIONS.
- EXTERIOR MANHOLE WALLS SHALL BE COATED PER SECTION 804.4 OF STANDARD SPECIFICATIONS.
- JOINT SEALING COMPOUND SHALL BE PER 804.4 OF STANDARD SPECIFICATIONS.
- ALL MANHOLE SECTION JOINTS THAT WILL BE IN GROUNDWATER OR GREATER THAN 12' DEEP SHALL BE WRAPPED WITH AN EXTERNAL JOINT SEAL PER SECTION 804.4 OF STANDARD SPECIFICATIONS, AS INDICATED BY THE PLANS.
- PRECAST MANHOLES SHALL BE SET AT LEAST 4 INCHES INTO THE MANHOLE BASE FOR DOG HOUSE MANHOLES.
- TOP OF MANHOLE FLOOR SLAB SHALL BE AT LEAST 3 INCHES BELOW THE FLOW LINE OF THE OUTLET PIPE TO INSURE SUFFICIENT MINIMUM THICKNESS OF SHAPED INVERT.
- LIFTING HOLES SHALL BE FILLED WITH NON-SHRINK GROUT AND THE INTERIOR SURFACE COATED AS SPECIFIED.
- MORTAR USED IN MASONRY CONSTRUCTION SHALL CONTAIN 8 SACKS OF CEMENT PER CUBIC YARD. CONCRETE USED IN MANHOLE BASES SHALL CONFORM TO THE REQUIREMENTS OF CONCRETE FOR CONCRETE PAVEMENT CONSTRUCTION AS SPECIFIED IN THE CITY STANDARD PAVING SPECIFICATIONS USING CITY CONCRETE PAVEMENT MIX WITHOUT AIR ENTRAINING ADMIXTURE. MORTAR SHALL BE PLACED AROUND THE MANHOLE RING AS SHOWN ON THE DRAWINGS WHEN MANHOLES ARE CONSTRUCTED IN UNPAVED AREAS. COMPLETED MANHOLE SHALL BE WITHOUT LEAKS AND WATER TIGHT.
- REINFORCING STEEL SHALL BE INSTALLED IN THE MANHOLE BASES AND SHALL CONSIST OF NO.4 BARS PLACED ON 6" CENTERS IN BOTH DIRECTIONS. THE MANHOLE BASE REINFORCEMENT SHALL BE PLACED AT LEAST 3" ABOVE THE BOTTOM OF THE MANHOLE BASE. ALL COSTS FOR FURNISHING AND INSTALLING REINFORCING STEEL SHALL BE INCLUDED IN THE UNIT PRICE BID FOR THE MANHOLE.
- WALL THICKNESS SHALL BE 1" GREATER THAN MANHOLE DIAMETER IN FEET.
- OPENINGS SHALL BE CORE DRILLED INTO THE MANHOLE WALL WHEN OUTSIDE DROPS ARE CONSTRUCTED ON EXISTING MANHOLES. SUCH OPENINGS DRILLED INTO EXISTING MANHOLES SHALL BE AS SMALL AS PRACTICAL TO FACILITATE INSTALLING AND GROUTING THE NEW PIPE IN PLACE. WATERSTOP GASKETS SHALL BE USED WITH P.V.C. PIPE. THE NEW PIPE SHALL BE GROUTED INTO THE OPENING USING AN APPROVED NONSHRINK GROUT FOR THE FULL MANHOLE WALL THICKNESS. THE EXTERIOR OF THE COMPLETED CONNECTION SHALL BE SEALED WITH AN APPROVED BITUMINOUS COATING SUCH THAT THE CONNECTION WILL BE WATER TIGHT. FLOOR OF MANHOLE SHALL BE MODIFIED TO FORM NEW FLOW CHANNEL FOR THE NEW CONNECTION AS INDICATED BY THE DRAWING. THIS WORK, INCLUDING MODIFICATION OF MANHOLE FLOOR, SHALL BE PAID FOR AT THE UNIT PRICE BID FOR OUTSIDE DROP STACK CONSTRUCTED ON EXISTING MANHOLE.
- THE FLOORS OF ALL MANHOLES SHALL BE SHAPED WITH FLOW CHANNELS SUCH THAT THE MANHOLES WILL BE SELF CLEANING AND FREE OF AREAS WHERE SOLIDS COULD BE DEPOSITED AS SEWAGE FLOWS THROUGH THE MANHOLE FROM ALL INLET PIPES TO THE OUTLET PIPE. FLOW CHANNELS SHALL BE FORMED TO MATCH THE BOTTOM HALVES OF THE INFLOWING PIPES AND THE OUTFLOWING PIPE AS SHOWN BY THE DRAWINGS. MANHOLE FLOORS SHALL HAVE SLOPES OF 3 INCHES PER FOOT IN THE AREAS OUTSIDE OF THE FLOW CHANNELS SLOPED TOWARD THE FLOW CHANNELS. PIPES LAID THROUGH MANHOLES SHALL HAVE THE TOP HALF REMOVED TO NEAT LINES FOR THE FULL INSIDE DIAMETER OF THE MANHOLE. MANHOLE FLOORS SHALL THEN BE SHAPED AROUND THE BOTTOM HALF OF THE PIPE WHICH FORMS THE FLOW CHANNEL.
- MANHOLE COVER CASTINGS AND MANHOLE FRAME CASTINGS SHALL CONFORM TO THE REQUIREMENTS AS INDICATED IN THE STANDARD SPECIFICATIONS AND AS SHOWN IN THE STANDARD DETAIL DRAWING.
- THE VERTICAL DROP IN STANDARD MANHOLES SHALL NOT EXCEED 2' REGARDLESS OF PIPE SIZE. THE CROWNS OF INFLOWING PIPES SHALL NEVER BE SET LOWER THAN THE CROWN OF THE OUTFLOWING PIPE.
- STANDARD MANHOLES SHALL BE BID AS STANDARD MANHOLES FOR THE TYPE AND DIAMETER INDICATED. OUTSIDE DROP MANHOLES SHALL BE BID AS STANDARD OUTSIDE DROP MANHOLES FOR THE TYPE AND DIAMETER INDICATED. ALL MANHOLE DIAMETERS WILL BE 4" UNLESS INDICATED OTHERWISE.
- PRECAST CONCRETE SPACERS OR BRICK MASONRY COLLAR SHALL BE INSTALLED BETWEEN THE CAST IRON FRAME AND THE CONCENTRIC CONE. THE COLLAR WILL HAVE 8" WALLS AND A VERTICAL HEIGHT OF 6" MINIMUM AND 18" MAXIMUM. A 1" COAT OF MORTAR WILL BE PLASTERED ON THE OUTSIDE OF THE COLLAR. THE USE OF PRE-CAST CONCRETE SPACERS FOR MANHOLE TOP ADJUSTMENT IS ALSO ALLOWED.
- THE FULL DIAMETER OF THE MANHOLE SHALL EXTEND THE ENTIRE DEPTH OF THE MANHOLE TO THE CONE SECTION. NO REDUCTION IN MANHOLE DIAMETER WILL BE ALLOWED.
- REFER TO PLANS FOR SIZE OF OUTSIDE DROP RISER, SADDLES AND CROSS.

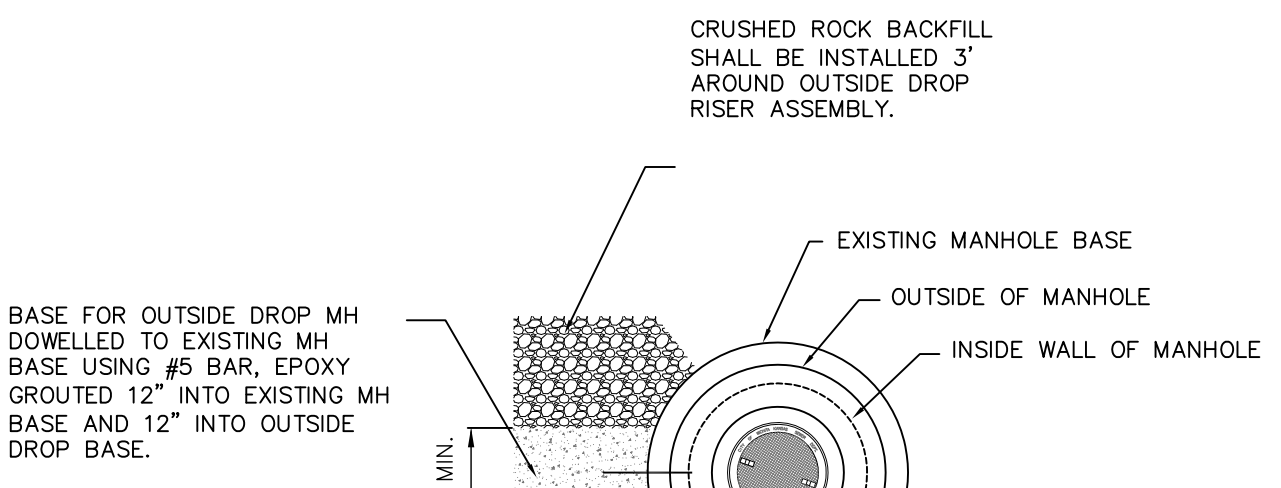


RISIER PIPE RESTRAINING ASSEMBLY
Not to Scale

SANITARY SEWER MANHOLE DIAMETERS		
DIAMETER	DEPTH	PIPE SIZE
4'	0'-15'	8"-18"
5'	>15'-30'	21"-30"
6'	>30'	36"-60"



CLEANOUT RISIER BOX DETAIL
Not to Scale



MH BASE DETAIL
Not to Scale



REVISED JANUARY 2015

**PRECAST
SANITARY SEWER
MANHOLE**

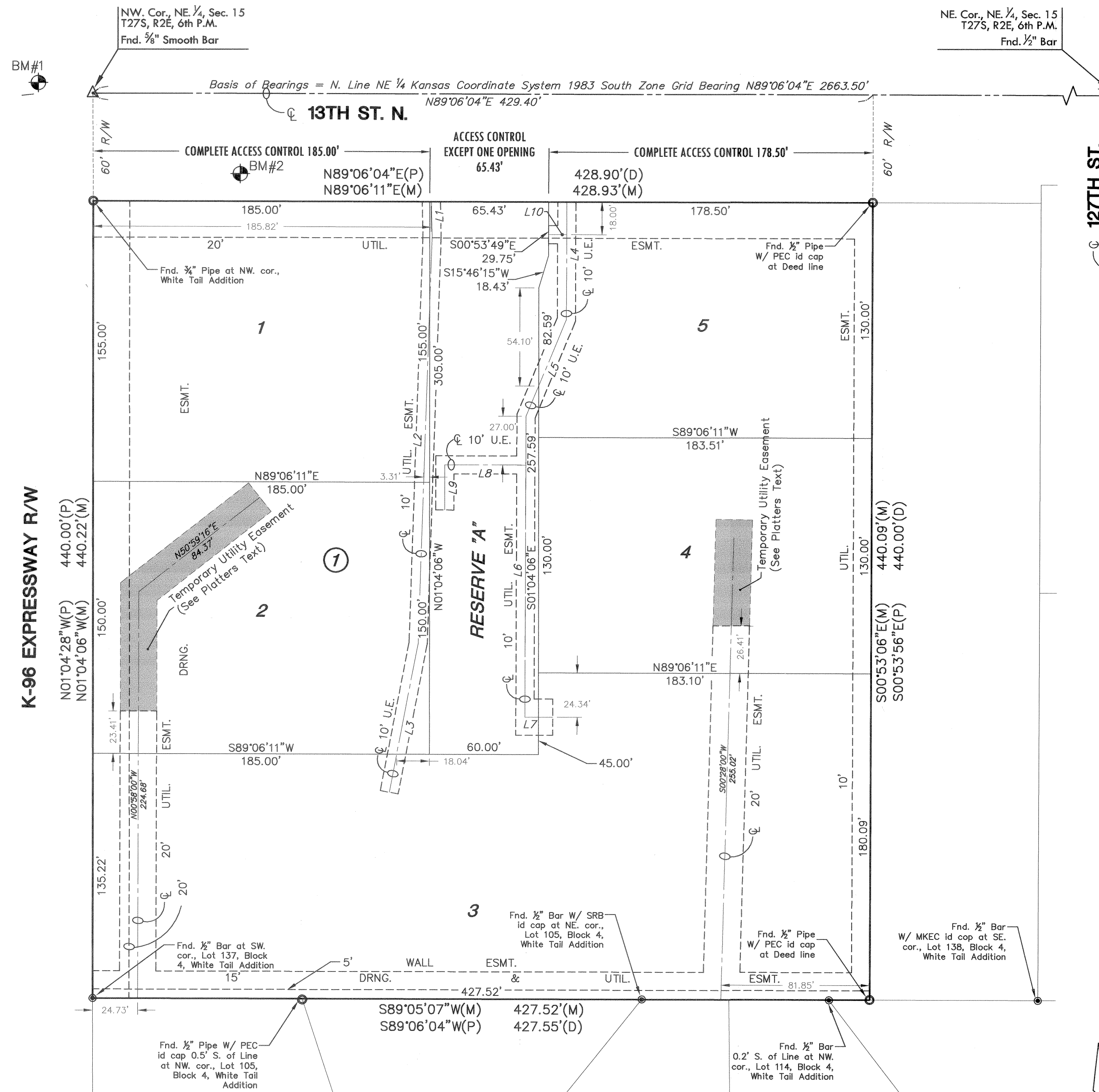
CITY ENGINEER
GARY JANZEN, P.E.

PROJECT NUMBER 2223 PPS	OCA NUMBER 607861	DATE
CITY ENGINEER'S OFFICE CITY HALL - SEVENTH FLOOR 455 NORTH MAIN STREET WICHITA, KANSAS 67202-1620 (316) 268-4501		SHEET 3.0

FINAL PLAT

THE EXECUTIVE AT WHITE TAIL 2ND ADDITION

AN ADDITION TO WICHITA, SEDGWICK COUNTY, KANSAS



LEGEND

- △ = Section Corner Monument Found
- = Found Survey Monument
- ⊕ = 3/4" Rebar w/ MKEC CLS 39 id. cap EXCEPT where annotated
- = Set 3/4" Rebar w/ MKEC CLS 39 id. cap
- (M) = Measured
- (P) = Platted
- (D) = Deed
- = Temporary Easement

BENCH MARKS

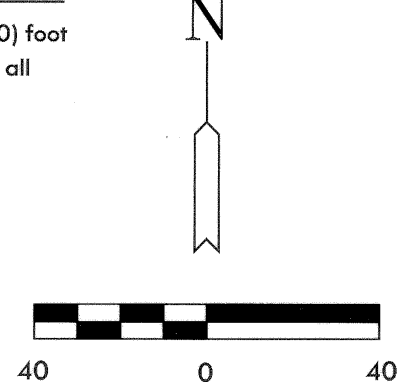
- BM#1 C.O.W. Disc NW. corner of bridge on concrete sidewalk at K-96 & 13th Street
ELEV. = 1391.62 NGVD
204.22 City Datum
- BM#2 R.R. spike in S. face guy pole at lying 82° E. of and 15' N. of the NW. cor., Lot 1, Block 1.
ELEV. = 1376.27 NGVD
188.87 City Datum

EASEMENT LINE TABLE

LINE	LENGTH	BEARING
L1	19.24'	S02°13'27"E
L2	224.51'	S00°50'24"W
L3	83.92'	S09°48'03"W
L4	65.00'	S00°53'49"E
L5	57.63'	S21°36'11"W
L6	166.10'	S00°53'49"E
L7	15.28'	N89°06'11"E
L8	44.57'	S89°06'11"W
L9	25.00'	S00°53'49"E
L10	10.00'	N89°06'11"E

NOTE

There shall be zero (0) foot building setbacks for all interior lot lines.



We, MKEC Engineering Consultants, Inc., a Registered Corporate Land Surveyor in Kansas, do hereby certify that we have been in responsible charge of surveying and platting of "THE EXECUTIVE AT WHITE TAIL 2ND ADDITION" an addition to Wichita, Sedgwick County, Kansas, into Lots, a Block, and a Reserve, the same being accurately set forth in the accompanying plat and described herein:

A Replat of:
All of The Executive at White Tail Addition, an Addition to Wichita, Sedgwick County, Kansas.
All reserves, streets, utility easements, building setbacks, access control, together with, a utility easement recorded on Doc.#/Flm-Pg: 28685369, together with any and all other public dedications within the above described property are hereby vacated and replatted by virtue of K.S.A. 12-512(b).

I hereby certify that the details of this plat are correct to the best of my knowledge and belief this 19th day of October 2005.

Gregory J. Allison, PE, LS #1257
MKEC Engineering Consultants, Inc.
411 North Webb Road
Wichita, Kansas 67206

Know all men by these presents that we the undersigned property owners of the land above set forth in the Registered Land Surveyor's Certificate, have caused the same to be surveyed and platted into Lots, a block, and a Reserve the same to be known as "THE EXECUTIVE AT WHITE TAIL 2ND ADDITION," an addition to Wichita, Sedgwick County, Kansas.

Easements for the construction and maintenance of public utilities and drainage, as indicated on the accompanying plat are hereby granted to the public. There shall be zero (0) foot building setback for all interior lot lines.

All abutters right to access to or from 13th Street North over and across the North line of "THE EXECUTIVE AT WHITE TAIL 2ND ADDITION," are hereby granted to the appropriate governing body, provided one location having full turning movements as indicated herein.

A drainage plan has been developed for this plat and all drainage easements, right-of-way, or reserves shall remain at established grades or as modified with the approval of the applicable City or County Engineer, and unobstructed to allow for the conveyance of storm water.

Reserve "A" is platted for lot access, utilities in designated areas, landscaping, irrigation, open space, parking, drainage, and monuments. The Reserve shall be owned and maintained by the Lot Owner Association.

The 5' Wall Easement along South line of addition, as shown, is hereby platted for the construction and maintenance of a private wall. Utilities may cross the wall easement.

The two temporary 20 foot utility easements shown hereon, located within Lots 2, and 4, Block 1, are presently being utilized by "public utilities" to operate and maintain their facilities. The two aforesaid temporary 20 foot utility easements shall expire upon the cessation of usage and removal of those facilities within the indicated area.

DINNING-BEARD INVESTMENT GROUP, LLC, a Kansas limited liability company

Mona Stein, Vice President, CFO
Mona Stein, Vice President, CFO

STATE OF KANSAS, SEDGWICK COUNTY) ss:
This instrument was acknowledged before me on 19th day of October, 2005, by Mona Stein, Vice President, CFO, Dinning-Beard Investment Group, LLC, a Kansas limited liability company.
IN WITNESS WHEREOF, I have hereunto set my hand and affixed my official seal, the day and year last above written.

Cynthia A. Womack, Notary Public
CYNTHIA A. WOMACK
Notary Public, State of Kansas
My Assn. Expires 2-7-2009

My Term Expires: 2-7-2009

We EMPRISE Bank, holders of a mortgage on the above described property, do hereby consent to the plat of "THE EXECUTIVE AT WHITE TAIL 2ND ADDITION."

EMPRISE BANK
Sam Trummel, Senior Vice President
Sam Trummel, Senior Vice President

This instrument was acknowledged before me on 19th day of October, 2005, by Sam Trummel, Senior Vice President, Emprise Bank.

IN WITNESS WHEREOF, I have hereunto set my hand and affixed my official seal, the day and year last above written.

Michelle L. Holdeman, Notary Public
MICHELLE L. HOLDEMAN
Notary Public, State of Kansas
My Assn. Expires 9-27-08

My Term Expires: 9-27-08

This plat of "THE EXECUTIVE AT WHITE TAIL 2ND ADDITION" has been submitted to and approved by the Wichita-Sedgwick County Metropolitan Area Planning Commission, Wichita, Kansas.

Dated this 19th day of September, 2005
WICHITA-SEDGWICK COUNTY METROPOLITAN AREA PLANNING COMMISSION

John L. Schlegel, Secretary
John L. Schlegel, Secretary



At the direction of the City Council:
Carlos Mayans, Mayor
Carlos Mayans, Mayor
Karen Sublett, City Clerk
Karen Sublett, City Clerk

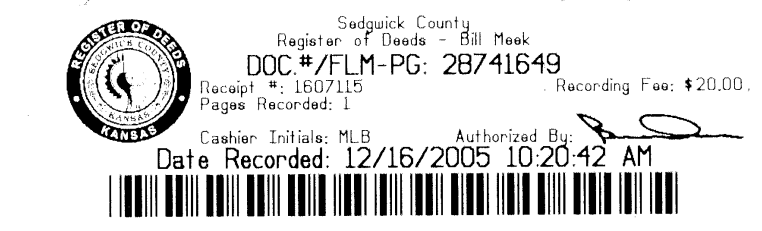
STATE OF KANSAS, SEDGWICK COUNTY) ss:

Entered on transfer record this 9th day of December, 2005

Don Brace, County Clerk
Don Brace, County Clerk



This is to certify that this instrument was filed for record in the Register of Deeds office this 16th day of December, 2005, at 10:20 o'clock AM; and is duly recorded.



Bill Meek, Register of Deeds
Bill Meek, Register of Deeds

Attest:
Tonya E. Buckingham, Deputy
Tonya E. Buckingham, Deputy

Reviewed in accordance with K.S.A. 58-2005 on this 24th day of October, 2005.

Tricia L. Robello, Deputy County Surveyor
TRICIA L. ROBELLO
Deputy County Surveyor
Tricia L. Robello, LS #1246
Deputy County Surveyor
Sedgwick County, Kansas

