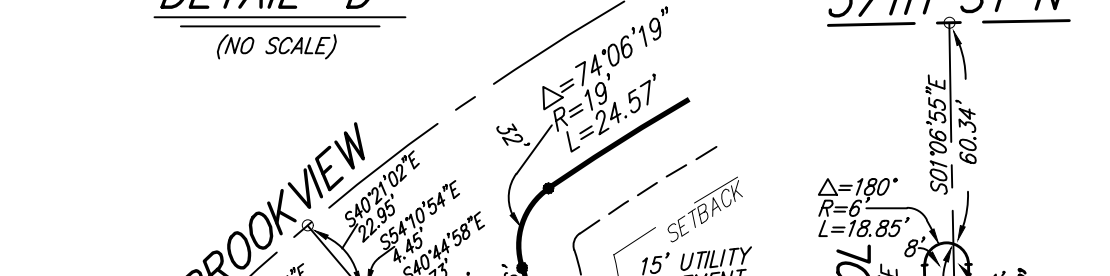
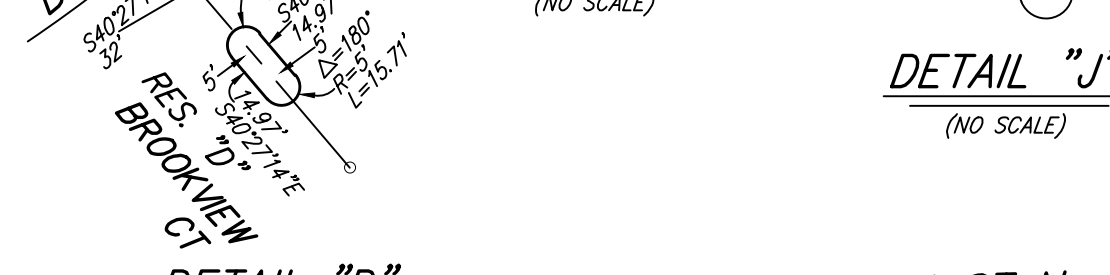
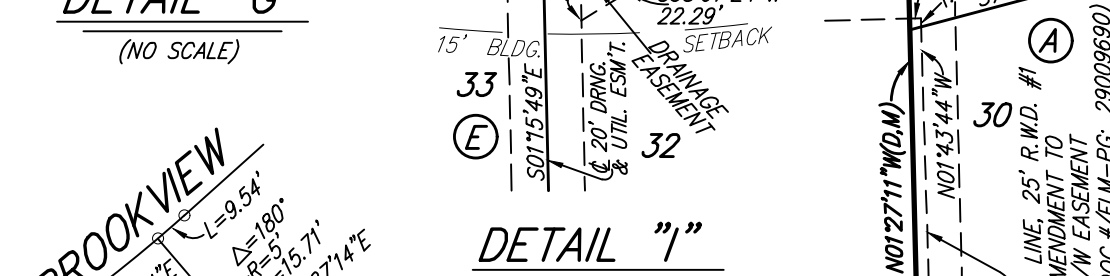
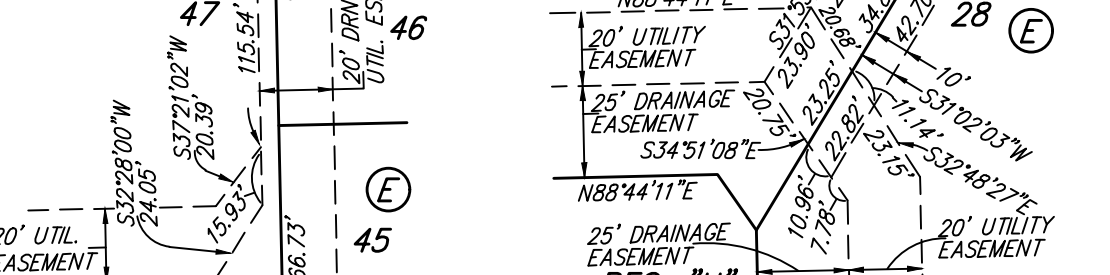
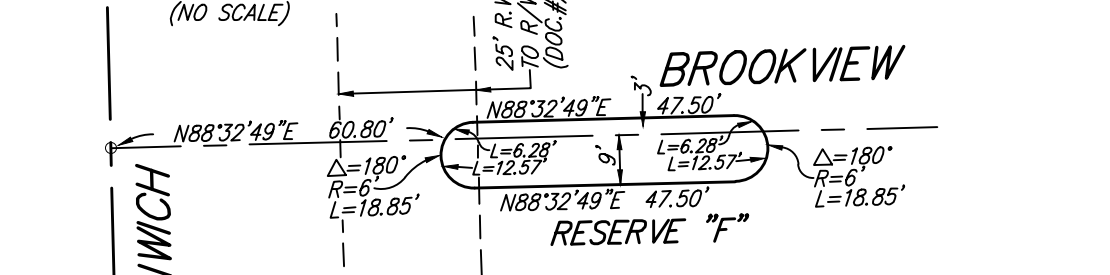
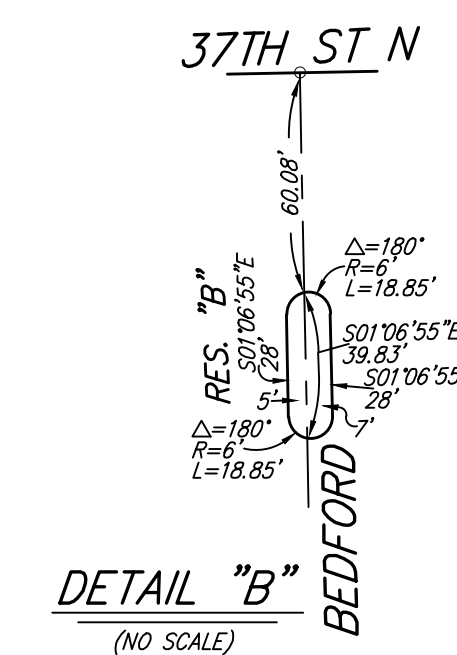
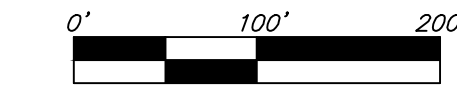
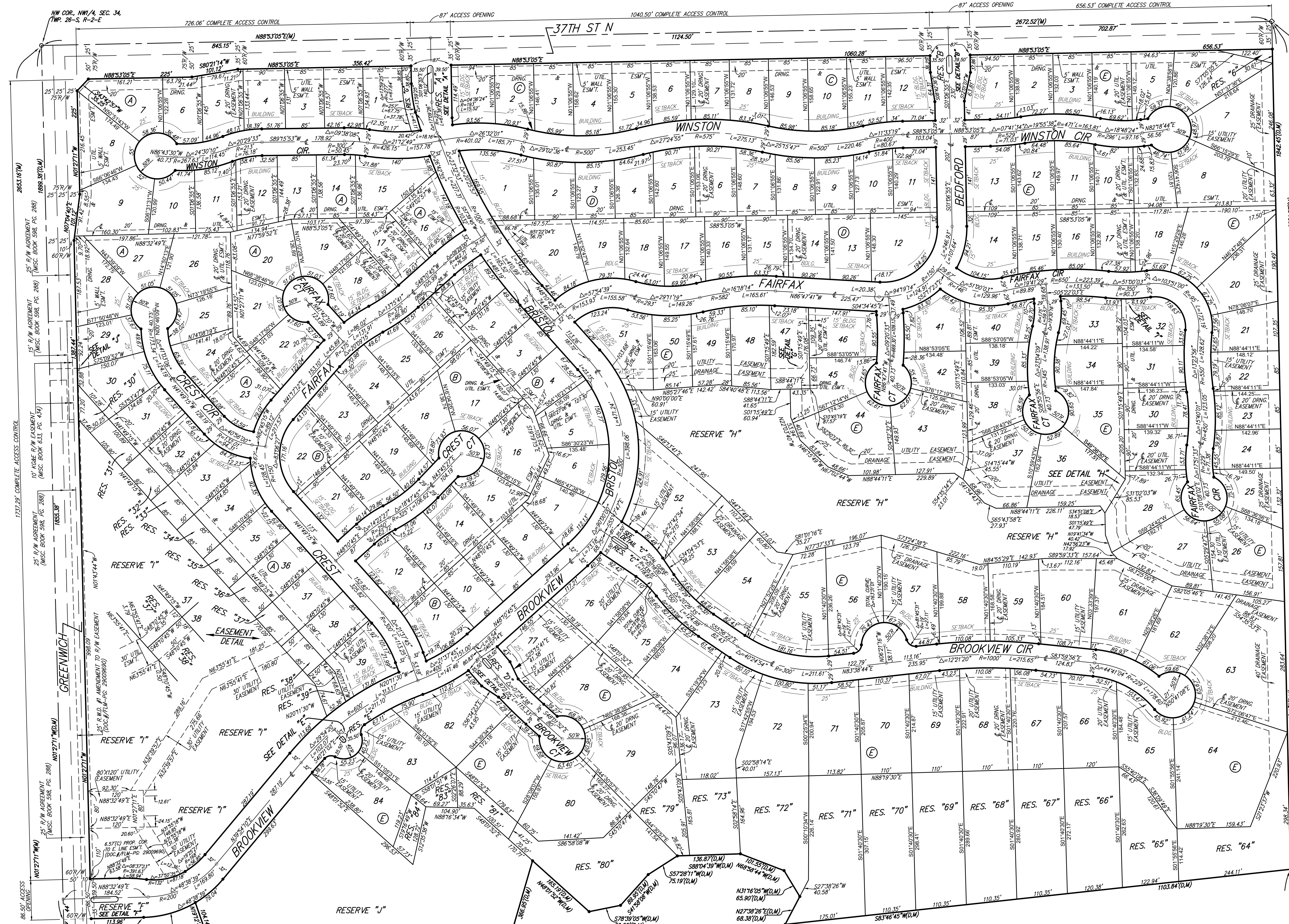


BROOKFIELD ADDITION WICHITA, SEDGWICK COUNTY, KANSAS

- #4 REBAR W/ "BAUGHMAN" CAP (SET)
 - = 1" IRON PIPE (FOUND)
 - ◇ = 2" ALUMINUM "SEDGWICK COUNTY" CAP (FOUND)
 - △ = STONE (FOUND)
 - = #6 REBAR (FOUND)
- (M) = MEASURED
(D) = DESCRIBED
(P) = PLATTED
- BENCHMARK:
CHISELED SQUARE ON E. SIDE OF SCHOOL SIGNAL POLE BASE, W. SIDE OF GREENWICH ROAD, 302' S. & 21.5' W. OF THE SW COR., NW1/4, SEC. 34, TWP. 26-S, R-2-E. ELEV. = 1373.80 NAVD88.
- TOP OF 1" IRON PIPE AT NW COR., NW1/4, SEC. 34, TWP. 26-S, R-2-E. ELEV. = 1380.04 NAVD88.



| LOT | BLOCK | ELEVATION NAVD88 |
|-------|-------|------------------|
| 15-19 | A | 1376.0 |
| 20-22 | A | 1375.5 |
| 23-25 | A | 1375.0 |
| 5-7 | F | 1377.0 |
| 26-28 | F | 1372.8 |
| 30-32 | F | 1372.5 |
| 43-45 | F | 1372.8 |
| 47-51 | F | 1372.7 |
| 52-61 | F | 1373.0 |
| 62 | F | 1372.5 |
| 63-66 | F | 1370.8 |
| 67-71 | F | 1372.0 |
| 72-73 | F | 1372.7 |
| 79-80 | F | 1373.0 |
| 81-84 | F | 1373.5 |

NOTE:
A drainage plan has been developed for the plat and all drainage easements, rights-of-way, or reserves shall remain at established grades or as modified with the approval of the applicable City or County Engineer and unobstructed to allow for the conveyance of stormwater.