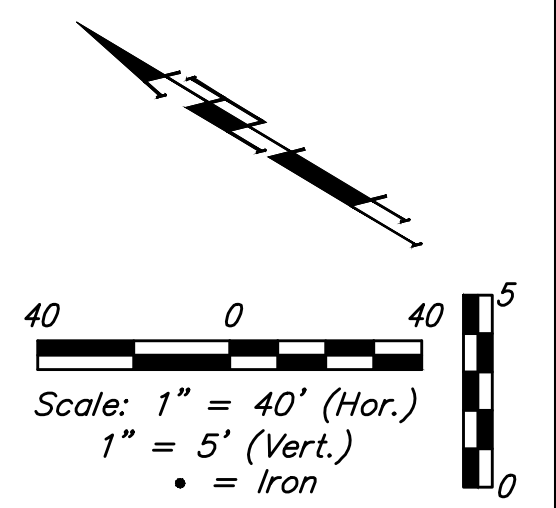
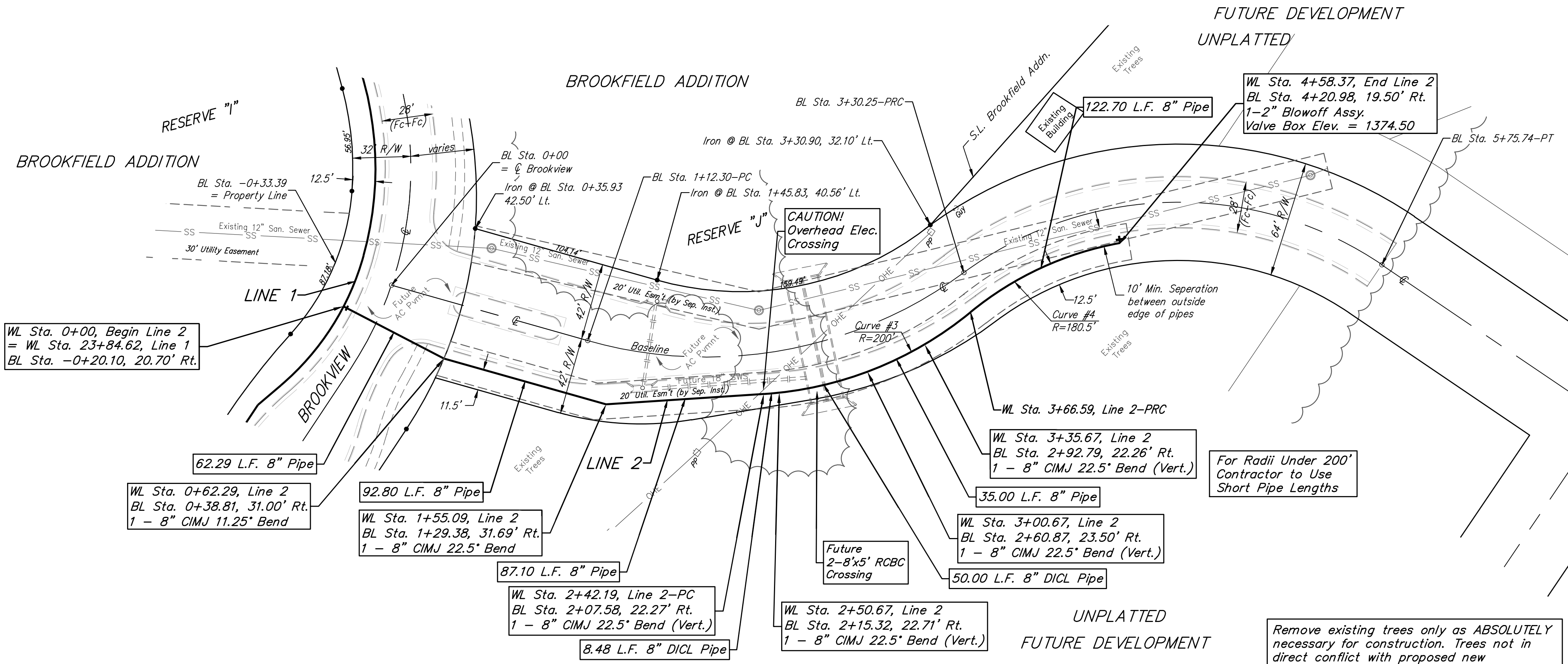


**BENCHMARKS:**  
 RR spike in asphalt, SW COR., N1/2, SW1/4, Sec. 34, TWP. 26-S, R-2-E. Elev. = 1400.59 NAVD88

RR spike in E. face of power pole, 174± N. of S. line, N1/2, SW1/4 & 49± E. of W. line, SW1/4, Sec. 34, TWP. 26-S, R-2-E. Elev. = 1398.64 NAVD88

RR spike in S. face of power pole, 294± S. of N. line, SW1/4, & 48± E. of W. line, SW1/4, Sec. 34, TWP. 26-S, R-2-E. Elev. = 1386.14 NAVD88



WL Sta. 0+00, Begin Line 2  
 = WL Sta. 23+84.62, Line 1  
 BL Sta. -0+20.10, 20.70' Rt.

62.29 L.F. 8" Pipe

WL Sta. 0+62.29, Line 2  
 BL Sta. 0+38.81, 31.00' Rt.  
 1 - 8" CIMJ 11.25' Bend

92.80 L.F. 8" Pipe

WL Sta. 1+55.09, Line 2  
 BL Sta. 1+29.38, 31.69' Rt.  
 1 - 8" CIMJ 22.5' Bend

87.10 L.F. 8" Pipe

WL Sta. 2+42.19, Line 2-PC  
 BL Sta. 2+07.58, 22.27' Rt.  
 1 - 8" CIMJ 22.5' Bend (Vert.)

8.48 L.F. 8" DICL Pipe

WL Sta. 2+50.67, Line 2  
 BL Sta. 2+15.32, 22.71' Rt.  
 1 - 8" CIMJ 22.5' Bend (Vert.)

WL Sta. 3+00.67, Line 2  
 BL Sta. 2+60.87, 23.50' Rt.  
 1 - 8" CIMJ 22.5' Bend (Vert.)

50.00 L.F. 8" DICL Pipe

WL Sta. 3+35.67, Line 2  
 BL Sta. 2+92.79, 22.26' Rt.  
 1 - 8" CIMJ 22.5' Bend (Vert.)

35.00 L.F. 8" Pipe

WL Sta. 3+66.59, Line 2-PRC

For Radii Under 200'  
 Contractor to Use  
 Short Pipe Lengths

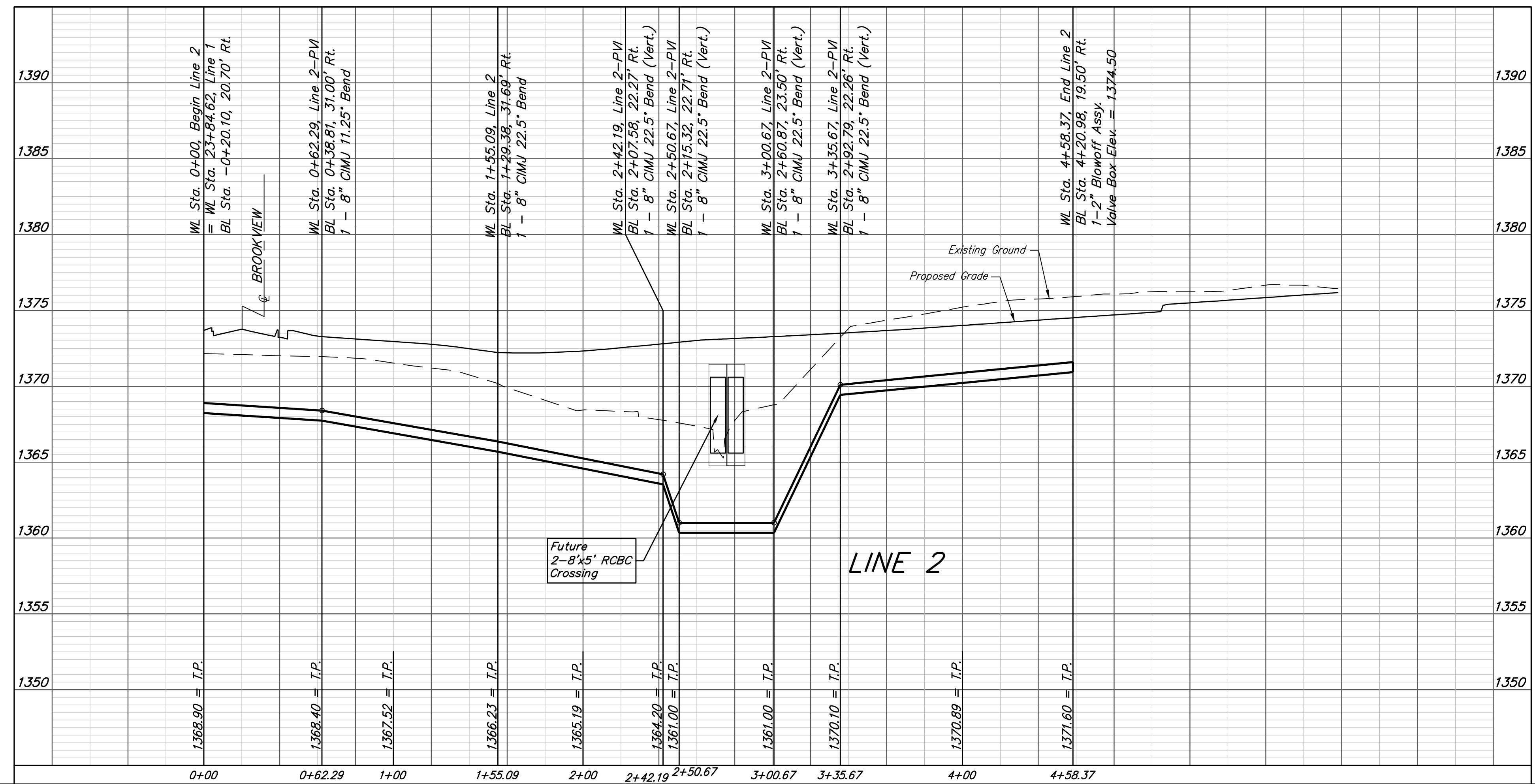
Remove existing trees only as **ABSOLUTELY** necessary for construction. Trees not in direct conflict with proposed new construction shall remain and be protected from damage. Cost to be included in bid item "Site Clearing"

Curve #3  
 Curve Data Based on Centerline of Pipe  
 Rad. = 200' Delta = 35°38'14" Tangent = 64.28'  
 Arc = 124.40' L.C. = 122.40' Def./Ft. = 8.59419 Min.

Station	Arc	Chord 8' Right	Defl.	Total Defl.
2+42.19	-	-	0'00'00"	0'00'00"
2+50.00	7.81'	8.12'	1'07'07"	1'07'07"
2+75.00	25.00'	25.98'	3'34'52"	4'41'59"
3+00.00	25.00'	25.98'	3'34'51"	8'16'50"
3+25.00	25.00'	25.98'	3'34'51"	11'51'41"
3+50.00	25.00'	25.98'	3'34'51"	15'26'32"
3+66.59	16.59'	17.25'	2'22'35"	17'49'07"

Curve #4  
 Curve Data Based on Centerline of Pipe  
 Rad. = 180.5' Delta = 29°08'02" Tangent = 46.91'  
 Arc = 91.78' L.C. = 90.80' Def./Ft. = 9.52295 Min.

Station	Arc	Chord 8' Right	Defl.	Total Defl.
3+66.59	-	-	0'00'00"	0'00'00"
3+75.00	8.41'	8.04'	1'20'05"	1'20'05"
4+00.00	25.00'	23.87'	3'58'05"	5'18'10"
4+25.00	25.00'	23.87'	3'58'04"	9'16'14"
4+50.00	25.00'	23.87'	3'58'05"	13'14'19"
4+58.37	8.37'	8.00'	1'19'42"	14'34'01"



**Baughman** Brookfield Addition  
**LINE 2**  
 Water Distribution System

Baughman Company, P.A. 315 Ellis St. Wichita, KS 67211 P 316-262-7271 F 316-262-0149  
 ENGINEERING | SURVEYING | PLANNING | LANDSCAPE ARCHITECTURE

PROJECT NUMBER 448-90792	DESIGN AEG	DRAWN JAK
REVISIONS:	APPROVED	DATE 9/26/17
	SCALE Noted	SHEET <b>5 OF 14</b>

I:\Projects\Brookfield Addition\_1604P190\Engineering\WTR ENT\_WTR PLANS.dwg