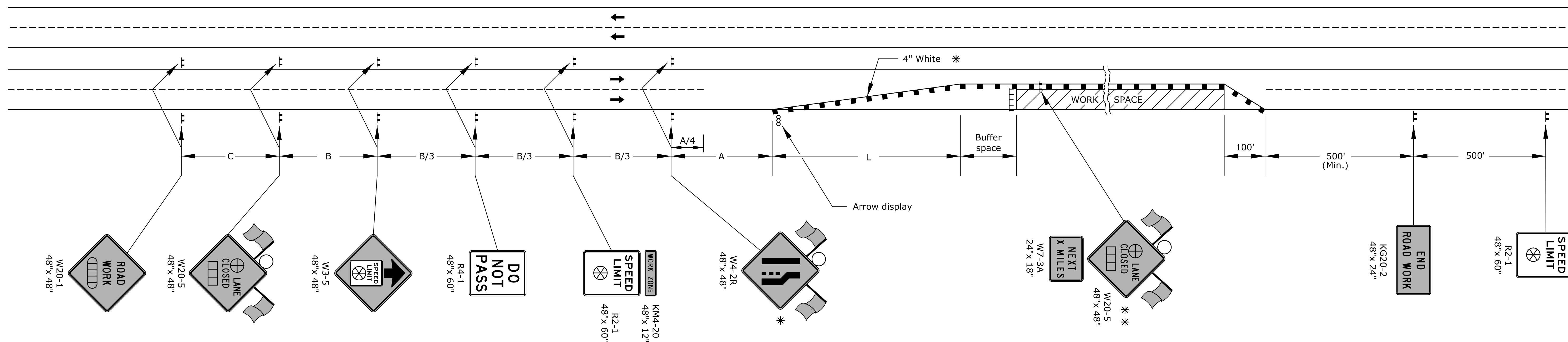
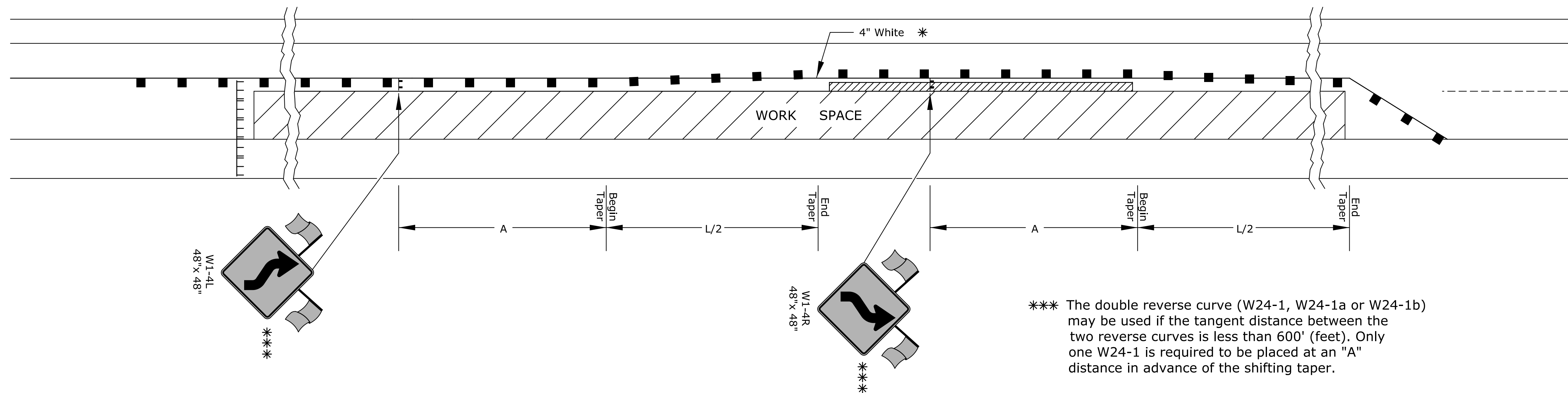


STATE	PROJECT NO.	YEAR	SHEET NO.	TOTAL SHEETS
KANSAS	XX-XX XX-XXXX-XX	XXXX	XXX	XXX

SHIFTING TAPER DETAIL

Add signs and devices as shown for work inside a closed lane that extends near to (or into) the open traffic lane.



- ▤ Type 3 barricades
- X Length to the nearest whole mile
- Channelizing device
- ▭ Ahead, 1500 ft, or 1 mile
- ▭ Ahead, 1000 ft, 1500 ft, or 1/2 mile
- ⊕ Right or left
- ⊗ Speed to be determined by the Engineer
- Type "A" low intensity warning light

* For left lane closures use W4-2L and yellow edge line along channelizing devices.

* * The W20-5 (⊕ Lane Closed) and W7-3A (Next X Miles) signs should be placed at 2 mile increments on a project of 4 miles or longer.

Left-side signs shall be omitted for a four-lane undivided highway.

One flagger should be stationed within each multi-lane roadway activity area where work is in a closed lane adjacent to traffic and not separated by a concrete safety barrier system.

Plotted : 01-JUN-2015 13:54

Drawn By : mushook
File : te744.dgn

NO.	DATE	REVISIONS	BY	APP'D
3				
2				
1				

KANSAS DEPARTMENT OF TRANSPORTATION

**TRAFFIC CONTROL
LANE CLOSURE ON MULTILANE HWY**

TE744

FHWA APPROVAL	06/01/15	APP'D	Kristina Ericksen
DESIGNED	B.A.H.	DETAILED	R.W.B.
QUANTITIES	TRACED	DESIGN CK.	DETAIL CK.
QUAN. CK.	TRACE CK.		

Sh. No. XXX

KDOT Graphics Certified