

# SANITARY SEWER ABANDONMENT

## FOLEY EQUIPMENT

1550 S. WEST STREET

CITY OF WICHITA, KANSAS

Gary Janzen, P.E. City Engineer

2272 PPS

O.C.A. NO. 607861

### GENERAL NOTES:

- The Contractor shall comply with all applicable safety regulations. All construction shall be completed following current City Standard Specifications and Special Provisions.
- Contractor will be required to provide notice to utility companies a minimum of seventy-two (72) hours prior to any excavation, as follows:

Kansas One-Call 687-2470

The Contractor must notify the following in case of an emergency:

Cox Communications	260-7204
Kansas Gas Service	1-888-482-4950
Black Hills Energy	941-1628
Westar	383-8600
AT&T	1-800-286-8313
City of Wichita Water Department	262-6000
City of Wichita Sewer Maintenance	262-6000

- Utility service lines, poles, etc. are to be adjusted as necessary by others prior to construction unless the plans specifically call for their adjustment by the Contractor or unless the plans specifically identify a utility to be adjusted by its owner during construction. Existing utilities and their location, as shown on the plans, represent the best information obtainable for design. The Contractor will be required to work around existing utilities within the right-of-way which do not conflict with proposed construction.

- Rubble from the removal of miscellaneous structures and excess excavation which is to be wasted shall be disposed of on sites to be provided by the Contractor. These sites shall be approved by the Engineer as to suitability, appearance and site location. Locations, in the opinion of the Engineer, that will leave an unsightly appearance will not be approved. All disposal sites must be approved by the Kansas Department of Health and Environment. Material either stockpiled or disposed of in a flood plain will require a Kansas State Board of Agriculture permit. Any material dumped in waters of the United States or wetlands is subject to U.S. Corps of Engineers permitting regulations. Any material buried or stockpiled beyond approved construction limits will require additional archaeological investigations unless buried in a previously approved borrow location.

- Trees and shrubs in public right-of-way which are in direct conflict with proposed new construction shall be removed by the Contractor with the Engineer's approval. Trees and shrubs which are not in direct conflict with proposed new construction shall be saved and protected from damage.

- The Contractor shall give all property owners and/or tenants of developed property abutting the construction of this project a minimum of ten (10) days notice prior to start of construction.

- The Contractor shall be responsible for preserving property irons. The Contractor will be required to re-establish any property irons which are damaged or destroyed by his construction operations. Such irons shall be re-established by a licensed land surveyor in accordance with state laws.

- If traffic will be impacted by construction, a traffic control plan must be submitted and approved by the City Traffic Engineer, Brian Coon at [traffic@wichita.gov](mailto:traffic@wichita.gov) before construction can begin. The Contractor shall be responsible for all traffic control measures to facilitate construction. All construction zone markings and signage shall conform to the latest version of the Manual on Uniform Traffic Control Devices (MUTCD) as published by the US Dept. of Transportation, Federal Highway Administration. All costs associated with construction markings and signage shall be the Contractors responsibly.

- All elevations shown are NAVD 88.

- All areas disturbed during construction that will not be under proposed pavement shall be restored to match existing conditions.

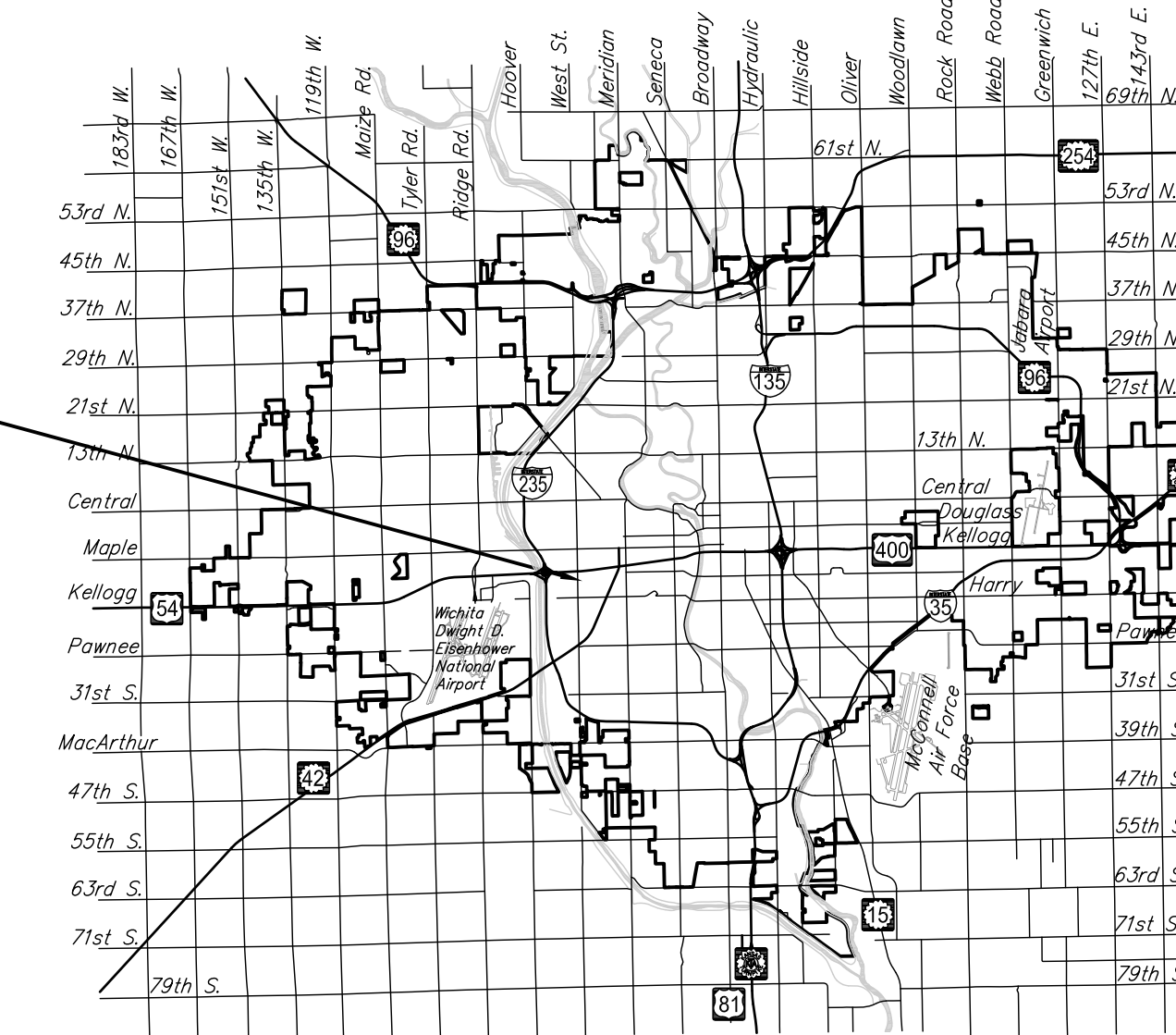
- The Contractor shall protect from damage and support existing utilities through constructions as approved by the utility owner and the Engineer at the contractors expense.

- Contractor shall limit the extent of trench openings overnight and weekends to less than 50 feet.

- Any sidewalk, drive approach, curb, or street pavement removed to construct project must have a pavement cut permit and be replaced by the City contractor. Permits can be obtained by calling 316-268-4501 or 316-268-4480.

AS-BUILT PLANS  
CONTRACTOR: PEARSON CONSTRUCTION  
INSPECTOR: LEVI TURNER  
RUGGLES & BOHM  
PDF BY: LCT 10-04-2017

PROJECT LOCATION

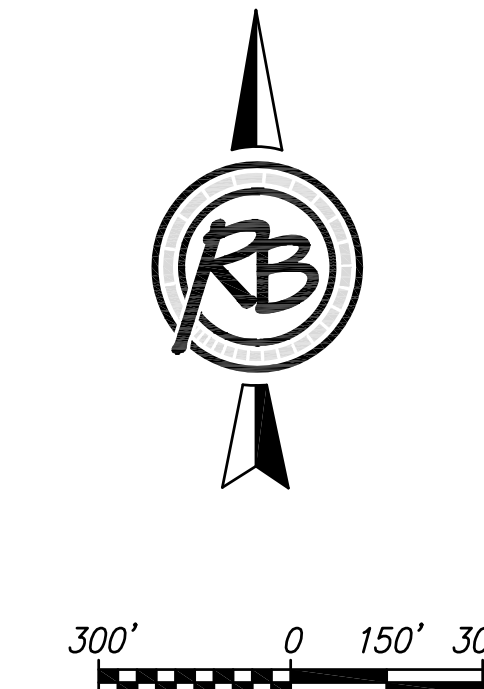


Vicinity Map

### Sheet Index

- TITLE SHEET
- PLAN & PROFILE

Sanitary Sewer Standards SS-101 & SS-102, and Erosion Control Standards SW-501 thru SW-505 are available on the City's website.



APPROVED AS NOTED  
BY WICHITA PUBLIC WORKS  
ENGINEERING DIVISION

Engineering *Rebendil 4/29/16*

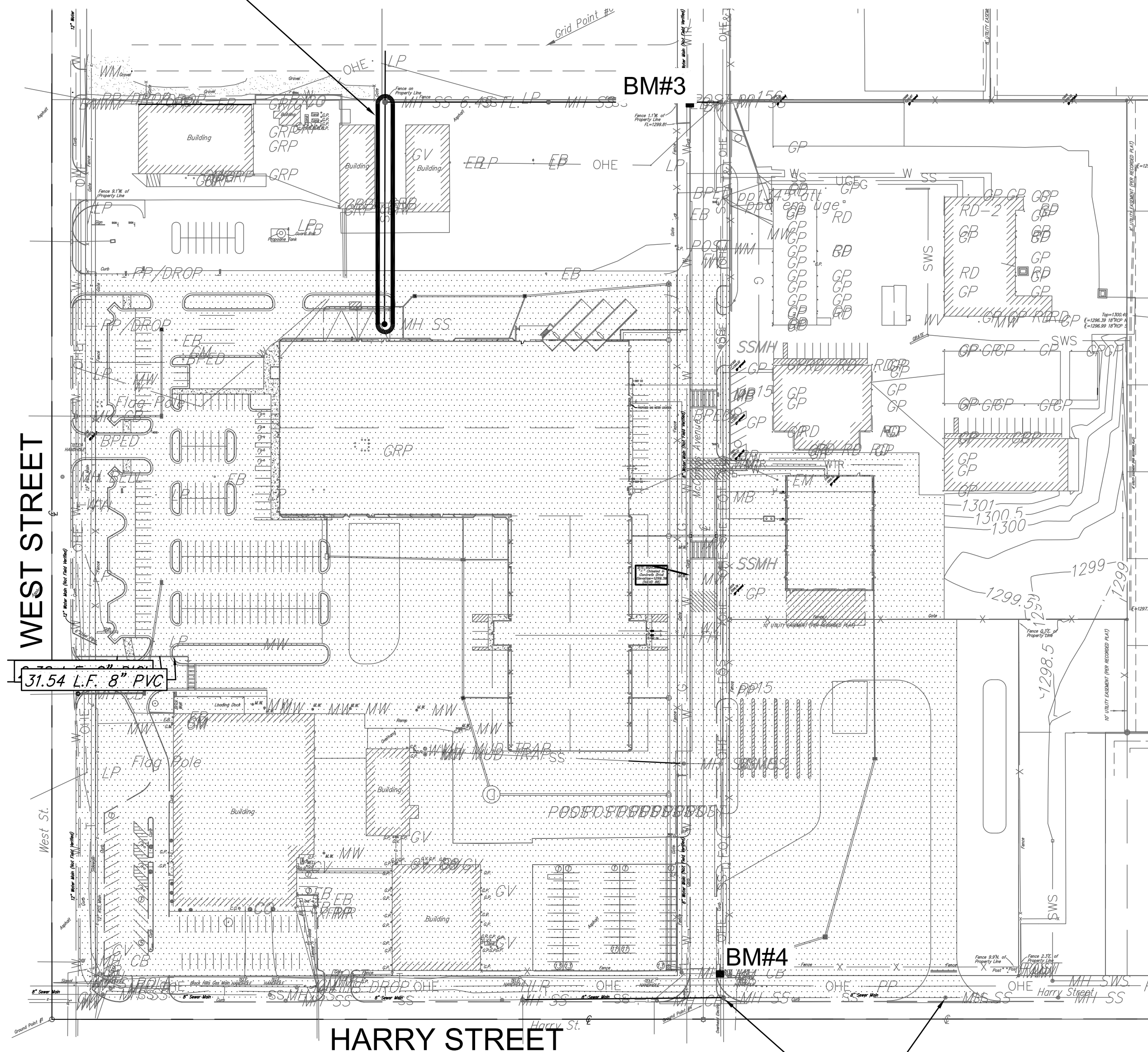
Utilities *[Signature] 4-29-16*

NOTE TO CONTRACTORS

Installation, inspection and testing for this project is to be provided by a Licensed Consulting Engineering Firm under contract with the Owner/Developer. Said inspection to be in accordance with the City of Wichita standard construction engineering practices and certified by a Licensed Professional Engineer in the state of Kansas. No work shall be performed by the Contractor without such inspection nor shall any work be commenced without written authorization by the City Engineering. All Construction and Materials shall comply with the current City of Wichita Specifications and Standards and Special Provisions. (on file and available at [Wichita.gov](http://Wichita.gov)).

An approved copy of these plans signed by City staff are required on-site.

SS Line to be abandoned



WEST STREET

HARRY STREET

SS manholes to be adjusted

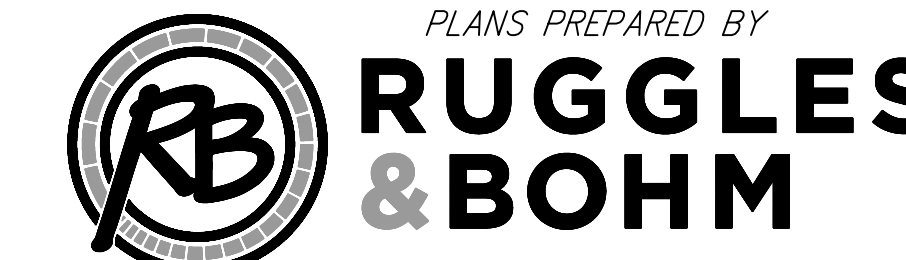
### Benchmarks

BENCHMARK:  
BM#3  
CHISELED SQUARE ON THE TOP OF CURB  
14.5' EAST & 4.5' SOUTH OF THE N.E. CORNER PARCEL #1  
ELEVATION = 1299.98 (NAVD88)

BENCHMARK:  
BM#4  
CHISELED SQUARE ON THE TOP OF SWS INLET 11.4' WEST & 2'  
NORTH OF THE SW CORNER PARCEL #2  
ELEVATION = 1299.05 (NAVD88)

IMPROVEMENT DISTRICT

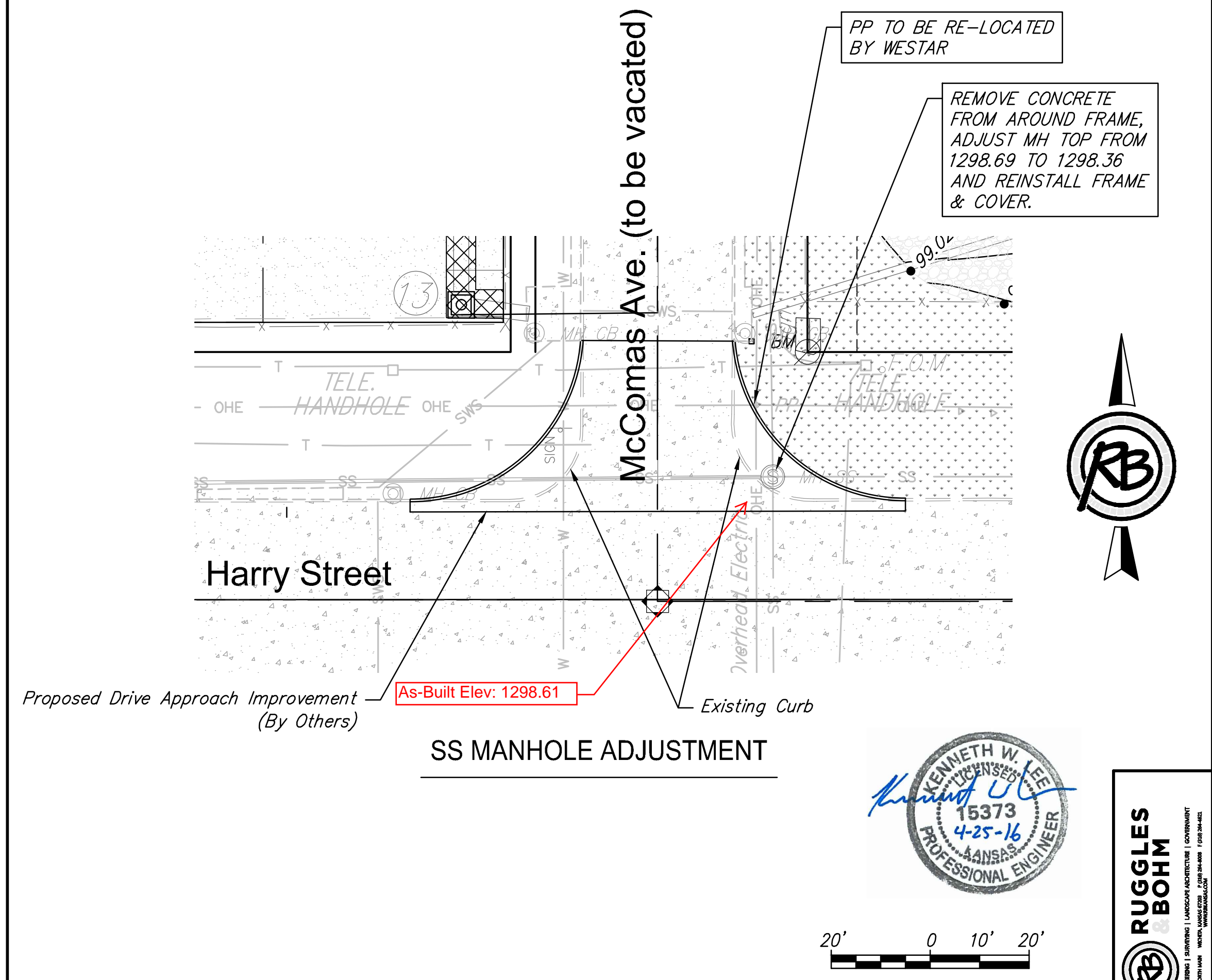
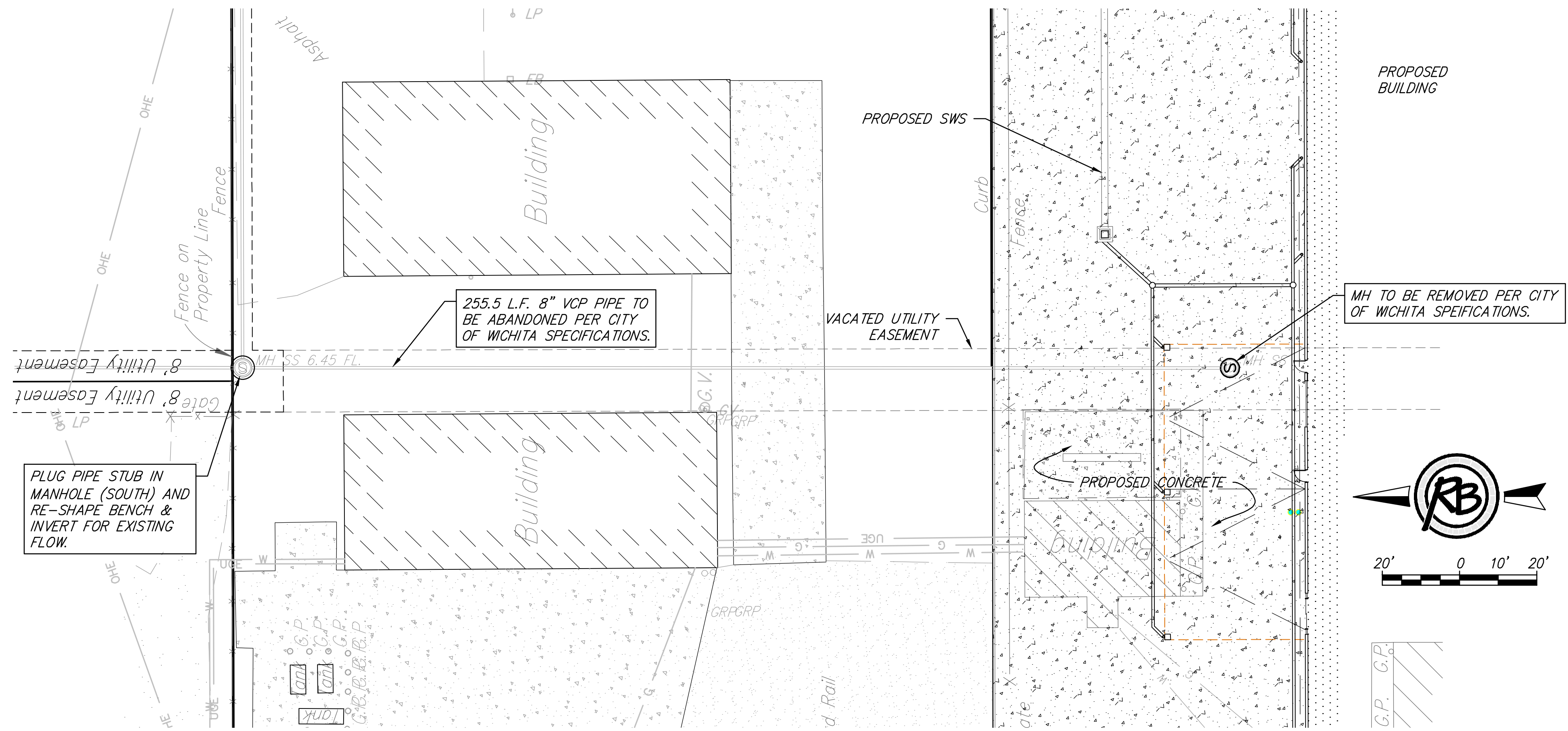
April 2016



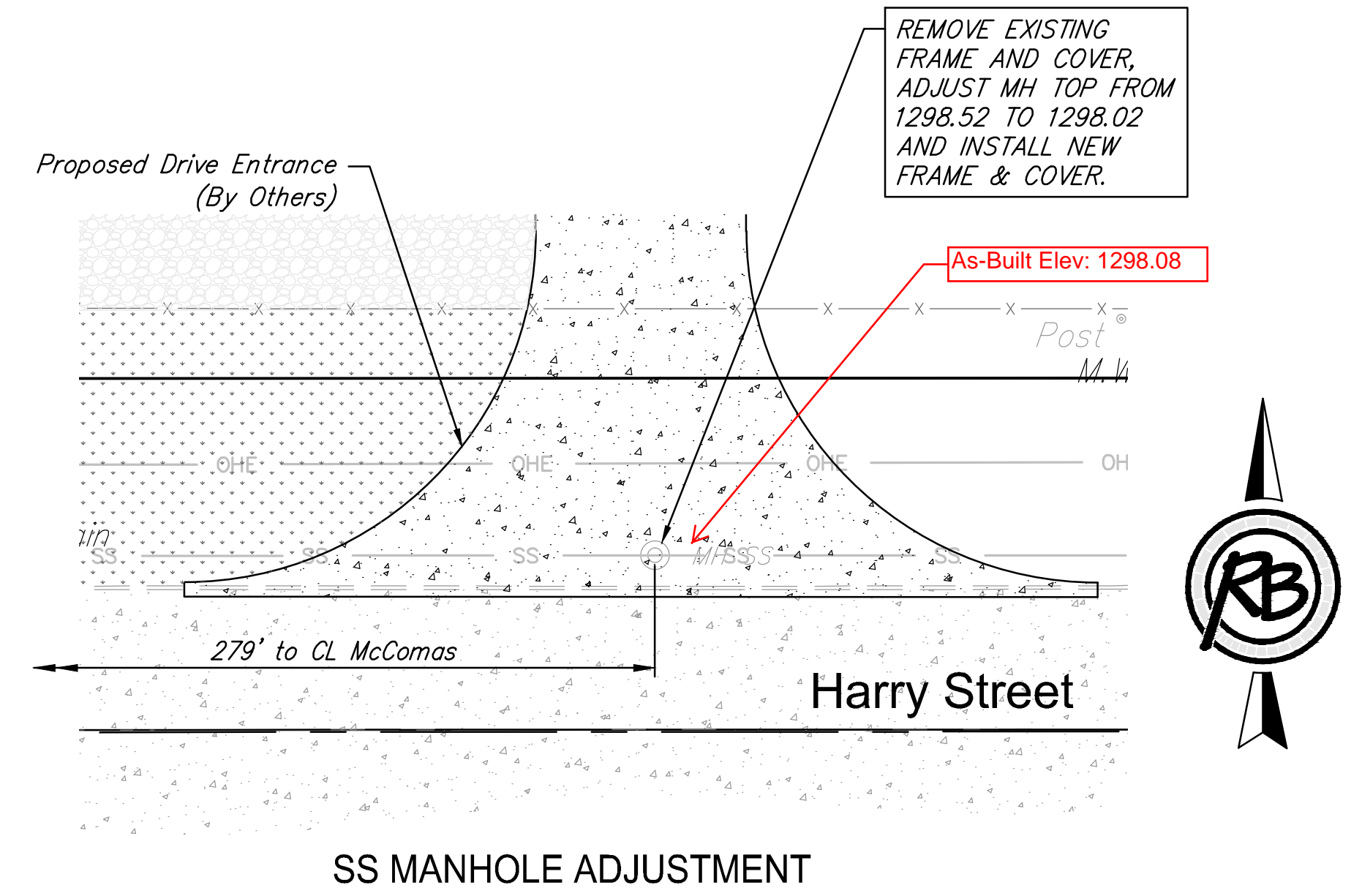
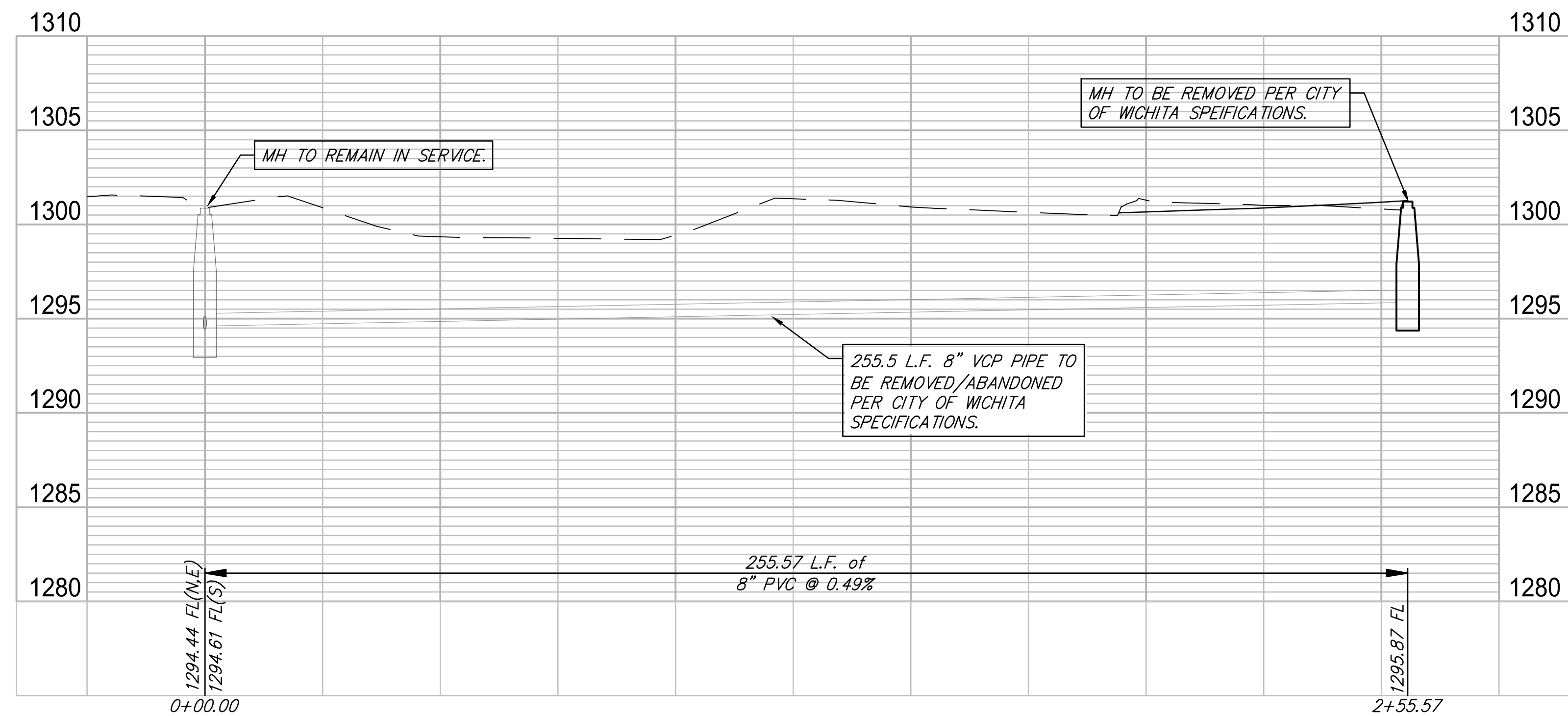
ENGINEERING | SURVEYING | LANDSCAPE ARCHITECTURE | GOVERNMENT

924 NORTH MAIN WICHITA, KANSAS 67203 P (316) 264-8008 F (316) 264-4621  
WWW.RBKANSAS.COM 4265D

F:\Projects\Projects 4200-4299\42650 (Foley Equipment Drainage West St-Compus)\42650 Engineering Base.dwg



AS-BUILT PLANS  
 CONTRACTOR: PEARSON CONSTRUCTION  
 INSPECTOR: LEVI TURNER  
 RUGGLES & BOHM  
 PDF BY: LCT 10-04-2017



**RUGGLES BOHM**  
 ENGINEERS ARCHITECTS PLANNERS  
 1000 W. 17th St., Suite 100, Wichita, KS 67202  
 (316) 261-1111

**FOLEY INDUSTRIES, INC.**  
**SS-Abandon & Adjustment**  
 Wichita, Kansas

REVIEW	3-3-2016	DATE	4-25-2016
DESIGN	KWL	DRAWN	DRS
PROJECT NUMBER	2272 PPS	DRAWING FILE	42650 Engineering Base
REB JOB	42650	SHEET	2 OF 2