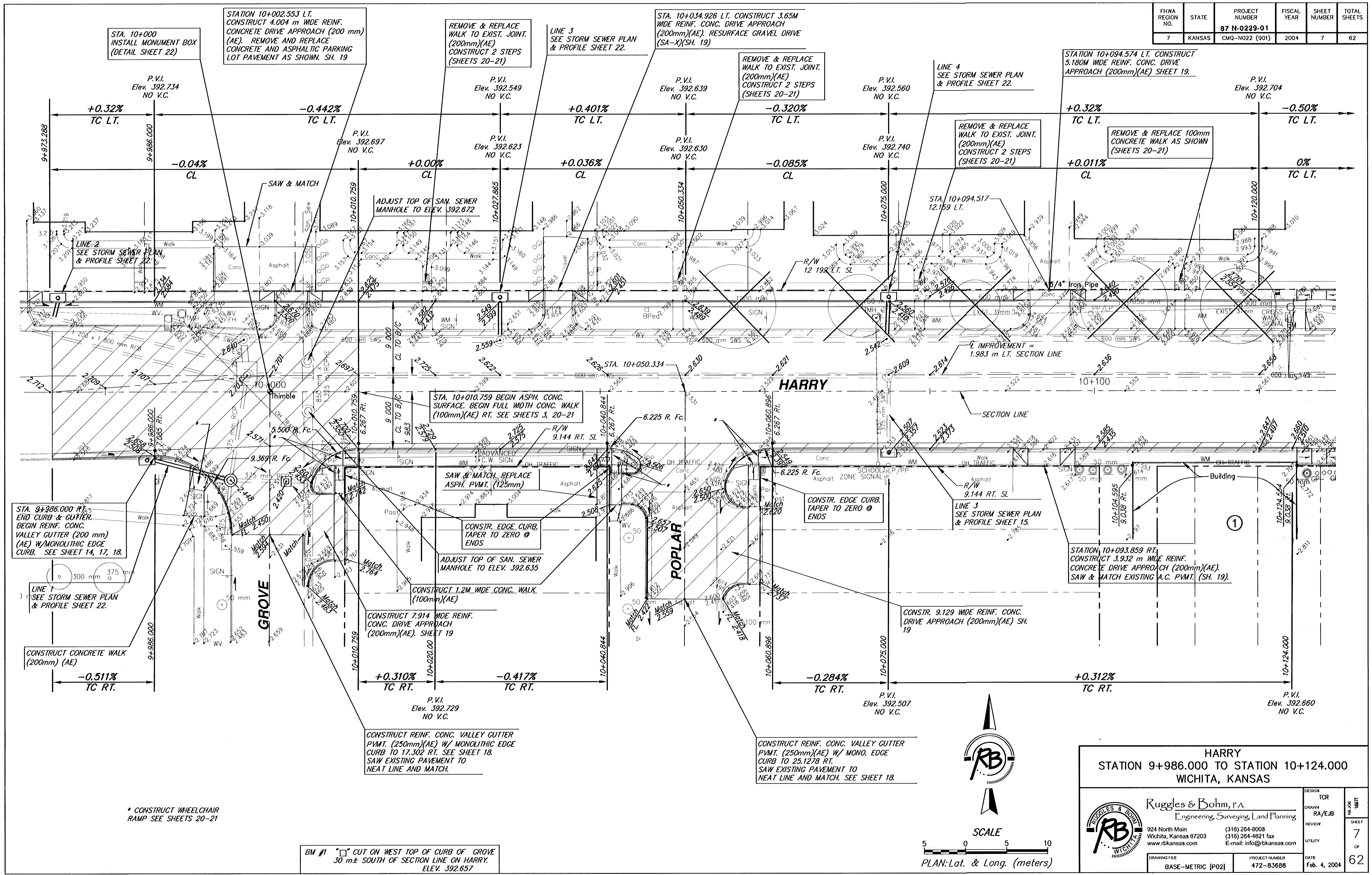


FHWA REGION NO.	STATE	PROJECT NUMBER	FISCAL YEAR	SHEET NUMBER	TOTAL SHEETS
7	KANSAS	87 N-0229-01	2004	7	62



STA. 10+000
INSTALL MONUMENT BOX
(DETAIL SHEET 22)

STATION 10+002.553 LT.
CONSTRUCT 4.004 m WIDE REINF.
CONCRETE DRIVE APPROACH (200 mm)
(AE). REMOVE AND REPLACE
CONCRETE AND ASPHALTIC PARKING
LOT PAVEMENT AS SHOWN. SH. 19

REMOVE & REPLACE
WALK TO EXIST. JOINT.
(200mm)(AE)
CONSTRUCT 2 STEPS
(SHEETS 20-21)

LINE 3
SEE STORM SEWER PLAN
& PROFILE SHEET 22.

STA. 10+034.926 LT. CONSTRUCT 3.65M
WIDE REINF. CONC. DRIVE APPROACH
(200mm)(AE). RESURFACE GRAVEL DRIVE
(SA-X)(SH. 19)

REMOVE & REPLACE
WALK TO EXIST. JOINT.
(200mm)(AE)
CONSTRUCT 2 STEPS
(SHEETS 20-21)

LINE 4
SEE STORM SEWER PLAN
& PROFILE SHEET 22.

STATION 10+094.574 LT. CONSTRUCT
5.180M WIDE REINF. CONC. DRIVE
APPROACH (200mm)(AE) SHEET 19.

REMOVE & REPLACE 100mm
CONCRETE WALK AS SHOWN
(SHEETS 20-21)

STA. 9+986.000 RT.
END CURB & GUTTER.
BEGIN REINF. CONC.
VALLEY CUTTER (200 mm)
(AE) W/MONOLITHIC EDGE
CURB. SEE SHEET 14, 17, 18.

STA. 10+010.759 BEGIN ASPH. CONC.
SURFACE. BEGIN FULL WIDTH CONC. WALK
(100mm)(AE) RT. SEE SHEETS 3, 20-21

SAW & MATCH, REPLACE
ASPH. PVMT. (125mm)

CONSTR. EDGE CURB.
TAPER TO ZERO @
ENDS

CONSTRUCT 1.2M WIDE CONC. WALK
(100mm)(AE)

CONSTRUCT 7.914 WIDE REINF.
CONC. DRIVE APPROACH
(200mm)(AE). SHEET 19

CONSTRUCT REINF. CONC. VALLEY CUTTER
PVMT. (250mm)(AE) W/ MONOLITHIC EDGE
CURB TO 17.302 RT. SEE SHEET 18.
SAW EXISTING PAVEMENT TO
NEAT LINE AND MATCH.

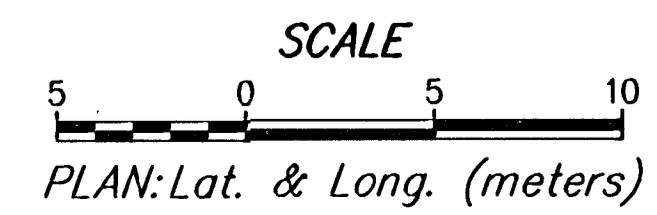
CONSTRUCT REINF. CONC. VALLEY CUTTER
PVMT. (250mm)(AE) W/ MONO. EDGE
CURB TO 25.1278 RT.
SAW EXISTING PAVEMENT TO
NEAT LINE AND MATCH. SEE SHEET 18.

STATION 10+093.859 RT.
CONSTRUCT 3.932 m WIDE REINF.
CONCRETE DRIVE APPROACH (200mm)(AE).
SAW & MATCH EXISTING A.C. PVMT. (SH. 19).

CONSTR. 9.129 WIDE REINF. CONC.
DRIVE APPROACH (200mm)(AE) SH.
19

* CONSTRUCT WHEELCHAIR
RAMP SEE SHEETS 20-21

BM #1 " " CUT ON WEST TOP OF CURB OF GROVE
30 m± SOUTH OF SECTION LINE ON HARRY.
ELEV. 392.657



HARRY
STATION 9+986.000 TO STATION 10+124.000
WICHITA, KANSAS

 Ruggles & Bohm, P.A. Engineering, Surveying, Land Planning 924 North Main Wichita, Kansas 67203 www.rbkansas.com	(316) 264-8008 (316) 264-4621 fax E-mail: info@rbkansas.com	DESIGN TCR DRAWN RA/EJB REVIEW UTILITY DATE Feb. 4, 2004	SHEET 7 OF 62
	DRAWING FILE BASE--METRIC {P02}	PROJECT NUMBER 472-83688	