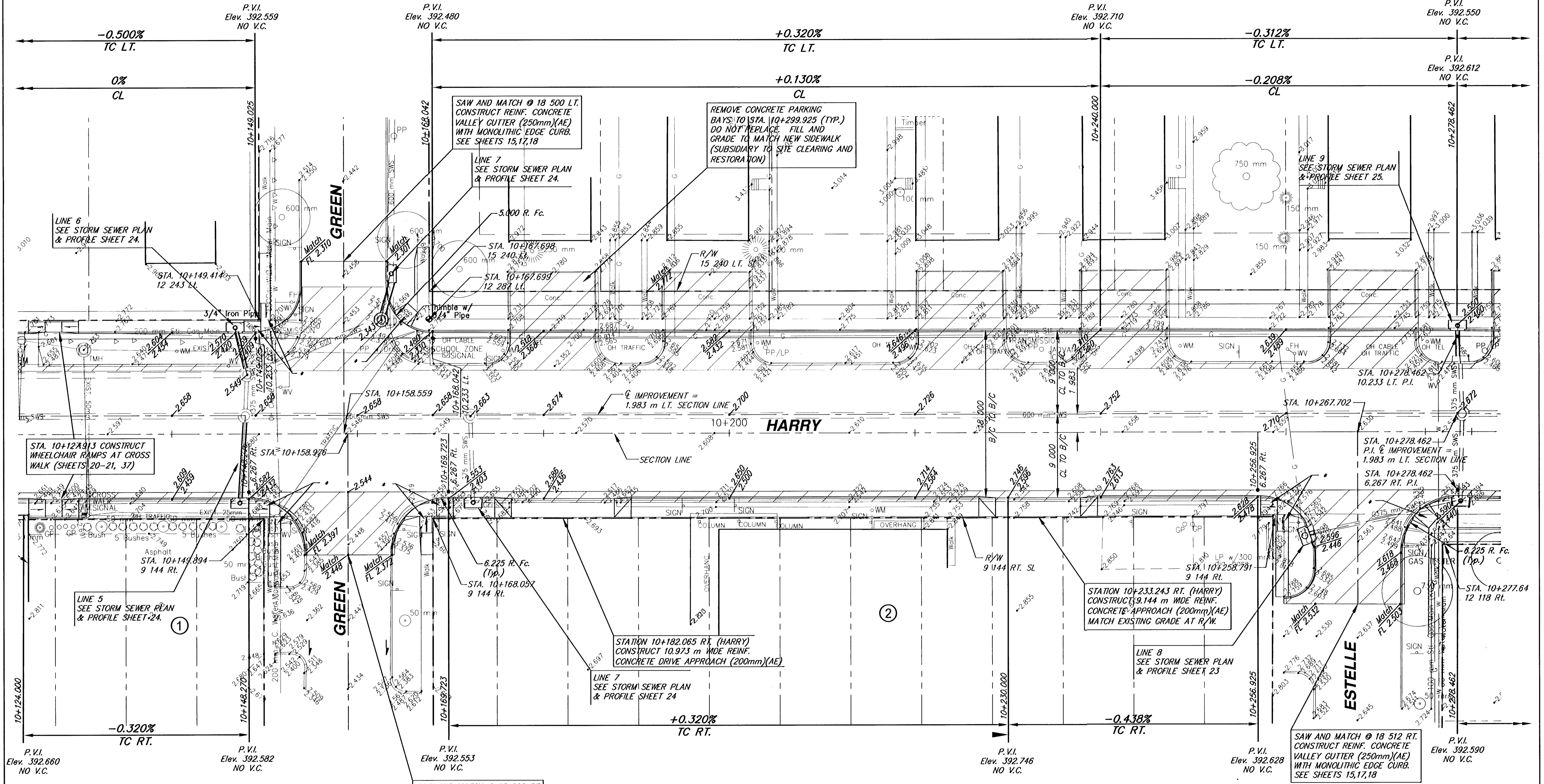


FHWA REGION NO.	STATE	PROJECT NUMBER	FISCAL YEAR	SHEET NUMBER	TOTAL SHEETS
7	KANSAS	CMQ-N022 (901)	2004	8	62



STA. 10+124.913 CONSTRUCT WHEELCHAIR RAMP AT CROSS WALK (SHEETS 20-21, 37)

SAW AND MATCH @ 18 500 LT. CONSTRUCT REINF. CONCRETE VALLEY GUTTER (250mm)(AE) WITH MONOLITHIC EDGE CURB. SEE SHEETS 15,17,18

REMOVE CONCRETE PARKING BAYS TO STA. 10+299.925 (TYP.) DO NOT REPLACE. FILL AND GRADE TO MATCH NEW SIDEWALK (SUBSIDIARY TO SITE CLEARING AND RESTORATION)

LINE 9 SEE STORM SEWER PLAN & PROFILE SHEET 25.

LINE 5 SEE STORM SEWER PLAN & PROFILE SHEET 24.

STATION 10+182.065 RT. (HARRY) CONSTRUCT 10.973 m WIDE REINF. CONCRETE DRIVE APPROACH (200mm)(AE)

STATION 10+233.243 RT. (HARRY) CONSTRUCT 9.144 m WIDE REINF. CONCRETE APPROACH (200mm)(AE) MATCH EXISTING GRADE AT R/W.

SAW AND MATCH @ 18 512 RT. CONSTRUCT REINF. CONCRETE VALLEY GUTTER (250mm)(AE) WITH MONOLITHIC EDGE CURB. SEE SHEETS 15,17,18

SAW AND MATCH @ 13 006 RT. CONSTRUCT REINF. CONCRETE VALLEY GUTTER (250mm)(AE) WITH MONOLITHIC EDGE CURB. SEE SHEETS 15,17,18

* CONSTRUCT WHEELCHAIR RAMP SEE SHEETS 20-21

BM #2 " " CUT ON WEST TOP OF CURB OF GREEN 30 m± SOUTH OF SECTION LINE ON HARRY. ELEV. 392.505

HARRY
STATION 10+124.000 TO STATION 10+278.462
WICHITA, KANSAS

<p>Ruggles & Bohm, P.A. Engineering, Surveying, Land Planning</p> <p>924 North Main Wichita, Kansas 67203 www.rbkansas.com</p>	<p>DESIGN TCR</p> <p>DRAWN RA/EJB</p> <p>REVIEW</p> <p>UTILITY</p> <p>DATE Feb. 4, 2004</p>	<p>SHEET 8</p> <p>OF 62</p>
	<p>DRAWING FILE BASE-METRIC {P03}</p> <p>PROJECT NUMBER 472-83686</p>	

