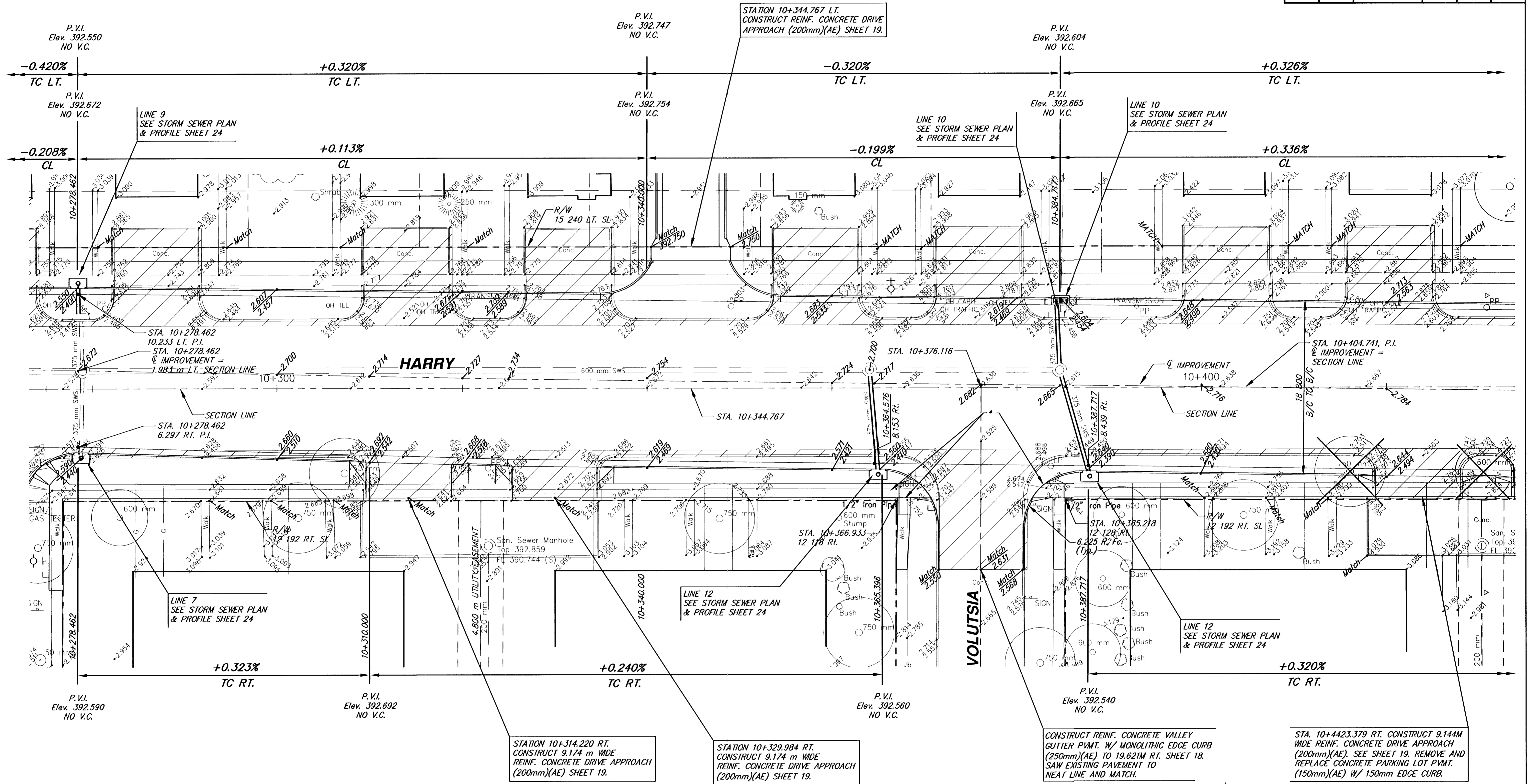
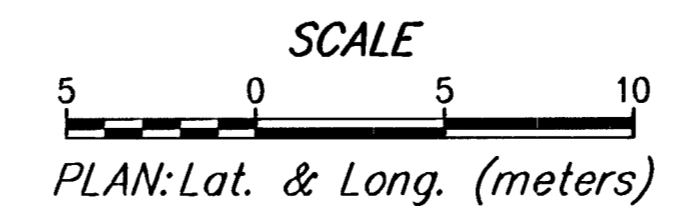


FHWA REGION NO.	STATE	PROJECT NUMBER	FISCAL YEAR	SHEET NUMBER	TOTAL SHEETS
7	KANSAS	87 N-0229-01	2004	9	62



BM #3 "□" CUT ON WEST TOP OF CURB OF VOLUTSIA  
34.5 m ± SOUTH OF SECTION LINE ON HARRY.  
ELEV. 392.730



**HARRY**  
STATION 10+278.462 TO STATION 10+420.000  
WICHITA, KANSAS

**Ruggles & Bohm, P.A.**  
Engineering, Surveying, Land Planning

924 North Main (316) 264-8008  
Wichita, Kansas 67203 (316) 264-4621 fax  
www.rbkansas.com E-mail: info@rbkansas.com

DESIGN TCR	9 OF 62
DRAWN RA/EJB	
REVIEW	
UTILITY	SHEET
DRAWING FILE BASE-METRIC {P04}	PROJECT NUMBER 472-83688
DATE Feb. 4, 2004	