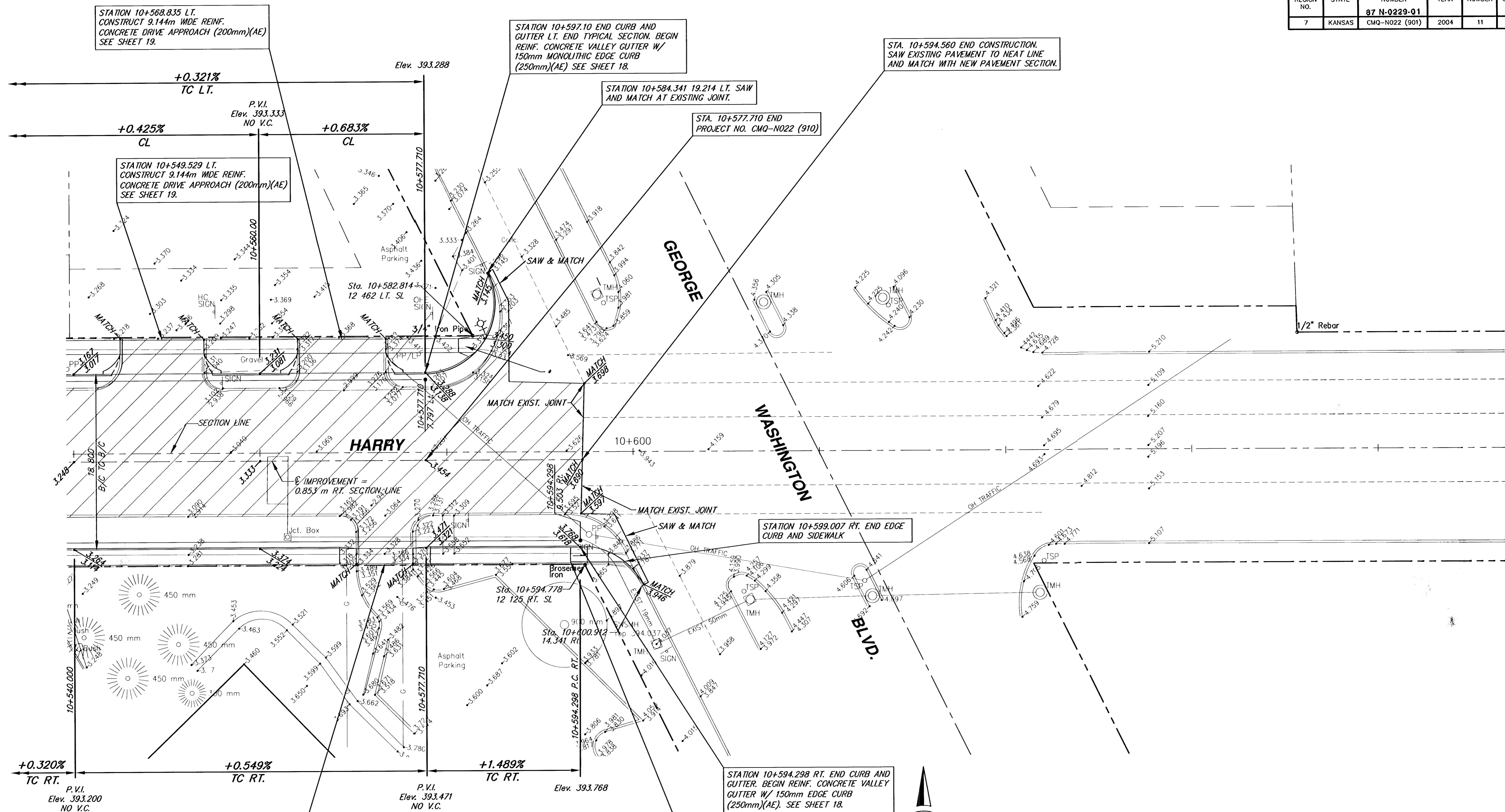


FHWA REGION NO.	STATE	PROJECT NUMBER	FISCAL YEAR	SHEET NUMBER	TOTAL SHEETS
7	KANSAS	87 N-0229-01	2004	11	62



STATION 10+568.835 LT.
CONSTRUCT 9.144m WIDE REINF.
CONCRETE DRIVE APPROACH (200mm)(AE)
SEE SHEET 19.

STATION 10+597.10 END CURB AND
GUTTER LT. END TYPICAL SECTION. BEGIN
REINF. CONCRETE VALLEY GUTTER W/
150mm MONOLITHIC EDGE CURB
(250mm)(AE) SEE SHEET 18.

STA. 10+594.560 END CONSTRUCTION.
SAW EXISTING PAVEMENT TO NEAT LINE
AND MATCH WITH NEW PAVEMENT SECTION.

STATION 10+584.341 19.214 LT. SAW
AND MATCH AT EXISTING JOINT.

STA. 10+577.710 END
PROJECT NO. CMQ-N022 (910)

STATION 10+549.529 LT.
CONSTRUCT 9.144m WIDE REINF.
CONCRETE DRIVE APPROACH (200mm)(AE)
SEE SHEET 19.

Sta. 10+582.814
12 462 LT. SL.

STATION 10+599.007 RT. END EDGE
CURB AND SIDEWALK

Sta. 10+594.778
12 125 RT. SL.

Sta. 10+600.912
14.341 RT.

STATION 10+594.298 RT. END CURB AND
GUTTER. BEGIN REINF. CONCRETE VALLEY
GUTTER W/ 150mm EDGE CURB
(250mm)(AE). SEE SHEET 18.

STATION 10+593.236 RT. BEGIN
WHEELCHAIR RAMP W/ EDGE CURB
(100mm CONG.)(AE) SEE SHEETS 20-21.

STATION 10+573.341 RT.
CONSTRUCT REINF. CONCRETE DRIVE
APPROACH (200mm)(AE) SEE SHEET 19.

BM #5 "□" CUT ON EAST EDGE OF FLAG POLE IN
FRONT OF COKE COLA BOTTLING CO. 36 m±
SOUTH OF SECTION LINE ON HARRY.
ELEV. 394.084

HARRY STATION 10+555.000 TO END WICHITA, KANSAS	
 Ruggles & Bohm, P.A. Engineering, Surveying, Land Planning 924 North Main Wichita, Kansas 67203 www.rbkansas.com (316) 284-8008 (316) 284-4621 fax E-mail: info@rbkansas.com	DESIGN TCR DRAWN RA/EJB REVIEW UTILITY
	SHEET 11 OF 62
DRAWING FILE BASE-METRIC {P08}	PROJECT NUMBER 472-83686
DATE Feb. 25, 2004	

