

# GENERAL NOTES:

- The Contractor shall comply with all applicable safety regulations. All construction shall be completed following current City Standard Specifications and Special Provisions.
- Contractor will be required to provide notice to utility companies a minimum of seventy-two (72) hours prior to any excavation, as follows:

Kansas One-Call 687-2470

The Contractor must notify the following in case of an emergency:

AT&T 1-800-246-8464  
 Black Hills Energy 1-800-694-8989  
 City of Wichita Water 1-316-268-4555  
 City of Wichita Sewer 1-316-268-4073  
 City of Wichita Stormwater 1-316-268-4090  
 City of Wichita Traffic 1-316-268-4034  
 Cox Communications 1-888-249-3530  
 Kansas Gas Service 1-888-482-4950  
 Westar Energy 1-800-544-4857

- Utility service lines, poles, etc. are to be adjusted as necessary by others prior to construction unless the plans specifically call for their adjustment by the Contractor or unless the plans specifically identify a utility to be adjusted by its owner during construction. Existing utilities and their location, as shown on the plans, represent the best information obtainable for design. The Contractor will be required to work around existing utilities within the right-of-way which do not conflict with proposed construction.
- Rubble from the removal of miscellaneous structures and excess excavation which is to be wasted shall be disposed of on sites to be provided by the Contractor. These sites shall be approved by the Engineer as to suitability, appearance and site location. Locations, in the opinion of the Engineer, that will leave an unsightly appearance will not be approved. All disposal sites must be approved by the Kansas Department of Health and Environment. Material either stockpiled or disposed of in a flood plain would require a Kansas State Board of Agriculture permit. Any material dumped in waters of the United States or wetlands is subject to U.S. Corps. of Engineers permitting regulations. Any material buried or stockpiled beyond approved construction limits would require additional archaeological investigations unless buried in a previously approved borrow location.
- Trees and shrubs in public right-of-way which are in direct conflict with proposed new construction shall be removed by the Contractor with the Engineer's approval. Trees and shrubs which are not in direct conflict with proposed new construction shall be saved and protected from damage.
- The Contractor shall give all property owners and/or tenants of developed property abutting the construction of this project a minimum of ten (10) days notice prior to start of construction.
- The Contractor shall be responsible for preserving property irons. The Contractor will be required to re-establish any property irons which are damaged or destroyed by his construction operations. Such irons shall be re-established by a licensed land surveyor in accordance with state laws.
- The Water Distribution Division shall field locate water valve one time during construction when requested by the Contractor. It shall be the Contractor's responsibility to preserve such field locations during the construction process. Water valves, valve boxes or fire hydrants damaged during construction shall be repaired by Contractor at his own expense. Valve boxes and water meters within the project limits shall be adjusted to match field grades.
- The Contractor shall notify the consultant engineer and Tom Mason with the City at 316-268-4574 with the anticipated construction start date and notify them of project completion. Staking and inspection for this project will be the responsibility of the Contractor.
- If traffic is impacted by construction, a traffic control plan must be submitted and approved by the City Traffic Engineer, Brian Coan at [traffic@wichita.gov](mailto:traffic@wichita.gov) before construction can begin. The Contractor shall be responsible for all traffic control measures to facilitate construction. All construction zone markings and signage shall conform to the latest version of Manual on Uniform Traffic Control Devices (MUTCD) as published by the US Dept. of Transportation, Federal Highway Administration. All costs associated with construction markings and signage shall be the Contractor's responsibility.
- All elevations shown are NAVD 88.
- All areas disturbed during construction that will not be under proposed pavement shall be restored to match existing conditions.

- A portion of excess excavated material shall be mounded around manholes which extend more than one (1) foot above the existing ground. Such mound shall be constructed with new development a six (6) foot diameter flat top with 4 to 1 side slopes down to the original ground. The elevation of the flat top of the mound shall be 0.4 foot below the top to the manhole.
- Geotechnical report available upon request.
- Contractor shall limit the extent of trench openings overnight and weekends to less than 50 feet.
- Contractor shall provide positive drainage away from all manhole covers.
- City maintenance of storm sewer ends at right-of-way last structure within easement or right-of-way line; privately owned and maintained.
- Any sidewalk, drive approach, or street pavement removed to construct project must have a pavement cut permit and be replaced by the City contractor. Permits can be obtained by calling 316-268-4501 or 316-268-4480.
- The inspecting firm shall submit to the City Stormwater Maintenance Division a digital copy of the CCTV inspection of the conduits and structures following construction. The digital file formation shall be compatible with the City input template. A copy of the template is available upon request at 316-268-4090.
- All existing and proposed erosion control measures including silt fencing, erosion control mat, straw bales, inlet barriers, and const. entrance shall be maintained throughout construction by the contractor and until project is accepted by the City of Wichita. The on-site engineer shall complete weekly reports on the status of erosion control measures. The contractor shall be required to comply with maintenance and/or replacement of erosion control measures as determined by the on-site engineer until project is accepted by City of Wichita. Maintenance and/or replacement of erosion control measures to be paid by L.S. bid item "Site Restoration".
- All excess excavation shall remain on-site and shall be stockpiled or spread at a location determined by the engineer.
- All areas disturbed during construction that will not be under pavement shall be seeded by others (site contractor).
- The Contractor shall not begin work on the project until the Project Inspector is assigned and on site. Any work completed without inspection will be required to be uncovered for inspection at the Contractor's expense.

## Benchmarks

BM #1: "□" Chiseled on Top of Curb, north EOR of north entrance. Elev. = 1282.51 (NAVD 88)

BM #2: "□" Chiseled on Top of Curb, south EOR of south entrance. Elev. = 1282.83 (NAVD 88)

# STORM SEWER IMPROVEMENTS

to serve

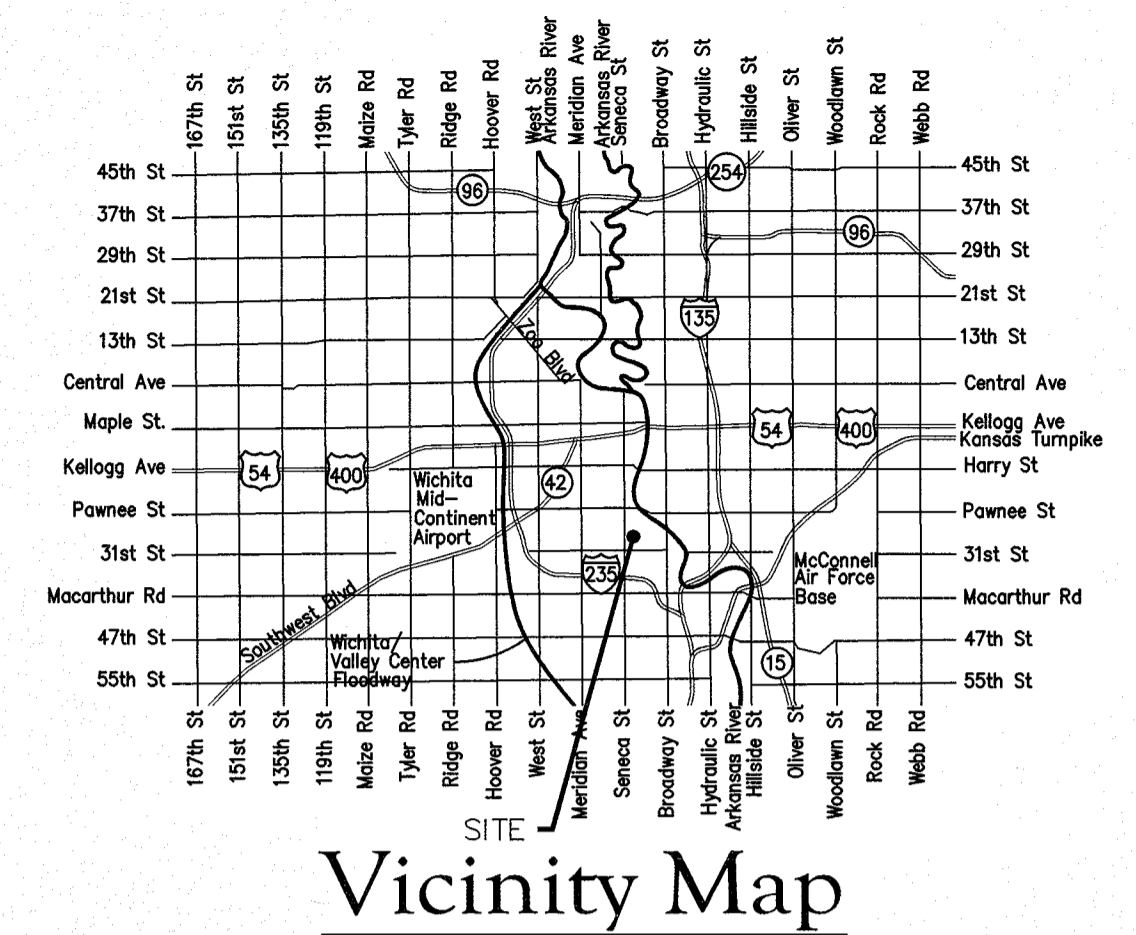
# LOT 2 ROBSON HEIGHTS 2ND ADD.

3060 S. SENECA

CITY OF WICHITA, KANSAS

Gary Janzen, P.E. City Engineer

Project Number  
0410 PPD (607861)



AS BUILTS

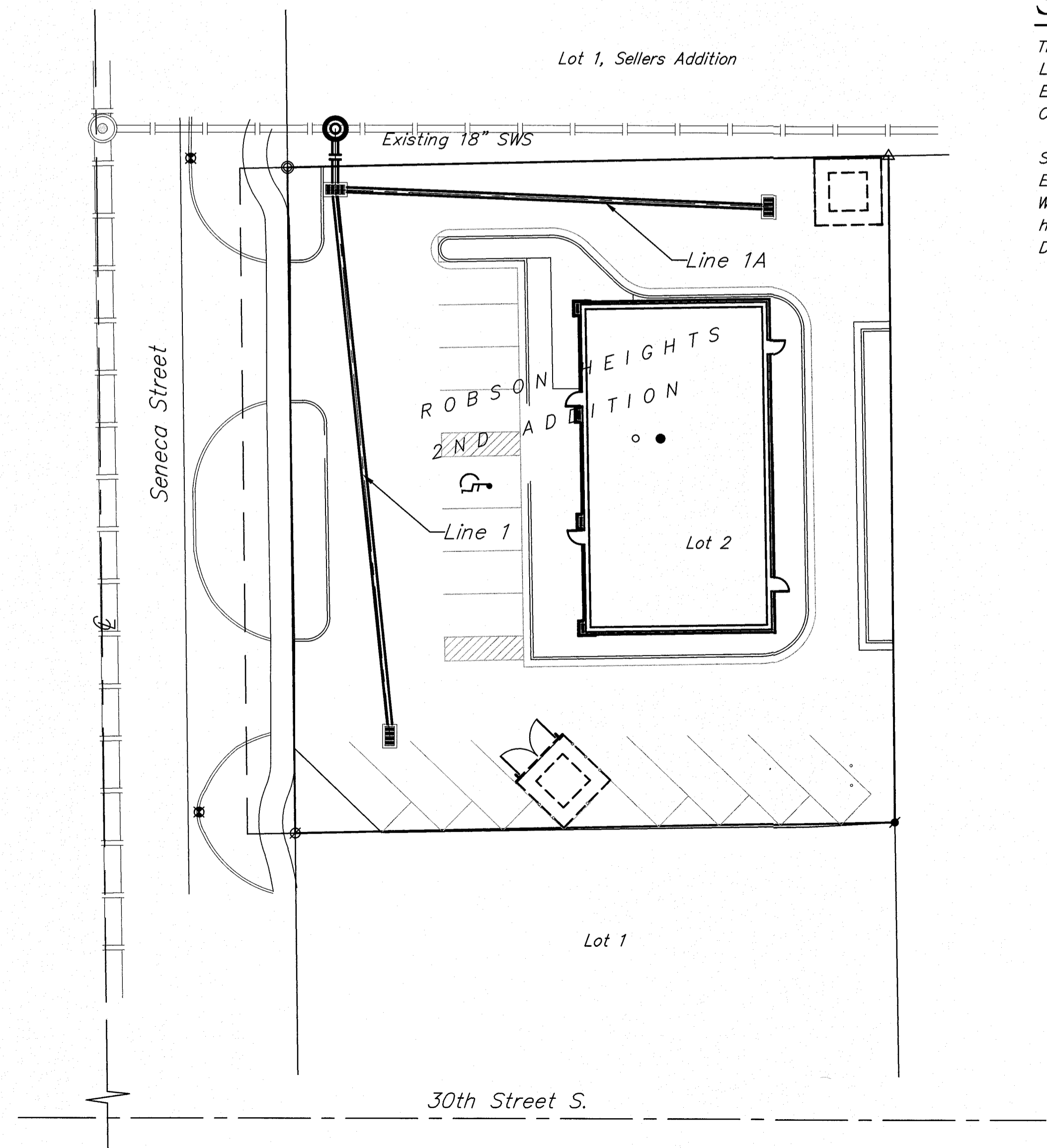
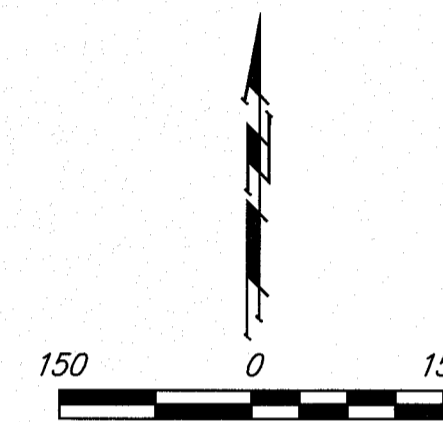
Contractor: Ewertz Excavation  
Inspector: Matt Perez  
Date: 9-27-17

KEMILLER

ENGINEERING PA

117 E. Lewis,  
Wichita, KS 67202

(316)264-0242



## Sheet Index

Title Sheet	1
Lines 1 & 1A	2
Erosion Control Plan	3
Copy of Plat	4

SWS Details SW-105, SW-301, SW-303, and Erosion Control Details available at City of Wichita web site at <http://www.wichita.gov/Government/Departments/PWU/Pages/Regulations.aspx>

**Stormwater Certification:**  
Redevelopment

These construction plans were prepared in accordance with the current Stormwater Management Regulations as set forth in the City of Wichita's Stormwater Management Ordinance 16.32 and the policies/guidelines presented in the Wichita/Sedgwick County Stormwater Manual.

Disturbed Area = 0.40 ac.  
 Water Quality Treatment: Offsite BMP program  
 Downstream Channel Protection: Not required  
 Detention: Not required due to site area and no change from existing land use.  
 The BMPs used for this development are silt fence, drop inlet protection and construction entrance.

APPROVED AS NOTED  
BY WICHITA PUBLIC WORKS ENGINEERING  
AND STORMWATER DIVISION

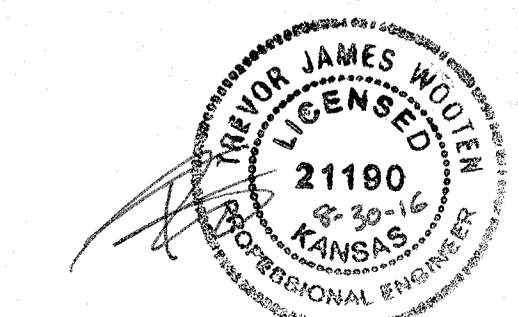
Engineering *Rebecca Duff* 9/19/16

Stormwater *[Signature]* 09/22/16

NOTE TO CONTRACTORS

Inspection and testing for this project is to be provided by a Licensed Consulting Engineering Firm under contract with the Owner/Developer. Said inspection to be in accordance with the City of Wichita standard construction engineering practices and certified by a Licensed Professional Engineer in the state of Kansas. No work shall be performed by the Contractor without such inspection nor shall any work be commenced without written authorization by City Engineering. All Construction and Materials shall comply with the current City of Wichita Specifications and Standards and Special Provisions (on file and available at Wichita.gov).

An approved copy of these plans signed by City staff are required on-site.



July 2016

Baughman Company, P.A. 315 Ellis St. Wichita, KS 67211 P 316-262-7271 F 316-262-0149  
ENGINEERING | SURVEYING | PLANNING | LANDSCAPE ARCHITECTURE



**SITE INFORMATION**

Total Area: 17,814.2 sq. ft. (±0.40 acres)  
 Disturbed Area: 17,814.2 sq. ft. (±0.40 acres)  
 Ex. Impervious Removed: 17,814.2 sq. ft. (±0.40 acres)  
 Added Impervious Area: ±17,455.2 sq. ft. (0.40 acres)

**LEGAL DESCRIPTION**

Lot 2, Robson Heights 2nd, Wichita, Kansas, Sedgwick County, Kansas

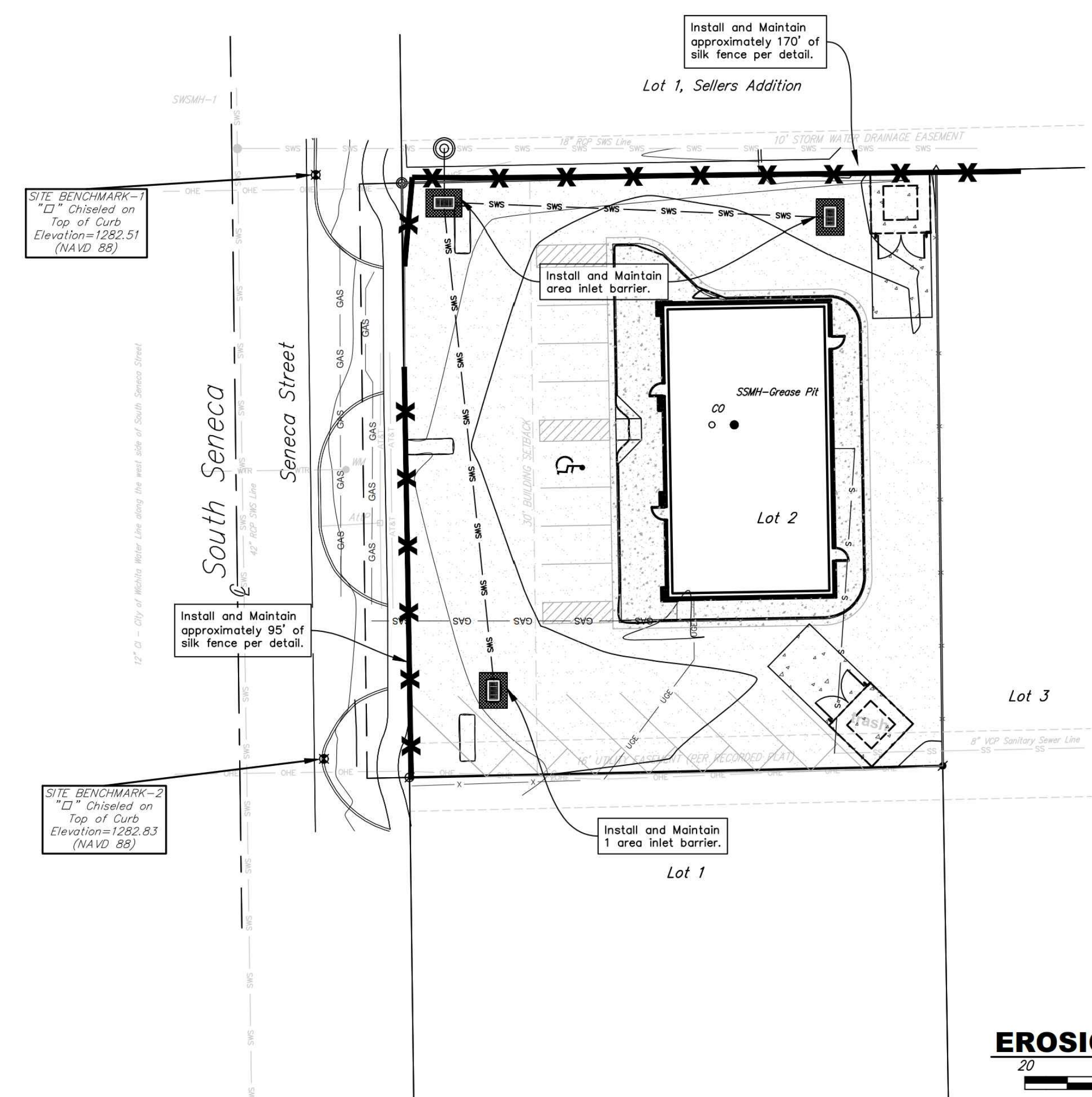
**BENCHMARKS**

SITE BENCHMARK-1  
 □ Chiseled on Top of Curb Elevation=1282.51 (NAVD 88)  
 SITE BENCHMARK-2  
 \*□ Chiseled on Top of Curb Elevation=1282.83 (NAVD 88)

**EROSION CONTROL NOTES**

- No land clearing or grading shall begin until all applicable erosion control measures have been installed. The Contractor shall comply with any unusual requirements as necessary for the site to be in compliance with standard EPA and KDHE regulations during construction, per this plan and City/KDHE/EPA specs.
- All exposed areas shall be seeded as specified within 30 days of final GRADING.
- Should construction stop for longer than 14 days, the site shall be seeded as specified.
- Maintain erosion control measures after each rain and at least once a week.
- This plan shall not be considered all inclusive as the contractor shall take all necessary precautions to prevent soil sediment from leaving the site.
- Contractor shall comply with all state and local ordinances that apply.
- Additional erosion and sediment control measures will be installed if deemed necessary by on site inspection.
- Land disturbing activities shall not commence until approval to do so has been received by governing authorities.
- If installation of storm drainage system should be interrupted by weather or nightfall, the pipe ends shall be covered with filter fabric.
- See Landscape Plan for ground treatments in all disturbed areas beyond impervious surfaces.
- This SWPP Plan should be in job trailer and/or on site at all times. The Contractor is responsible for any needed changes, updates or maintenance to BMP's on site. This plan may change and updates need to be recorded and documented on the plan. This plan is a flexible plan, due to changing site conditions and weather. Please inform Landscape Architect and/or Engineer of changes to plan.
- ANY substitutions for the sediment control devices shown, must be approved by the Landscape Architect and/or Engineer prior to any uses on site.

**FOR REFERENCE ONLY  
 NOT TO SCALE**



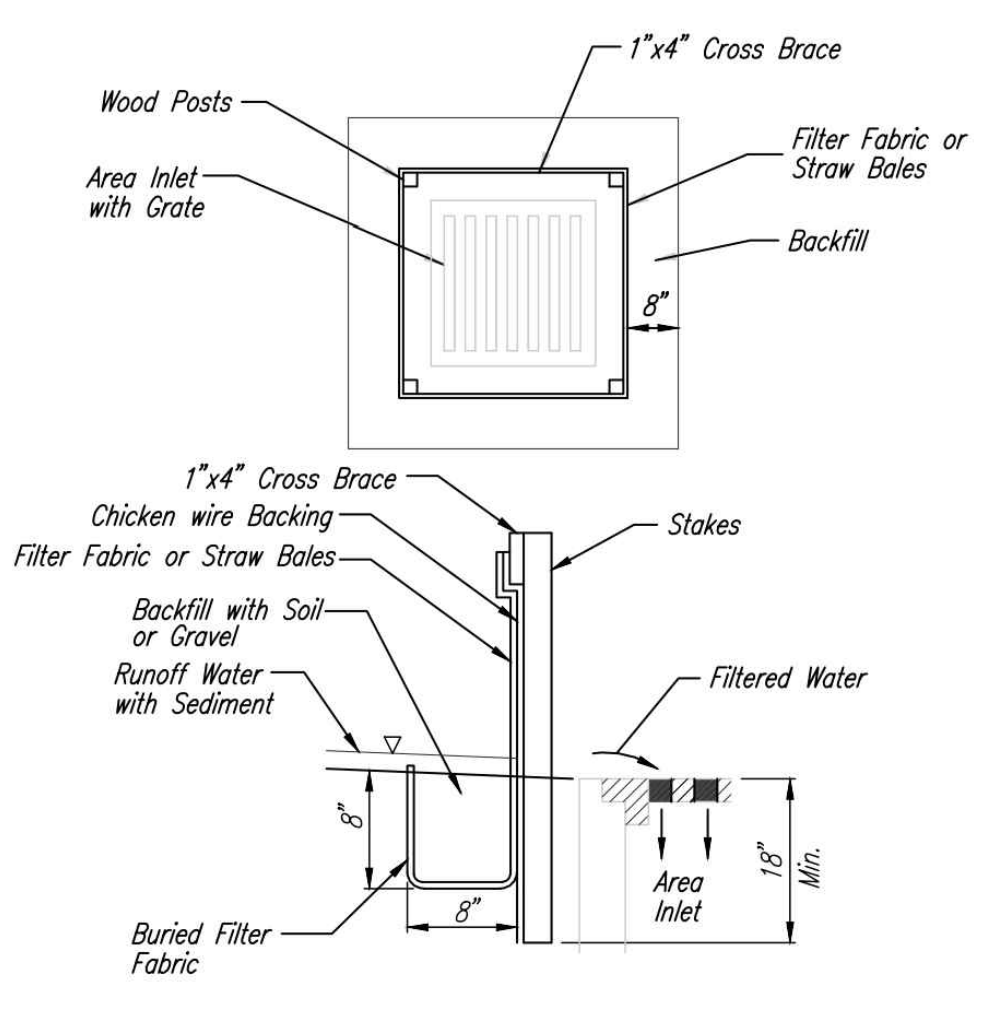
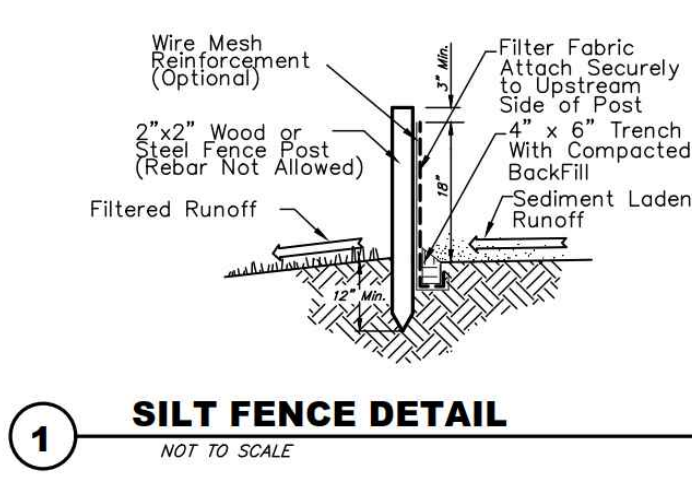
**EROSION CONTROL PLAN**  
 Scale 1" = 20'-0"

**EROSION CONTROL LEGEND**

- = Silt Fence
- = Curb Inlet Sediment Barrier
- = Area Inlet Sediment Barrier
- = Area Inlet Sediment Barrier

**LEGEND**

- Existing Utilities**
- USE — USE — USE — USE — Electric Underground
  - OHE — OHE — OHE — OHE — Electric Overhead
  - WTR — WTR — WTR — WTR — Water Line
  - GAS — GAS — GAS — GAS — Gas Line
  - PIPELINE — PIPELINE — PIPELINE — PIPELINE — Petroleum Pipeline
  - SWS — SWS — SWS — SWS — Storm Water Sewer Pipe
  - SS — SS — SS — SS — Sanitary Sewer Line
  - TELE — TELE — TELE — TELE — Telecommunication (AT&T)
  - CATV — CATV — CATV — CATV — Telecommunication (Cox)



**Robson Heights 2nd Add. Lot 2 EROSION CONTROL PLAN**

Baughman Company, P.A. 115 Elm St. Wichita, KS 67211 P: 316-262-7271 F: 316-262-0499  
 ENGINEERING | SURVEYING | PLANNING | LANDSCAPE ARCHITECTURE

PROJECT NUMBER	DESIGN	DRAWN
21190	DPGJ	DPGJ
REVISIONS:	APPROVED	DATE
	TJW	June 2016
	SCALE	AS SHOWN
	SHEET	3 OF 4

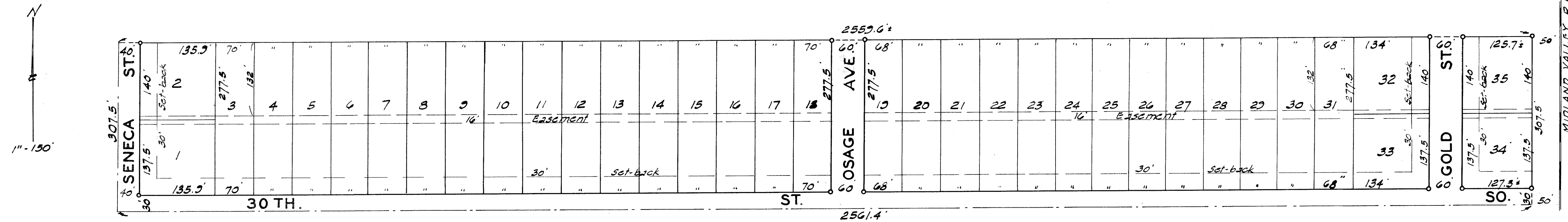
Professional Engineer Seal: JAMES W. WOLF, LICENSED PROFESSIONAL ENGINEER, KANSAS, No. 15475, Exp. 6-17-16

Baughman Company, P.A.  
 ENGINEERING | SURVEYING | PLANNING | LANDSCAPE ARCHITECTURE  
 115 Elm St. Wichita, KS 67211 P: 316-262-7271 F: 316-262-0499  
 www.baughmanpa.com  
 ROBSON HEIGHTS 2ND ADD.  
**EROSION CONTROL PLAN**  
 STORM WATER SEWER IMPROVEMENTS  
 SHEET 3 OF 4

# ROBSON HEIGHTS 2ND.

SEDGWICK COUNTY, KANSAS.

FOR REFERENCE ONLY  
NOT TO SCALE



State of Kansas }  
Sedgwick County } s.s. I, Clyde M. Baughman, surveyor  
in and for said county and state do hereby certify  
that I have surveyed and platted "ROBSON HEIGHTS  
2ND" Sedgwick County, Kansas, and that the acc-  
ompanying plat is a true and correct exhibit of  
the property surveyed described as follows:  
The North 307.5 feet of the South 245 feet, lying  
West of the Midland Valley Railroad in the S.W. 1/4  
Sec. 5- T-28-S, R-1-E, of 6th. P.M.

Clyde M. Baughman Surveyor

Know all men by these pres-  
ents that we O.L. Robson and Wilma J. Robson  
his wife have caused the land described in  
the surveyors certificate to be platted into lots  
and streets to be known as "ROBSON HEIGHTS  
2ND" Sedgwick County, Kansas. Easements are  
hereby granted as indicated on the plat for the  
construction and maintenance of all public  
utilities. The streets are hereby dedicated to  
and for the use of the public.

O. Robson Wilma J. Robson

State of Kansas }  
Sedgwick County } s.s. Be it remembered that on  
this 28<sup>th</sup> day of FEBRUARY 1951, before me a  
notary public in aforesaid county and state  
came O.L. Robson and Wilma J. Robson, his wife  
to me known to be the same persons who executed  
the foregoing instrument of writing and duly ack-  
nowledged the execution of the same as their  
voluntary act and deed. In testimony whereof  
I have hereto set my hand and affixed my  
notarial seal the day and year above written.

Melvin P. Rippe Notary Public  
My Commission Expires 2-28-51

This plat of ROBSON HEIGHTS  
2ND, Sedgwick County, Kansas, has been submitted  
to and considered by the City Planning Commission  
of Wichita, Kansas and is hereby transmitted  
to the Board of City Commissioners with the rec-  
ommendation that such plat be approved as pro-  
posed. Dated this 20<sup>th</sup> day of FEBRUARY 1951.

The City Planning Commission of Wichita, Kansas.

John W. Jew Chairman  
J. Thomas Secretary

Approved by the Board of City  
Commissioners this 27<sup>th</sup> day of FEBRUARY 1951.

Earl Duke Mayor  
Ed Jones City Clerk

Approved by the Board of County  
Commissioners this 6<sup>th</sup> day of MARCH 1951.

Otis Schweiter County Clerk

Entered on transfer record this  
6<sup>th</sup> day of MARCH 1951

Otis Schweiter County Clerk

5743

State of Kansas }  
Sedgwick County } s.s. This is to certify that this  
instrument was filed for record in the office  
of the Register of Deeds this 6<sup>th</sup> day of  
MARCH 1951, at 2:15 o'clock P.M., and is  
duly recorded.

Ed. Osterman Register of Deeds

R2 2 8

Baughman Company, P.A.  
SURVEYORS, ENGINEERS, ARCHITECTS  
1215 WEST 10TH AVENUE  
WICHITA, KANSAS 67202

ROBSON HEIGHTS 2ND ADD.  
Copy of PLAT

4  
4