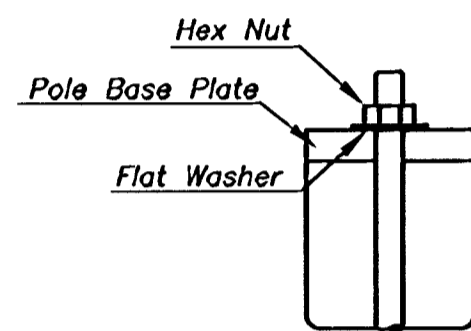
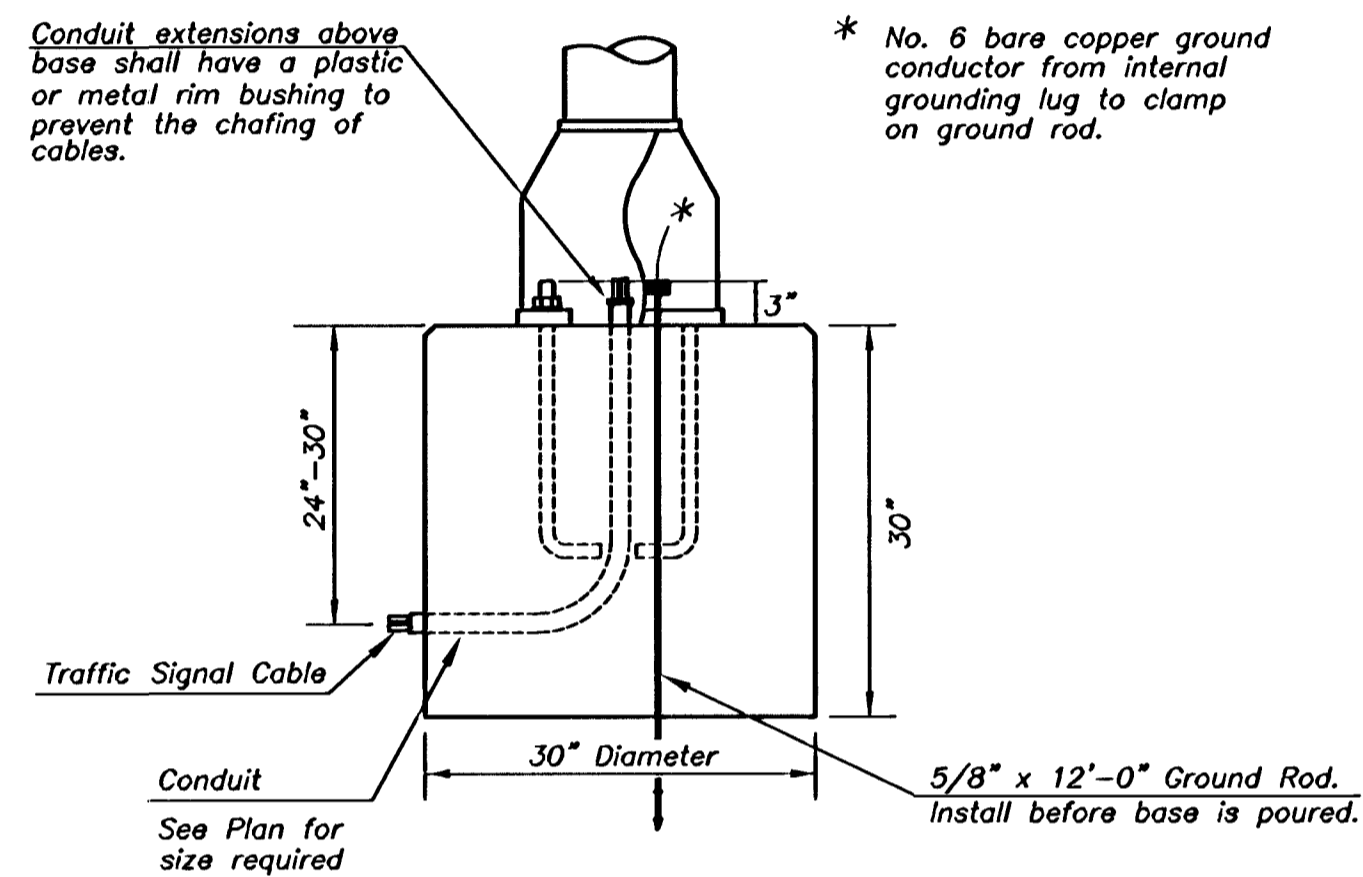
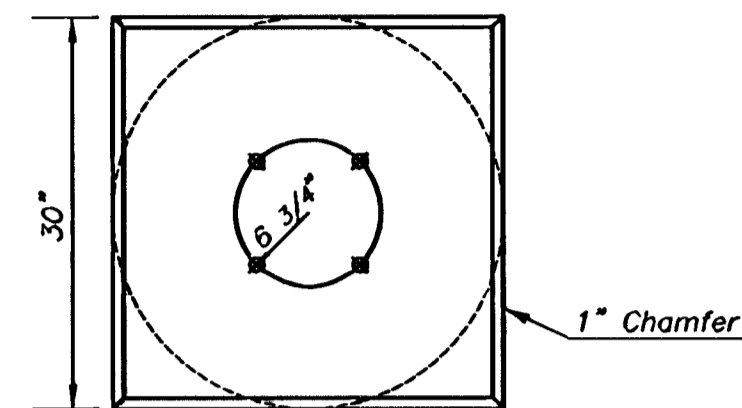


FHWA REGION NO.	STATE	PROJECT NUMBER	FISCAL YEAR	SHEET NUMBER	TOTAL SHEETS
7	KANSAS	87 N-0229-01 CMQ-N022 (901)	2004	40	62

Use Keystone "No-Weld Number 1 Anti-Seize Compound" on all bolts & nuts.

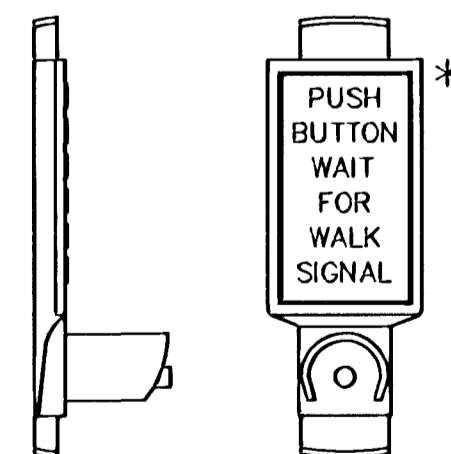


ANCHOR BOLT  
DETAIL



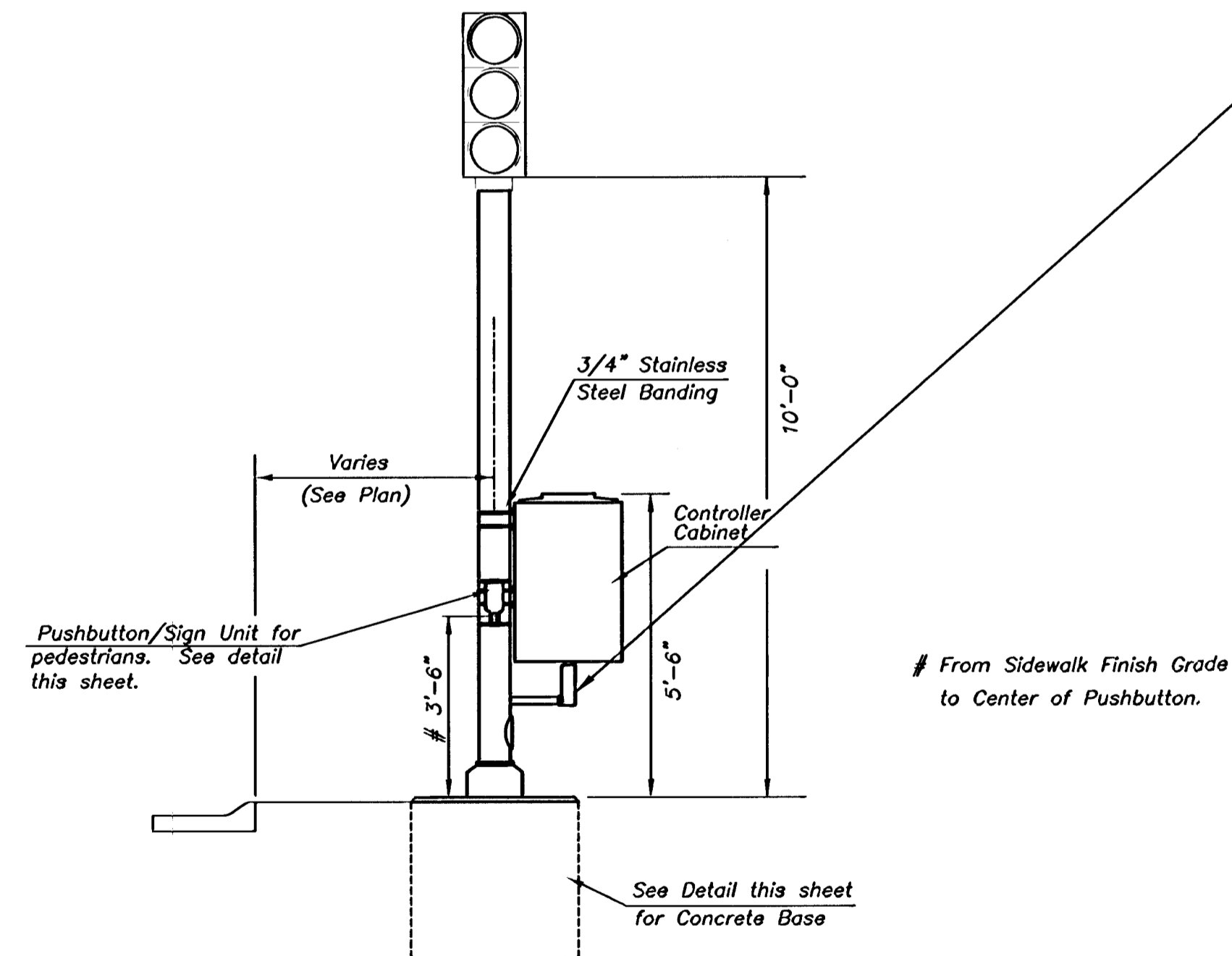
CONCRETE BASE DETAIL

\* NOTE: MESSAGE TO BE CAST WITH HOUSING (ONE PIECE)

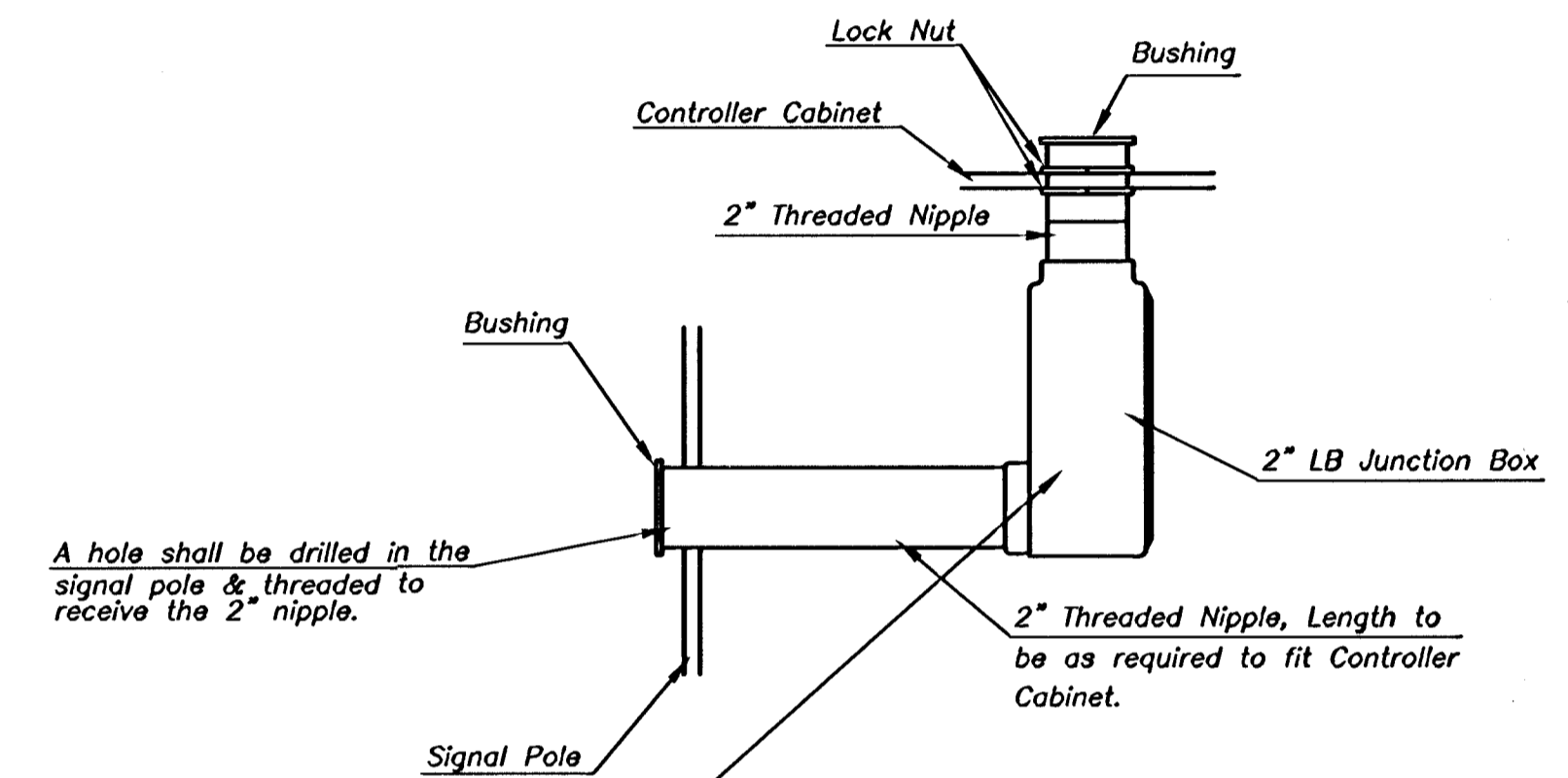


INSTALL PEDESTRIAN PUSHBUTTON UNDERNEATH CORRESPONDING PEDESTRIAN SIGNAL HEAD ON SIDE OF POLE NEAREST CROSSWALK. UNIT SHALL BE FIRMLY ATTACHED TO THE SIDE OF POLE WITH 3/4" STEEL BANDS. SHARP ENDS SHALL BE FOLDED UNDER TO PREVENT INJURY TO PEDESTRIANS.

PEDESTRIAN PUSHBUTTON/SIGN  
UNIT DETAIL



TRAFFIC SIGNAL PEDESTAL



Harry St. - I-135 to George Washington Blvd.  
Flasher Pedestal Detail  
WICHITA, KANSAS

**Ruggles & Bohm, P.A.**  
Engineering, Surveying, Land Planning

924 North Main (316) 264-8008  
Wichita, Kansas 67203 (316) 264-4621 fax  
www.rbkansas.com E-mail: info@rbkansas.com

DESIGN: MWS  
DRAWN: MWS  
REVIEW: MWS  
UTILITY: MWS  
DATE: Feb. 5, 2004

DRAWING FILE: SIGNAL\_PLAN {Pedestal Detail}  
PROJECT NUMBER: 472-83686

SHEET 40 OF 62