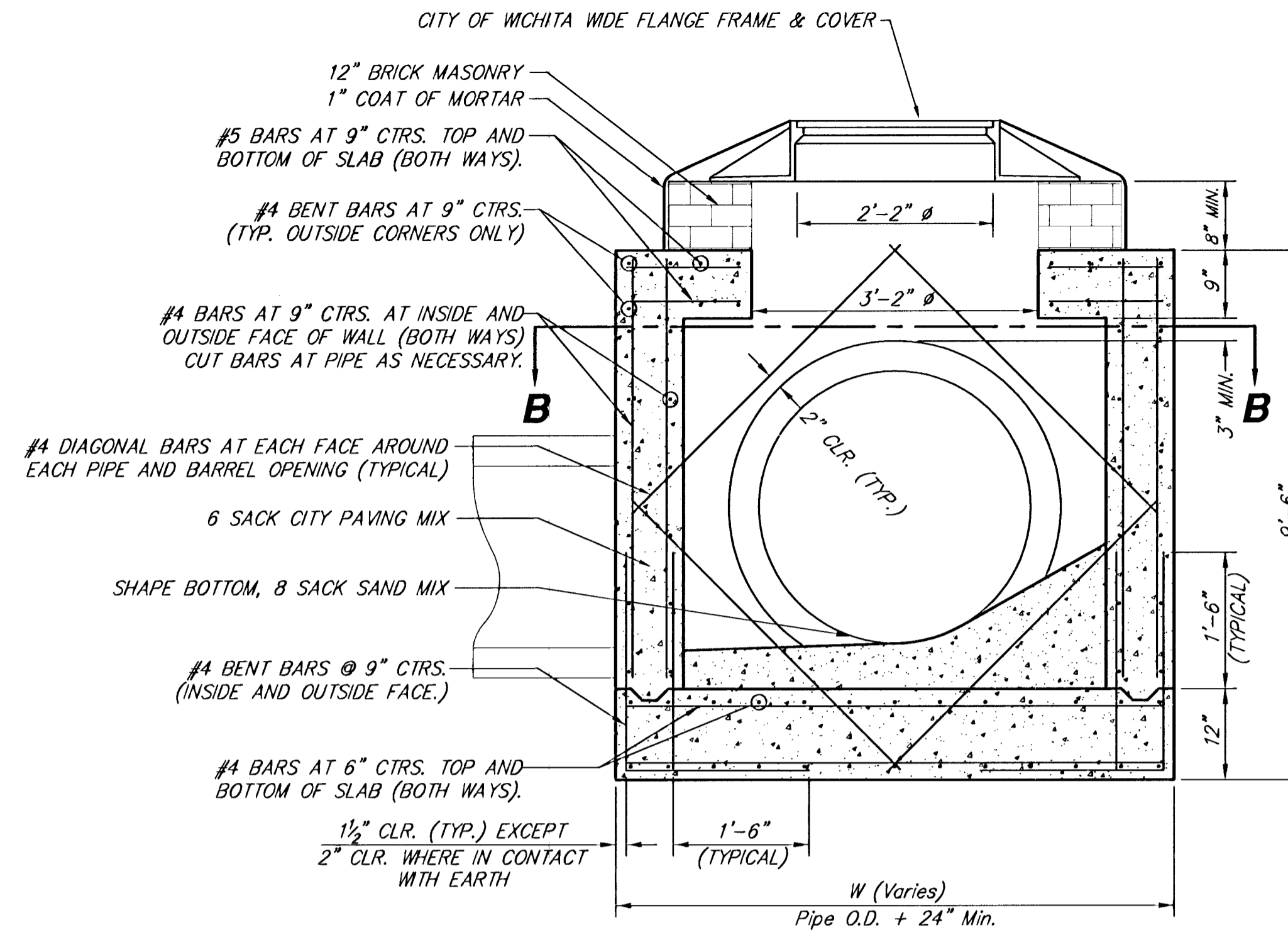
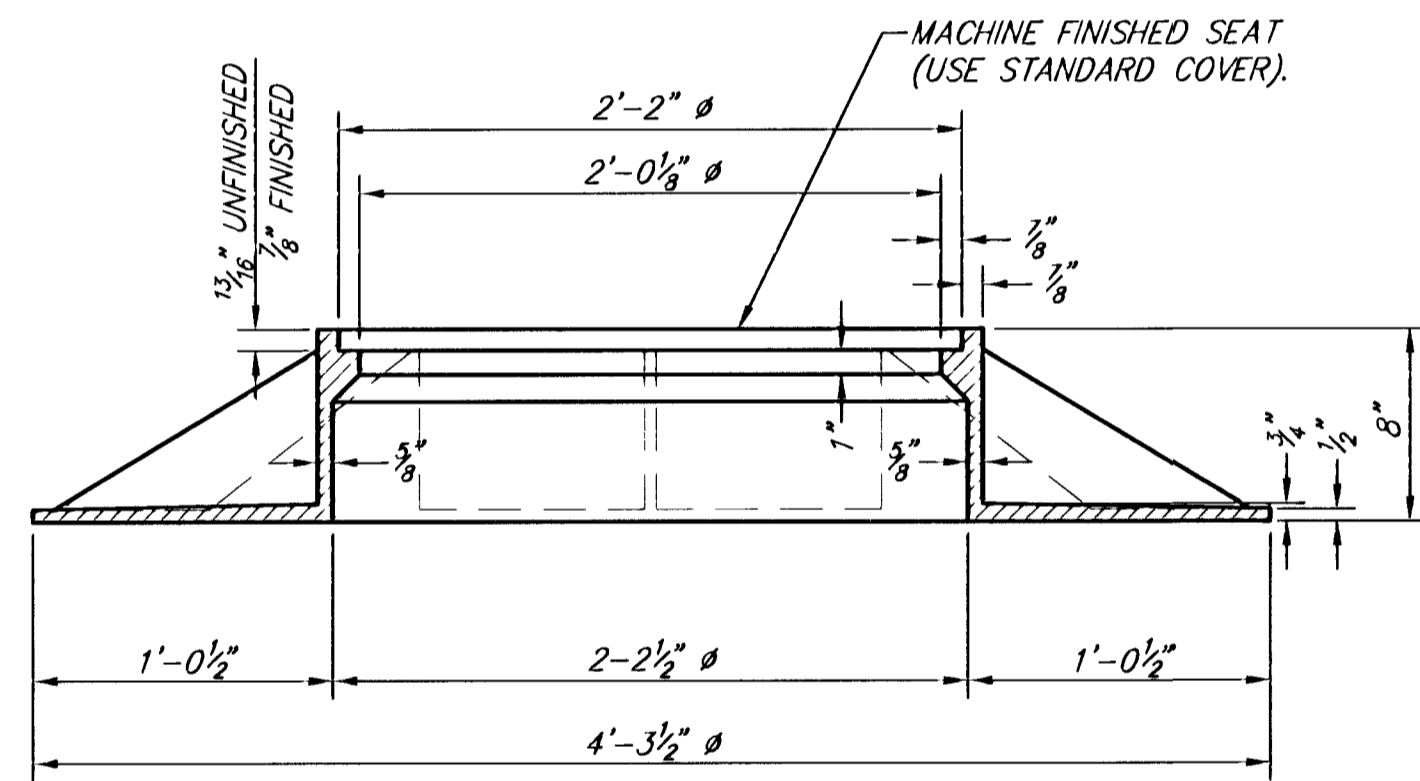


PLAN
*STANDARD MANHOLE FRAME SHOWN

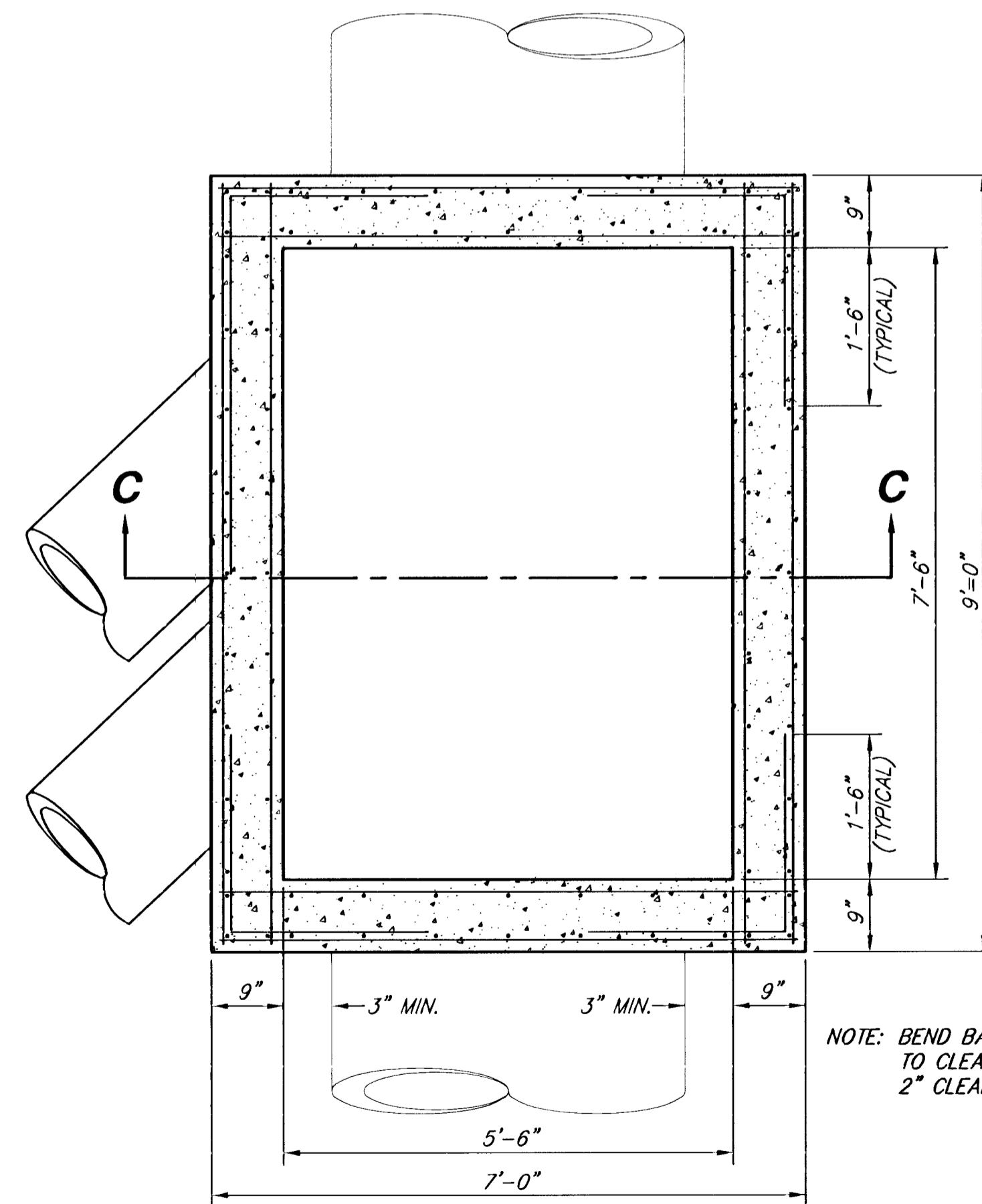


SECTION C-C



SECTION A-A
WIDE FLANGE MANHOLE FRAME
WEIGHT = 705 LBS.

CITY OF WICHITA STANDARD MANHOLE FRAME DETAILS

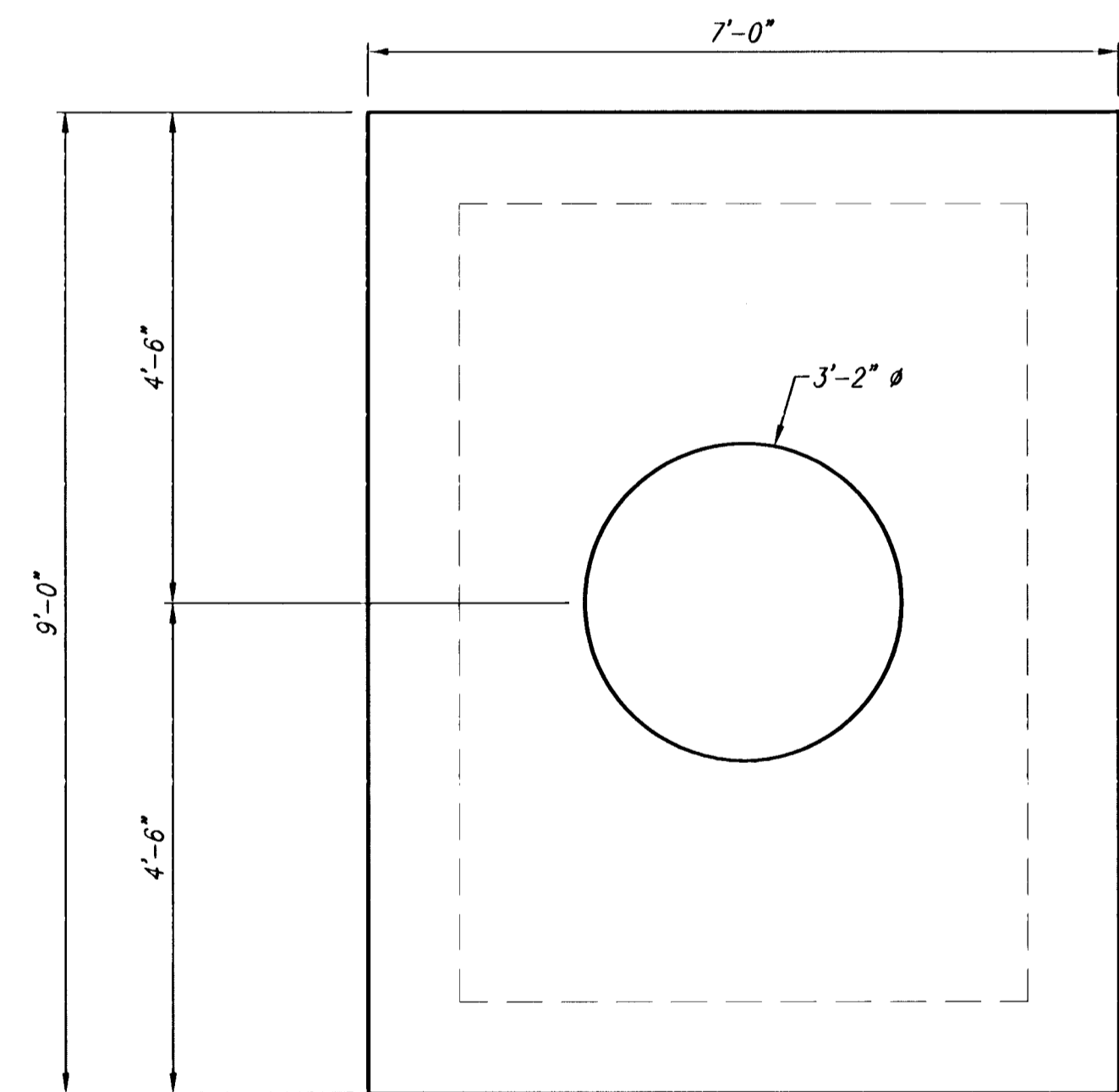


SECTION B-B

NOTE: BEND BARS NOT MORE THAN 8" TO CLEAR PIPES, OR CUT BARS 2" CLEAR OF PIPE, AS NECESSARY

GENERAL NOTES:

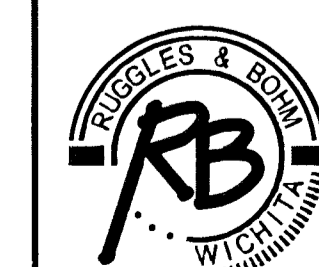
- MORTAR USED IN MASONRY CONSTRUCTION SHALL CONTAIN 8 SACKS OF CEMENT PER CUBIC YARD. CONCRETE USED IN MANHOLE WALLS AND BASES SHALL CONFORM TO THE REQUIREMENTS FOR CONCRETE PAVEMENT CONSTRUCTION AS SPECIFIED IN THE CITY STANDARD PAVING SPECIFICATIONS, USING CITY CONCRETE PAVEMENT MIX WITHOUT AIR ENTRAINING ADMIXTURE. MORTAR SHALL BE PLACED AROUND THE MANHOLE RING AS SHOWN ON THE DRAWINGS WHEN MANHOLES ARE CONSTRUCTED IN UNPAVED AREAS. COMPLETED MANHOLE SHALL BE WITHOUT LEAKS AND WATER TIGHT.
- THE FLOORS OF ALL MANHOLES SHALL BE SHAPED WITH FLOW CHANNELS SUCH THAT THE MANHOLES WILL BE SELF-CLEANING, USING 8 SACK SAND MIX CONCRETE. FLOW CHANNELS SHALL BE FORMED TO MATCH THE BOTTOM HALVES OF THE INFLOWING PIPES AND THE OUTFLOWING PIPE. MANHOLE FLOORS SHALL HAVE SLOPES OF 3 INCHES PER FOOT IN THE AREAS OUTSIDE OF THE FLOW CHANNELS, SLOPED TOWARD THE FLOW CHANNELS.
- MANHOLE COVER CASTINGS AND MANHOLE FRAME CASTINGS SHALL CONFORM TO THE REQUIREMENTS AS INDICATED IN THE STANDARD SPECIFICATIONS AND AS SHOWN IN THE STANDARD DETAIL DRAWING.
- THE ENDS OF ALL PIPES IN MANHOLES SHALL BE CUT OFF FLUSH WITH THE INSIDE FACE OF MANHOLE WALL.
- INTERIOR CONCRETE SURFACES OF MANHOLE SHALL BE COATED WITH 90 MIL MIN. EPOXY COATING (APPLIED IN 2 COATS). EPOXY MATERIAL TO BE RAVEN 405, AS MANUFACTURED BY RAVEN LINING SYSTEMS (OR APPROVED EQUAL).
- PRE-CAST CONCRETE MANHOLES MAY BE USED WITH APPROVAL OF THE ENGINEER.



TOP PLAN

REVISED

**SANITARY SEWER RECONSTRUCTION
REINFORCED CONCRETE MANHOLE DETAIL
WICHITA, KANSAS**



Ruggles & Bohm, P.A.
Engineering, Surveying, Land Planning

924 North Main
Wichita, Kansas 67203
www.rbkansas.com

(316) 264-8008
(316) 264-4621 fax
E-mail: info@rbkansas.com

DRAWING FILE: (RB)Reinforced Conc. MH
PROJECT NUMBER: 468-83460

DESIGN	TCR	SHEET 4 OF 6
DRAWN	EJB	
REVIEW		
UTILITY		
DATE	Apr. 29, 2004	