

| COORDINATE LIST | | |
|-----------------|----------------|----------------|
| POINT | NORTH | EAST |
| 6000 | 1,698,440.5305 | 1,688,453.2125 |
| 6001 | 1,698,447.8209 | 1,688,371.7308 |
| 6002 | 1,698,464.3953 | 1,688,338.1073 |
| 6003 | 1,698,499.2726 | 1,688,324.3660 |
| 6004 | 1,698,683.5974 | 1,688,323.1555 |
| 6005 | 1,698,743.7931 | 1,688,401.5654 |
| 6006 | 1,698,652.0034 | 1,688,438.2572 |
| 6007 | 1,698,558.3190 | 1,688,418.0333 |
| 6008 | 1,698,494.5404 | 1,688,441.2006 |
| 6009 | 1,698,480.6530 | 1,688,446.9229 |
| 6010 | 1,698,469.0250 | 1,688,454.0509 |
| 6011 | 1,698,451.7563 | 1,688,446.6882 |
| 6012 | 1,698,531.1964 | 1,688,369.0427 |
| 6013 | 1,698,583.5030 | 1,688,368.6992 |
| 6014 | 1,698,609.4963 | 1,688,371.0514 |
| 6015 | 1,698,738.1797 | 1,688,395.4084 |

(6000) = COORDINATE POINT NO.

SITE GRADING NOTES

1. THE CONTRACTOR SHALL STOCKPILE EXCESS EXCAVATED MATERIAL FROM THIS PROJECT AT THE LOCATION SHOWN ON THE KEYMAP.
2. ALL FILL MATERIAL SHALL BE BLADED SMOOTH AND SLOPED TO DRAIN.
3. NO WASTE MATERIAL SHALL BE PLACED IN ANY STREET RIGHT-OF-WAY OTHER THAN AS NECESSARY FOR STREET CONSTRUCTION AS SHOWN IN THESE PLANS.
4. THE CONTRACTOR SHALL STRIP MINIMUM 6" OF EXISTING TOPSOIL/ORGANIC MATERIAL PRIOR TO PAVEMENT OF FILL. WHERE EXISTING TOPSOIL/ORGANIC MATERIAL EXCEEDS 6", CONTRACTOR SHALL STRIP ADDITIONAL DEPTH AS NEEDED PRIOR TO PLACEMENT OF FILL. CONTRACTOR SHALL APPLY TOPSOIL TO ALL DISTURBED AREAS PRIOR TO SEEDING. THE TOP 6" OF MATERIAL SHALL BE SOIL WHICH IS SUITABLE FOR GROWTH OF VEGETATION.
5. ONLY APPROVED MATERIALS SHALL BE USED IN PLACEMENT OF SITE FILL. THIS MATERIAL SHALL BE FREE OF ANY ORGANIC MATTER, LARGE STONES, AND DEBRIS.
6. THE LUMP SUM BID ITEM "MASS GRADING" SHALL INCLUDE TOPSOILING STRIPPING AND PLACING, GRADING AND COMPACTING OF SOIL MATERIAL TO THE REQUIREMENTS OF THIS GRADING PLAN; AND FOR ALL EQUIPMENT, LABOR, TOOLS, AND INCIDENTALS NECESSARY TO COMPLETE THE WORK.
7. ANY DOUBLE-HANDLING AND/OR STOCKPILING OF EXCAVATED MATERIAL WHICH MAY BE REQUIRED, INCLUDING REMOVAL AND REPLACEMENT OF TOPSOIL, WILL NOT BE MEASURED OR PAID FOR SEPARATELY.
8. THE ACTUAL EXCAVATION OF MATERIAL FOR SITE GRADING IS INCLUDED IN THE BID ITEM "UNCLASSIFIED EXCAVATION".

① CONCRETE DITCH LINER SHALL BE PAID FOR AT THE UNIT PRICE BID PER SQUARE YARD FOR "CONCRETE PAVEMENT 5".

| EARTHWORK SUMMARY (C.Y.) | | | |
|---------------------------|-------------------------|----------------------|--------------|
| | Unclassified Excavation | Compacted Fill (95%) | Fill** |
| Storm Water Drain No. 273 | 3,845 | --- | 1,049 |
| TOTALS | 3,845 | --- | 1,049 |

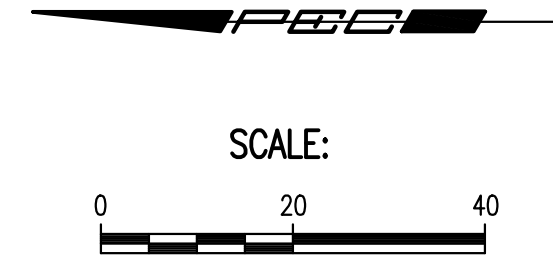
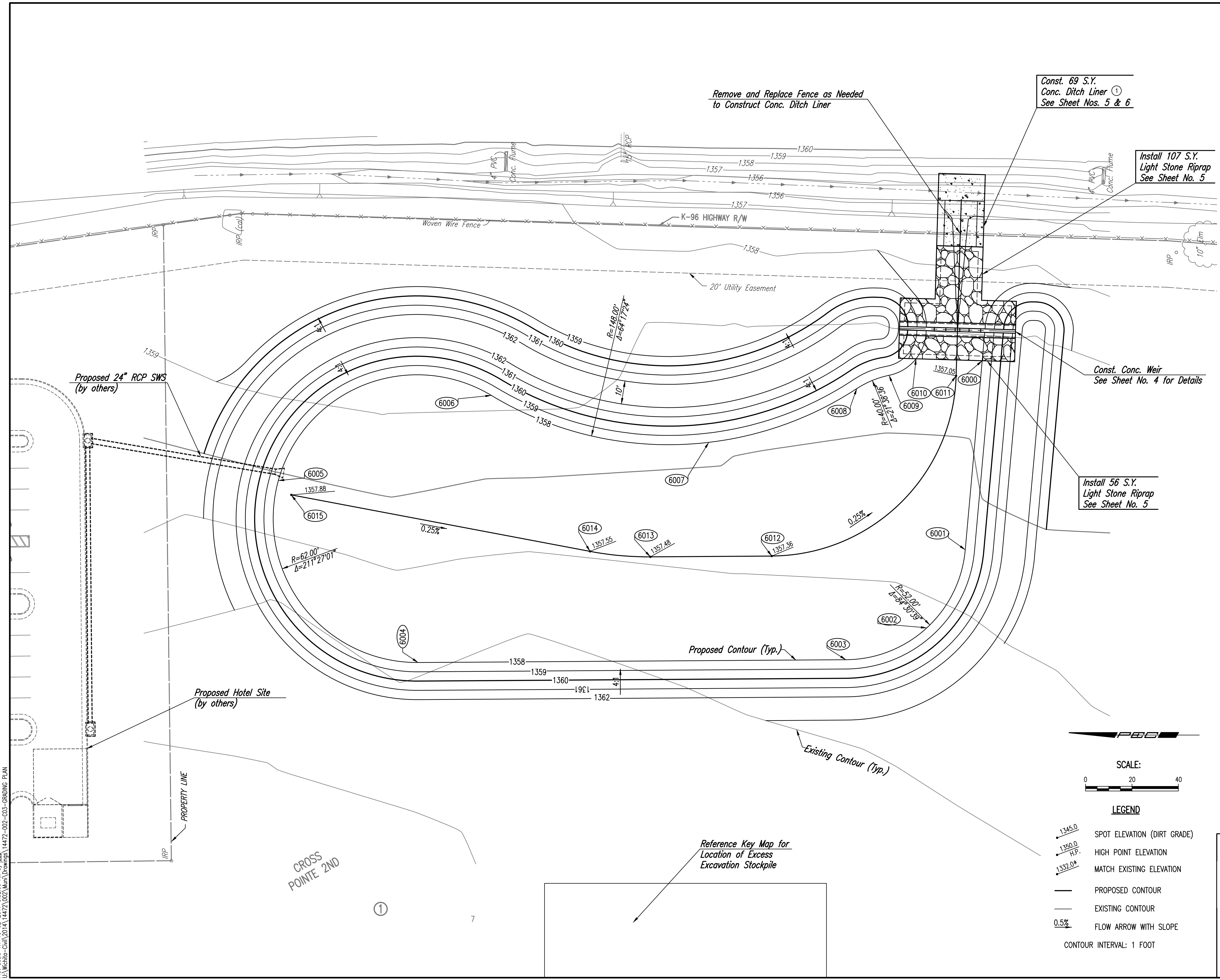
**FOR INFORMATION ONLY-NOT A PAY ITEM. NO SHRINKAGE FACTOR HAS BEEN APPLIED.

ESTIMATED EXCESS FOR STOCKPILE=
(3,845)-(1,049)/(0.85)=2,611 C.Y.
ASSUMES 15% SHRINKAGE

EXCESS MATERIAL SHALL BE STOCKPILED ON SITE AT THE LOCATION SPECIFIED IN THE PLANS, BLADED SMOOTH AND SLOPED TO DRAIN.

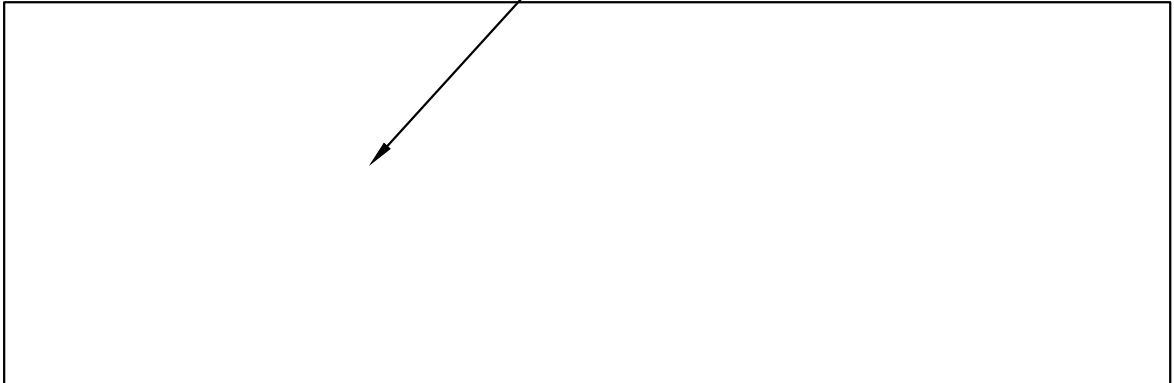
THE CONTRACTOR SHALL SATISFY THEMSELVES WITH THE EARTHWORK QUANTITIES AND NO CHANGE ORDER FOR EARTHWORK WILL BE APPROVED.

CADD FILES FOR THE SITE GRADING WILL BE MADE AVAILABLE UPON REQUEST.



- LEGEND**
- 1345.0 SPOT ELEVATION (DIRT GRADE)
 - 1350.0 H.P. HIGH POINT ELEVATION
 - 1332.0# MATCH EXISTING ELEVATION
 - PROPOSED CONTOUR
 - EXISTING CONTOUR
 - 0.5% FLOW ARROW WITH SLOPE
- CONTOUR INTERVAL: 1 FOOT

Reference Key Map for Location of Excess Excavation Stockpile



Sowed 09-27-2017 3:06:06 PM by CSI
 Plot Scale 1:1 10-02-2017 9:32:06 AM by CSI
 U:\Wichita-Civil\2014\14472\002\Mun\Drawings\14472-002-003-GRADING PLAN

CROSS
POINTE 2ND

①

7

| | | | |
|--|----------------------|--|--|
| | | No. _____ Revision _____ By _____ Date _____ | |
| CROSS POINTE 2ND STORM WATER DRAIN NO. 399 GRADING PLAN GARY JANZEN, P.E. - CITY ENGINEER CITY OF WICHITA PROJECT NO. 468-85013 | | | |
| | | | |
| PROFESSIONAL ENGINEERING CONSULTANTS, P.A. 303 SOUTH TOPEKA WICHITA, KS 67202 316-262-2691 www.pec1.com | | | |
| Designed by JAG | Job No. 35-14472-002 | Sht. 3 of 11 | |
| Drawn by BJS | Date October 2015 | | |