

GENERAL NOTES
UNIT STRESSES:
 CONCRETE: $F_c=4,000$ P.S.I., $F_y=60,000$ P.S.I.
 $F_c=1,600$ P.S.I., $F_s=24,000$ P.S.I.

CONCRETE: Concrete shall have a minimum 28 day compressive strength of 4,000 P.S.I. Bevel all exposed edges with a 3/4" triangular moulding, unless otherwise noted.

REINFORCING STEEL: All reinforcing steel shall conform to ASTM Designation A615 Grade 60 and shall be epoxy-coated. All dimensions relative to reinforcing are to centerline of bars unless otherwise noted. Bar bending and dimensions shall be as shown and noted on the bar bending diagrams. The concrete cover for all reinforcing shall be a minimum of 2" unless otherwise noted.

JOINTS: Construction joints shall only be formed at locations shown or as approved by the Engineer.

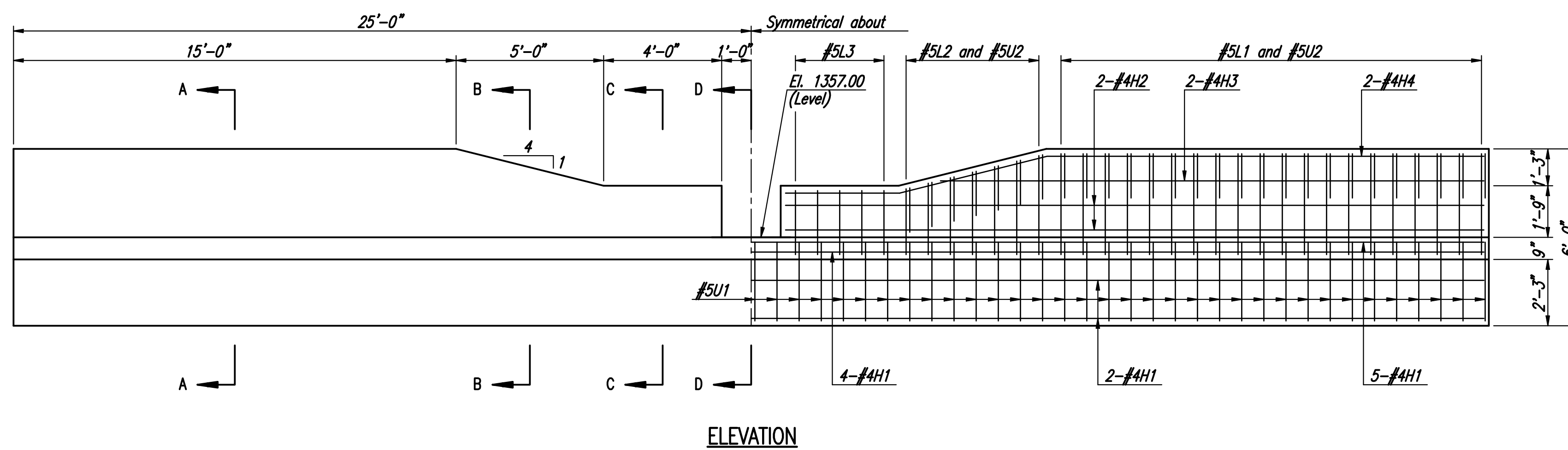
BASIS OF PAYMENT

The "R.C. Weir" shall be paid as a lump sum which shall include all labor, material, excavation, concrete, reinforcing steel and all other incidentals necessary to complete the work. Quantities shown are for information only.

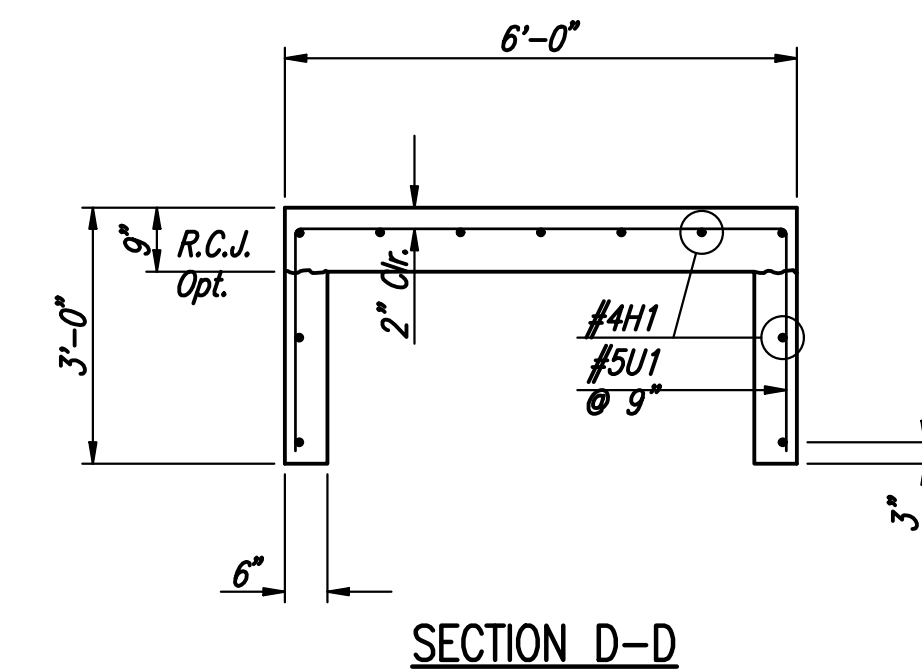
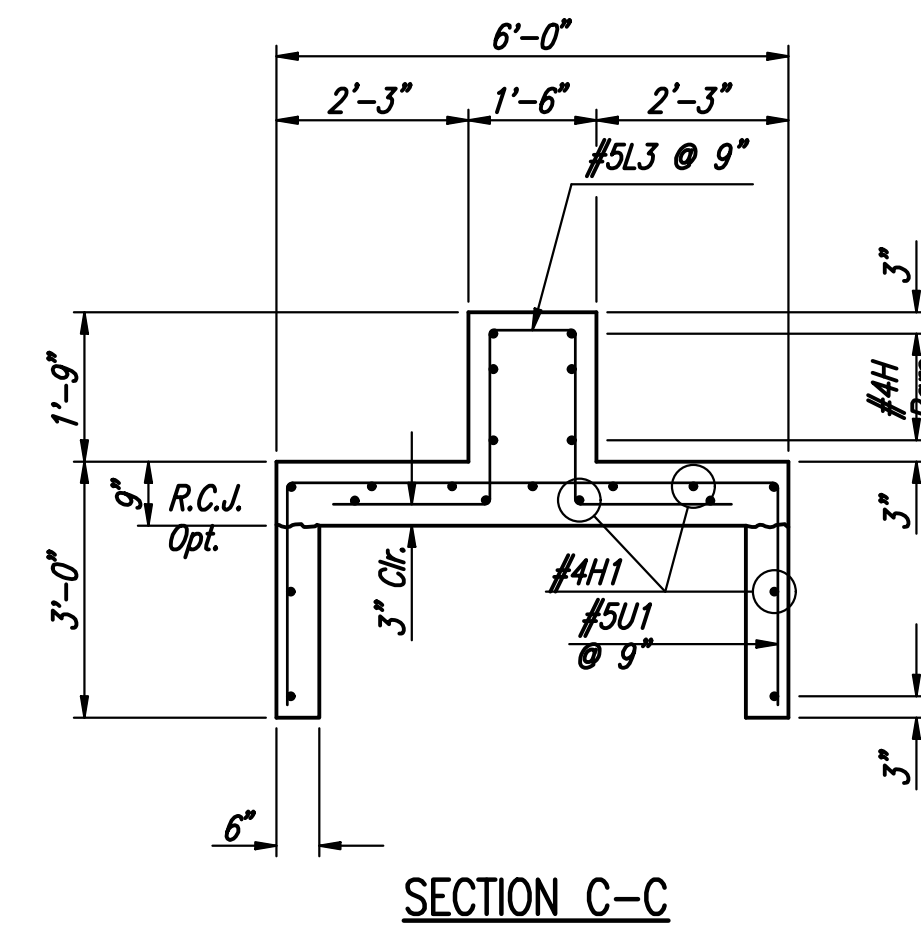
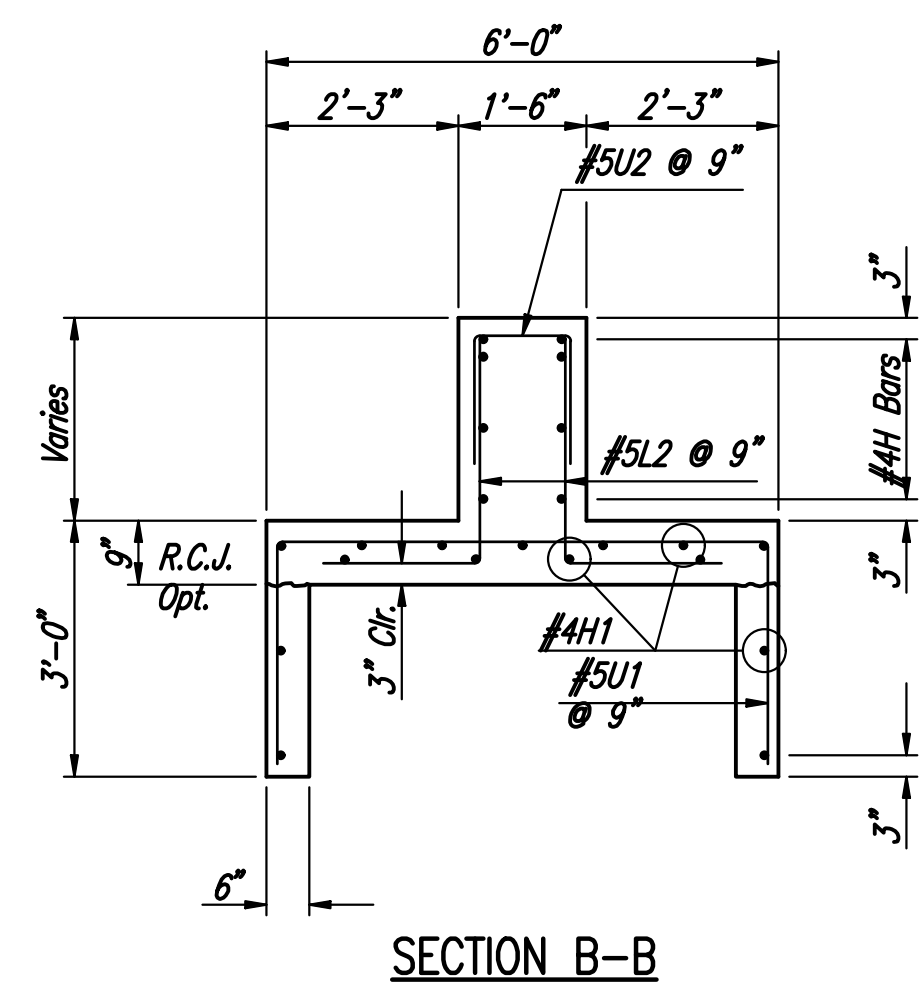
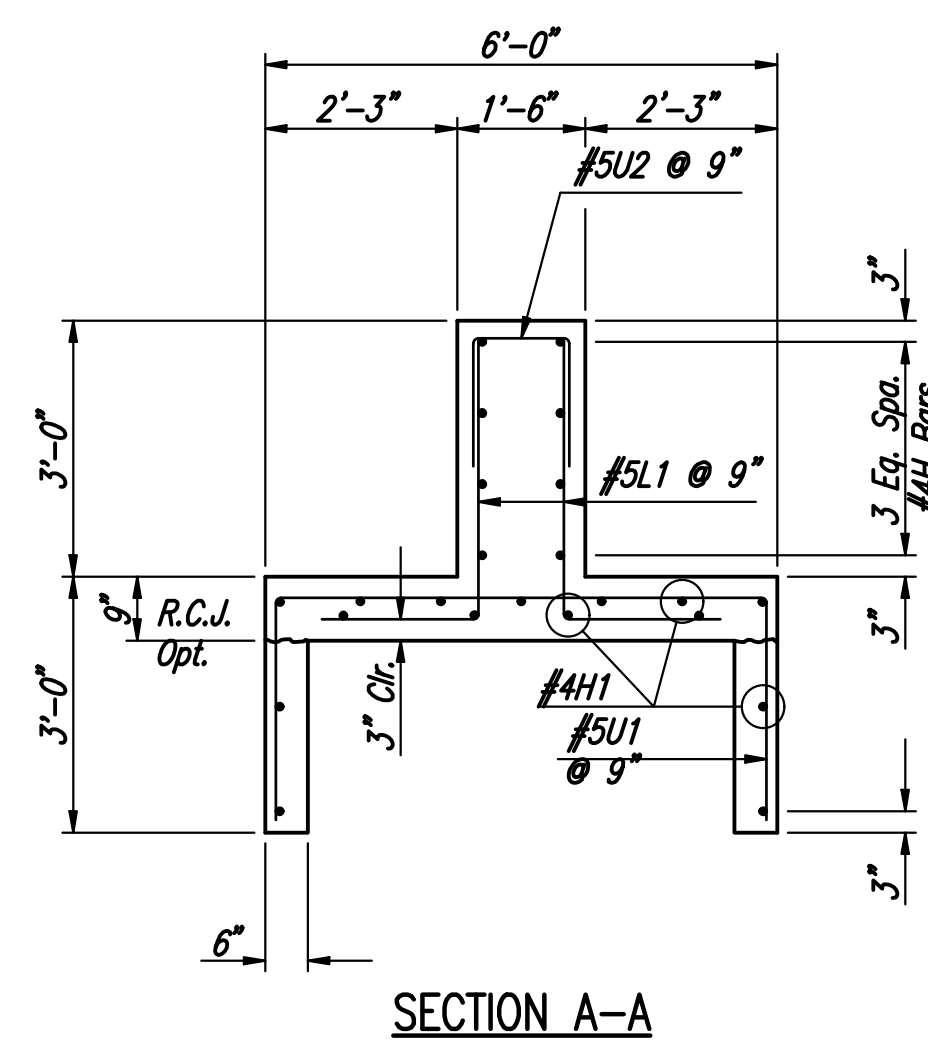
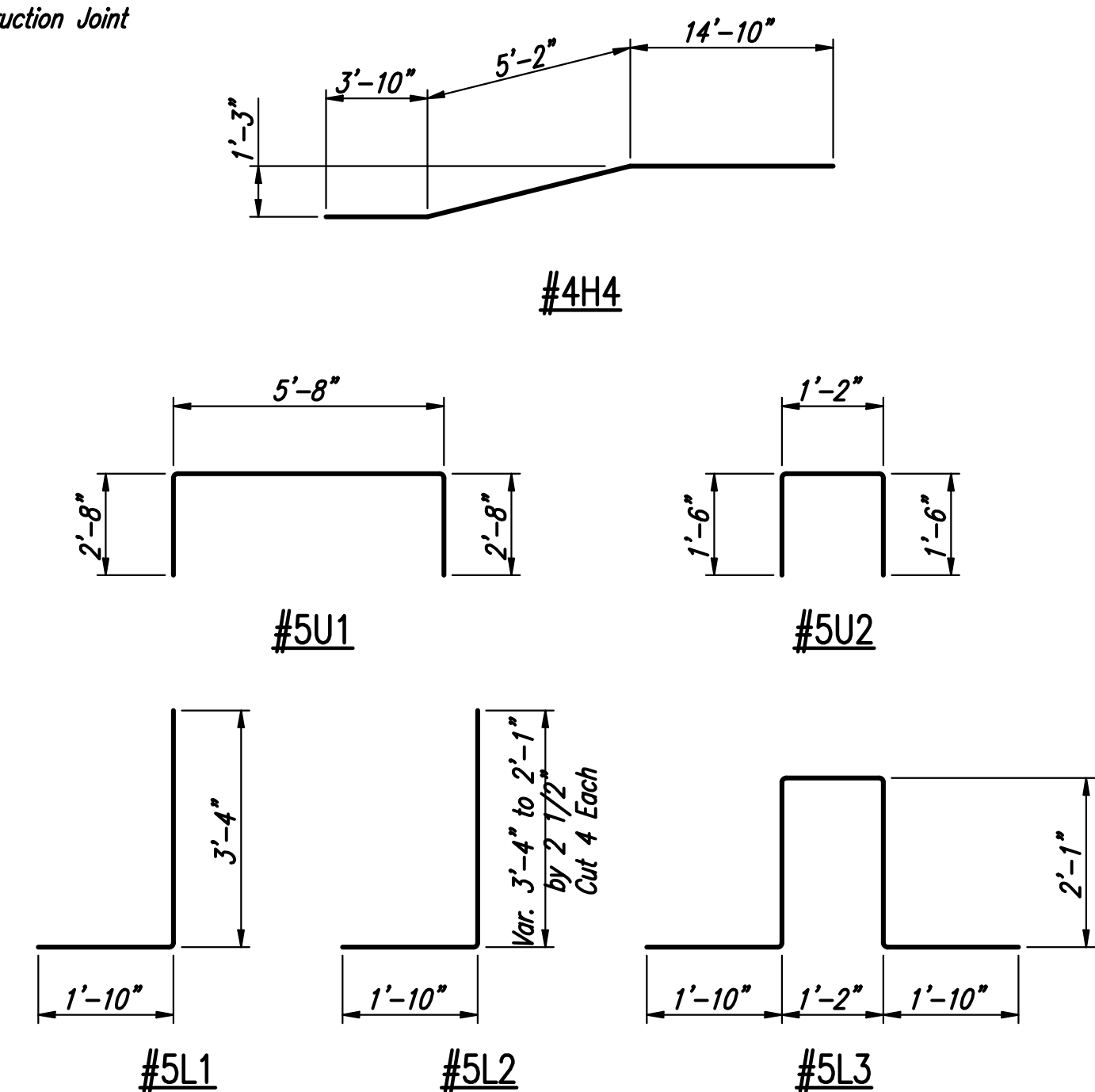
BILL OF MATERIALS					
REINFORCING STEEL					
Straight Bars			Bent Bars		
Mark	No.	Size	Length	Mark	Size
H1	30	#4	25'-6"	L1	#5
H2	8	#4	23'-8"	L2	#5
H3	4	#4	18'-5"	L3	#5
				H4	#5
				U1	#5
				U2	#5

* See Bending Diagrams

SUMMARY OF QUANTITIES		
ITEM	QUANTITY	UNIT
Concrete	19.6	C.Y.
Reinforcing Steel	2450	Lbs.



LEGEND:
 R.C.J. = Roughened Construction Joint



Sowed 09-27-2017 3:06:30 PM by CSI
 Plot Scale 1:1 10-02-2017 9:22:11 AM by CSI
 U:\Wichita-Civil\2014\14472\002\Drawings\14472-002-004-WEIR DETAILS

JOSHUA GOLKA
 LICENSED
 24136
 10/02/2017
 KANSAS
 PROFESSIONAL ENGINEER

No.	Revision	By	Date
CROSS POINTE 2ND STORM WATER DRAIN NO. 399 WEIR DETAILS GARY JANZEN, P.E. - CITY ENGINEER CITY OF WICHITA PROJECT NO. 468-85013 PROFESSIONAL ENGINEERING CONSULTANTS, P.A. 303 SOUTH TOPEKA WICHITA, KS 67202 316-262-2691 www.pec1.com			
Designed by	JAG	Job No.	35-14472-002
Drawn by	BJS	Date	October 2015

SHT. 4 of 11