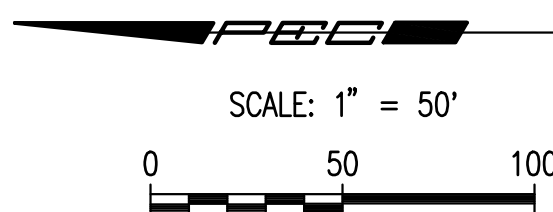
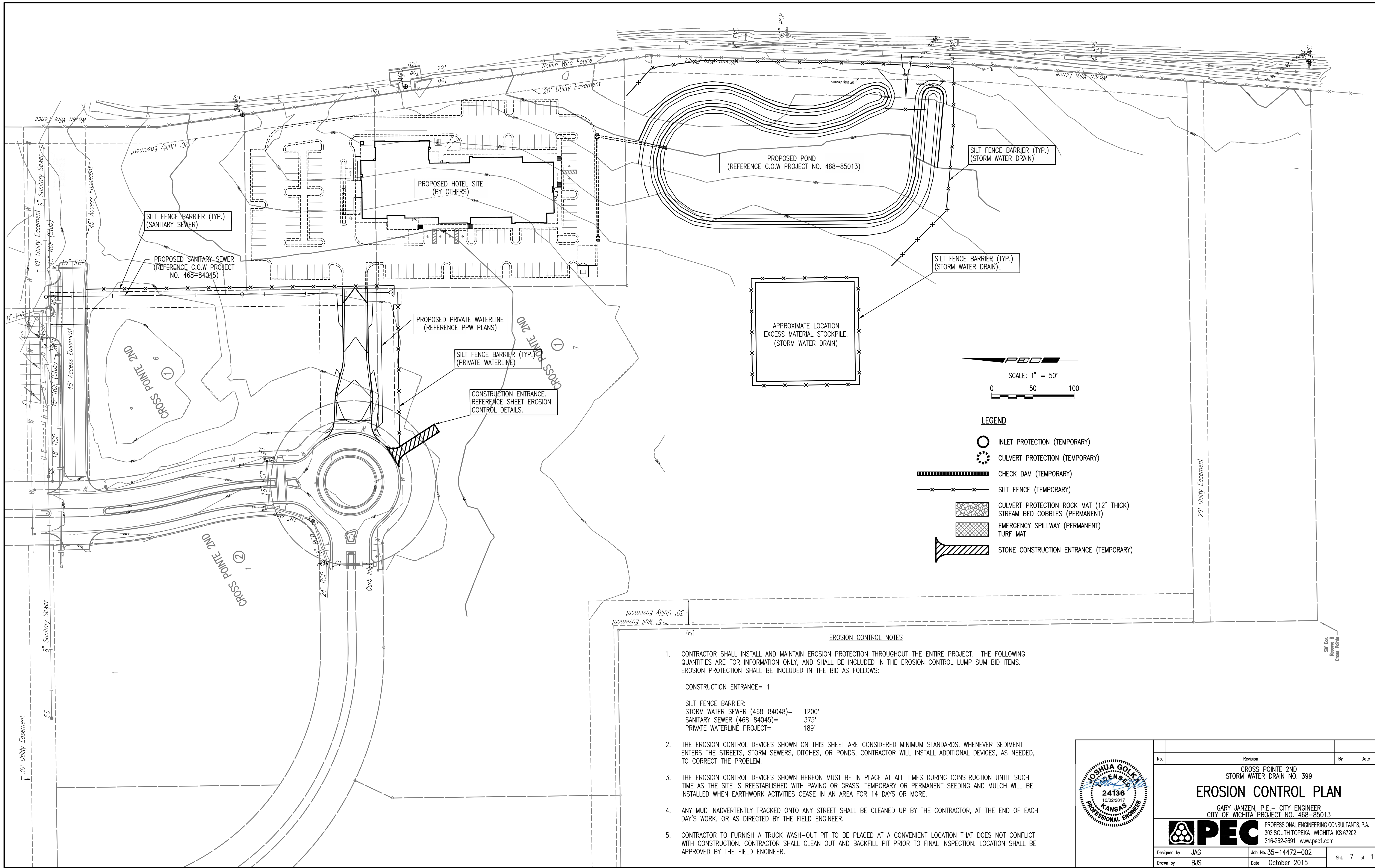


Saved 09-28-2017 9:43:20 AM by KURTIS.DEKAT  
 Plot Scale 1:1 10-02-2017 8:32:39 AM by KURTIS.DEKAT  
 U:\Wichita-Cmn\2014\14472\002\Main\Drawings\14472-002-007-EROSION CONTROL PLAN

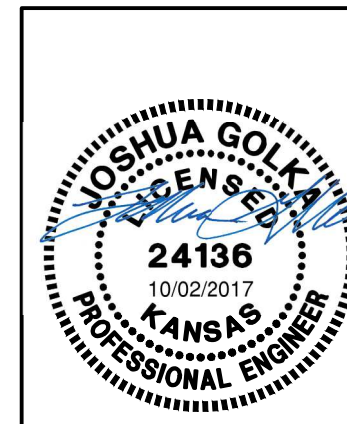


**LEGEND**

- INLET PROTECTION (TEMPORARY)
- CULVERT PROTECTION (TEMPORARY)
- CHECK DAM (TEMPORARY)
- SILT FENCE (TEMPORARY)
- CULVERT PROTECTION ROCK MAT (12" THICK)  
STREAM BED COBBLES (PERMANENT)
- EMERGENCY SPILLWAY (PERMANENT)  
TURF MAT
- STONE CONSTRUCTION ENTRANCE (TEMPORARY)

**EROSION CONTROL NOTES**

1. CONTRACTOR SHALL INSTALL AND MAINTAIN EROSION PROTECTION THROUGHOUT THE ENTIRE PROJECT. THE FOLLOWING QUANTITIES ARE FOR INFORMATION ONLY, AND SHALL BE INCLUDED IN THE EROSION CONTROL LUMP SUM BID ITEMS. EROSION PROTECTION SHALL BE INCLUDED IN THE BID AS FOLLOWS:  
  
 CONSTRUCTION ENTRANCE= 1  
  
 SILT FENCE BARRIER:  
 STORM WATER SEWER (468-84048)= 1200'  
 SANITARY SEWER (468-84045)= 375'  
 PRIVATE WATERLINE PROJECT= 189'
2. THE EROSION CONTROL DEVICES SHOWN ON THIS SHEET ARE CONSIDERED MINIMUM STANDARDS. WHENEVER SEDIMENT ENTERS THE STREETS, STORM SEWERS, DITCHES, OR PONDS, CONTRACTOR WILL INSTALL ADDITIONAL DEVICES, AS NEEDED, TO CORRECT THE PROBLEM.
3. THE EROSION CONTROL DEVICES SHOWN HEREON MUST BE IN PLACE AT ALL TIMES DURING CONSTRUCTION UNTIL SUCH TIME AS THE SITE IS REESTABLISHED WITH PAVING OR GRASS. TEMPORARY OR PERMANENT SEEDING AND MULCH WILL BE INSTALLED WHEN EARTHWORK ACTIVITIES CEASE IN AN AREA FOR 14 DAYS OR MORE.
4. ANY MUD INADVERTENTLY TRACKED ONTO ANY STREET SHALL BE CLEANED UP BY THE CONTRACTOR, AT THE END OF EACH DAY'S WORK, OR AS DIRECTED BY THE FIELD ENGINEER.
5. CONTRACTOR TO FURNISH A TRUCK WASH-OUT PIT TO BE PLACED AT A CONVENIENT LOCATION THAT DOES NOT CONFLICT WITH CONSTRUCTION. CONTRACTOR SHALL CLEAN OUT AND BACKFILL PIT PRIOR TO FINAL INSPECTION. LOCATION SHALL BE APPROVED BY THE FIELD ENGINEER.



No.	Revision	By	Date
	CROSS POINTE 2ND STORM WATER DRAIN NO. 399		
<b>EROSION CONTROL PLAN</b>			
GARY JANZEN, P.E. - CITY ENGINEER CITY OF WICHITA PROJECT NO. 468-85013			
<b>PEC</b> PROFESSIONAL ENGINEERING CONSULTANTS, P.A. 303 SOUTH TOPEKA WICHITA, KS 67202 316-262-2691 www.pec1.com			
Designed by	JAG	Job No. 35-14472-002	Sht. 7 of 11
Drawn by	BJS	Date October 2015	