

| FHWA REGION NO. | STATE | PROJECT NUMBER | FISCAL YEAR | SHEET NUMBER | TOTAL SHEETS |
|-----------------|--------|----------------|-------------|--------------|--------------|
| 7 | KANSAS | 87N-0080-01 | 1997 | 25 | 162 |

| DATE | BY | REFERENCES NOTED | REFERENCES CHECKED |
|------|----|------------------|--------------------|
| | | | |

STATION 1+391.500, 2 744 LT., CONSTRUCT MANHOLE (TYPE P) (1.525 m DIA.). INSTALL 900 mm x 18.496 m STORM SEWER (RCP) (N.). SEE SHEETS 26, 66

STATION 1+391.500 LT., CONSTRUCT INLET (TYPE II) (CURB). INSTALL 375 mm x 1.944 m STORM SEWER (RCP) (E.). SEE SHEETS 34, 61

STATION 0+477.051 (NEWELL), BEGIN REGRADE AND RESURFACE (SA-X)

STATION 0+488.197, 2 828 RT. (NEWELL), CONSTRUCT MANHOLE (TYPE P) (1.525 m DIA.) OVER EXISTING 600 mm RCP. SEE SHEETS 39, 61

STATION 1+460.216, END STANDARD PAVEMENT SECTION. SAW EXISTING PAVEMENT TO NEAT LINE AND MATCH WITH NEW OVERLAY SURFACE.

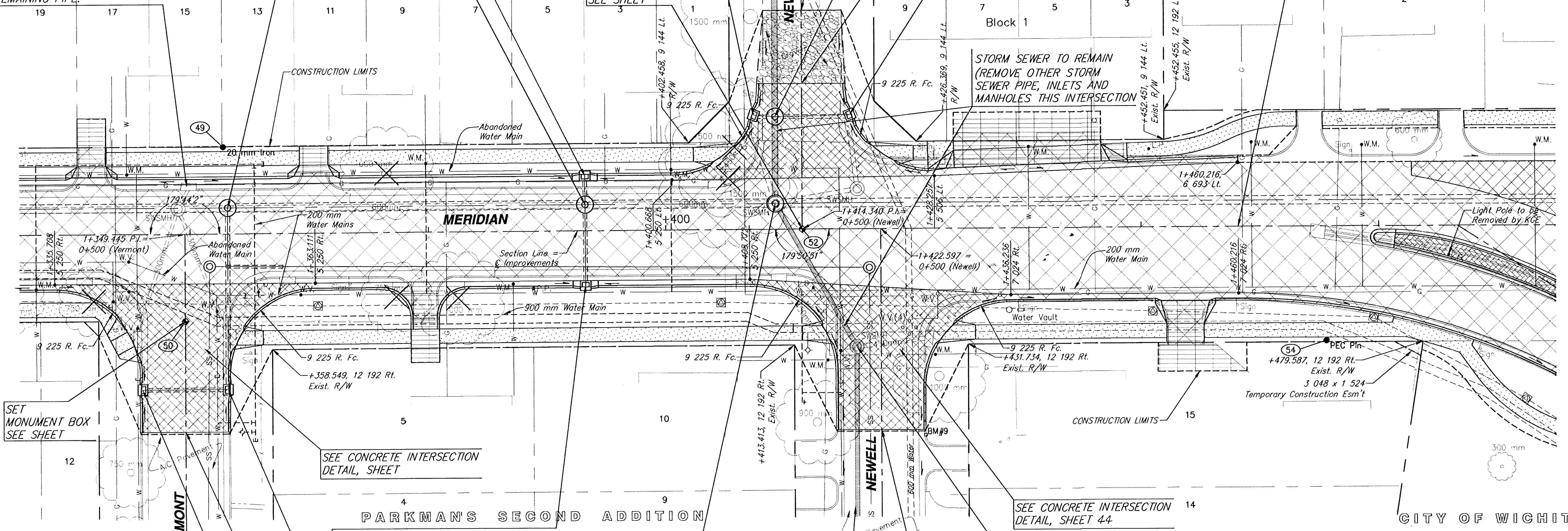
STATION 1+353.949, 2 744 LT., CONSTRUCT MANHOLE (TYPE P) (1.525 m DIA.). INSTALL 450 mm x 17.978 m STORM SEWER (RCP) (E.). INSTALL 900 mm x 36.026 m STORM SEWER (RCP) (N.). SEE SHEETS 26, 37, 66

STATION 0+488.031 RT. (NEWELL), CONSTRUCT INLET (TYPE II) (CURB). INSTALL 375 mm x 1.224 m STORM SEWER (RCP) (N.). SEE SHEETS 39, 61

STATION 0+484.723 (NEWELL), BEGIN PAVEMENT

STATION 0+488.014 LT. (NEWELL), CONSTRUCT INLET (TYPE II) (CURB). INSTALL 375 mm x 6.838 m STORM SEWER (RCP) (S.). SEE SHEETS 39, 61

REMOVE (5) CURB INLETS AND (1) MANHOLE THIS INTERSECTION. REMOVE 600 mm STORM SEWER (N.). ABANDON REMAINING PIPE.



STATION 0+516.338 RT. (VERMONT), CONSTRUCT INLET (TYPE II) (CURB). SEE SHEETS 38, 61

STATION 1+391.500 LT., CONSTRUCT INLET (TYPE II) (CURB). INSTALL 375 mm x 1.944 m STORM SEWER (RCP) (W.). SEE SHEETS 34, 61

STATION 1+411.521, 2 698 LT., REMOVE EXIST. MANHOLE. CONSTRUCT MANHOLE OVER EXISTING PIPES W. AND NE (TYPE P) (1.525 m DIA.). INSTALL 900 mm x 91.964 m STORM SEWER (RCP) (N.). SEE SHEETS 26, 66

STATION 0+516.340 LT. (VERMONT), CONSTRUCT INLET (TYPE II) (CURB). INSTALL 375 mm x 8.373 m STORM SEWER (RCP) (S.). SEE SHEETS 38, 61

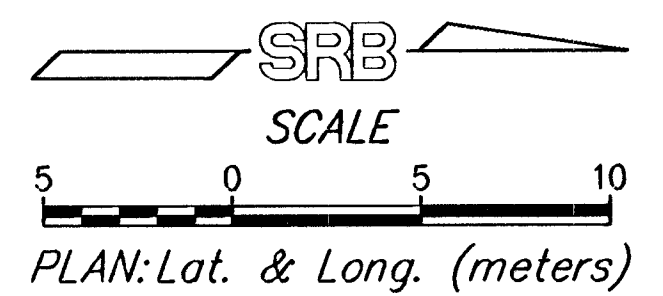
STATION 0+520.804 (VERMONT), SAW EXISTING PAVEMENT TO NEAT LINE AND MATCH. REMOVE AND REPLACE BITUMINOUS SURFACE AS NECESSARY (50 mm) (BM-2)

EXISTING STORM SEWER PIPE TO REMAIN. ALL OTHER EXISTING PIPE TO BE ABANDONED IN PLACE

BM #9 "□" CUT IN TOP OF CURB OF WEST RETURN OF FIRST DRIVE EAST OF MERIDIAN ON NORTH SIDE OF NEWELL. ELEV. 397.233

ADJUST STORM SEWER MANHOLE TO ELEV. 397.150

STATION 0+521.111 (NEWELL), SAW EXISTING PAVEMENT TO NEAT LINE AND MATCH. REMOVE AND REPLACE BITUMINOUS SURFACE AS NECESSARY (50 mm) (BM-2)



SRB
 924 NORTH MAIN WICHITA, KANSAS 67203 316-284-8008
 FAX 316-284-1821
 http://www.srb.com/ E-Mail: srb@telnet.com

SAVOY, RUGGLES & BOHM, P.A.
 ENGINEERING & SURVEYING

PROJECT NUMBER
 472-76-245-82740-000-001

DATE: Jan. 9, 1999
 DRAWN: J. Long/TEB
 DESIGN: T.C.R.
 CHECKED: VCA
 UTILITY: 539T

25
 162