

PLAN VIEW
(No Scale)

- The Price Bid for Furnishing and Installing the Lift Station, including the Wet Well, Valve Vault, and Other Miscellaneous Appurtenances, shall include all costs for furnishing and installing the Lift Station as indicated in the Plans Complete in Place and in Operation. This Price shall include the cost of constructing and/or installing compacted subgrade, concrete pavement, electrical conduit, electrical wiring, disconnect switch, pump controls, electrical power supply, finished grading, concrete slump block wall, and any other incidentals necessary to complete the work and place the lift station into satisfactory operation. The Price Bid shall include all sanitary sewer pipe and force main extended outside the slab as shown in the site plan and details.
- All Force Main Piping shall be ductile iron (flanged) to 5' outside the structures, unless otherwise noted. All interior piping shall be cement lined and epoxy coated ductile iron pipe.
- Pipe penetrations thru the wet well, valve vault, and concrete pad shall be grouted watertight with non-shrink grout and water stop gaskets as required.
- The contractor shall perform an exfiltration test on the complete wet well. The wet well shall be tested individually by securely plugging all inlet and outlet pipes. The wet well shall be filled to its full depth and then observed for at least six (6) hours. Exfiltration loss from the 6-foot diameter wet well shall not exceed the rate of 1.70 gallons per foot of wet well depth per day. If exfiltration exceeds the maximum limits, the contractor shall repair the leaks and defects, and then retest.
- The contractor shall support all piping inside the wet well and valve vault as required.
- All hardware inside the wet well and valve vault, including but not limited to the guide bar, hoist chain, chain catch, etc. shall be stainless steel. 316 stainless steel shall be used when available, otherwise 304 stainless steel is acceptable. Nylon rope will not be allowed in the wet well.
- Wet well and valve vault design shall be subject to the same design requirements as precast manholes.
- The interior of the wet well shall be lined Zebon 386.
- Backfill around the wet well and under the valve vault and pad shall be a low volume change material compacted to 95% ASTM D-1557.
- The contractor shall coordinate with Westar Energy and Kansas Gas Service to extend electric and gas services to the pump station site. The contractor shall verify the electrical and gas service costs & requirements PRIOR to bidding. ALL COST INCURRED TO EXTEND THESE SERVICES TO THE SITE SHALL BE INCLUDED IN LUMP SUM BID ITEM "PUMP STATION MODULE."
- The contractor shall verify all requirements and dimensions of the generator pad with the generator supplier prior to construction.
- No electrical connections will be allowed within the wet well.
- Contact David Harper with the City of Wichita Sewer Treatment Plant at 303-8778 PRIOR to lift station start-up.
- Contractor shall install 4 Fall Prevention Anchors at locations as shown outside of hatch on above drawing. Anchors shall be 3M/Sala Model 2100169 Pour-in-Place Detent Anchor w/ Socket or approved equal.

SEE REVISED SHEET

PLUG VALVE SCHEDULE

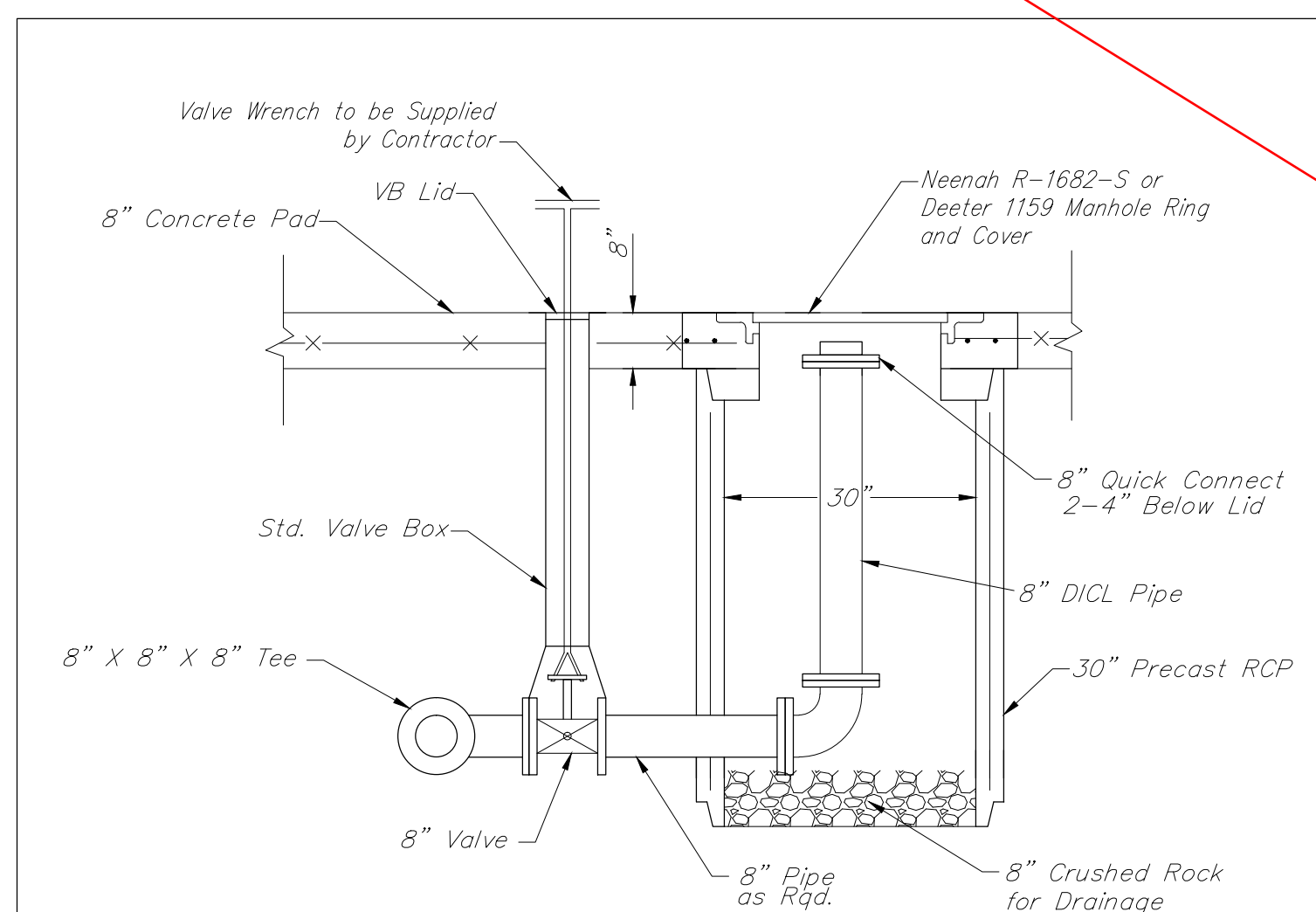
MARK	LOCATION	STATUS	SIZE	FITTINGS	OPERATOR
PV-1	VALVE VAULT	NEW	4"	FLANGE	GEARED OPERATOR W/ EXTENSION & 2" NUT
PV-2	VALVE VAULT	NEW	4"	FLANGE	GEARED OPERATOR W/ EXTENSION & 2" NUT

CHECK VALVE SCHEDULE

MARK	LOCATION	STATUS	SIZE	FITTINGS	OPERATOR
CV-1	VALVE VAULT	NEW	4"	FLANGE	LEVER & SPRING
CV-2	VALVE VAULT	NEW	4"	FLANGE	LEVER & SPRING

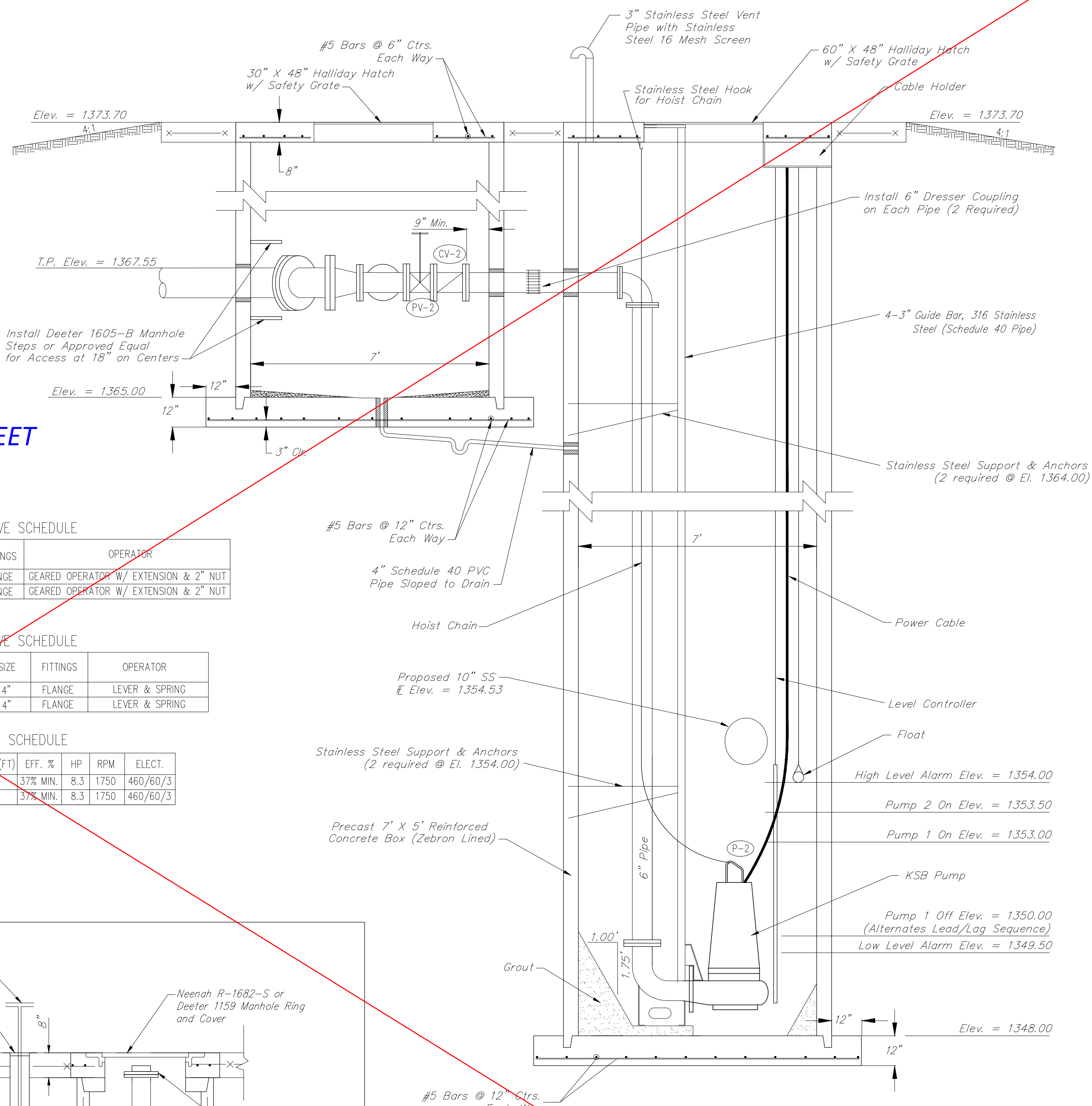
PUMP SCHEDULE

MARK	TYPE	GPM	HEAD (FT)	EFF. %	HP	RPM	ELECT.
P-1	SUBMERSIBLE	226	53.9	57% MIN.	8.3	1750	460/60/3
P-2	SUBMERSIBLE	226	53.9	57% MIN.	8.3	1750	460/60/3



EMERGENCY PUMPING CONNECTION

Contractor to contact David Harper with the Wichita Sewer Treatment Plant at 303-8778 to coordinate type of Quick Connect to be used.



SECTION A-A
(No Scale)



Baughman		Rocky Ford Addition MISC DETAILS Sanitary Sewer Force Main	
Baughman Company, P.A. 145 Ellis St. Wichita, KS 67211 P 316-262-7271 F 316-262-0149 ENGINEERING SURVEYING PLANNING LANDSCAPE ARCHITECTURE			
PROJECT NUMBER 468-84465	DESIGN DMV	DRAWN DIL	APPROVED DATE 7/17
REVISIONS:	SCALE Noted		
			11 OF 26