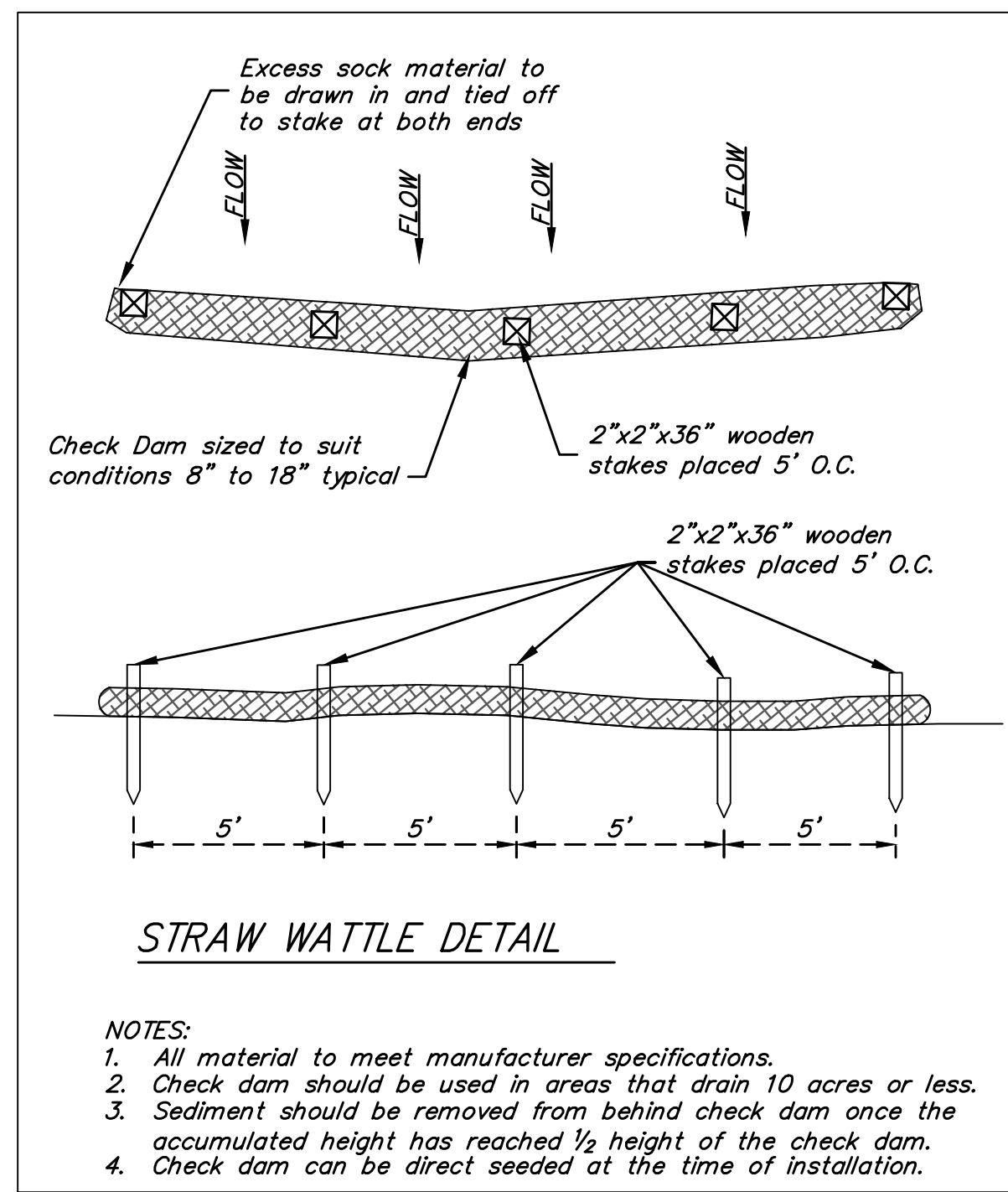
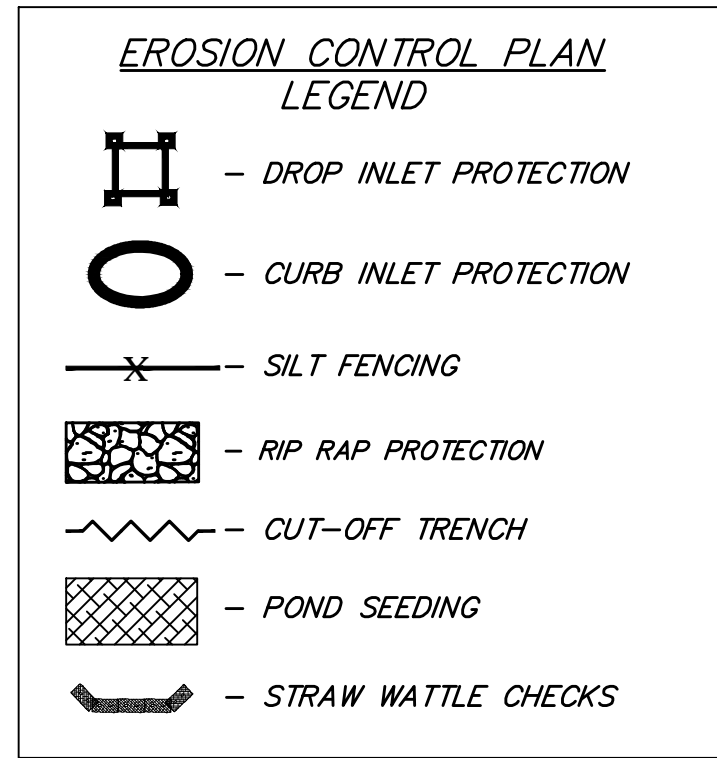


**BENCHMARKS:**  
**BM #1:** City of Wichita Benchmark Disk at South End of Hubguard on the SW Cor. of R.C.B.C., West Side of Rock Road, 706' North-Northwest Corner of Lot 44, Block A, Rocky Ford Addition Elevation = 1368.14 NAVD88

**BM #2:** "□" on Fence Footing under Warning US Airforce Installation Sign West of Rock Road, 400' N of W 1/2 Cor. Elevation = 1377.45 NAVD88

**BM #3:** "□" on Northeast Cor. Headwall RCP, East of Rock Road and South of Arnold Blvd. Elevation = 1376.10 NAVD88

**BM #4:** "□" on Top of Curb by Fire Hydrant, South of Concrete Drive at 2800 S. Rock Road Elevation = 1379.84 NAVD88

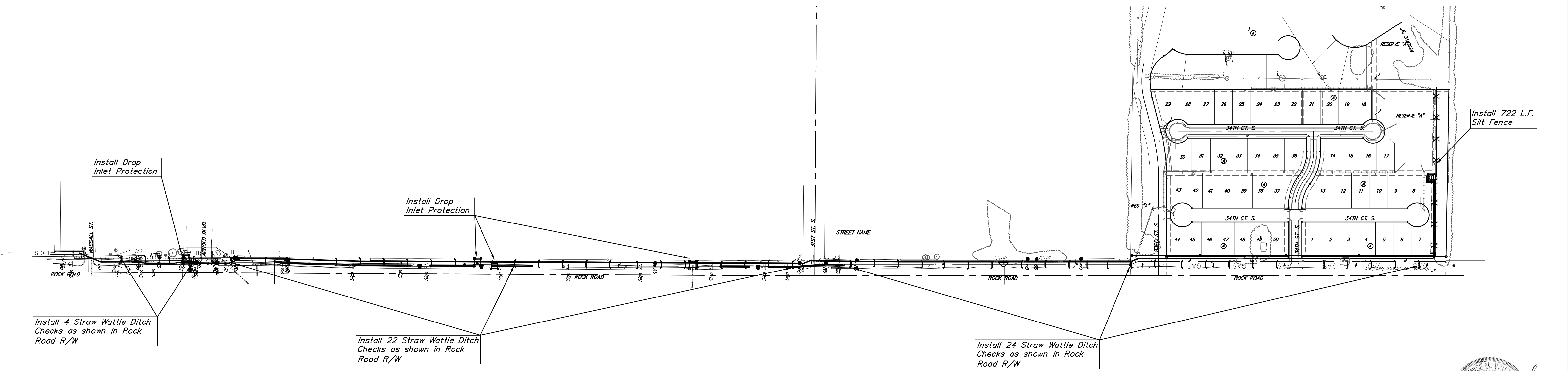
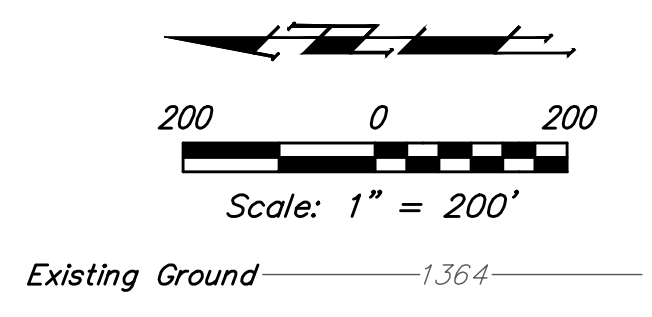



EROSION CONTROL MEASURE	INSTALL
CONSTRUCTION ENTRANCE (EA)	1
SILT FENCE (LF)	722
DROP INLET PROTECTION (EA)	4
STRAW WATTLE DITCH CHECK (EA)	50

\* ALL EXISTING BMPs INCLUDING CONSTRUCTION ENTRANCE, SEDIMENT BARRIERS, SILT FENCE, CUT-OFF TRENCH, AND EROSION CONTROL MAT SHALL BE MAINTAINED AND REPAIRED IF NECESSARY.

**NOTES:**

- Contractor shall make sure all erosion control is in place before project is accepted. This plan represents the minimum standard. Any additional erosion control measures shall be installed by the Contractor as needed.
- All areas disturbed during construction shall be seeded, mulched, and fertilized as per Cover Sheet General Notes.



	Rocky Ford Addition	
	<b>EROSION CONTROL</b> Sanitary Sewer Improvements	
Baughman Company, P.A. 315 Ellis St. Wichita, KS 67211 P 316-262-7271 F 316-262-0149 ENGINEERING   SURVEYING   PLANNING   LANDSCAPE ARCHITECTURE		
PROJECT NUMBER	DESIGN DMV	DRAWN DHL
REVISIONS:	APPROVED	DATE 10/29/17
	SCALE Noted	SHEET
	<b>16 OF 26</b>	