


BENCHMARKS:
BM #1: City of Wichita Benchmark Disk at South End of Hubguard on the SW Cor. of R.C.B.C., West Side of Rock Road, 706' North-Northwest Corner of Lot 44, Block A, Rocky Ford Addition Elev. = 1368.14 NAVD88

BM #2: "□" on Fence Footing under Warning US Airforce Installation Sign West of Rock Road, 400' N of W₁ Cor. Elev. = 1377.45 NAVD88

BM #3: "□" on Northeast Cor. Headwall RCP, East of Rock Road and South of Arnold Blvd. Elev. = 1376.10 NAVD88

BM #4: "□" on Top of Curb by Fire Hydrant. South of Concrete Drive at 2800 S. Rock Road Elev. = 1379.84 NAVD88

 = Area To Be Graded

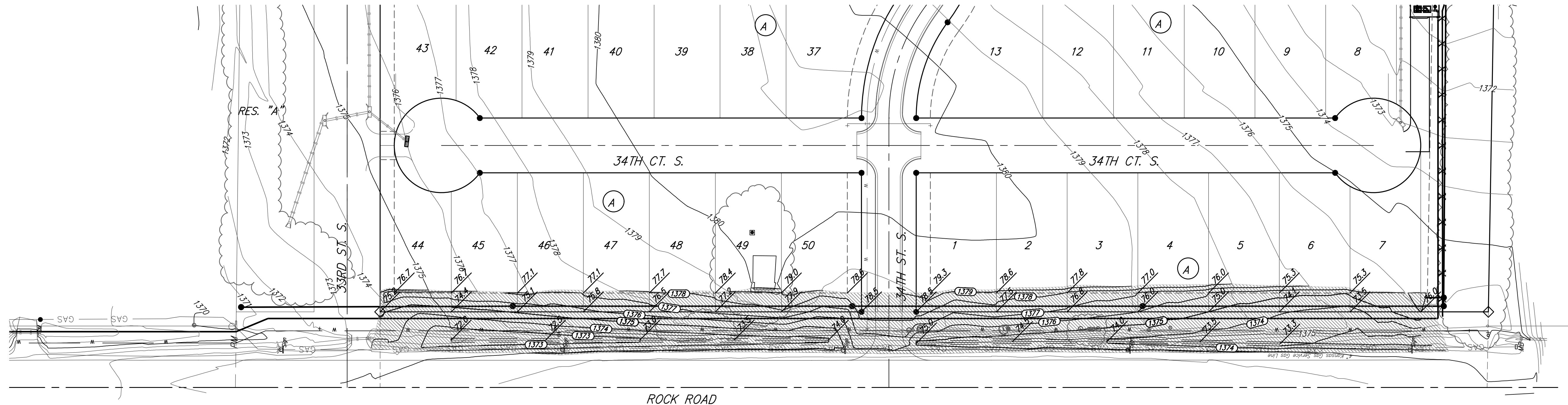
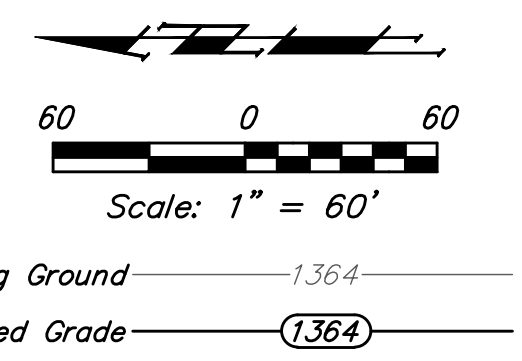
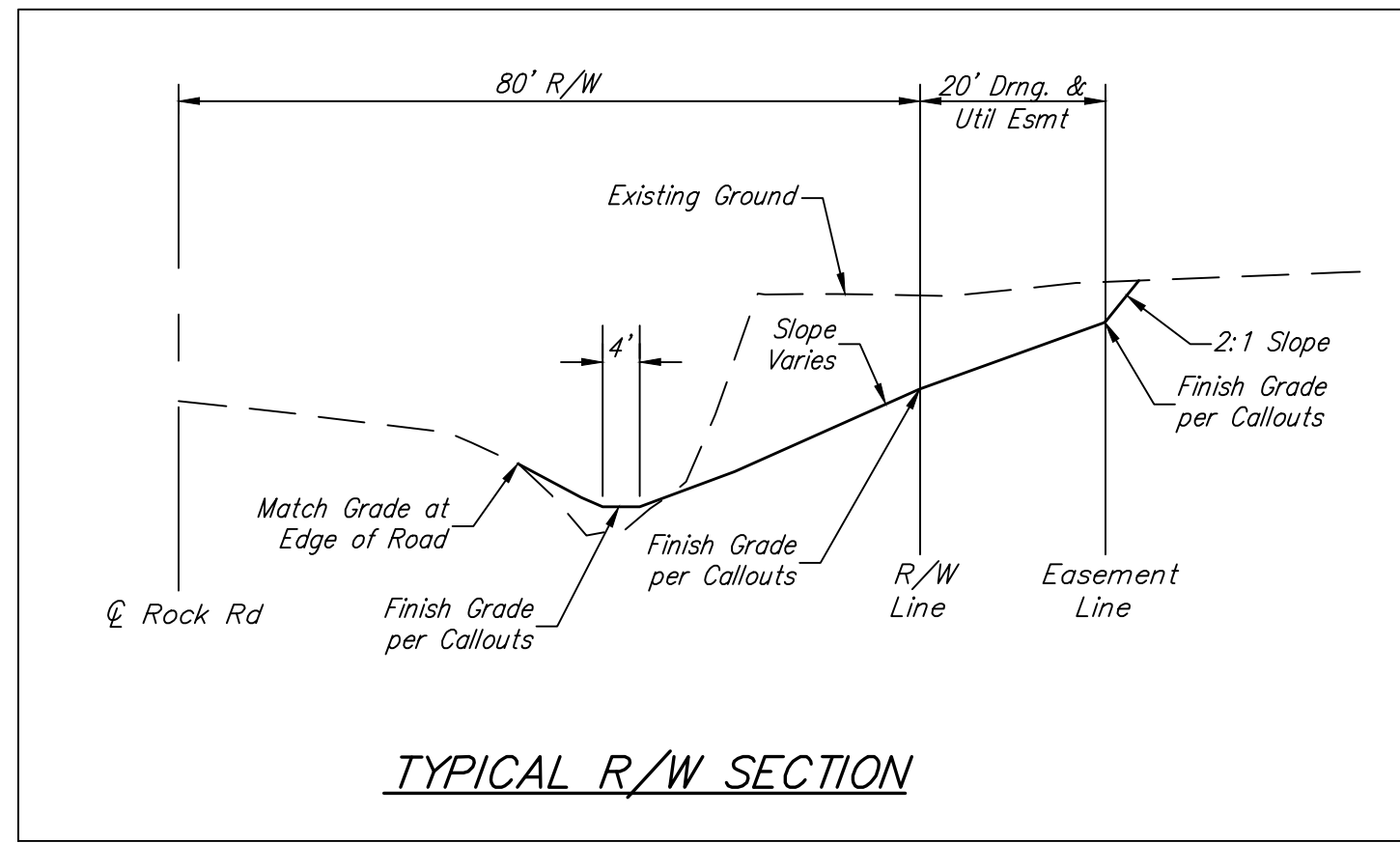
Approximate Easement Grading Quantities:
 (For Information Only)
 Excavation: 3,776 C.Y.
 Fill: 331 C.Y.


The Contractor shall grade the easements as shown to the elevations given on the easement grading plan.

The Contractor shall 'straight' grade the easements between the elevations given. Where a callout designates 'Match', the Contractor will grade to the existing ground elevation.

Excess excavation from easement grading and from sanitary sewer construction shall be placed on the lots as indicated to the elevations shown.

All cost to be included in the Lump Sum bid item "Easement Grading"



		Rocky Ford Addition EASEMENT & R/W GRADING Sanitary Sewer Improvements	
Baughman Company, P.A. 315 Ellis St. Wichita, KS 67211 P 316-262-7271 F 316-262-0149 ENGINEERING SURVEYING PLANNING LANDSCAPE ARCHITECTURE			
PROJECT NUMBER	DESIGN	DRAWN	
	DMV	DHL	
REVISIONS:	APPROVED	DATE	
		10-30-17	10/29/17
	SCALE	Noted	
	SHEET	22 OF 26	

