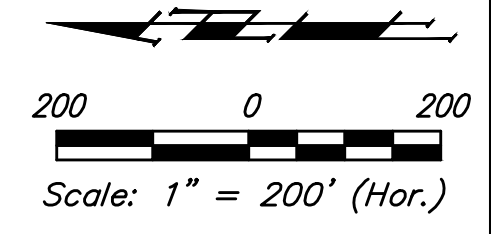


**BENCHMARKS:**  
**BM #1:** City of Wichita Benchmark Disk at South End of Hubguard on the SW Cor. of R.C.B.C., West Side of Rock Road, 706' North-Northwest of the Northwest corner of Lot 44, Block A, Rocky Ford Addition Elev. = 1367.92 NAVD88

**BM #2:** "□" on Fence Footing under warning US Airforce Installation Sign West of Rock Road, 400' N. of W<sub>1</sub>/<sub>4</sub> Cor. Elev. = 1377.45 NAVD88

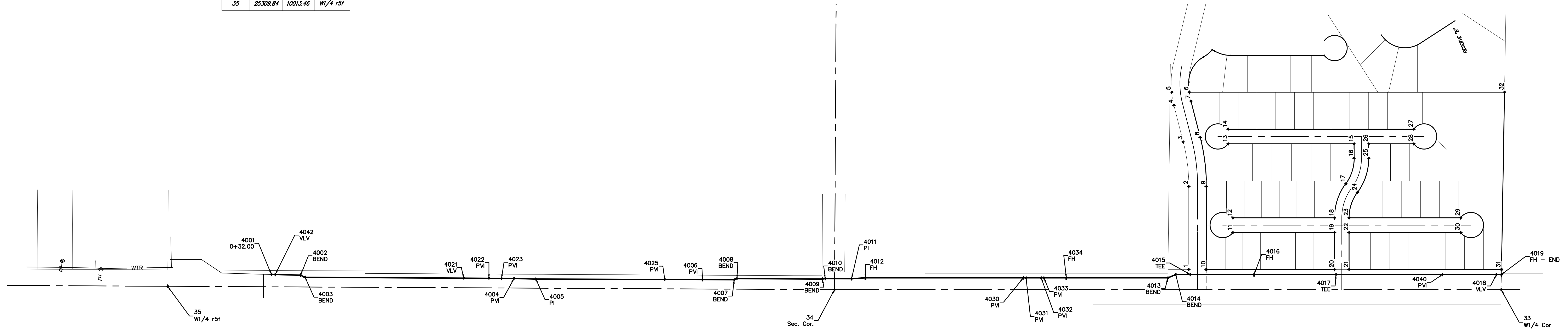
**BM #3:** "□" on Northeast Cor. Headwall RCP. East of Rock Road and South of Arnold Blvd. Elev. = 1376.10 NAVD88

**BM #4:** "□" on Top of Curb by Fire Hydrant. South of Concrete Drive at 2800 S. Rock Road. Elev. = 1379.84 NAVD88



IRONS			
Point #	Northing	Easting	Description
1	21243.89	10080.00	
2	21243.89	10410.11	
3	21266.10	10587.42	
4	21303.01	10732.47	
5	21312.21	10785.00	
6	21241.79	10785.00	
7	21235.17	10749.73	
8	21198.26	10604.68	
9	21173.89	10410.11	
10	21173.89	10080.00	
11	21068.16	10227.25	
12	21068.16	10285.25	
13	21087.18	10579.75	
14	21087.18	10637.75	
15	20585.39	10579.75	
16	20585.39	10522.56	
17	20618.74	10421.11	
18	20663.39	10285.25	
19	20663.39	10227.25	
20	20663.39	10080.00	
21	20605.39	10080.00	
22	20605.39	10227.25	
23	20605.39	10285.25	
24	20572.05	10386.70	
25	20527.39	10522.56	
26	20527.39	10579.75	
27	20347.67	10637.75	
28	20347.67	10579.75	
29	20161.12	10285.25	
30	20161.12	10227.25	
31	19998.63	10080.00	
32	19998.60	10785.00	
33	20000.00	10000.00	W <sub>1</sub> / <sub>4</sub> Cor
34	22654.30	10000.00	Sec. Cor.
35	25309.84	10013.46	W <sub>1</sub> / <sub>4</sub> r5f

WATER MAIN POINTS			
Point #	Northing	Easting	Description
4001	24896.63	10060.47	0+32.00
4002	24780.74	10057.38	BEND
4003	24762.69	10049.34	BEND
4004	23930.40	10044.48	PVI
4005	23843.49	10042.21	PI
4006	23180.43	10040.00	PVI
4007	23053.79	10039.58	BEND
4008	23043.05	10043.97	BEND
4009	22702.88	10042.24	BEND
4010	22691.49	10044.11	BEND
4011	22586.42	10043.86	PI
4012	22531.54	10047.00	FH
4013	21326.73	10047.00	BEND
4014	21285.35	10060.00	BEND
4015	21237.89	10060.00	TEE
4016	20984.13	10060.00	FH
4017	20657.39	10060.00	TEE
4018	20018.94	10060.00	VLV
4019	19998.94	10060.00	FH - END
4021	24130.39	10045.65	VLV
4022	24030.40	10045.07	PVI
4023	23980.40	10044.78	PVI
4025	23330.43	10040.50	PVI
4030	21902.54	10047.00	PVI
4031	21891.54	10047.00	PVI
4032	21831.54	10047.00	PVI
4033	21820.54	10047.00	PVI
4034	21731.54	10047.00	FH
4040	20234.13	10060.00	PVI
4042	24881.64	10060.07	VLV



	<b>Rocky Ford Addition</b> <b>COORDINATES</b> Water Distribution System	
	<small>Baughman Company, P.A. 315 Ellis St. Wichita, KS 67211 P 316-262-7271 F 316-262-0149          ENGINEERING   SURVEYING   PLANNING   LANDSCAPE ARCHITECTURE</small>	
PROJECT NUMBER <b>448-90350</b>	DESIGN DMV	DRAWN DDL
REVISIONS:	APPROVED 	DATE 10/29/17
SCALE Noted		SHEET <b>16 OF 17</b>