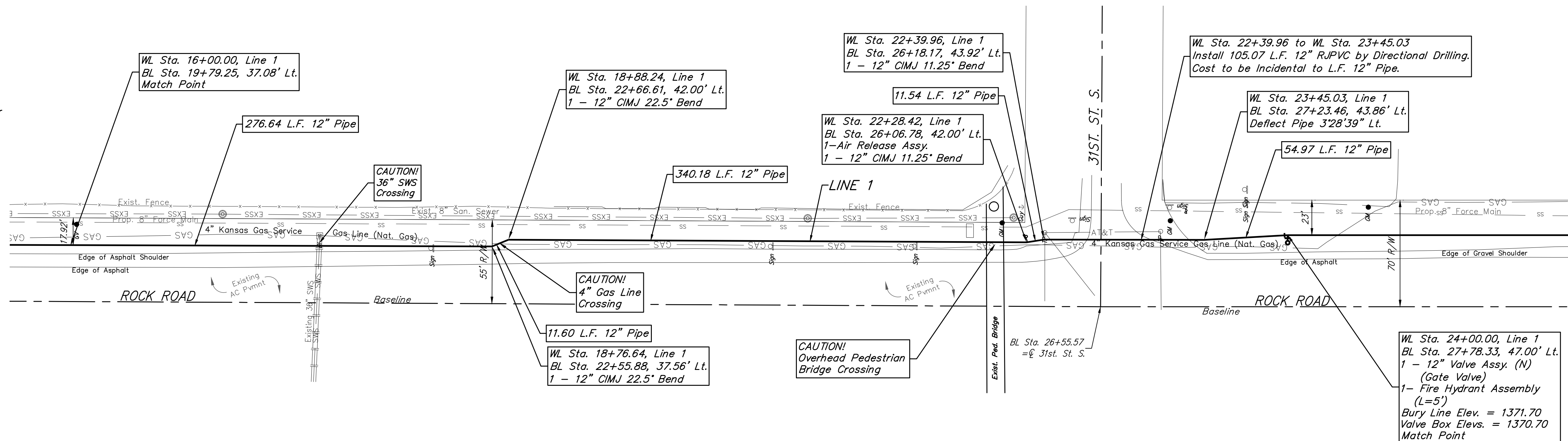
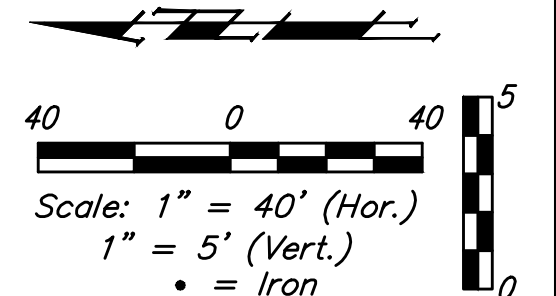
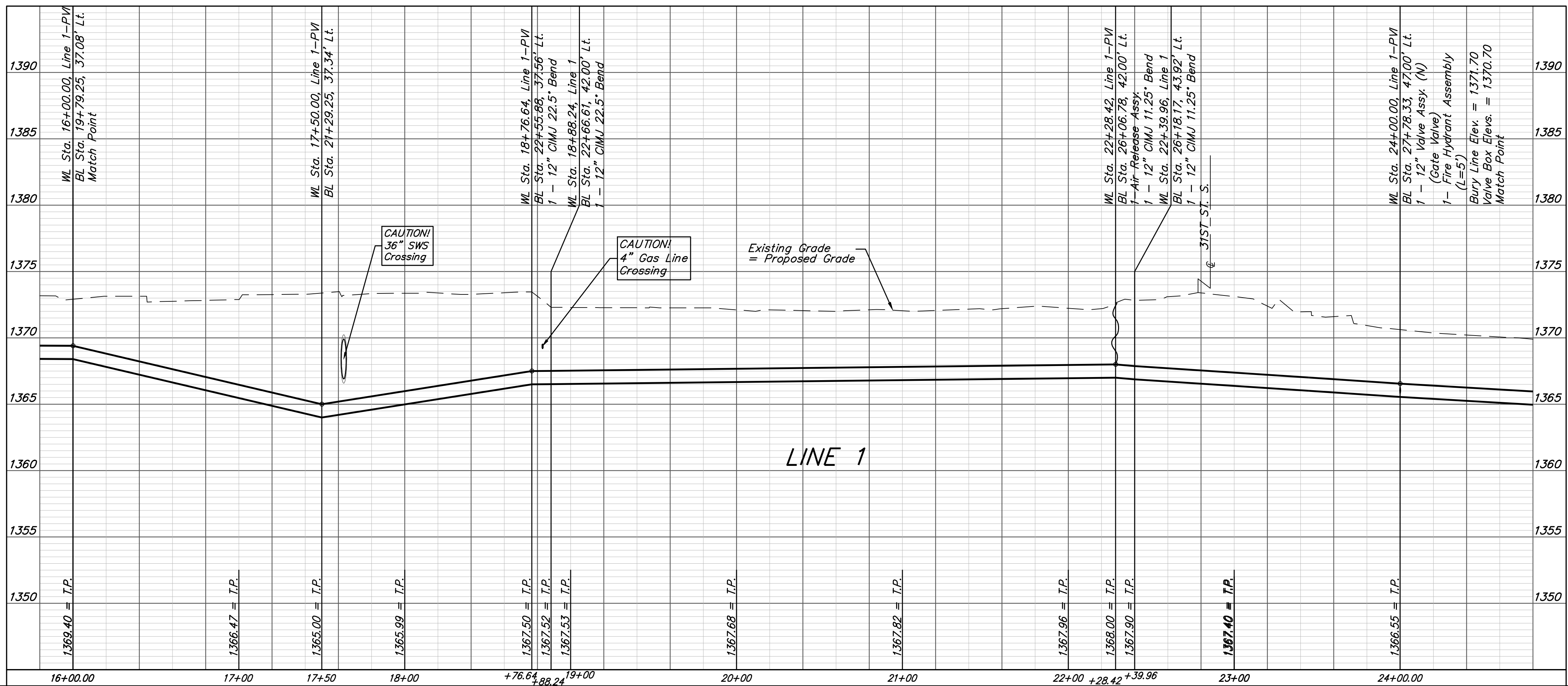


BENCHMARKS:
BM #1: City of Wichita Benchmark Disk at South End of Hubguard on the SW Cor. of R.C.B.C., West Side of Rock Road, 706' North-Northwest of the Northwest corner of Lot 44, Block A, Rocky Ford Addition Elevation = 1367.92 NAVD88
BM #2: "□" on Fence Footing under warning US Airforce Installation Sign West of Rock Road, 400' N. of W₁ Cor. Elevation = 1377.45 NAVD88
BM #3: "□" on Northeast Cor. Headwall RCP. East of Rock Road and South of Arnold Blvd. Elevation = 1376.10 NAVD88
BM #4: "□" on Top of Curb by Fire Hydrant. South of Concrete Drive at 2800 S. Rock Road. Elevation = 1379.84 NAVD88



FIRE HYDRANTS REQUIRED					
LINE	STATION	BURY LINE ELEVATION	TOP OF PIPE ELEVATION	FIRE HYDRANT BURY REQUIRED*	VALVE STEM EXT. REQUIRED (ft)*
1	24+00.00	1370.70	1366.55	6'	-



	Rocky Ford Addition	
	LINE 1	
Water Distribution System		
<small>Baughman Company, P.A. 315 Ellis St. Wichita, KS 67211 P 316-262-7271 F 316-262-0149 ENGINEERING SURVEYING PLANNING LANDSCAPE ARCHITECTURE</small>		
PROJECT NUMBER 448-90350	DESIGN DMV	DRAWN DHL
REVISIONS:	APPROVED	DATE 10/29/17
	SCALE Noted	SHEET
		6 OF 17