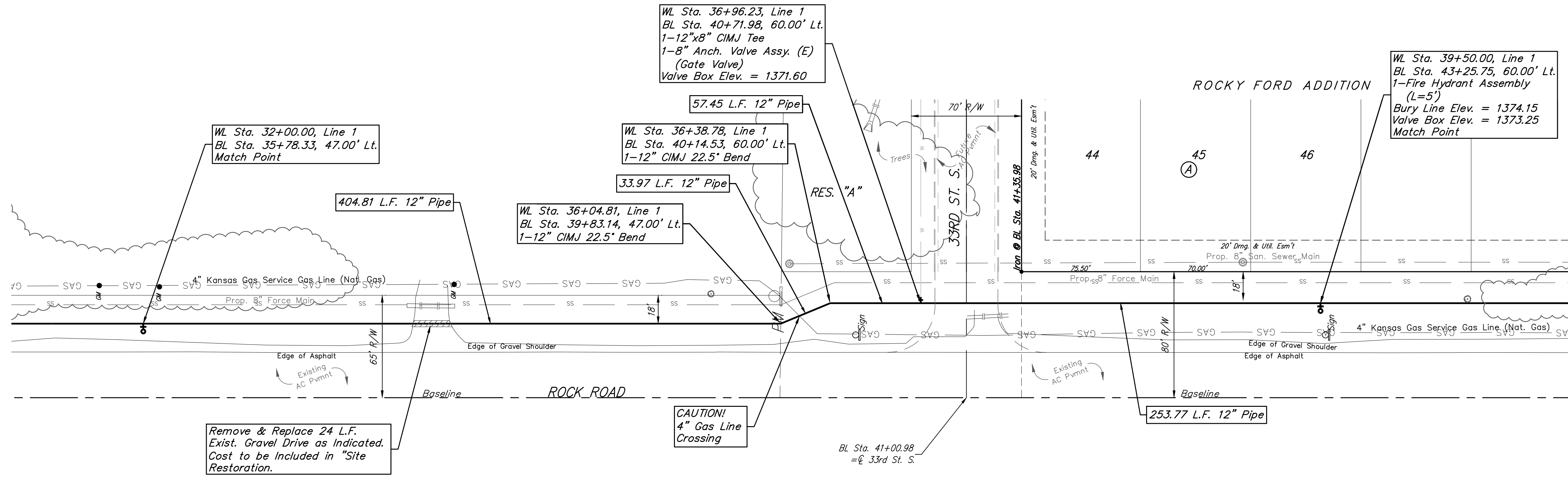
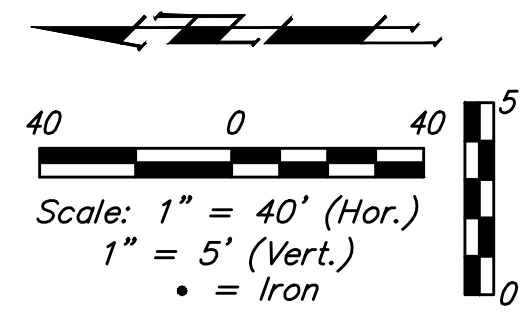


BENCHMARKS:
BM #1: City of Wichita Benchmark Disk at South End of Hubguard on the SW Cor. of R.C.B.C., West Side of Rock Road, 706' North-Northwest of the Northwest corner of Lot 44, Block A, Rocky Ford Addition Elev. = 1367.92 NAVD88

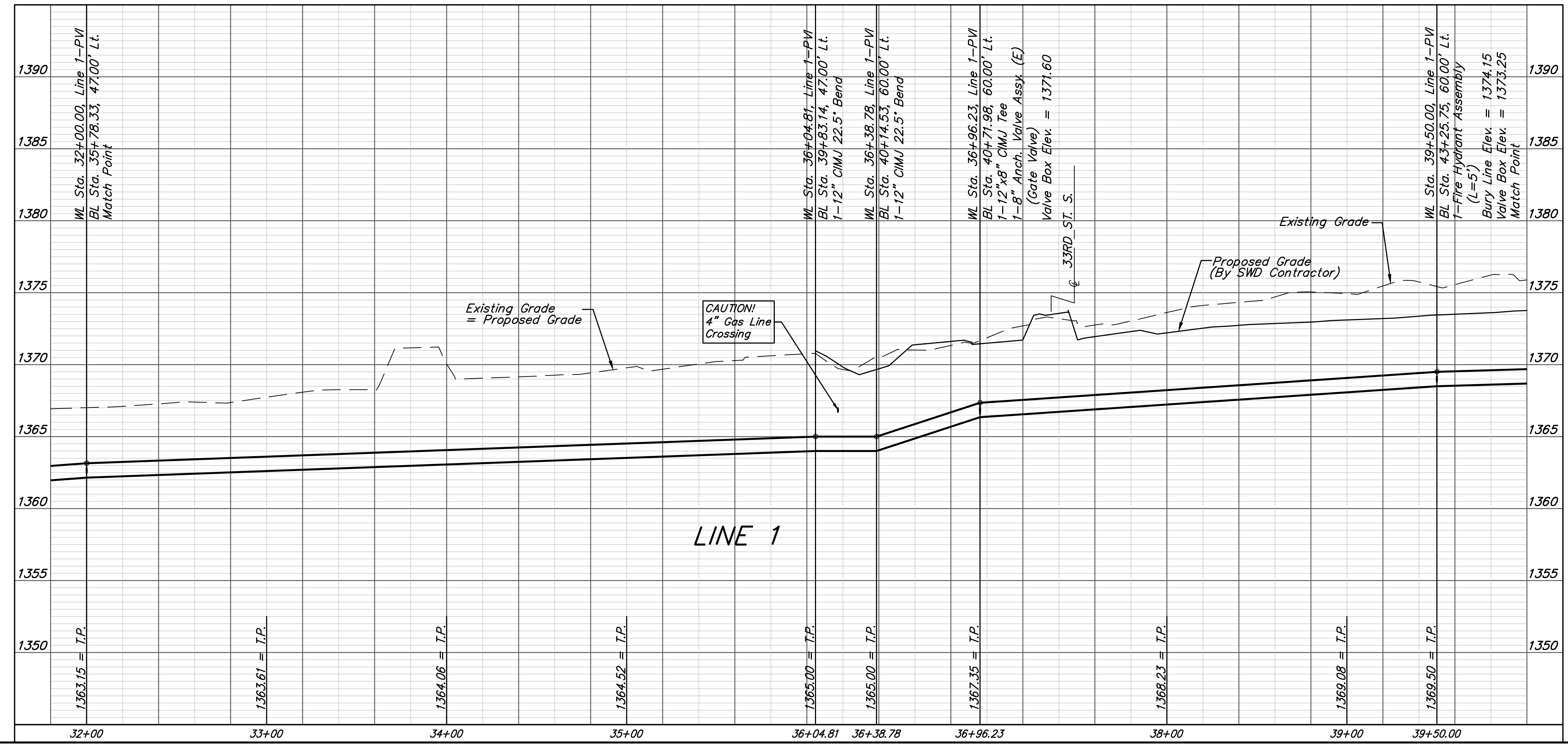
BM #2: "□" on Fence Footing under warning US Airforce Installation Sign West of Rock Road, 400' N. of W₁ Cor. Elev. = 1377.45 NAVD88

BM #3: "□" on Northeast Cor. Headwall RCP. East of Rock Road and South of Arnold Blvd. Elev. = 1376.10 NAVD88

BM #4: "□" on Top of Curb by Fire Hydrant. South of Concrete Drive at 2800 S. Rock Road. Elev. = 1379.84 NAVD88



FIRE HYDRANTS REQUIRED					
LINE	STATION	BURY LINE ELEVATION	TOP OF PIPE ELEVATION	FIRE HYDRANT BURY REQUIRED*	VALVE STEM EXT. REQUIRED (ft)*
1	39+50.00	1374.15	1369.50	5.5'	-



Baughman

Rocky Ford Addition
LINE 1
 Water Distribution System

Baughman Company, P.A. 315 Ellis St. Wichita, KS 67211 P 316-262-7271 F 316-262-0149
 ENGINEERING | SURVEYING | PLANNING | LANDSCAPE ARCHITECTURE

PROJECT NUMBER 448-90350	DESIGN DMV	DRAWN DIL
REVISIONS:	APPROVED	DATE 10/29/17
	SCALE Noted	SHEET

8 OF 17

I:\Projects\Rocky Ford Addition_1606P207\Engineering\WTR MAIN 16-11-E592\WTR Plans.dwg