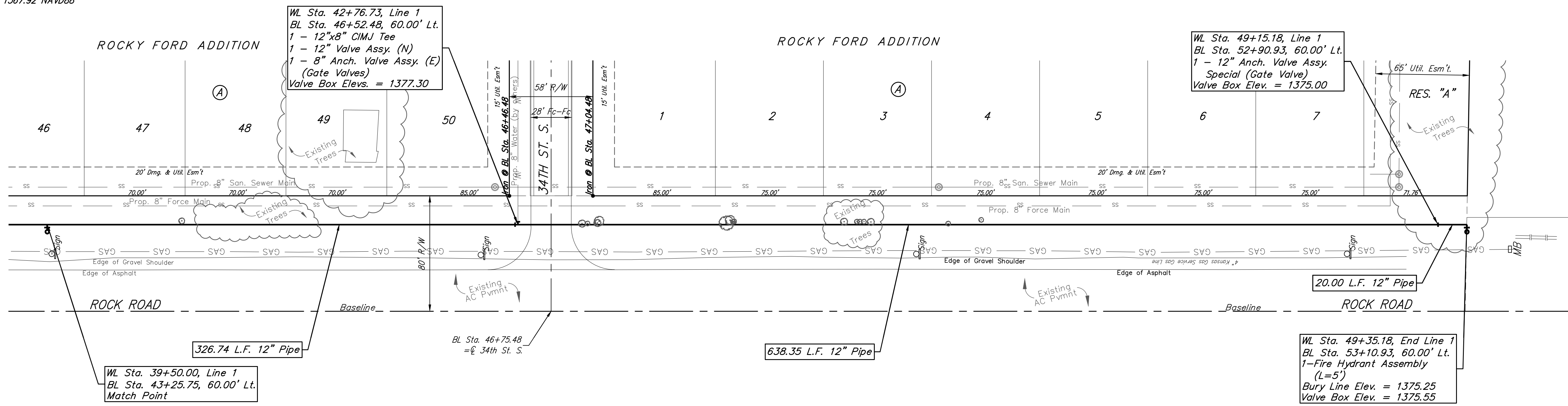
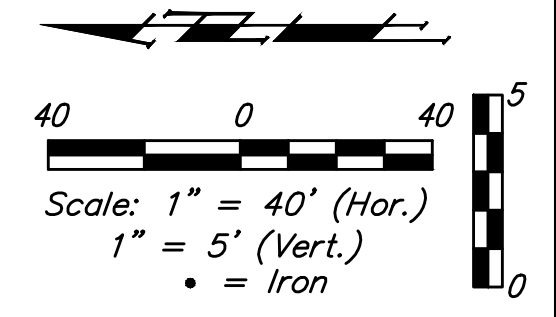
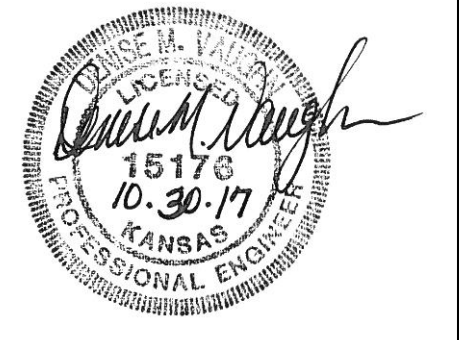
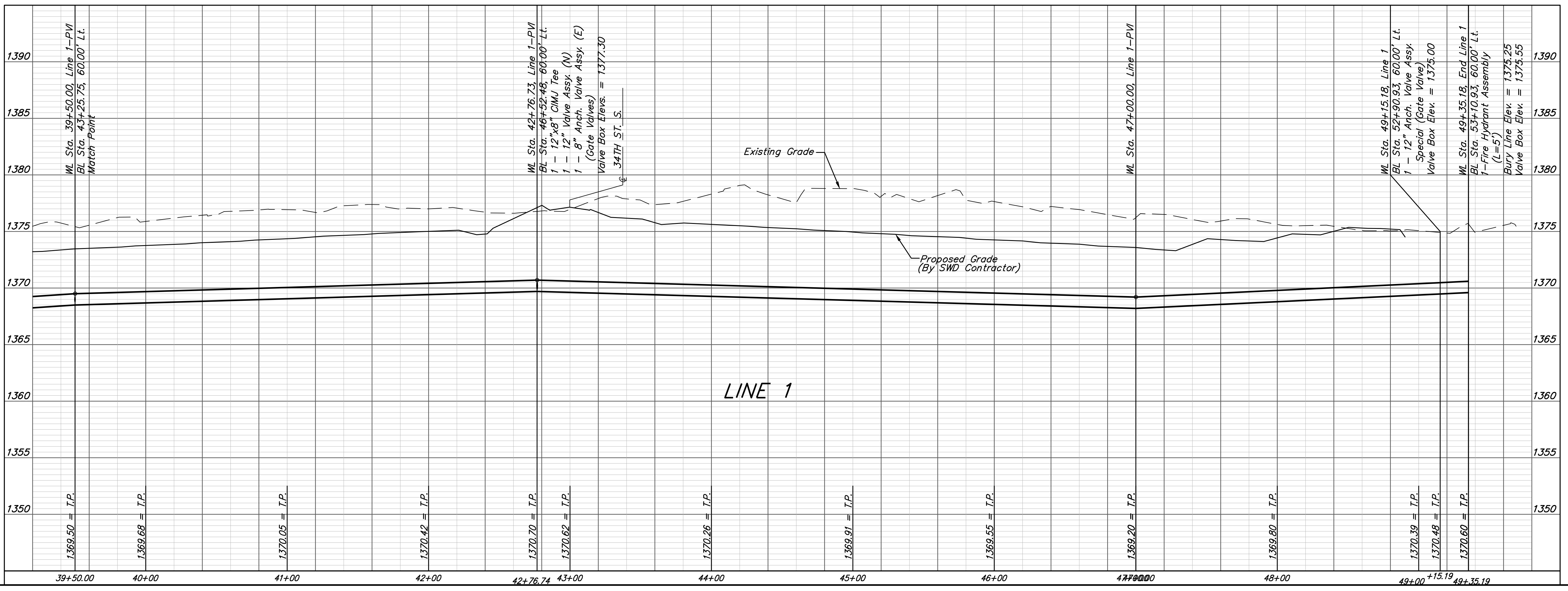


**BENCHMARKS:**  
**BM #1:** City of Wichita Benchmark Disk at South End of Hubguard on the SW Cor. of R.C.B.C., West Side of Rock Road, 706' North-Northwest of the Northwest corner of Lot 44, Block A, Rocky Ford Addition Elev. = 1367.92 NAVD88  
**BM #2:** "□" on Fence Footing under warning US Airforce Installation Sign West of Rock Road, 400' N. of W<sub>2</sub> Cor. Elev. = 1377.45 NAVD88  
**BM #3:** "□" on Northeast Cor. Headwall RCP. East of Rock Road and South of Arnold Blvd. Elev. = 1376.10 NAVD88  
**BM #4:** "□" on Top of Curb by Fire Hydrant. South of Concrete Drive at 2800 S. Rock Road. Elev. = 1379.84 NAVD88



Remove Existing Trees Only as Necessary for Construction. Cost to be Included in "Site Clearing"

FIRE HYDRANTS REQUIRED					
LINE	STATION	BURY LINE ELEVATION	TOP OF PIPE ELEVATION	FIRE HYDRANT BURY REQUIRED*	VALVE STEM EXT. REQUIRED (ft)*
1	49+35.18	1375.25	1370.60	5.5'	-



**Baughman** Rocky Ford Addition  
**LINE 1**  
 Water Distribution System

Baughman Company, P.A. 315 Ellis St. Wichita, KS 67211 P 316-262-7271 F 316-262-0149  
 ENGINEERING | SURVEYING | PLANNING | LANDSCAPE ARCHITECTURE

PROJECT NUMBER 448-90350	DESIGN DMV	DRAWN DHL
REVISIONS:	APPROVED	DATE 10/29/17
SCALE Noted		SHEET <b>9 OF 17</b>

I:\Projects\Rocky Ford Addition\_1606P207.Engineering\WTR MAIN 1641E592\WTR Plans.dwg