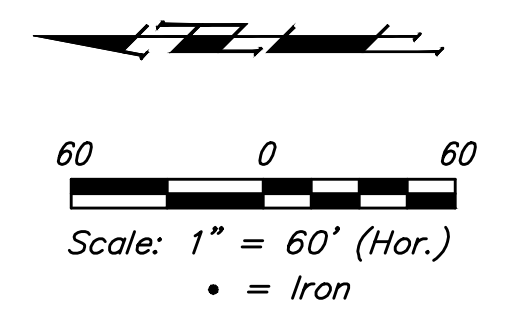
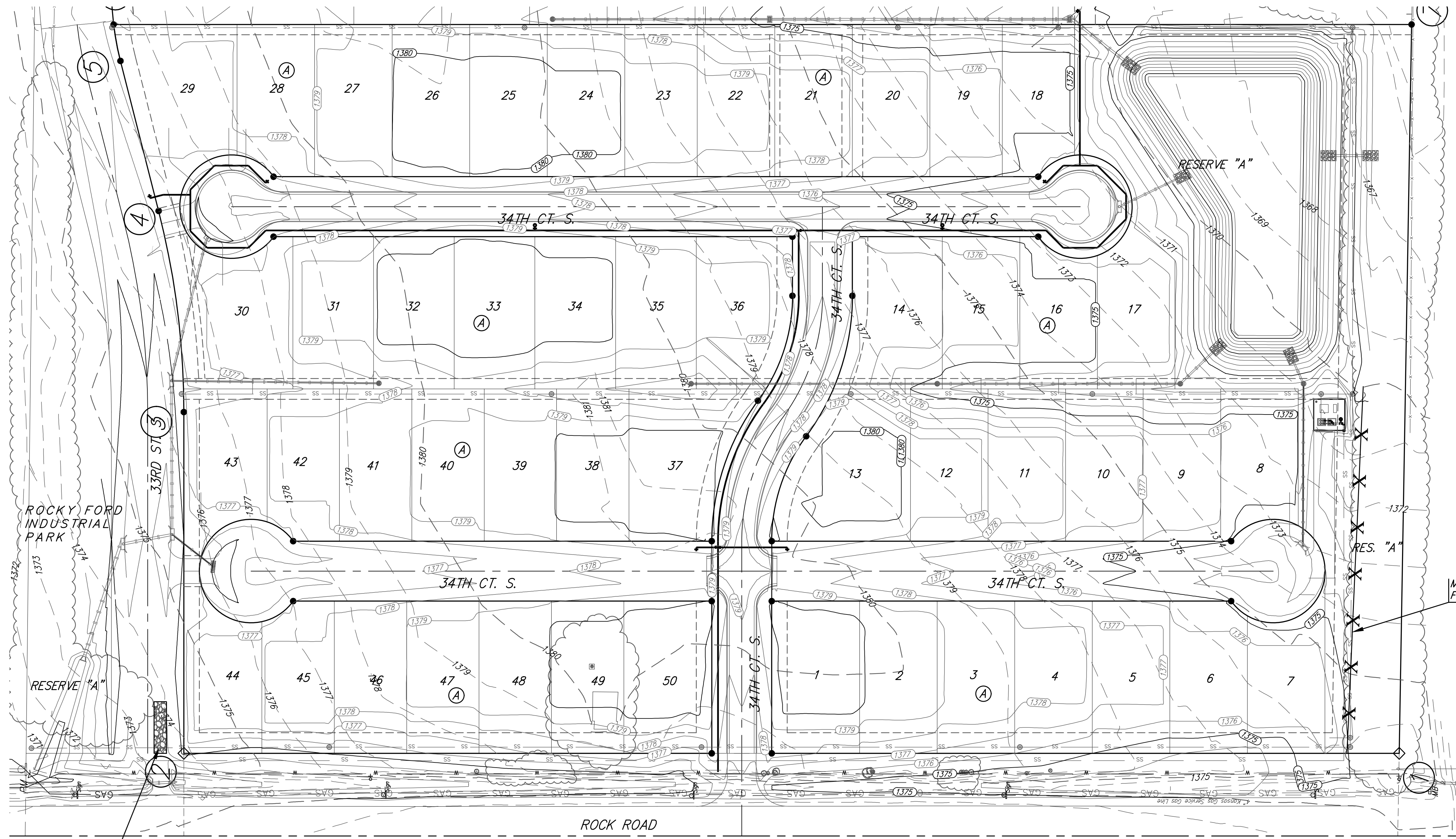


BENCHMARKS:
 BM #1: City of Wichita Benchmark Disk at South End of Hubguard on the SW Cor. of R.C.B.C. West Side of Rock Road, 706' North-Northwest of the Northwest Corner of Lot 44, Block A, Rocky Ford Addition Elev. = 1367.92 NAVD88

BM #2: "□" on Fence Footing under warning US Airforce Installation Sign West of Rock Road, 400' N. of W 1/2 Cor. Elev. = 1377.45 NAVD88



— 1365 — = Existing Ground
 — 1365 — = Proposed Grade by "Others" prior to construction
 • = Iron

Maintain 50' X 12' Gravel Construction Entrance per detail, sheet 8.

Maintain 356 L.F. of Silt Fence per detail, sheet .

EROSION CONTROL PLAN LEGEND

- DROP INLET PROTECTION
- CURB INLET PROTECTION
- SILT FENCING
- STRAW WATTLE FENCING
- DITCH CHECKS
- BACK OF CURB PROTECTION
- RIP RAP PROTECTION
- CUT-OFF TRENCH

NOTES:
 Contractor shall make sure all erosion control is in place before project is accepted. This plan represents the minimum standard. Any additional erosion control measures shall be installed by the Contractor as needed.

All areas disturbed during construction shall be seeded, mulched, and fertilized as per Cover Sheet General Notes.

EROSION CONTROL MEASURE	INSTALL	MAINTAIN
CUT-OFF TRENCH (LF)	0	0
CONSTRUCTION ENTRANCE (EA)	0	1
CURB INLET BARRIER (EA)	0	0
DITCH CHECK (EA)	0	0
DROP INLET PROTECTION (EA)	0	0
EROSION CONTROL (LS)	0	0
MULCH WATTLES (LF)	0	0
SILT FENCE (LF)	0	356
EROSION CONTROL MAT (SY)	0	0
MAINTAIN EROSION CONTROL BMP's (LS)	0	0

* ALL EXISTING BMPs INCLUDING CONSTRUCTION ENTRANCE, SEDIMENT BARRIERS, SILT FENCE, CUT-OFF TRENCH, AND EROSION CONTROL MAT SHALL BE MAINTAINED AND REPAIRED IF NECESSARY.



Baughman Rocky Ford Addition Phase I
EROSION CONTROL PLAN
 Water Distribution System

Baughman Company, P.A. 315 Ellis St. Wichita, KS 67211 P 316-262-7271 F 316-262-0149
 ENGINEERING | SURVEYING | PLANNING | LANDSCAPE ARCHITECTURE

PROJECT NUMBER 448-90350	DESIGN DMV	DRAWN DHL
REVISIONS:	APPROVED	DATE 10/24/17
	SCALE Noted	SHEET

7 OF 14