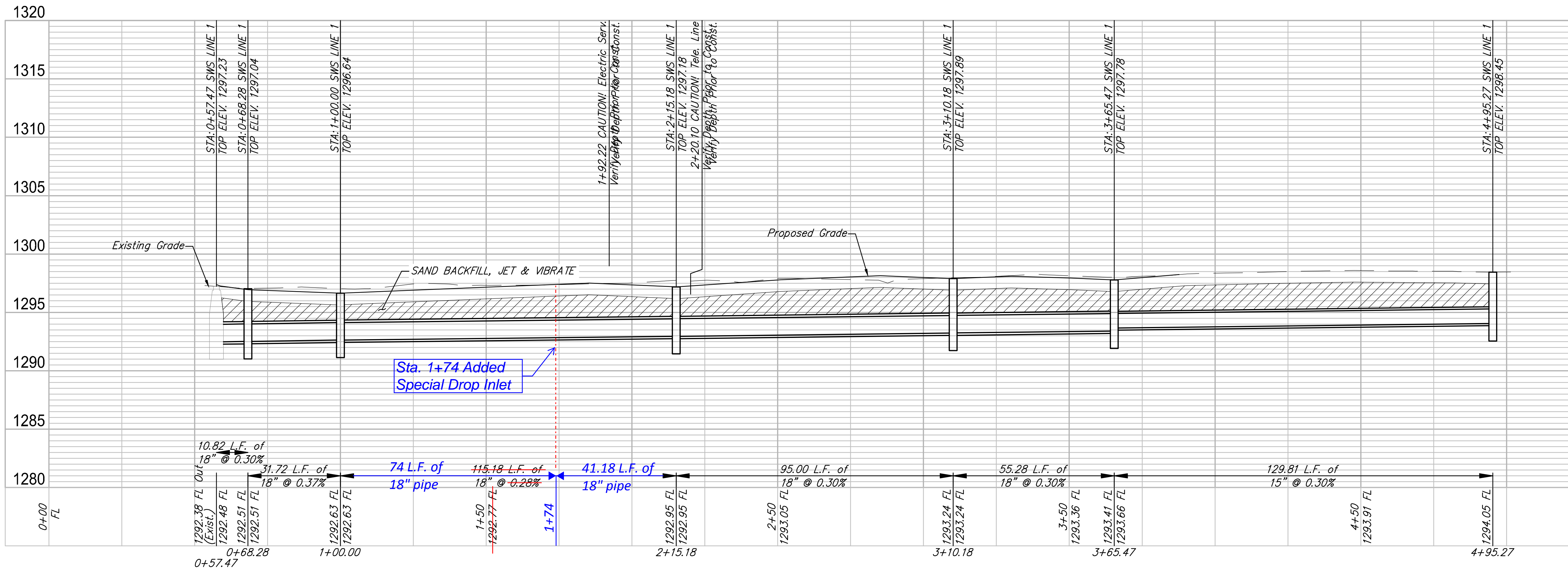
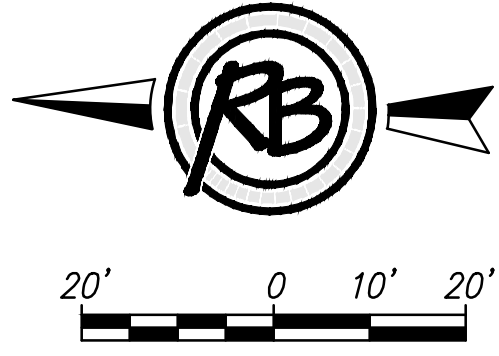
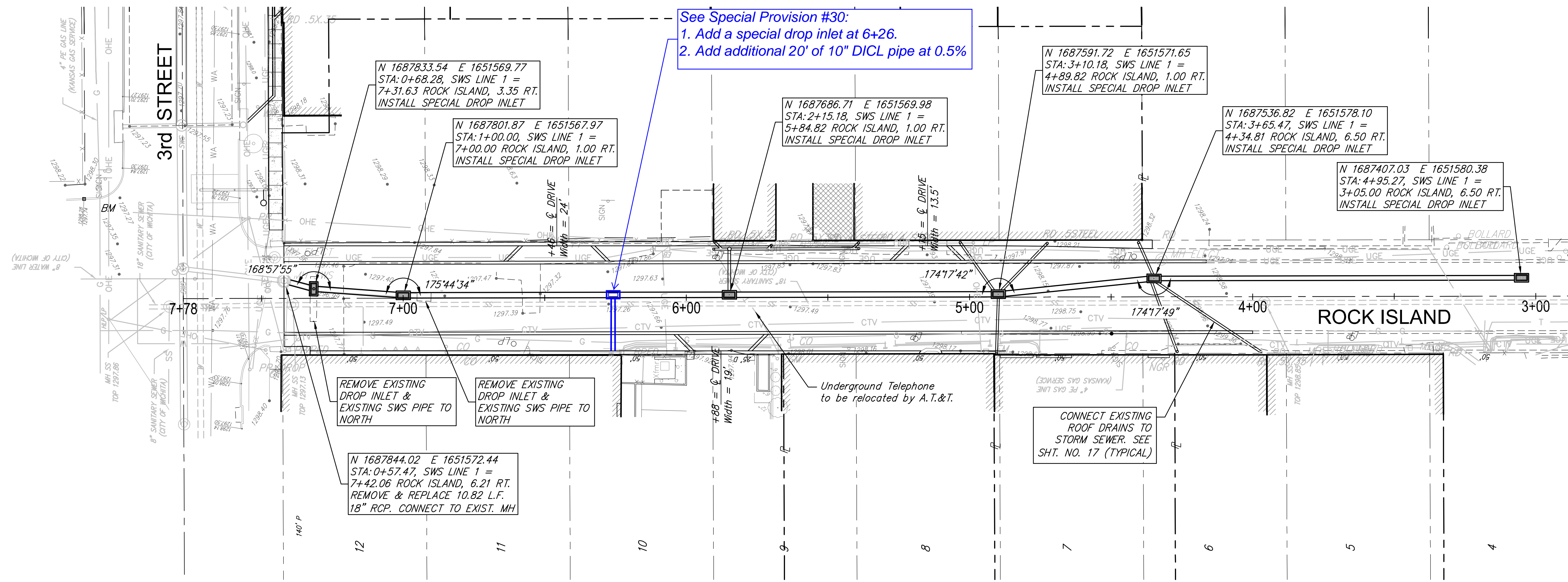


F:\Projects\Projects 4500-4999\4531T (Mosley and Rock Island - Old Town)\4531T Engineering Base.dwg



See Special Provision #30:  
 1. Add a special drop inlet at 6+26.  
 2. Add additional 20' of 10" DI CL pipe at 0.5%

N 168783.54 E 1651569.77  
 STA: 0+68.28, SWS LINE 1 =  
 7+31.63 ROCK ISLAND, 3.35 RT.  
 INSTALL SPECIAL DROP INLET

N 1687801.87 E 1651567.97  
 STA: 1+00.00, SWS LINE 1 =  
 7+00.00 ROCK ISLAND, 1.00 RT.  
 INSTALL SPECIAL DROP INLET

N 1687686.71 E 1651569.98  
 STA: 2+15.18, SWS LINE 1 =  
 5+84.82 ROCK ISLAND, 1.00 RT.  
 INSTALL SPECIAL DROP INLET

N 1687591.72 E 1651571.65  
 STA: 3+10.18, SWS LINE 1 =  
 4+89.82 ROCK ISLAND, 1.00 RT.  
 INSTALL SPECIAL DROP INLET

N 1687536.82 E 1651578.10  
 STA: 3+65.47, SWS LINE 1 =  
 4+34.81 ROCK ISLAND, 6.50 RT.  
 INSTALL SPECIAL DROP INLET

N 1687407.03 E 1651580.38  
 STA: 4+95.27, SWS LINE 1 =  
 3+05.00 ROCK ISLAND, 6.50 RT.  
 INSTALL SPECIAL DROP INLET

N 1687844.02 E 1651572.44  
 STA: 0+57.47, SWS LINE 1 =  
 7+42.06 ROCK ISLAND, 6.21 RT.  
 REMOVE & REPLACE 10.82 L.F.  
 18" RCP. CONNECT TO EXIST. MH

REMOVE EXISTING  
 DROP INLET &  
 EXISTING SWS PIPE TO  
 NORTH

REMOVE EXISTING  
 DROP INLET &  
 EXISTING SWS PIPE TO  
 NORTH

Underground Telephone  
 to be relocated by A.T.&T.

CONNECT EXISTING  
 ROOF DRAINS TO  
 STORM SEWER. SEE  
 SHT. NO. 17 (TYPICAL)

**RUGGLES BOHM**  
 PROFESSIONAL ENGINEERS & ARCHITECTS  
 15373  
 12-2-15  
 KANSAS PROFESSIONAL ENGINEER

PROJECT NUMBER: 472-85915  
 DRAWING FILE: 4531T Engineering Base

DESIGN: KWL/TR  
 DRAWN: DS

REVIEW: 9-25-2015  
 DATE: Dec. 2, 2015

**MOSLEY & ROCK ISLAND**  
**SWS-Rock Island**  
 Wichita, Kansas

RB JOB: 4531T  
 SHEET: 16 OF 59