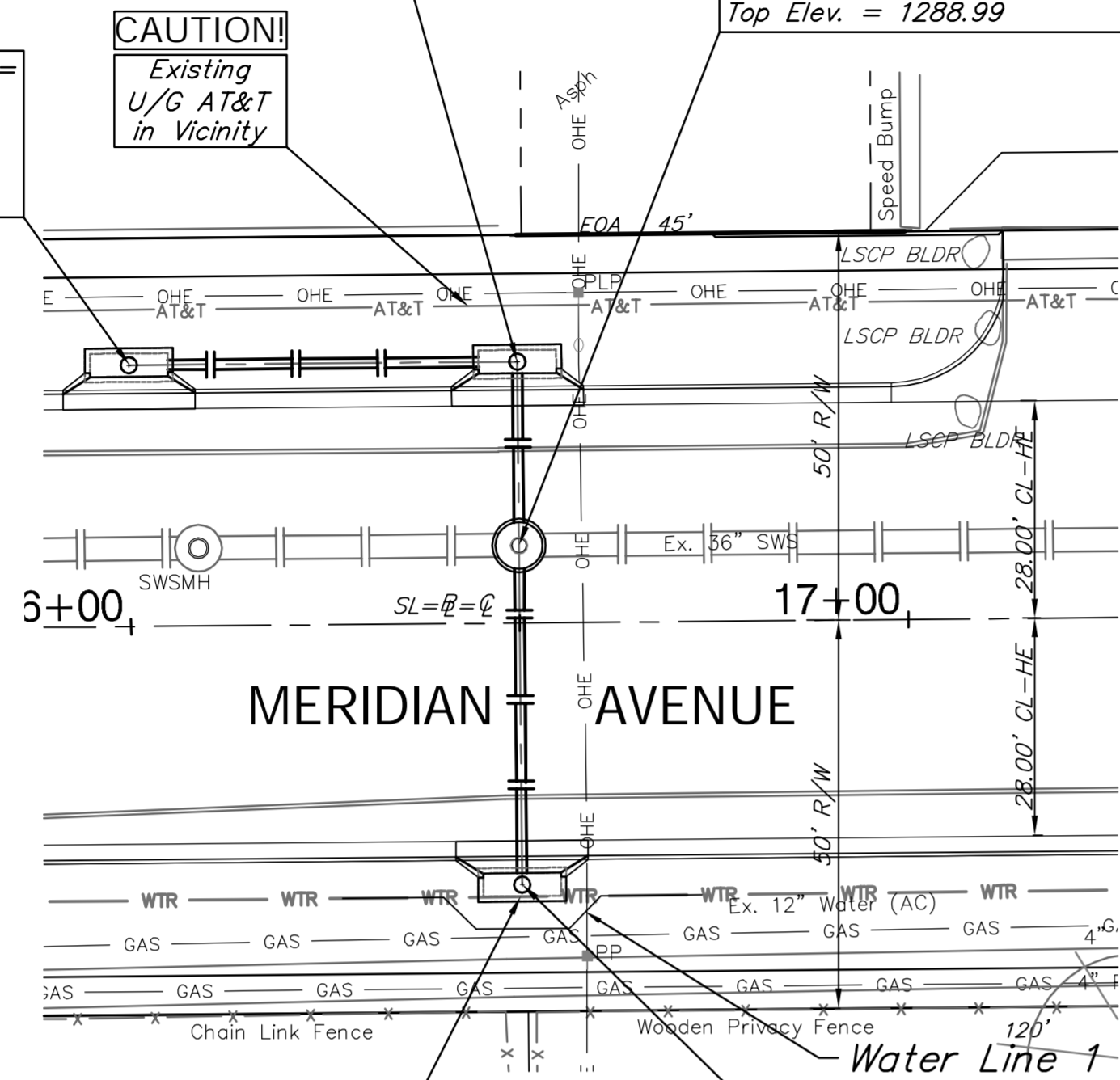


BENCHMARK:
 BM #6 - Chiseled "a" on the Top of Curb on the North Side of Grant Street adjacent to Light Pole, 358'± East of Centerline of Meridian.
 Elev. = 1289.67 (NAVD 88)

Sta. 0+00.00, Begin SWS Line 1 =
 B.L. Sta. 16+00.00, 33.67' Lt.
 Construct Inlet, Curb (Type 1A)
 (L=10' W=3')
 Top Elev. = 1288.90

Sta. 0+50.00, SWS Line 1 =
 B.L. Sta. 16+50.00, 33.67' Lt.
 Construct Inlet, Curb (Type 1A)
 (L=10' W=3')
 Top Elev. = 1288.69

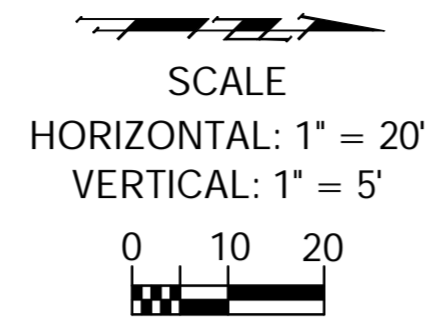
Sta. 0+73.64, SWS Line 1 =
 B.L. Sta. 16+50.00, 10.03' Lt.
 Construct MH, Shallow SWS (6')
 Connect Ex. 36" RCP (N & S),
 Grout, and Seal Tight.
 Top Elev. = 1288.99



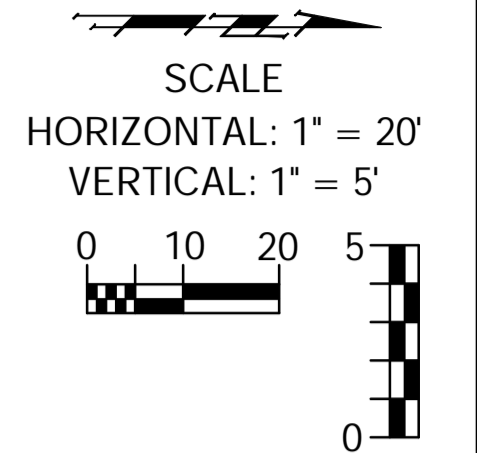
CAUTION!
 Existing
 12" Water
 in Vicinity

SWS Line 1

Sta. 1+17.34, End SWS Line 1 =
 B.L. Sta. 16+50.00, 33.67' Rt.
 Construct Inlet, Curb (Type 1a)
 (L=10' W=3')
 Top Elev. = 1288.69



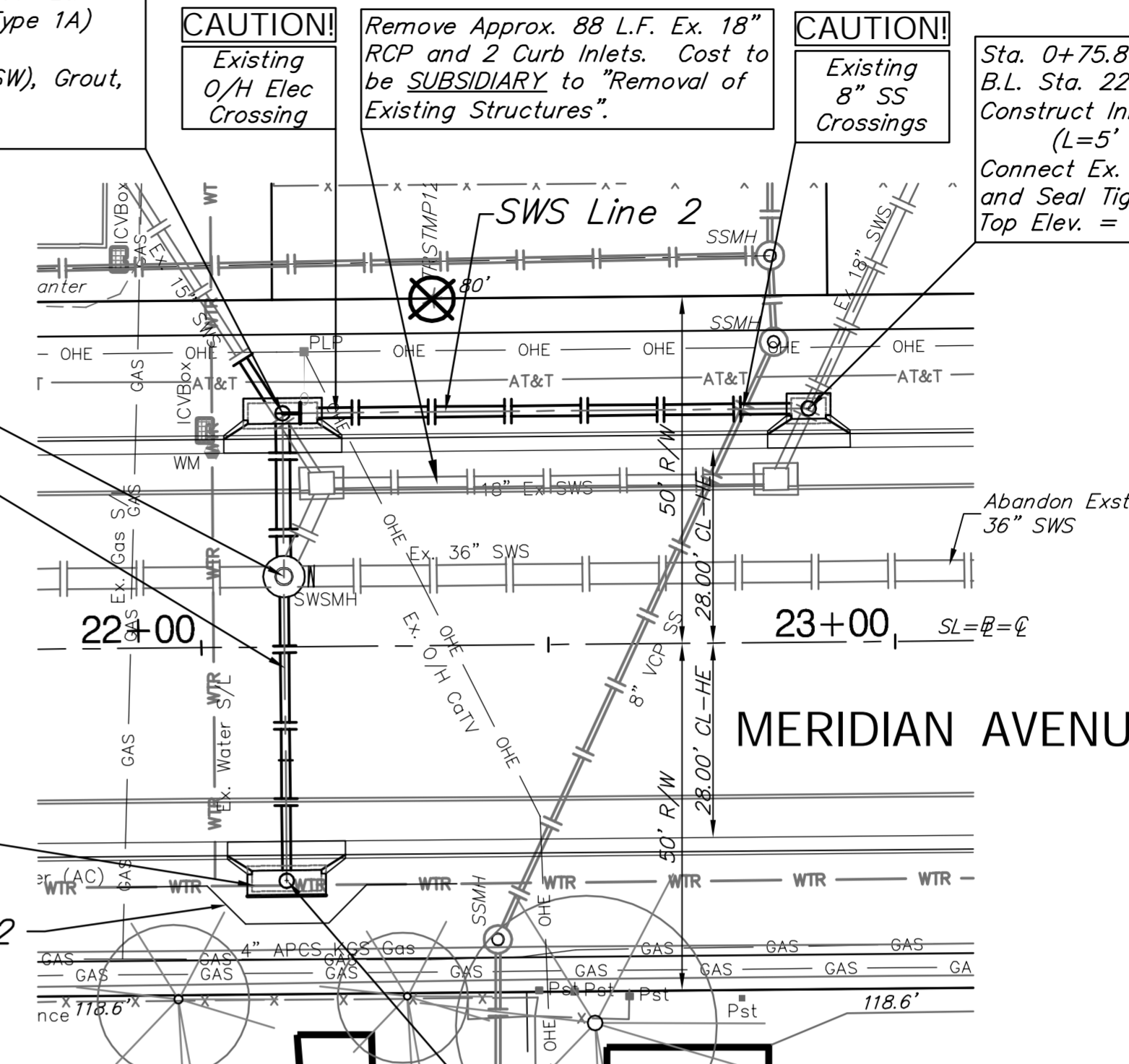
REGION NO.	STATE	PROJECT NO.	FISCAL YEAR	SHEET NO.	TOTAL SHEETS
7	KANSAS	087 N-0593-01	2015	37	153



Sta. 0+00.00, Begin SWS Line 2 =
 Sta. 0+00.00, SWS Line 2a =
 B.L. Sta. 22+12.00, 33.67' Lt.
 Construct Inlet, Curb (Type 1A)
 (L=10' W=3')
 Connect Ex. 15" RCP (SW), Grout,
 and Seal Tight.
 Top Elev. = 1289.43

Sta. 0+23.52, SWS Line 2a =
 B.L. Sta. 22+12.00, 10.13' Lt.
 Remove Ex. SWS Manhole and Plug &
 Abandon Ex. 36" RCP (N).
 Construct MH, Shallow SWS (6')
 Connect Ex. 36" RCP (S), Grout, and
 Seal Tight.
 Top Elev. = 1289.63

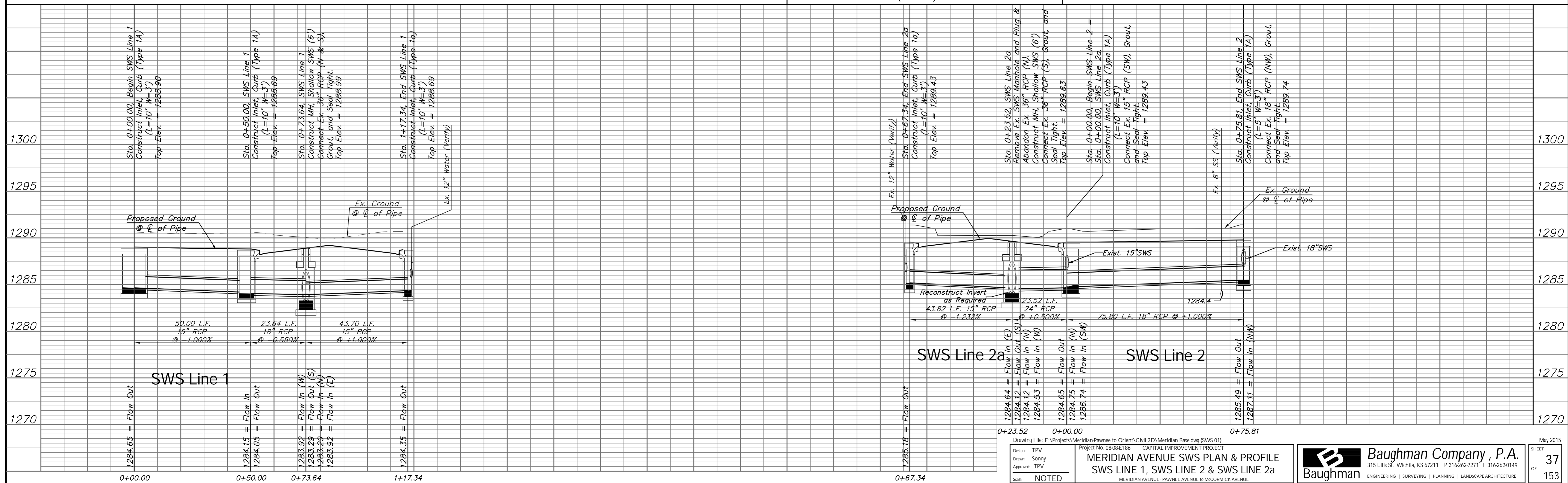
CAUTION!
 Existing
 12" Water
 in Vicinity



Sta. 0+67.34, End SWS Line 2a =
 B.L. Sta. 22+12.00, 31.50' Rt.
 Construct Inlet, Curb (Type 1a)
 (L=10' W=3')
 Top Elev. = 1289.43

SWS Line 2 & 2a

BENCHMARK:
 BM #5 - Chiseled "a" on the Top of Curb on the North Side of Lydia Avenue adjacent to Light Pole, 355'± East of Centerline of Meridian.
 Elev. = 1290.29 (NAVD 88)



Drawing File: E:\Projects\Meridian\Drawings\Orient\Civil\3D\Meridian Base.dwg [SWS 01]
 Design: TPV
 Drawn: Sonny
 Approved: TPV
 Scale: NOTED

MERIDIAN AVENUE SWS PLAN & PROFILE
SWS LINE 1, SWS LINE 2 & SWS LINE 2a
 MERIDIAN AVENUE - PAVINE AVENUE TO MCCORMICK AVENUE