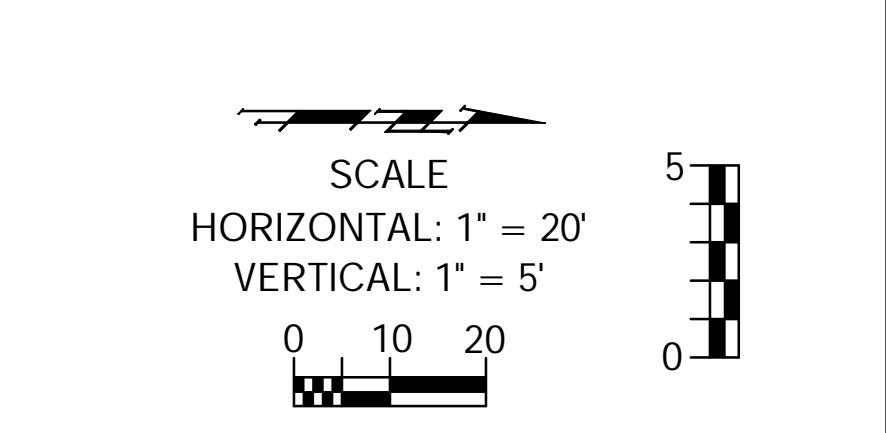
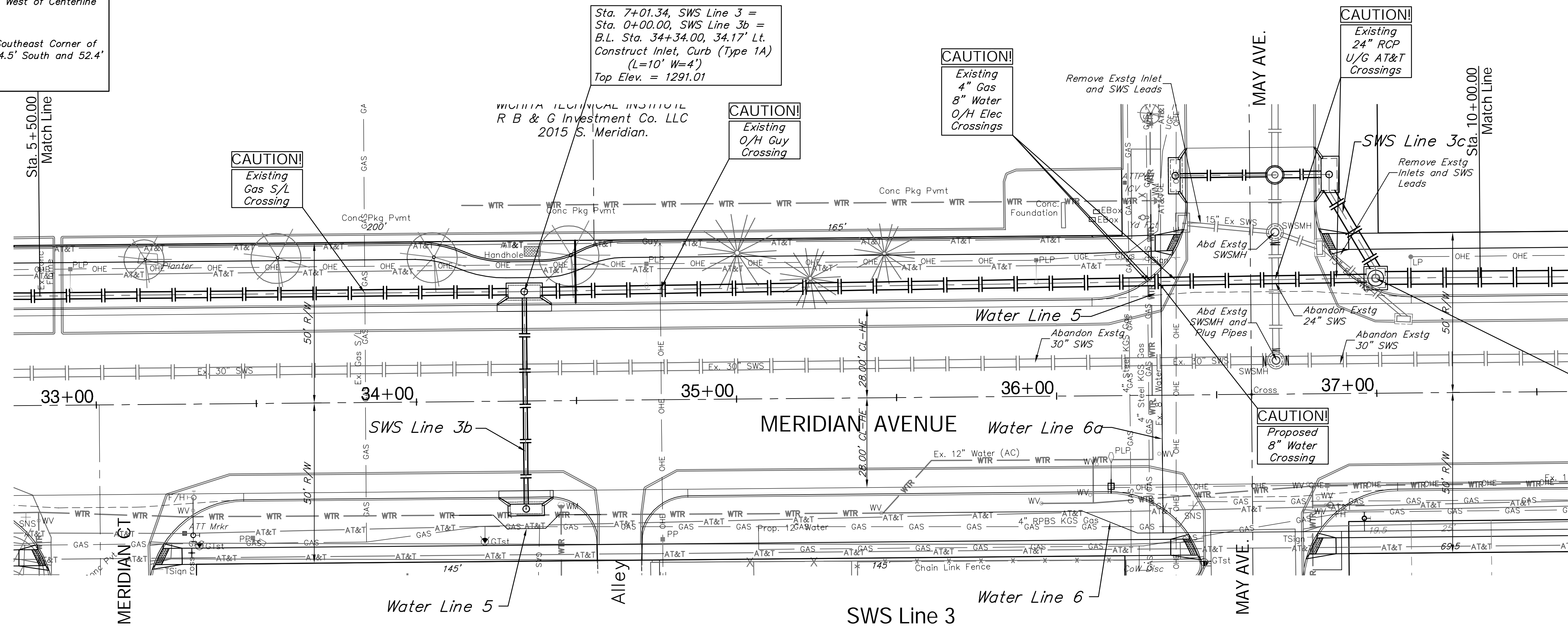
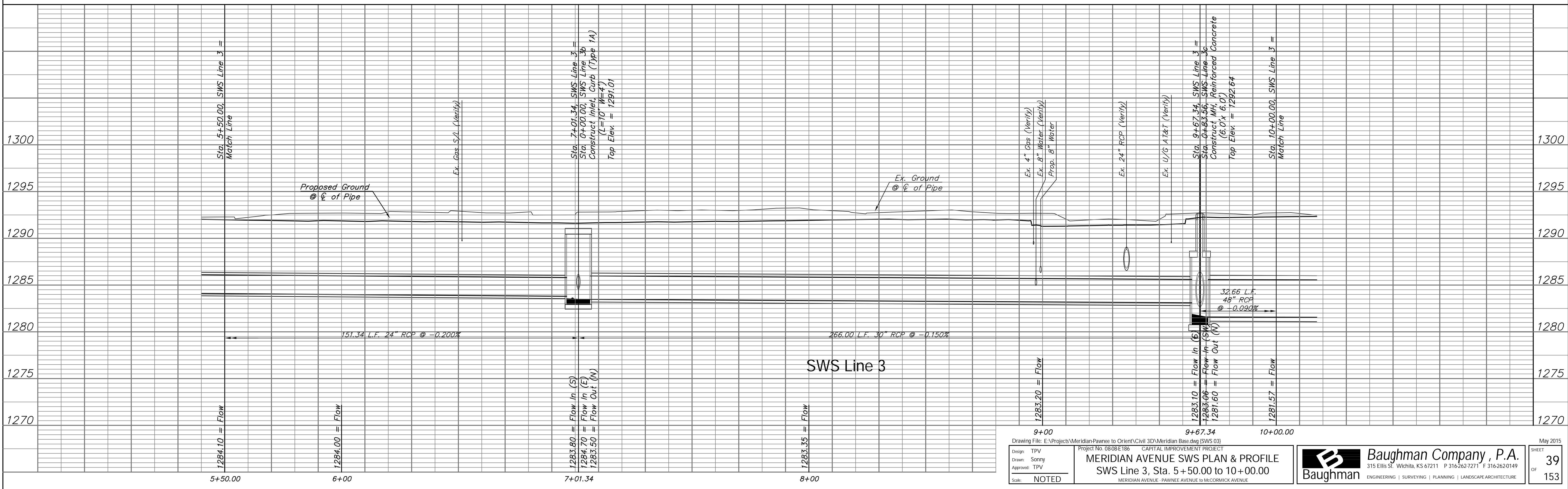


**BENCHMARK:**  
 BM #2 - Chiseled "a" on the Top of Curb on the South Side of May Avenue adjacent to Fire Hydrant, 260'± West of Centerline of Meridian.  
 Elev. = 1292.76 (NAVD 88)  
 BM #3 - City of Wichita Benchmark Disc in the Southeast Corner of the Intersection of Meridian and May, 34.5' South and 52.4' East of the Centerline of Both.  
 Elev. = 1292.75 (NAVD 88)

REGION NO.	STATE	PROJECT NO.	FISCAL YEAR	SHEET NO.	TOTAL SHEETS
7	KANSAS	087 N-0593-01	2015	39	153



Sta. 9+67.34, SWS Line 3 =  
 Sta. 0+83.56, SWS Line 3c =  
 B.L. Sta. 37+00.00, 35.93' Lt.  
 Construct MH, Reinforced Concrete  
 (6.0' x 6.0')  
 Top Elev. = 1292.64



Design: TPV  
 Drawn: Sonny  
 Approved: TPV  
 Scale: NOTED

Project No. 0808E186 CAPITAL IMPROVEMENT PROJECT  
**MERIDIAN AVENUE SWS PLAN & PROFILE**  
 SWS Line 3, Sta. 5+50.00 to 10+00.00  
 MERIDIAN AVENUE - PAWNEE AVENUE to MCCORMICK AVENUE

**Baughman Company, P.A.**  
 315 Ellis St. Wichita, KS 67211 P 316.262.7271 F 316.262.0149  
 ENGINEERING | SURVEYING | PLANNING | LANDSCAPE ARCHITECTURE

May 2015  
 SHEET 39 OF 153