

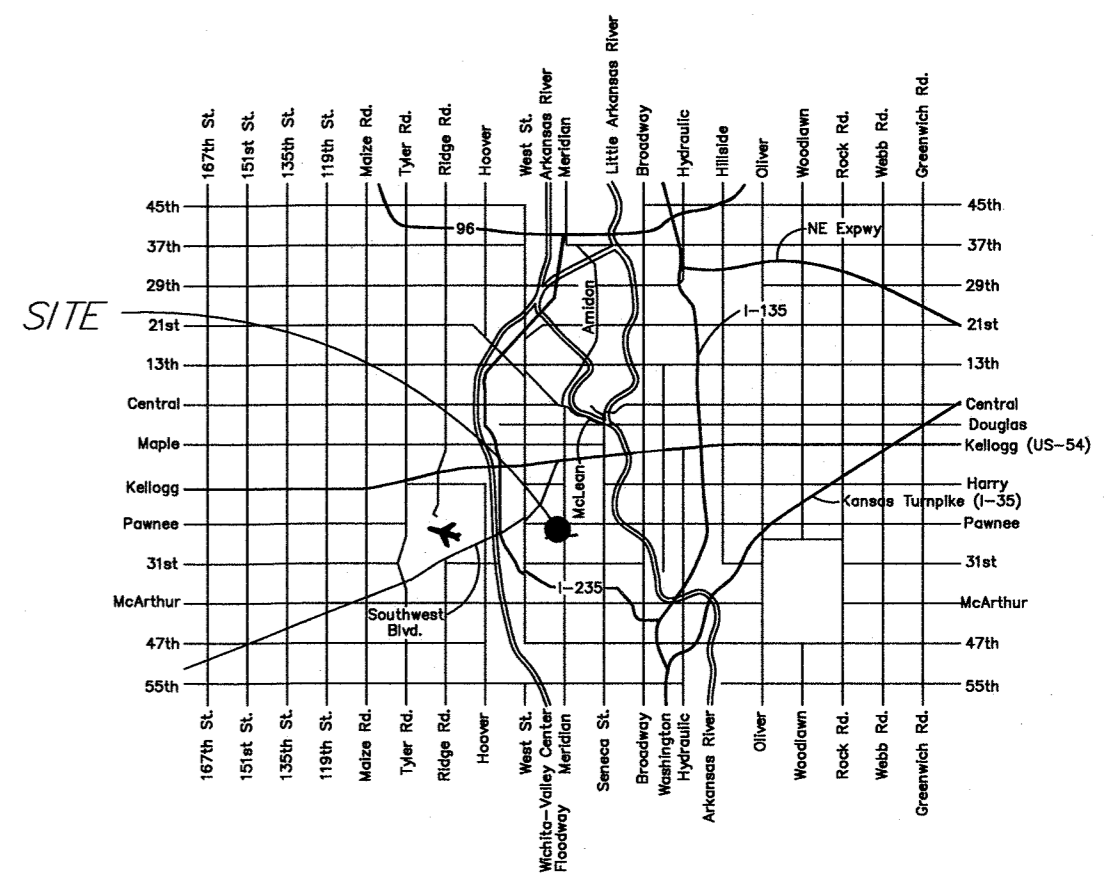
GENERAL NOTES:

- The Contractor shall comply with all applicable safety regulations. All construction shall be completed following current City Standard Specifications and Special Provisions.
- Contractor will be required to provide notice to utility companies a minimum of seventy-two (72) hours prior to any excavation, as follows:  
  
Kansas One-Call  
687-2470  
  
The Contractor must notify the following in case of an emergency:  
  
AT&T  
1-800-246-8464  
Black Hills Energy  
1-800-694-8989  
City of Wichita Water & Sewer  
1-316-219-8921  
City of Wichita Stormwater  
1-316-268-4090  
City of Wichita Traffic  
1-316-268-4034  
Cox Communications  
1-888-249-3530  
Kansas Gas Service  
1-888-482-4950  
Westar Energy  
1-800-544-4857
- Utility service lines, poles, etc. are to be adjusted as necessary by others prior to construction unless the plans specifically call for their adjustment by the Contractor or unless the plans specifically identify a utility to be adjusted by its owner during construction. Existing utilities and their location, as shown on the plans, represent the best information obtainable for design. The Contractor will be required to work around existing utilities within the right-of-way which do not conflict with proposed construction.
- Rubble from the removal of miscellaneous structures and excess excavation which is to be wasted shall be disposed of on sites to be provided by the Contractor. These sites shall be approved by the Engineer as to suitability, appearance and site location. Locations, in the opinion of the Engineer, that will leave an unsightly appearance will not be approved. All disposal sites must be approved by the Kansas Department of Health and Environment. Material either stockpiled or disposed of in a flood plain would require a Kansas State Board of Agriculture permit. Any material dumped in the waters of the United States or wetlands is subject to U.S. Corps. of Engineers permitting regulations. Any material buried or stockpiled beyond approved construction limits would require additional archeological investigations unless buried in a previously approved borrow location.
- Trees and shrubs in public right-of-way which are in direct conflict with proposed new construction shall be removed by the Contractor with the Engineer's approval. Trees and shrubs which are not in direct conflict with proposed new construction shall be saved and protected from damage.
- The Contractor shall give all property owners and/or tenants of developed property abutting the construction of this project a minimum of ten (10) days notice prior to start of construction.
- The Contractor shall be responsible for preserving property irons. The Contractor will be required to re-establish any property irons which are damaged or destroyed by his construction operations. Such irons shall be re-established by a licensed land surveyor in accordance with state laws.

- The Engineering Division shall field locate water valves one time during construction when requested by the Contractor. It shall be the Contractor's responsibility to preserve such field locations during the construction process. Water valves, valve boxes or fire hydrants damaged during construction shall be repaired by Contractor at his own expense. Valve boxes and water meters within the project limits shall be adjusted to match final grades by the contractor.
- The Contractor shall notify the consultant engineer and Tom Mason with the City at 316-268-4574 with the City of Wichita with the anticipated construction start date and notify them of project completion. Staking and inspection for this project will be the responsibility of the Contractor.
- If traffic is impacted by construction, a traffic control plan must be submitted and approved by the City Traffic Engineer, Brian Coon at traffic@wichita.gov before construction can begin. The Contractor shall be responsible for all traffic control measures to facilitate construction. All construction zone markings and signage shall conform to the latest version of the Manual on Uniform Traffic Control Devices (MUTCD) as published by the US Dept. of Transportation, Federal Highway Administration. All costs associated with construction markings and signage shall be the Contractors responsibility.
- All elevations shown are NAVD 88.
- All areas disturbed during construction that will not be under proposed pavement shall be restored to match existing conditions.
- Any sidewalk, drive approach, or street pavement removed to construct project must have a pavement cut permit and be replaced by the City contractor. Permits can be obtained by calling 316-268-4501 or 316-268-4480.
- City maintenance of storm sewer ends at the last structure in the easement or right-of-way.
- A portion of excess excavated material shall be mounded around manholes which extend more than one (1) foot above the existing ground. Such mound shall be constructed with new development a six (6) foot diameter flat top with 4 to 1 side slopes down to the original ground. The elevation of the flat top of the mound shall be 0.4 foot below the top to the manhole.
- Geotechnical report available upon request.
- Contractor shall limit the extent of trench openings overnight and weekends to less than 50 feet.
- The inspecting firm shall submit to the City Stormwater Maintenance Division a digital copy of the CCTV inspection of the conduits and structures following construction. The digital file formation shall be compatible with the City input template. A copy of the template is available upon request at 316-268-4090.
- The Contractor shall protect from damage and support existing utilities through construction as approved by the utility owner and the Engineer at the contractors expense.

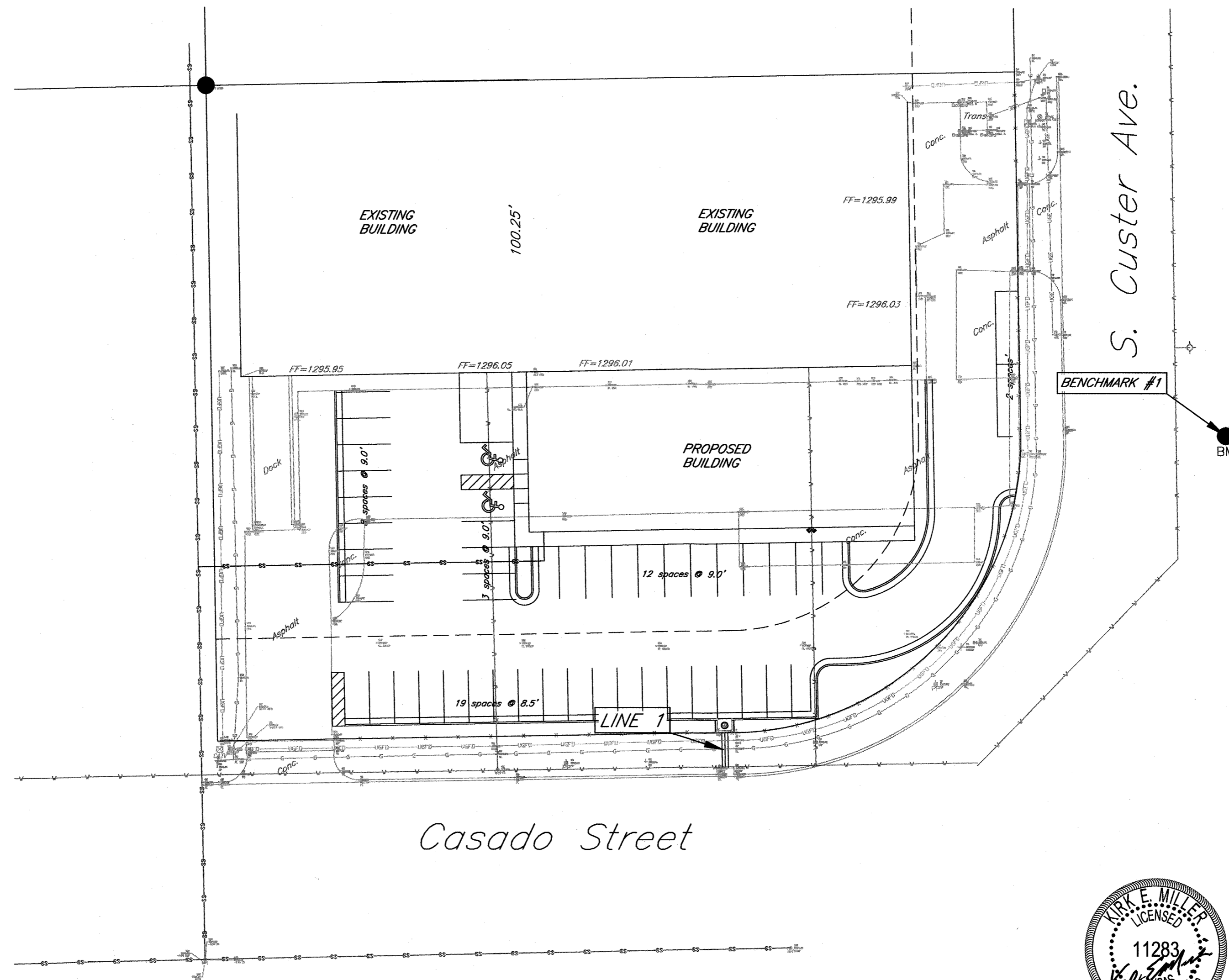
AS BUILTS	
Contractor: Dondlinger & Sons Construction Co, Inc 11/20/2017	Project Inspector: Larry Gann <b>KEMILLER</b> ENGINEERING PA 117 E. Lewis, Wichita, KS 67202 (316)264-0242

**STORM SEWER IMPROVEMENTS**  
to serve  
**Center Industries**  
**2653 S. Custer Ave.**  
**CITY OF WICHITA, KANSAS**  
Gary Janzen, P.E., City Engineer  
0484 PPD (133119)



Vicinity Map  
Index of Sheets:

1.0	Cover Sheet
2.0	Grading Plan
3.0	ERU Plan
4.0	Line 1 Plan and Profile
4.1	Curb Inlet Detail
5.0	Erosion Plan
6.0-6.4	Erosion Control BMP Details (attached or available on City's website)
7.0	Plat



**Stormwater Certification:**  
ReDevelopment

These construction plans were prepared in accordance with the current Stormwater Management Regulations as set forth in the City of Wichita's Stormwater Management Ordinance 16.32 and the policies/guidelines presented in the Wichita/Sedgwick County Stormwater Manual.

Disturbed Area: 26,655 sq. ft.  
Water Quality Treatment: N/A  
Downstream Channel Protection: N/A  
Detention: Not Required  
The BMP used for this development is Off-site water quality credits.

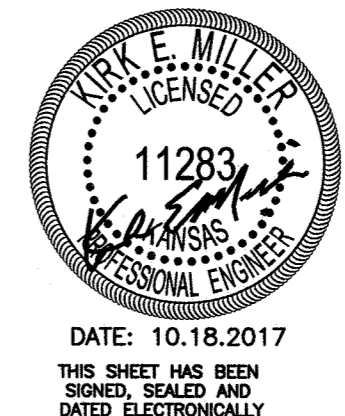
APPROVED AS NOTED  
BY WICHITA PUBLIC WORKS ENGINEERING  
AND STORMWATER DIVISION

Engineering *Reuben Dill* 11/17  
Stormwater *Joe Hinkle PE* 11/17

**NOTE TO CONTRACTORS**

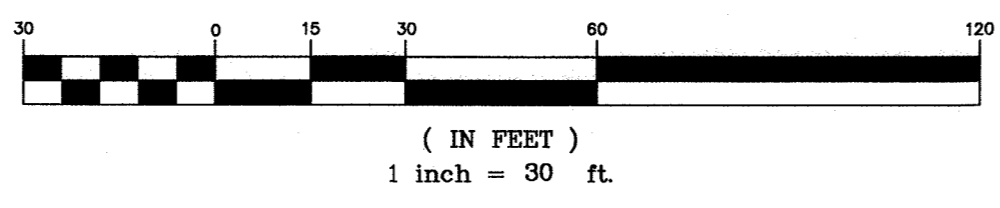
Inspection and testing for this project is to be provided by a Licensed Consulting Engineering Firm under contract with the Owner/Developer. Said inspection to be in accordance with the City of Wichita standard construction engineering practices and certified by a Licensed Professional Engineer in the state of Kansas. No work shall be performed by the Contractor without such inspection nor shall any work be commenced without written authorization by City Engineering. All Construction and Materials shall comply with the City of Wichita Specifications and Standards and Special Provisions (on file and available at Wichita.gov).

An approved copy of these plans signed by City staff are required on-site.



Benchmark:

- #1 "X" Chiseled on Top of Curb  
Elev. = 1294.29 NAVD88
- #2 Top of Lid, SS Mh in Casado St.  
Elev. = 1294.48 NAVD88



**October 2017**

**KEMILLER**  
ENGINEERING PA  
117 E. Lewis, Wichita, KS 67202 (316)264-0242

Grading Legend:

- EP = Edge of Pavement
- EL = Elevation
- FL = Flow Line
- TC = Top of Curb
- SW = Top of Sidewalk
- TP = Top of Pavement
- FF = Finish Floor
- = Flow Arrows
- ↔ = Valley Flowline



Benchmark:  
 1. Top of MH Rim Approx. 2.5' SE  
 of N. Property line and Approx.  
 151.5' W of the E. Property Line.  
 Elevation=1340.42 (NAVD 88)

CUSTER AVE.

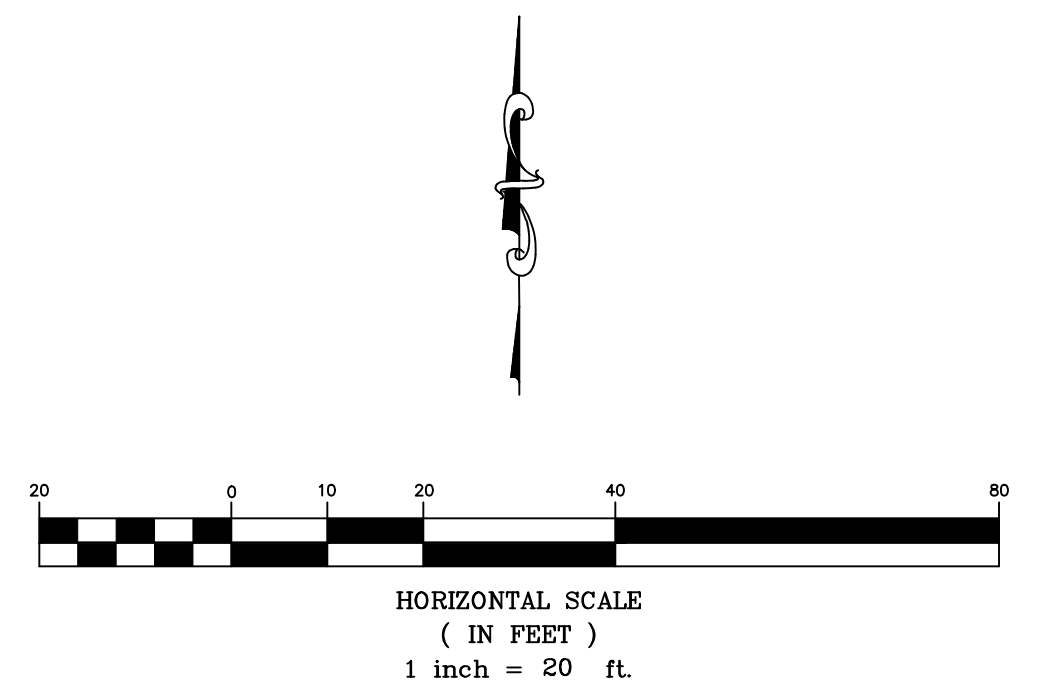
CASADO ST.

**AS BUILTS**

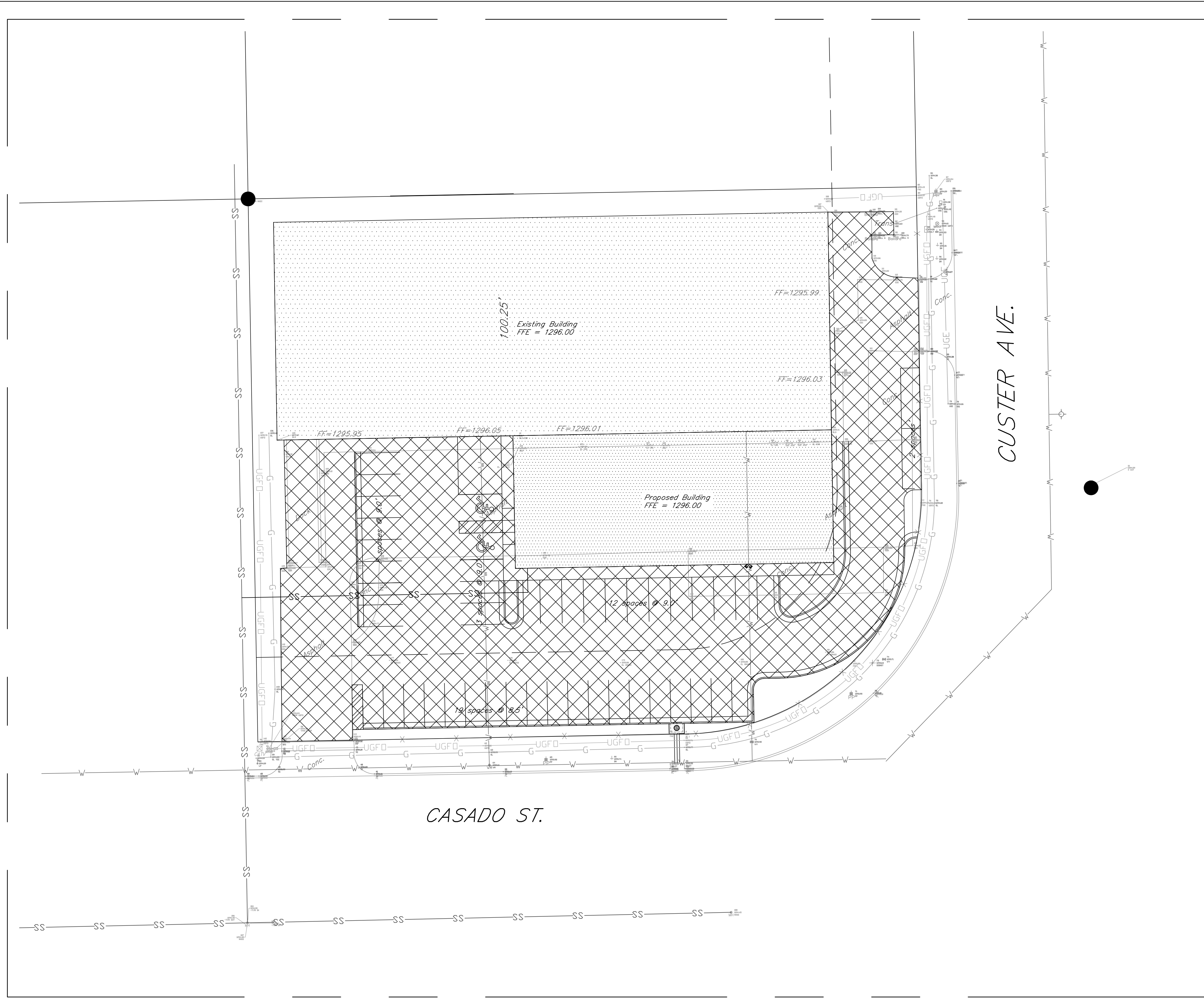
**KEMILLER**  
ENGINEERING PA

117 E. Lewis,  
Wichita, KS 67202

(316)264-0242

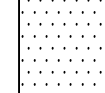
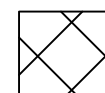


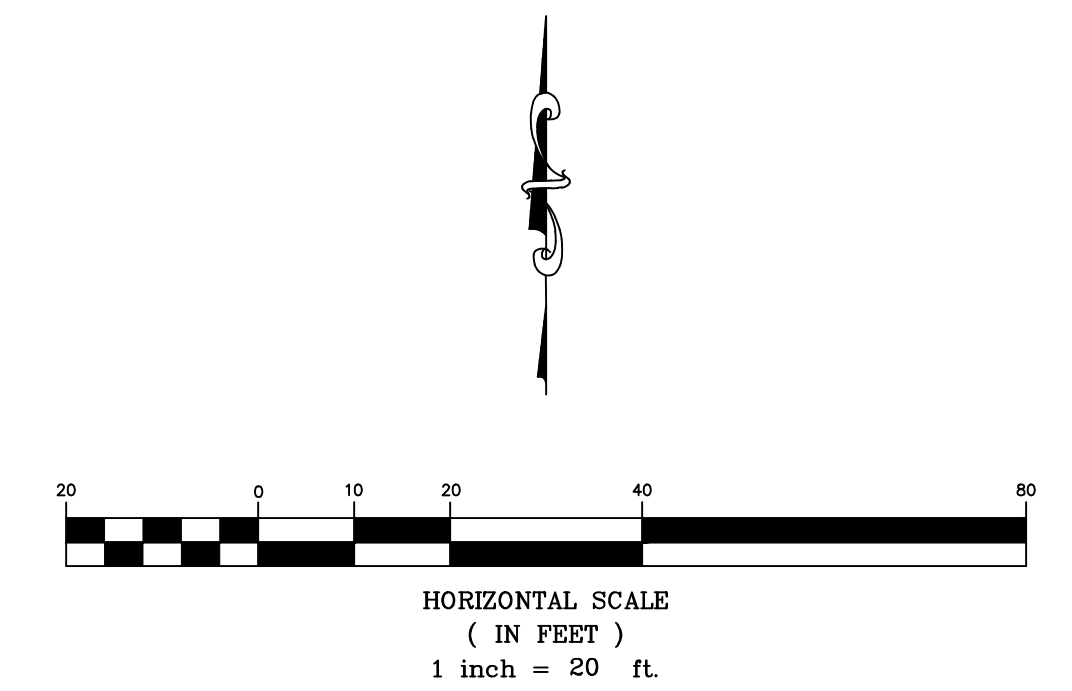
Center Industries Grading Plan Wichita, Kansas			
PROJECT NUMBER			
<b>KEMILLER</b> ENGINEERING PA <small>117 E. Lewis, Wichita, KS 67202 (316)264-0242</small>	KEM NO. 17075	FILE	DATE 10/2017
	DESIGN KM	DRAWN ME	REVISED
			<b>SHEET</b> <b>2.0</b>




ERU Calculations:

Ex. Impervious Area =	40,407.47 sq. ft.
Total Lot Area =	60,161.08 sq. ft.
Proposed Building Area =	7,260.00 sq. ft.
Proposed Parking, Sidewalks, and Other Impervious Areas =	16,582.20 sq. ft.
Total Impervious Area = (Post Construction)	53,308.67 sq. ft.
Net Increase in Impervious Area =	12,901.20 sq. ft.

- Hatching Legend:
-  Building Area
  -  Parking, Sidewalks, and Other Impervious Area



Center Industries  
**ERU Plan**  
Wichita, Kansas

	PROJECT NUMBER			<b>3</b>
	KEM. NO. 17075	FILE	DATE 10/2017	
117 E. Lewis, Wichita, KS 67202 (316)264-0242	DESIGN KM	DRAWN AHS	REVISED	

Casado Street

Sta. 0+00.00 Line 1  
Connect to existing curb inlet  
15" FL = 1290.15 (N)  
Ex. 18" FL = 1289.90 (S)  
N=1670759.00, E=1637124.34

!!Caution!!  
Fiber Optic &  
Gas Line

Proposed WL  
Adjustment  
\*See Profile

Existing 8" Waterline

35' Building Setback

Sta. 0+15.00 Line 1  
Install Type 1 Curb Inlet  
Top = 1293.90  
15" FL(out) = 1290.30 (S)  
N=1670775.60, E=1637124.03

15.00 LF 15" RCP @ 0.40%

3 spaces @ 9.0'

spaces @ 9.0'


Proposed Building

Existing Building

100.25'

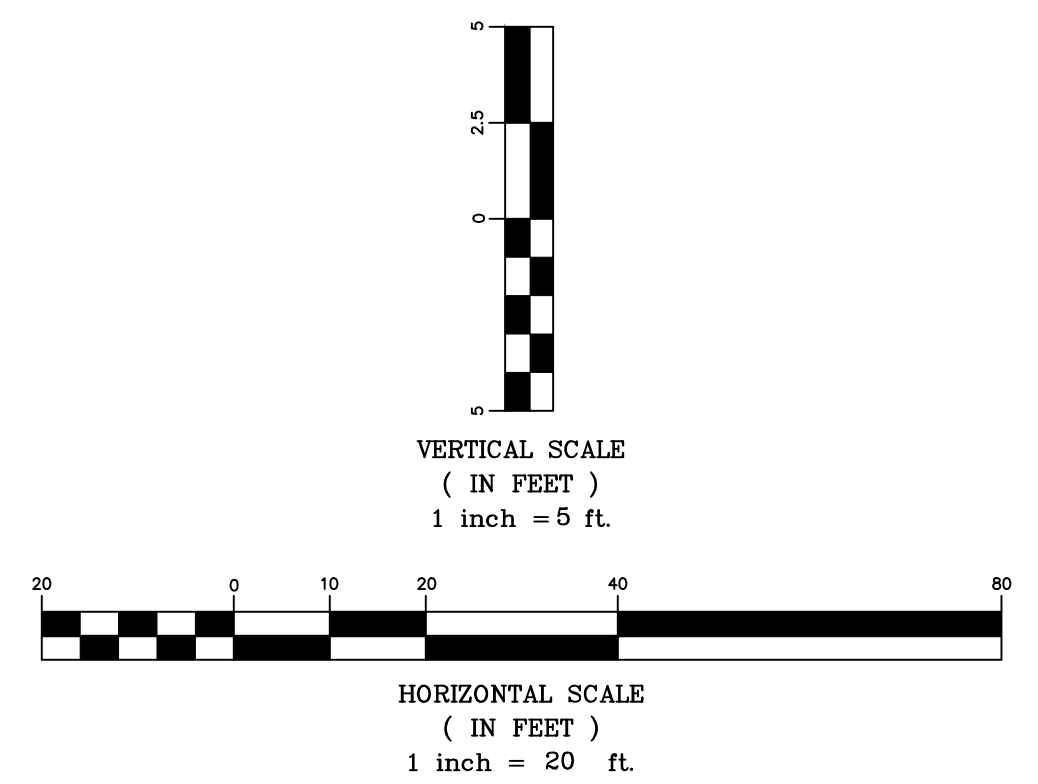
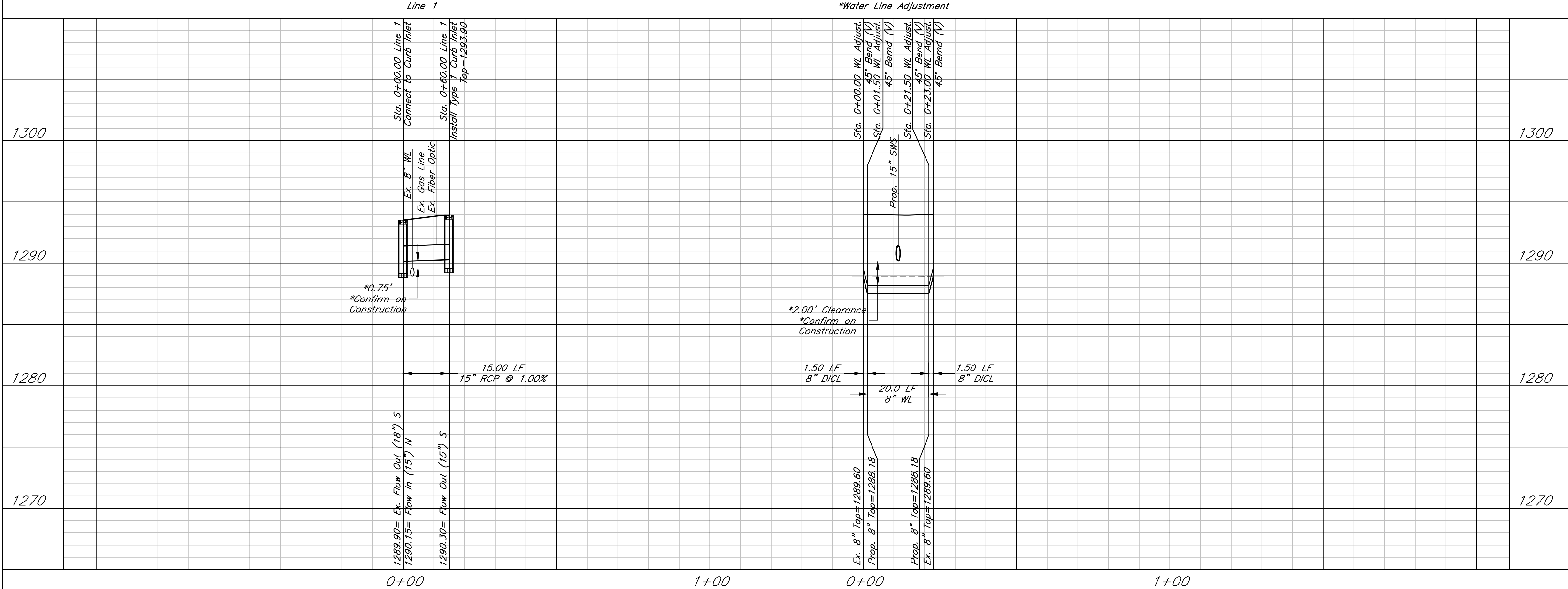
35' Building Setback

**AS BUILTS**



**KEMILLER**  
ENGINEERING PA

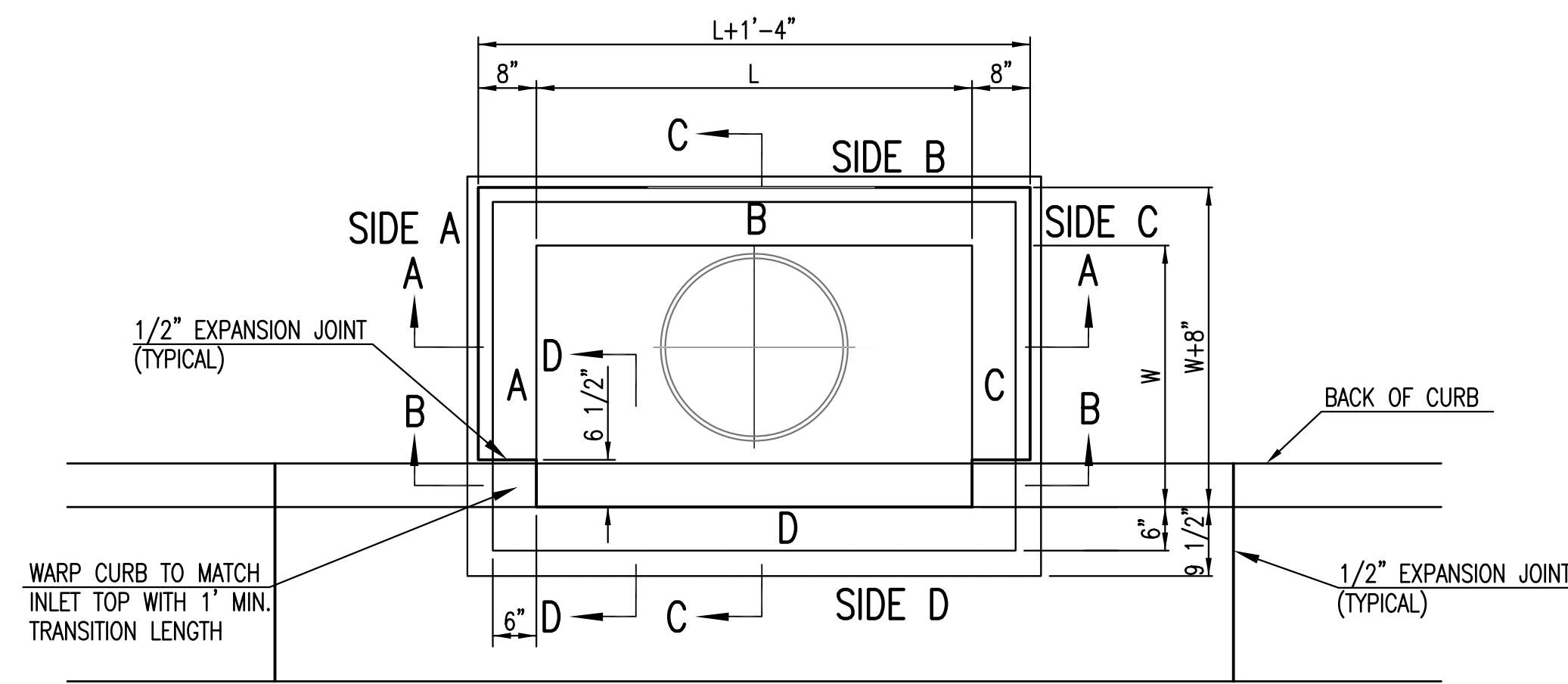
117 E. Lewis,  
Wichita, KS 67202 (316)264-0242



Center Industries  
**Plan and Profile**  
Wichita, Kansas

PROJECT NUMBER  
0848 PPD (133119)

KEMILLER ENGINEERING PA 117 E. Lewis, Wichita, KS 67202 (316)264-0242	KEM NO. 17075	FILE	DATE 10/2017	SHEET <b>4.0</b>
	DESIGN KM	DRAWN ME	REVISED	



TOP VIEW

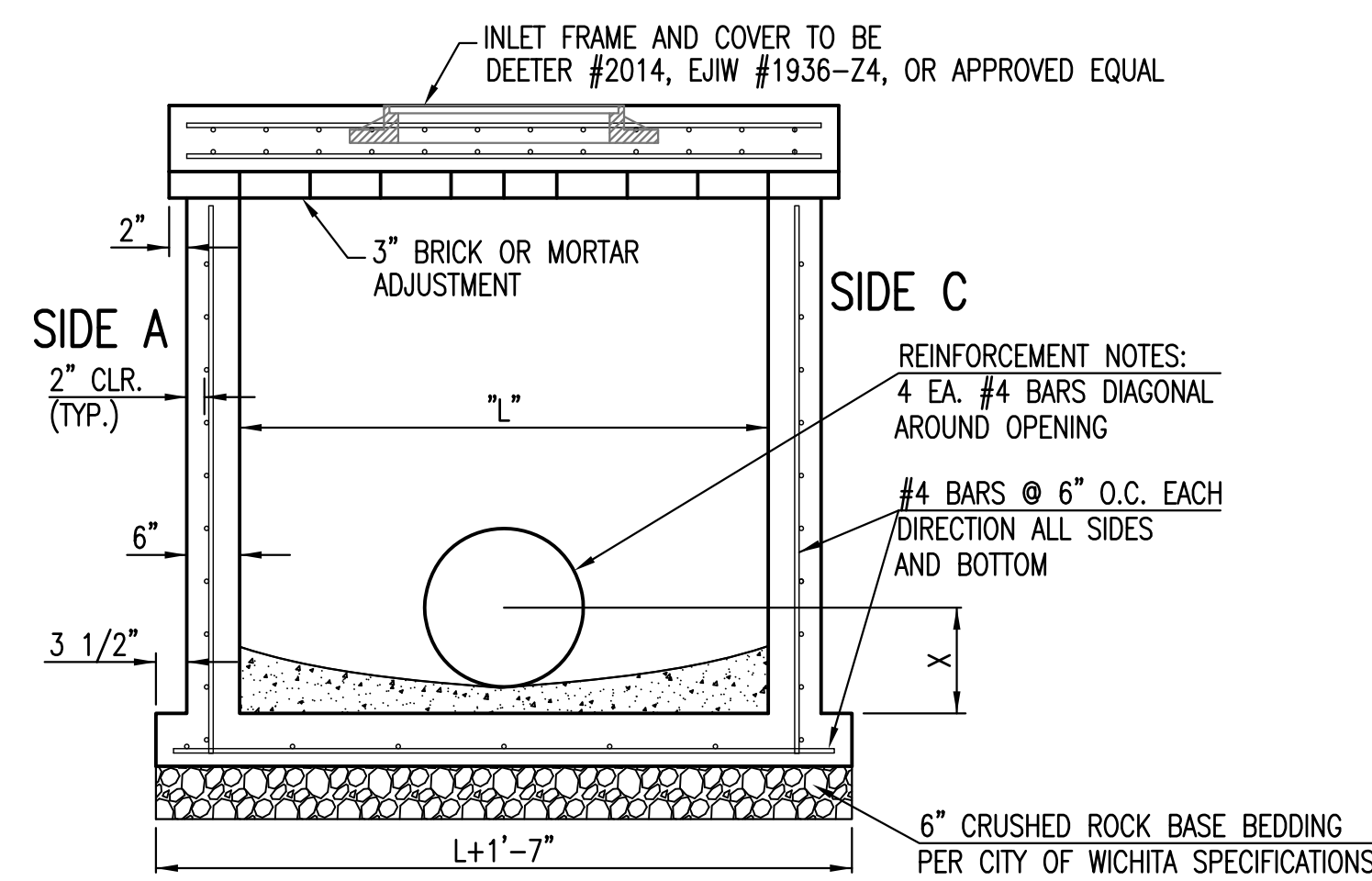
BAR SCHEDULE		
INLET OPENING	B1 BARS	SPACING
5'-0"	#4	4"
10'-0"	#6	3.5"

W	PRE-CAST TOP SIZE			PIPE DIA.**
	WIDTH	LENGTH	TOP	
3'-0"	W+8"	L+1'-4"	7 1/2"	21" & SMALLER
4'-0"	W+8"	L+1'-4"	7 1/2"	24" & 30"
5'-0"	W+8"	L+1'-4"	7 1/2"	36" & 42"
6'-0"	W+8"	L+1'-4"	7 1/2"	48" & 54"
7'-0"	W+8"	L+1'-4"	7 1/2"	60" & 66"

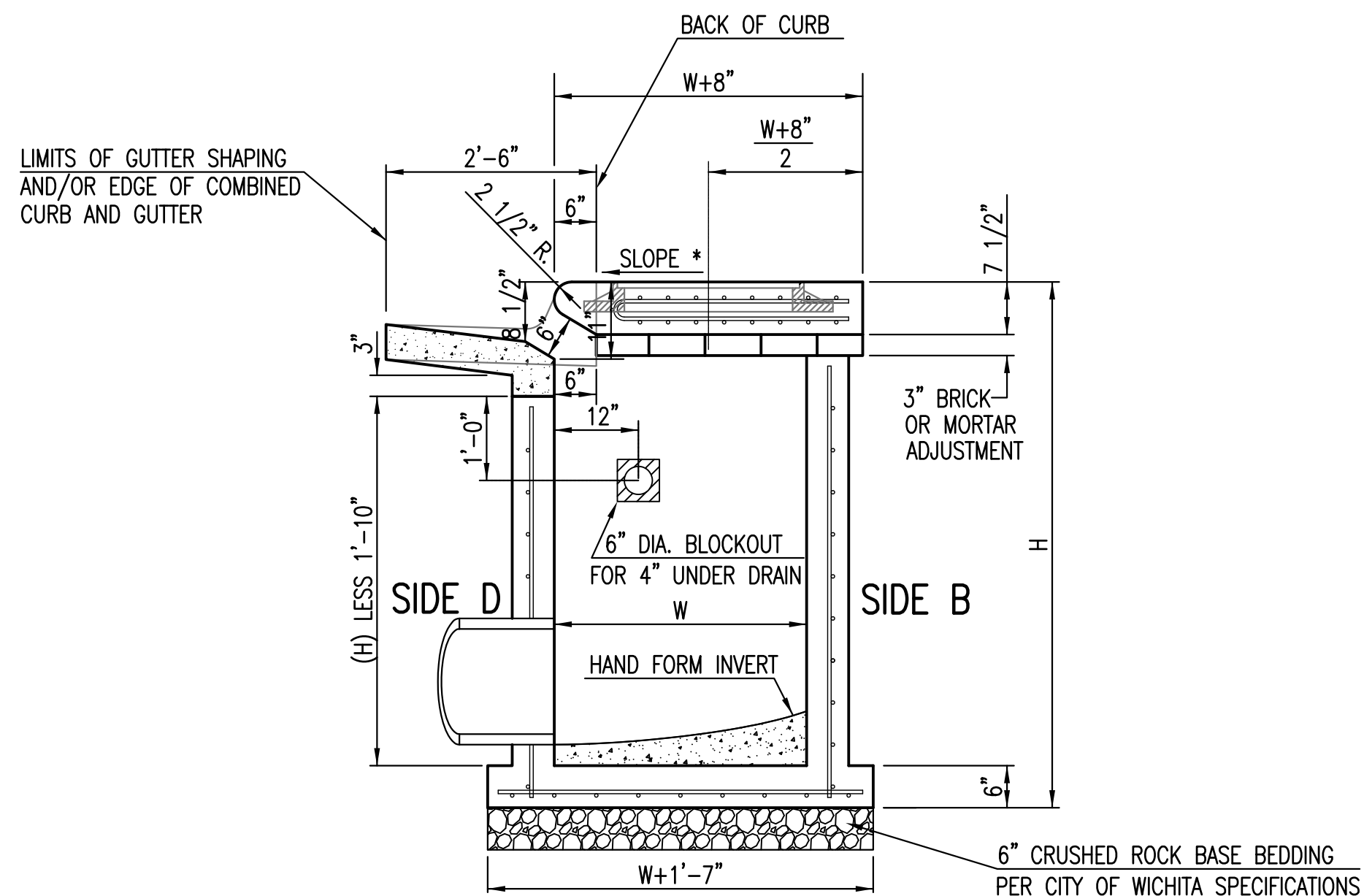
\*\* FOR PIPES PERPENDICULAR TO INLET WALL

GENERAL NOTES

1. CONCRETE TOPS TO BE INSTALLED ON THIN MORTAR CUSHION TO INSURE FULL SUPPORT ALONG BRICK. CONCRETE TOPS MAY BE CAST IN PLACE OR PRECAST. CONCRETE USED FOR INLET CONSTRUCTION SHALL CONFORM TO CITY OF WICHITA SPECIFICATIONS FOR CONCRETE PAVEMENT MIX.
2. CONTRACTOR SHALL HAVE THE OPTION OF CONSTRUCTING 8" BRICK MASONRY WALLS BETWEEN THE CONCRETE INLET BASE AND TOP OF THIS INLET WHEN W=5'-0" AND H=7'-0" OR LESS.
3. INLET INVERT SHALL BE SHAPED WITH 8 SACK SAND MIX CONCRETE TO CREATE FLOW CHANNELS AND TO INCREASE HYDRAULIC EFFICIENCY SUCH THAT THE INLET WILL BE SELF CLEANING BETWEEN ALL INLET AND/OR OUTLET PIPES.
4. THE ENDS OF ALL PIPES INSTALLED IN INLETS SHALL BE CUT OFF FLUSH WITH THE INSIDE FACE OF THE INLET WALL.
5. INLET FRAME AND COVER TO BE DEETER #2014, EJIW #1936 Z4, OR APPROVED EQUAL, SEE SW-303.
6. CONTRACTOR SHALL REMOVE LIFTING HOOKS AFTER INSTALLATION. RECESSES IN INLET WALL SHALL BE GROUDED FLUSH TO THE INLET WALL WITH HYDRAULIC CEMENT AFTER THE INLET IS IN PLACE. LIFTING HOLES THRU THE INLET WALL WILL NOT BE ACCEPTED.

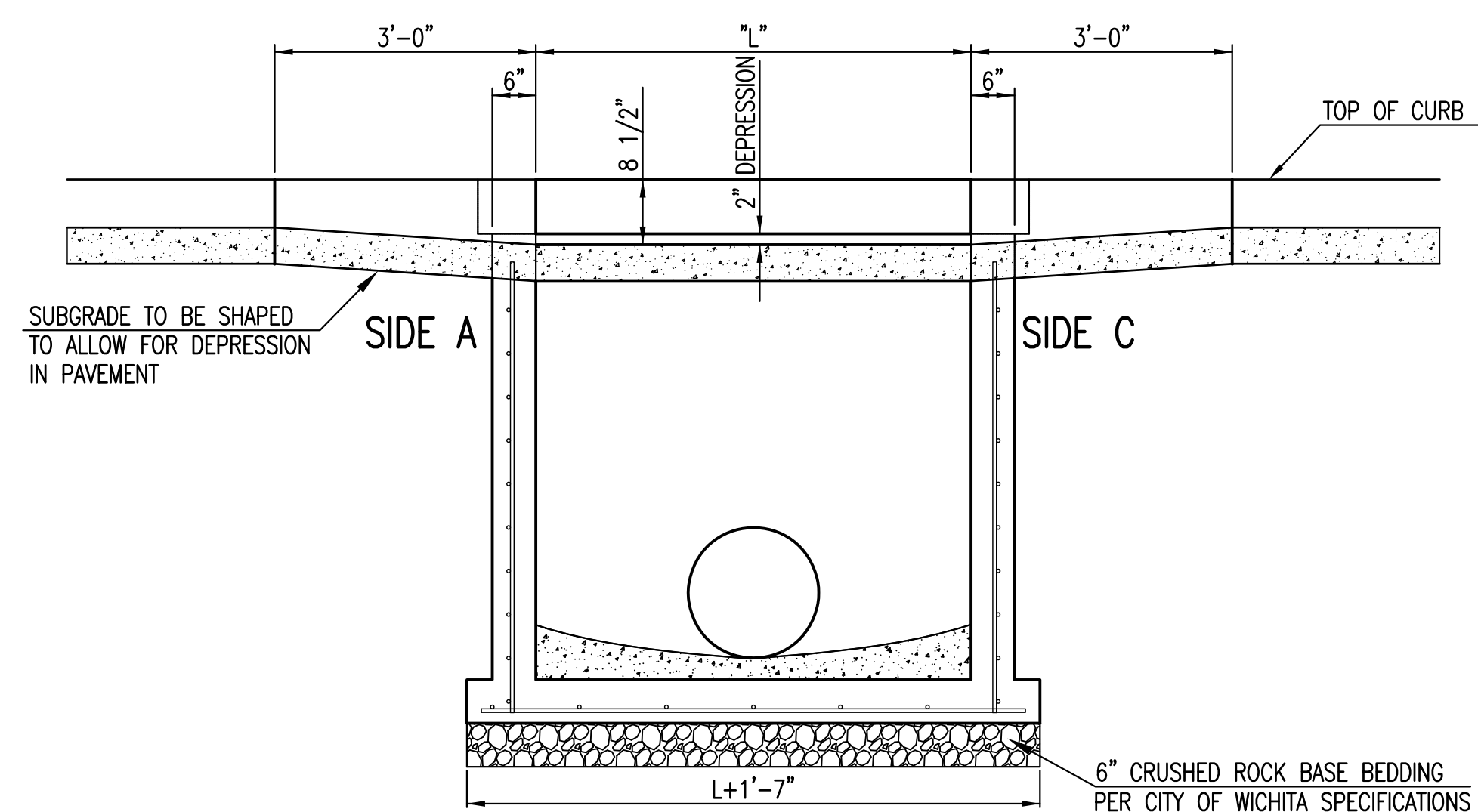
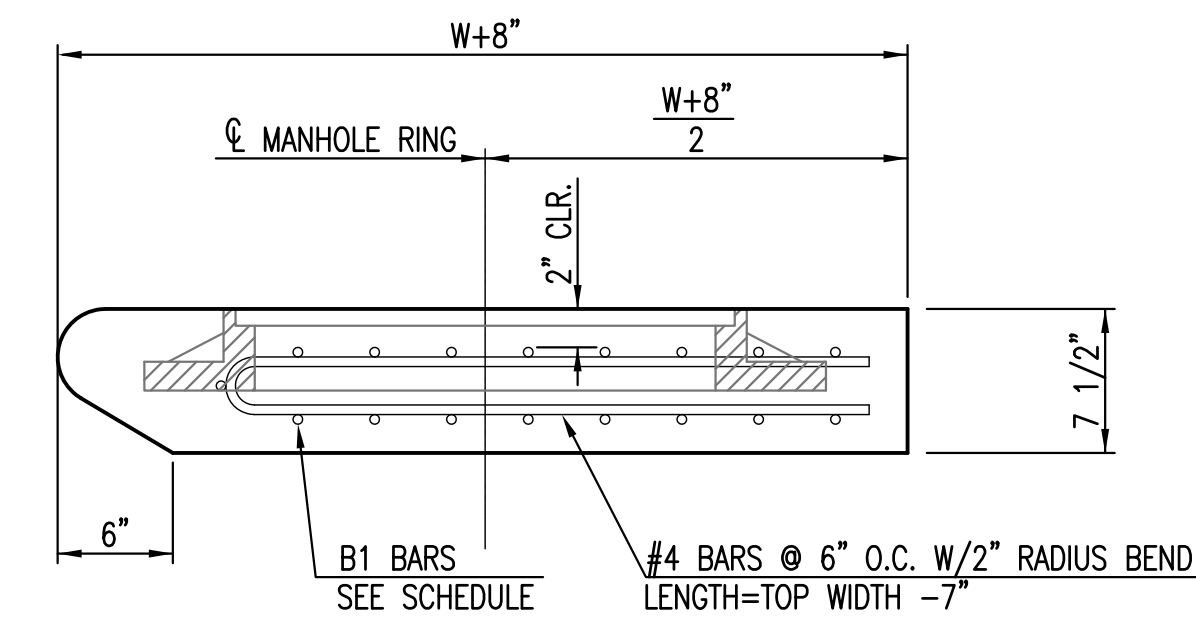


SECTION "A-A"

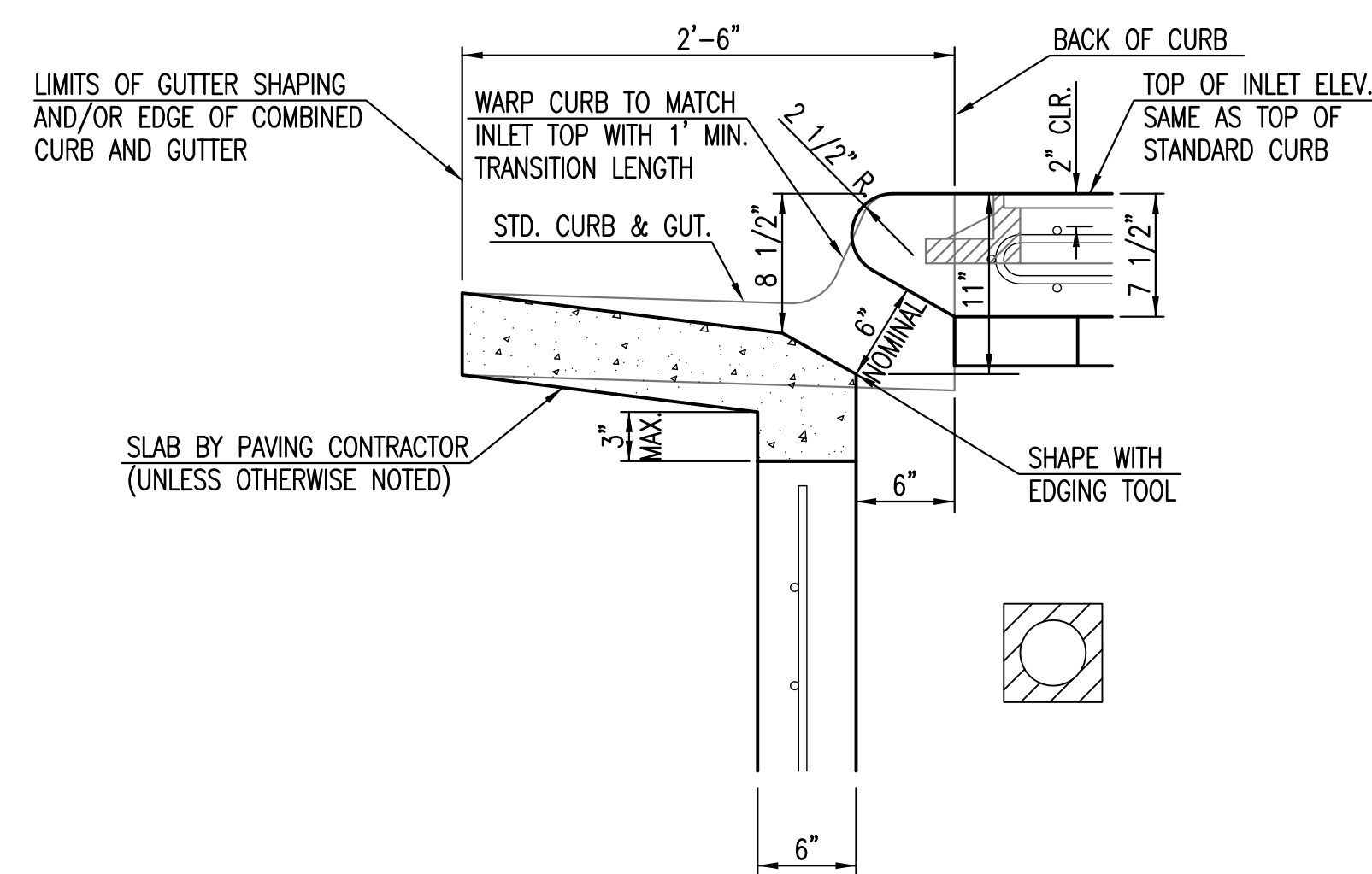


SECTION "C-C"

NOTES:  
\* SLOPE OF INLET TOP TO MATCH SIDEWALK OR PARKING SLOPES WITHIN LIMITS INDICATED.



SECTION "B-B"



SECTION "D-D"






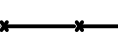

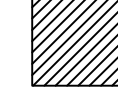
<b>STANDARD TYPE 1 CURB INLET</b>		
<b>5'-0" OR 10'-0" OPENING</b>		
CITY ENGINEER <b>GARY JANZEN, P.E.</b>		
PROJECT NUMBER	OCA NUMBER	DATE 11/2010
CITY ENGINEER'S OFFICE CITY HALL - SEVENTH FLOOR 455 NORTH MAIN STREET WICHITA, KANSAS 67202-1620 (316) 268-4501		SHEET <b>4.1</b>

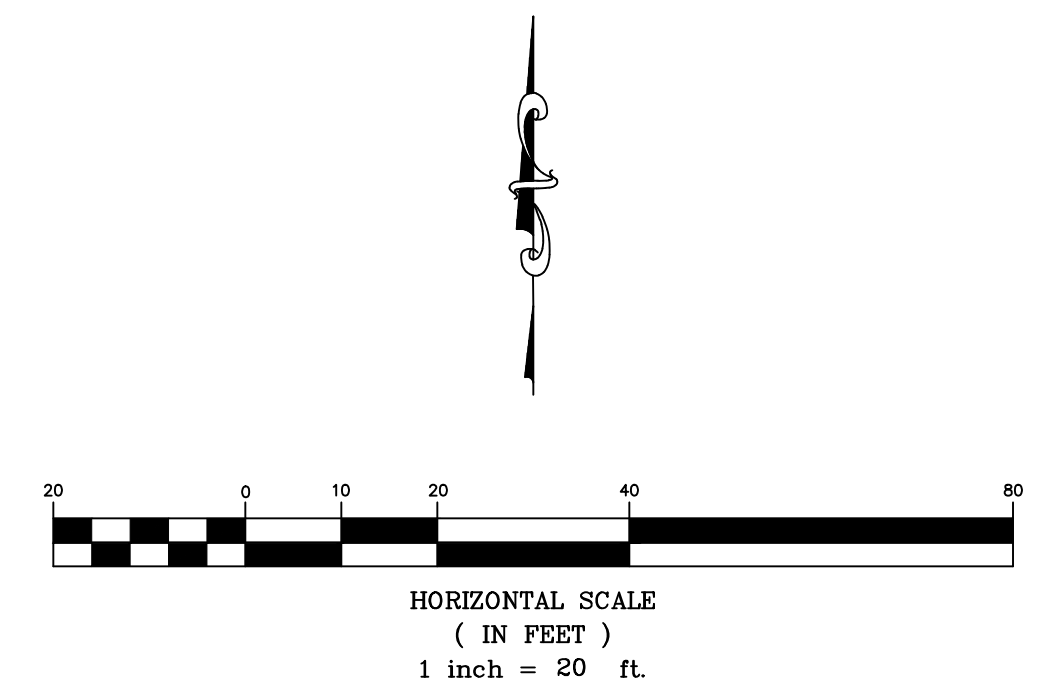
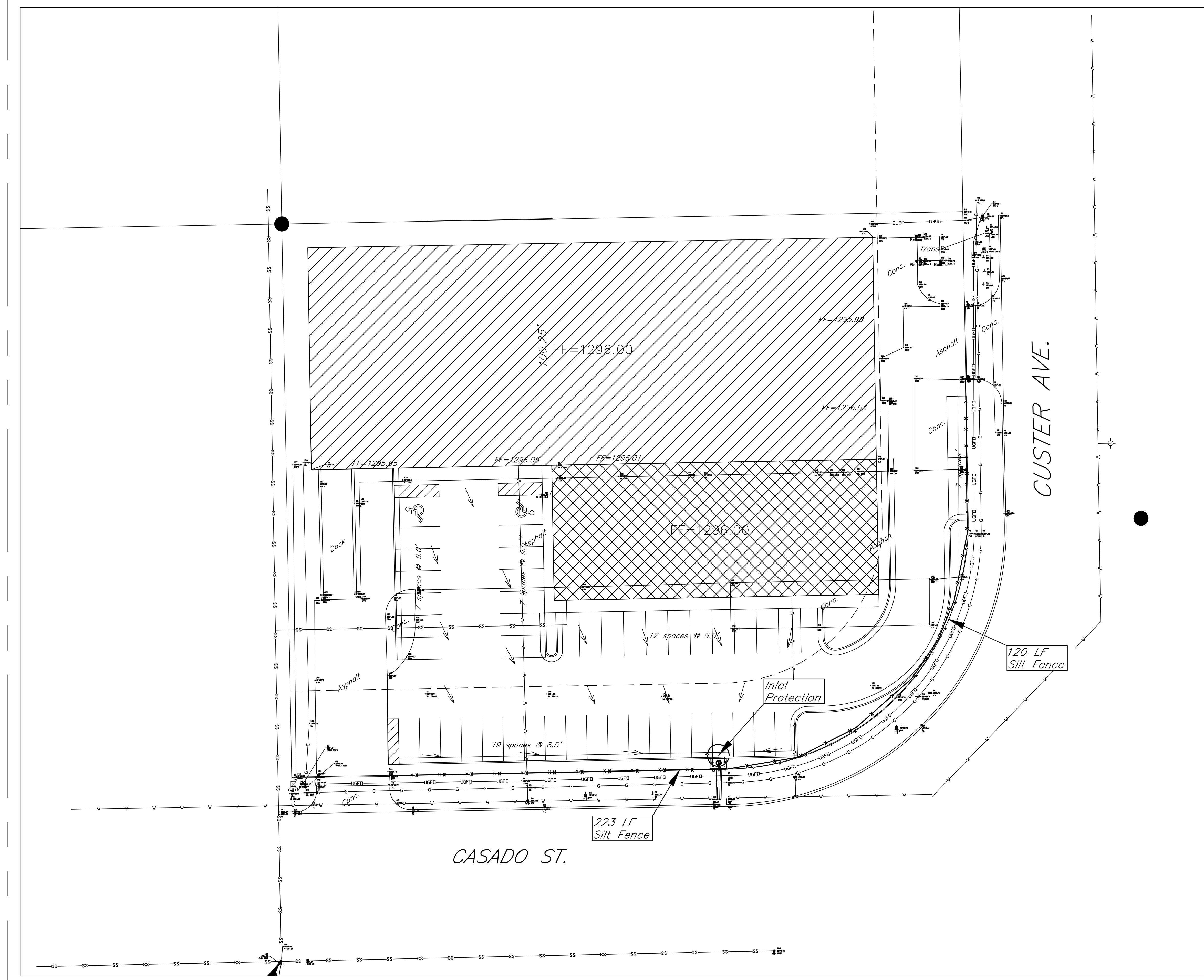
# Erosion Control Plan

**General Notes:**

1. The BMP's shown on this sheet are considered minimum standards. Whenever sediment enters the streets, storm sewers, ditches, or ponds, contractor will install additional BMP's, as needed, to correct the problem.
2. The soil erosion BMP's shown hereon must be in place at all times during construction until such time as the site is re-established with paving or grass.
3. Back of curb protection can include hay bale, silt fence, Curlex barrier, or approved alternate as shown on BMP standard details. This BMP must remain in place until the area between the curb and right-of-way line has been permanently stabilized.
4. The General Contractor is responsible for the installation and maintenance per the prevention maintenance plan.
5. Concrete trucks will be permitted to wash out only at approved locations, then maintain and clean up as conditions require, by contractor. No hazardous materials are expected to be encountered. Any spills (diesel, fuel, oil, etc.) will be cleaned up and removed immediately. Portable toilets will be supplied and maintained at various sites along the project. Disposal of sewage will be handled by a contracting firm specializing in this activity.
6. The above mentioned storm water prevention methods will be monitored daily and maintained as required. A weekly erosion control log will be posted in the job trailer onsite, and updated weekly. Site inspections are required within 24 hours after a precipitation event of 0.5" or greater.

**LEGEND:**

- Flow Direction
-  Inlet Protection - to be provided at all inlets subject to silt laden runoff.
-  Ditch Check
-  Temporary Seeding and Mating.
-  Silt Fence or Hay Bale Barrier - to be installed along property lines where runoff from construction site can run onto other properties.
-  Stabilized Construction Entrance - to be used at all locations where vehicles or equipment enter or exit property.
-  Back of Curb Protection - to be installed whenever curb is backfilled to less than 3 inches from top and disturbed earth exists adjacent thereto. (See City Standard Details.)



Center Industries  
**Erosion Control Plan**  
 Wichita, Kansas

 117 E. Lewis, Wichita, KS 67202 (316)264-0242	PROJECT NUMBER		
	KEM NO. 17075	FILE	DATE 10/2017
DESIGN KM	DRAWN ME	REVISED	

