

GENERAL NOTES:

- The Contractor shall comply with all applicable safety regulations. All construction shall be completed following current City Standard Specifications and Special Provisions.
- Contractor will be required to provide notice to utility companies a minimum of seventy-two (72) hours prior to any excavation, as follows:
Kansas One-Call 687-2470
The Contractor must notify the following in case of an emergency:
AT&T 1-800-246-8464
Black Hills Energy 1-800-694-8989
City of Wichita Water & Sewer 1-316-219-8921
City of Wichita Stormwater 1-316-268-4090
City of Wichita Traffic 1-316-268-4034
Car Communications 1-888-249-3530
Kansas Gas Service 1-888-482-4950
Westar Energy 1-800-544-4857
- Utility service lines, poles, etc. are to be adjusted as necessary by others prior to construction unless the plans specifically call for their adjustment by the Contractor or unless the plans specifically identify a utility to be adjusted by its owner during construction. Existing utilities and their location, as shown on the plans, represent the best information obtainable for design. The Contractor will be required to work around existing utilities within the right-of-way which do not conflict with proposed construction.
- Rubble from the removal of miscellaneous structures and excess excavation which is to be wasted shall be disposed of on sites to be provided by the Contractor. These sites shall be approved by the Engineer as to suitability, appearance and site location. Locations, in the opinion of the Engineer, that will leave an unsightly appearance will not be approved. All disposal sites must be approved by the Kansas Department of Health and Environment. Material either stockpiled or disposed of in a flood plain will require a Kansas State Board of Agriculture permit. Any material dumped in waters of the United States or wetlands is subject to U.S. Corps. of Engineers permitting regulations. Any material buried or stockpiled beyond approved construction limits will require additional archaeological investigations unless buried in a previously approved borrow location.
- Trees and shrubs in public right-of-way which are in direct conflict with proposed new construction shall be removed by the Contractor with the City Engineer's approval. Trees and shrubs which are not in direct conflict with proposed new construction shall be saved and protected from damage.
- The Contractor shall give all property owners and/or tenants of developed property abutting the construction of this project a minimum of ten (10) days notice prior to start of construction.
- The Contractor shall be responsible for preserving property irons. The Contractor will be required to re-establish any property irons which are damaged or destroyed by his construction operations. Such irons shall be re-established by a licensed land surveyor in accordance with state laws.
- The Engineering Division shall field locate water valves one time during construction when requested by the Contractor. It shall be the Contractor's responsibility to preserve such field locations during the construction process. Water valves, valve boxes or fire hydrants damaged during construction shall be repaired by Contractor at his own expense. Valve boxes and water meters within the project limits shall be adjusted to match final grades by the contractor.
- The Contractor shall notify the consultant engineer and Tom Mason at 316-268-4574 with the City of Wichita with the anticipated construction start date and notify them of project completion. Staking and inspection for this project will be the responsibility of the Contractor.
- If traffic will be impacted by construction, a traffic control plan must be submitted and approved by the City Traffic Engineer, Brian Coon at traffic@wichita.gov before construction can begin. The Contractor shall be responsible for all traffic control measures to facilitate construction. All construction zone markings and signage shall conform to the latest version of the Manual on Uniform Traffic Control Devices (MUTCD) as published by the US Dept. of Transportation, Federal Highway Administration. All costs associated with construction markings and signage shall be the Contractors responsibility.
- All elevations shown are NAVD 88.
- All areas disturbed during construction that will not be under proposed pavement shall be restored to match existing conditions.
- Any sidewalk, drive approach, curb, or street pavement removed to construct project must have a pavement cut permit and be replaced by the City contractor. Permits can be obtained by calling 316-268-4501 or 316-268-4480.
- All applicable fees (tap, equity, in lieu of & main benefit) must be paid before any work on this project can commence.
- City maintenance of water mains ends at right-of-way or easement line or within two feet of vault.
- Opening and closing of water valves shall be done slowly to prevent damage to the water distribution system from water hammer. All valves closed by the contractor must be reopened as new construction permits. The project inspector must ascertain that any valve closed by the Contractor is reopened. The contractor will be permitted to operate water valves only when the project inspector assigned to the project is present.
- The Contractor shall lay a Tracer Wire and Set Test Stations along all water pipe installed in accordance with City Specifications and Tracer Wire Detail on detail sheet WL-101, cost is subsidiary to pipe installation.
- The contractor shall provide materials for temporary blowoff of waterlines. Connections to the existing waterline(s) shall be made with clean, swabbed pipe and flushed upon completion of tie-ins.
- Requests for short term water interruptions shall be made to the City Water Distribution Division and will be subject to their approval. The Contractor shall give written notice to any property owner, business, and/or tenants that will have water service interrupted at least 5 days in advance. Such notifications should indicate the time and date that the water will be turned off and when the service will be restored. No business, property owner, and/or tenants shall be without water service for more than 8 hours. Proposed tie in locations which will affect water service to property owners shall be preformed during non-peak hours.
- The Contractor must schedule the connections to the existing main with the City such that there is a minimum disruption of service. Connections shall be made during periods of low water usage. The Contractor shall submit his proposed schedule for completing work for City approval at least 10 days prior to beginning construction.
- Deflections at pipe joint or couplings shall not exceed the pipe manufacturers recommended maximum. Where deflections are greater than the maximum allowed, the contractor shall utilize fittings.
- Any existing joint exposed during excavation shall be replaced if within four feet of proposed joint.
- Valves 12 inch and larger are to be operated by the City Water Distribution Division, 48 hours of advance notice is required with the water Dispatch at 316-219-8921.
- All wet taps shall be installed by the City of Wichita. The Contractor will reimburse the City for tapping fees prior to tap being made. Unless noted on plans.
- The Contractor shall protect from damage and support existing utilities through construction as approved by the utility owner and the Engineer at the contractors expense.
- Contractor shall limit the extent of trench openings overnight and weekends to less than 50 feet.
- Andover Fire Department inspections may be scheduled by calling 316-733-8669.

Fire Vault:
Meter No. 16497716
Reading: all zeros

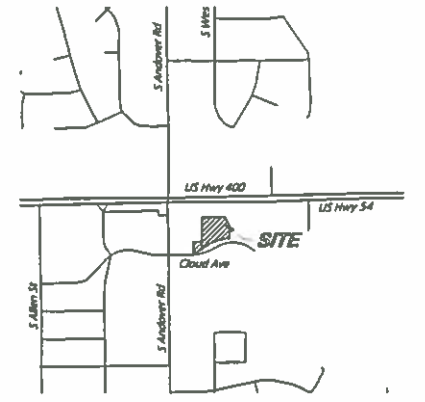
Benchmarks

TEMPORARY BENCHMARK
EXISTING SANITARY SEWER MANHOLE
NORTHEAST OF THE NORTHEAST PROPERTY
CORNER LABELED "SM" "B" WITH A TOP RIM
ELEVATION OF 1314.46'

BENCHMARK #1
EXISTING CHISELED "X" ON THE SOUTH SIDE
OF HWY. 54/400 IN CENTER CONCRETE
HEADWALL AT THE NORTH SIDE OF POND
APPROXIMATELY 37.6' EAST FROM A
SANITARY SEWER MANHOLE AND
APPROXIMATELY 50.7' NORTHEAST FROM
ANOTHER SANITARY SEWER MANHOLE
NAVD88 ELEVATION = 1310.93'
NAVD29 ELEVATION = 1310.46'

WATER DISTRIBUTION SYSTEM to serve **FIRESTONE COMPLETE AUTO CARE** 212 E CLOUD AVE CITY OF ANDOVER, KANSAS

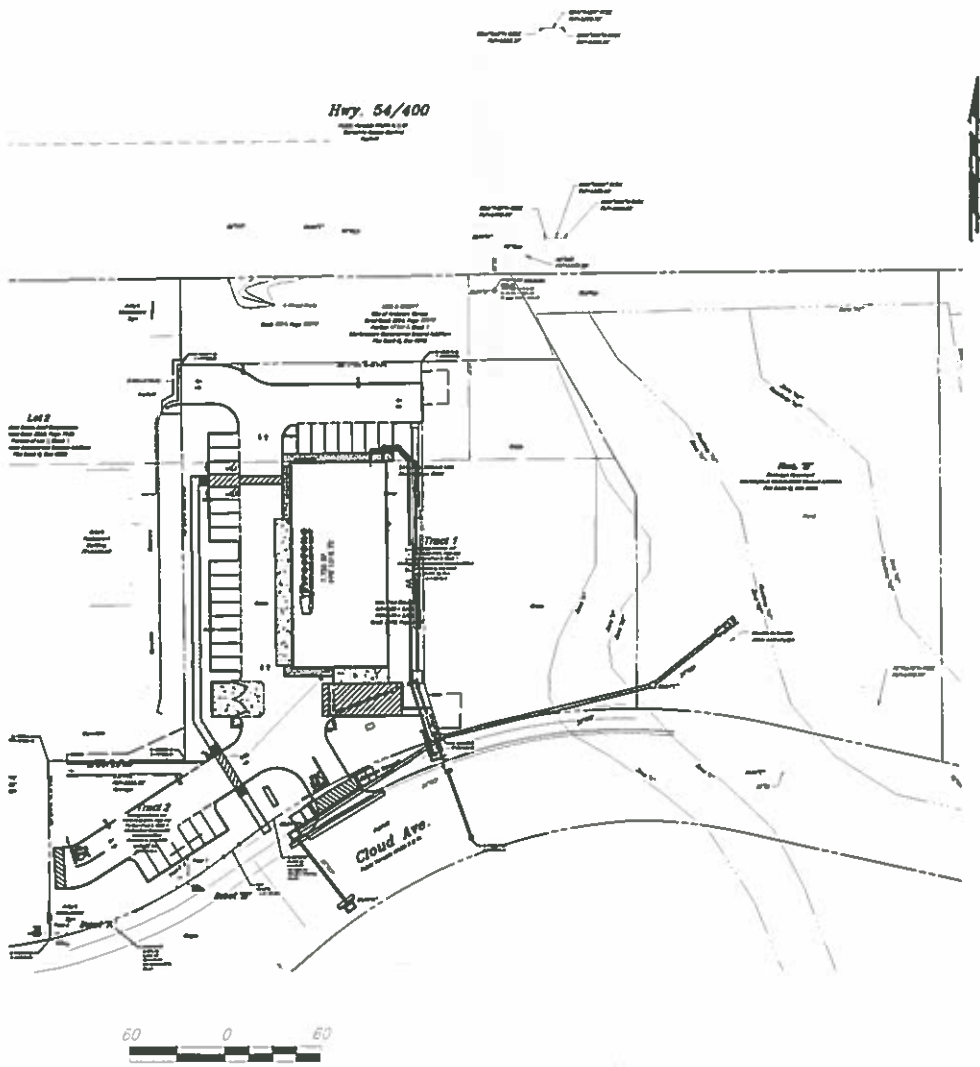
Gary Janzen, P.E. City Engineer
Project Number
2067 PPW (183021)



Vicinity Map

Sheet Index

WL1	TITLE SHEET
WL2	WATER LINE PLAN
WL3	WATER LINE PROFILE AND DETAILS
WL 101	STANDARD WATER ASSEMBLY DETAILS
WL 102	STANDARD WATER SERVICE DETAIL
WL 103	STANDARD VAULT DETAILS AND METER ASSEMBLIES
WL 104	MISCELLANEOUS WATER DETAILS
SW 501	BACK OF CURB PROTECTION, CURB INLET PROTECTION, AND CONSTRUCTION ENTRANCE
SW 502	SILT FENCE DITCH CHECK AND BARRIER DETAILS
SW 503	STRAW BALE DITCH CHECK AND BARRIER DETAILS
SW 504	STREET IMPROVEMENT PROJECTS
SW 505	SUBDIVISION DEVELOPMENT PROCESS
1 OF 2	SURVEY COVER/NOTES/ DESCRIPTION
2 OF 2	TOPOGRAPHIC/BOUNDARY SURVEY
1 OF 2	MARKETPLACE COMMERCIAL FOURTH ADDITION REPLAT
2 OF 2	MARKETPLACE COMMERCIAL FOURTH ADDITION REPLAT



AS-BUILT PLANS - NOVEMBER 2017

INSPECTED BY: CONSTRUCTED BY: SUPERINTENDENT: SUPPLIER:	JEFF CARTWRIGHT, MKEC ENGINEERING INC SOOTER EXCAVATING, INC. MICHAEL LEWIS WIN WATER
8" D.I. PIPE - 8" C900 DR 18 - 8" C900 DR 18 CERTA-LOK - 22 1/2 M.J. BEND - 8" 45 M.J. BEND - 8" 90 M.J. BEND - TAPPING SLEEVE & VALVE	64 LF (10UF BETWEEN EACH FITTING UNDER SWS) 152 LF 80 LF (BENEATH CLOUD AVE.) 1 6 1 1 EA
ADDITIONAL MATERIALS FOR REPAIR:	
8" D.I. SLEEVE - 8" PVC MEGA-LUGS - 12" D.I. MEGA-LUGS - 12" D.I. SLEEVES -	3 LF 2 2 2

APPROVED AS NOTED
BY WICHITA PUBLIC WORKS
ENGINEERING DIVISION
& BY ANDOVER FIRE DEPARTMENT

Engineering Rebecca P. 4/24/17
Utilities 2-7-17 6-16-17
Fire Dept. APN 5/24/17

NOTE TO CONTRACTORS

Public Property:
Inspection and testing for the wetlands is to be provided by a Licensed Consulting Engineering Firm under contract with the Owner/Developer. Said inspection is to be in accordance with the City of Wichita standard construction engineering practices and certified by a Professional Engineer Licensed in the state of Kansas. No work shall be performed in dedicated easements or public right-of-way by the Contractor without such inspection nor shall any work be commenced without written authorization by City Engineering. All construction and materials shall comply with the City or Wichita Specifications and Standards and Special Provisions (on file and available in the City Engineer's Office) or on the City's Website.

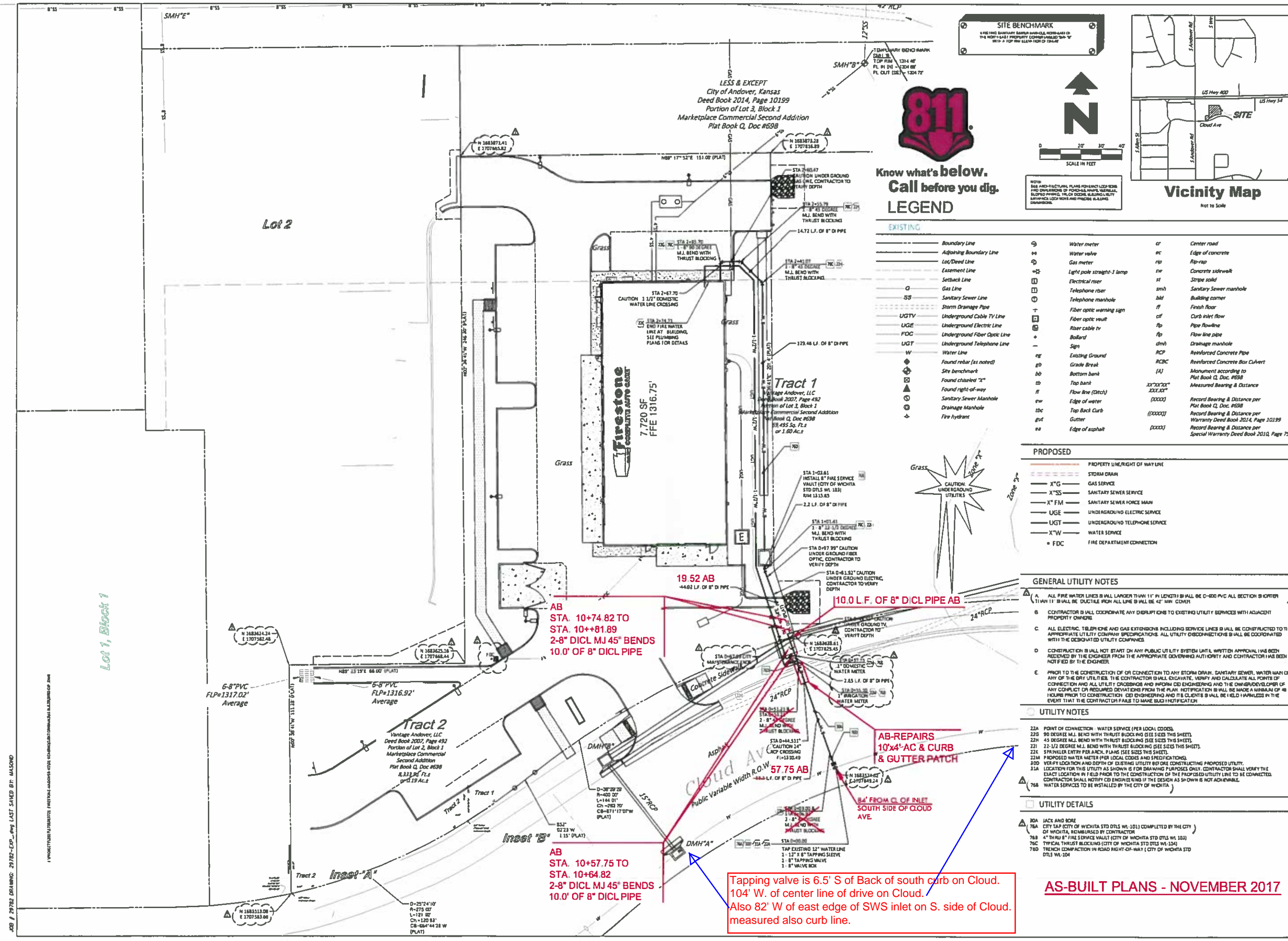
Private Property:
Installation and testing for the fire protection line is to be performed by a City of Andover licensed fire protection contractor in accordance with the fire codes as adopted by the City of Andover. All material and construction practices for the fire protection line shall comply with the fire codes as adopted by the City of Andover (available from the City of Andover Fire Department). The Contractor shall not commence work without notification and approval of the Andover Fire Department. Inspection of the fire protection line is to be provided by a Licensed Engineering Firm under contract with the Owner/Developer and the Fire Department. The contractor shall not start work until the project inspector is assigned to the project and present on the site. Any work done without inspection will be required to be uncovered for inspection.

An approved copy of these plans signed by City staff are required as-bills.

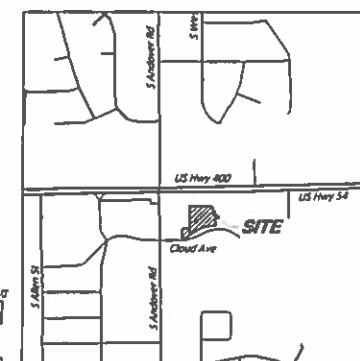
JUNE 2, 2017



3108 S.W. REGENCY PARKWAY, SUITE 2 (479) 273-9472
BENTONVILLE, AR 72713 FAX (479) 273-0844
24HR FAX: 29782-EXP. 29782
29782
29782
06/02/17
ADD: NOUAM 81-06/02/17



SITE BENCHMARK
 A PERMANENT BENCHMARK MARK-GLASS ROD-4483 IS TO BE PLACED IN THE NORTH-SOUTH PROPERTY CORNER LOCATED 10'-0" WEST & 10'-0" EAST FROM THE CORNER OF THE LOT.



**Know what's below.
 Call before you dig.
 LEGEND**

EXISTING		PROPOSED	
---	Boundary Line	---	PROPERTY LINE/RIGHT OF WAY LINE
---	Adjoining Boundary Line	---	STORM DRAIN
---	Lot/Deed Line	X" G	GAS SERVICE
---	Easement Line	X" SS	SANITARY SEWER SERVICE
---	Setback Line	X" FM	SANITARY SEWER FORCE MAIN
---	Gas Line	UGE	UNDERGROUND ELECTRIC SERVICE
---	Sanitary Sewer Line	UGT	UNDERGROUND TELEPHONE SERVICE
---	Storm Drainage Pipe	X" W	WATER SERVICE
---	Underground Cable TV Line	• FDC	FIRE DEPARTMENT CONNECTION
---	Underground Electric Line		
---	Underground Fiber Optic Line		
---	Underground Telephone Line		
---	Water Line		
---	Found rebar (as noted)		
---	Site benchmark		
---	Found chiseled "X"		
---	Found right-of-way		
---	Sanitary Sewer Manhole		
---	Drainage Manhole		
---	Fire hydrant		
---	Center road		
---	Edge of concrete		
---	Rip-rap		
---	Concrete sidewalk		
---	Stripe solid		
---	Sanitary Sewer manhole		
---	Building corner		
---	Finish floor		
---	Curb inlet flow		
---	Pipe flowline		
---	Flow line pipe		
---	Drainage manhole		
---	Reinforced Concrete Pipe		
---	Reinforced Concrete Box Culvert		
---	Monument according to Plat Book Q, Doc. #638		
---	Measured Bearing & Distance		
---	Record Bearing & Distance per Plat Book Q, Doc. #638		
---	Record Bearing & Distance per Warranty Deed Book 2014, Page 10199		
---	Record Bearing & Distance per Special Warranty Deed Book 2010, Page 7569		

GENERAL UTILITY NOTES

- ALL FIRE WATER LINES SHALL BE LARGER THAN 1 1/2" IN LENGTH & SHALL BE C-800 PVC ALL SECTION & 10" DIA. IF SHALL BE DUCTILE IRON ALL LINE & SHALL BE 2' MIN COVER.
- CONTRACTOR SHALL COORDINATE ANY DISRUPTIONS TO EXISTING UTILITY SERVICES WITH ADJACENT PROPERTY OWNERS.
- ALL ELECTRIC, TELEPHONE AND GAS EXTENSIONS INCLUDING SERVICE LINES SHALL BE CONSTRUCTED TO THE APPROPRIATE UTILITY COMPANY SPECIFICATIONS. ALL UTILITY DISCONNECTIONS SHALL BE COORDINATED WITH THE DESIGNATED UTILITY COMPANIES.
- CONSTRUCTION SHALL NOT START ON ANY PUBLIC UTILITY SYSTEM UNTIL WRITTEN APPROVAL HAS BEEN RECEIVED BY THE ENGINEER FROM THE APPROPRIATE GOVERNED AUTHORITY AND CONTRACTOR HAS BEEN NOTIFIED BY THE ENGINEER.
- PRIOR TO THE CONSTRUCTION OF OR CONNECTION TO ANY STORM DRAIN, SANITARY SEWER, WATER MAIN OR ANY OF THE DRY UTILITIES, THE CONTRACTOR SHALL EXCAVATE, VERIFY AND CALCULATE ALL POINTS OF CONNECTION AND ALL UTILITY CROSSINGS AND INFORM THE ENGINEER AND THE OWNER/DEVELOPER OF ANY CONFLICT OR REQUIRED DEVIATIONS FROM THE PLAN. NOTIFICATION SHALL BE MADE A MINIMUM OF 48 HOURS PRIOR TO CONSTRUCTION. THE ENGINEER AND HIS CLIENTS SHALL BE HELD HARMLESS IN THE EVENT THAT THE CONTRACTOR FAILS TO MAKE SUCH NOTIFICATION.

UTILITY NOTES

- POINT OF CONNECTION - WATER SERVICE (PER LOCAL CODES).
- 90 DEGREE M.J. BEND WITH THRUST BLOCKING (SEE SIZES THIS SHEET).
- 45 DEGREE M.J. BEND WITH THRUST BLOCKING (SEE SIZES THIS SHEET).
- 22 1/2 DEGREE M.J. BEND WITH THRUST BLOCKING (SEE SIZES THIS SHEET).
- SPRINKLER ENTRY PER ARCH. PLANS (SEE SIZES THIS SHEET).
- PROPOSED WATER METER (PER LOCAL CODES AND SPECIFICATIONS).
- VERIFY LOCATION AND DEPTH OF EXISTING UTILITY BEFORE CONSTRUCTING PROPOSED UTILITY.
- LOCATION FOR THIS UTILITY AS SHOWN IS FOR DRAWING PURPOSES ONLY. CONTRACTOR SHALL VERIFY THE EXACT LOCATION IN FIELD PRIOR TO THE CONSTRUCTION OF THE PROPOSED UTILITY LINE TO BE CONNECTED. CONTRACTOR SHALL NOTIFY THE ENGINEER IF THE DESIGN AS SHOWN IS NOT ACHIEVABLE.
- WATER SERVICES TO BE INSTALLED BY THE CITY OF WICHITA.

UTILITY DETAILS

- 20A JACK AND BORE
- 76A CITY TAP (CITY OF WICHITA STD DTLS WL-101) COMPLETED BY THE CITY
- 76B 4" THRU 8" FIRE SERVICE VALVE (CITY OF WICHITA STD DTLS WL-103)
- 76C TYPICAL THRUST BLOCKING (CITY OF WICHITA STD DTLS WL-104)
- 76D TRENCH CONNECTION IN ROAD RIGHT-OF-WAY (CITY OF WICHITA STD DTLS WL-104)

Engineering Associates, Inc.
Firestone COMPLETE AUTO CARE

NEW FCAC STORE
 8-BAY-FCAC-RC-RIGHT
 212 E CLOUD AVE
 ANDOVER, KS 67002

8 DIGIT NO. 18851
 4 DIGIT NO. 6830
 ENTITY ID NO. 882773
 SITE ID NO. 1112
 PROPERTY NO. 18851

FILE NAME: 29782-EXP.dwg
 CEI PROJECT NUMBER: 29782
 REVISION: REV-1 DATE: 08/02/17
 ADDENDUM 05- 06/21/17

SHEET TITLE:
WATER LINE PLAN

SHEET NUMBER:
WL2

JOB / 29782 DRAWING: 29782-EXP.dwg LAST SAVED BY: WALSOND
 I:\PROJECTS\2017\29782\FIRESTONE-ANDOVER-8335-FCAC\DWG\WATERLINE\WATERLINE.DWG

Lot 1, Block 1

Tapping valve is 6.5' S of Back of south curb on Cloud.
 104' W. of center line of drive on Cloud.
 Also 82' W of east edge of SWS inlet on S. side of Cloud.
 measured also curb line.

AS-BUILT PLANS - NOVEMBER 2017

