

REFERENCES NOTED	DATE
REFERENCES CHECKED	

STA. 4+174.72 PAWNEE AVE. CONSTRUCT CURB INLET TYPE IA, 8.38 m LT. L=1.93 m, W=1.32 m INLET TOP=58.48  
INSTALL 450 mm x 5.29 m STORM SEWER (RCP)(E)  
SEE SHEET NO. 51 & 56

STA. 4+180.00 PAWNEE AVE. CONSTRUCT 25.08 x 2.135 x 1.220 m RCB CULVERT W/ FLARED WINGWALLS 15.3m LT. W/ APRON LT. (SEE SHEET NO. 59 & 60)  
STD. TYPE 'B' MANHOLE  
STACK ON TOP OF RCB, 8.82 m RT.  
MH TOP = 58.49  
(SEE SHEET NO. 53 & 56)  
RESHAPE DITCH GRADING LT.

STATION	OFFSET (m)	DESCRIPTION	EXIST. ELEV.	PROP. ELEV.	REMARKS
4+154.3	14.2 RT.	WV	58.51	58.66	
4+166.4	13.7 LT.	SSMH	56.58	59.29	
4+235.2	8.2 RT.	SWMH	59.20	58.94	
4+236.9	9.4 RT.	WV	58.94	59.07	
4+237.9	16.6 LT.	WV	59.49	59.49	
4+238.7	16.9 LT.	FH	59.49	59.47	
4+252.8	12.9 RT.	WV	59.75	59.45	
4+254.1	13.5 RT.	WV	59.80	59.48	

STATION	OFFSET (m)	DESCRIPTION	EXIST. ELEV.	PROP. ELEV.	REMARKS
4+255.5	11.7 RT.	FH	59.80	59.48	
4+255.5	12.7 RT.	WV	59.90	59.50	

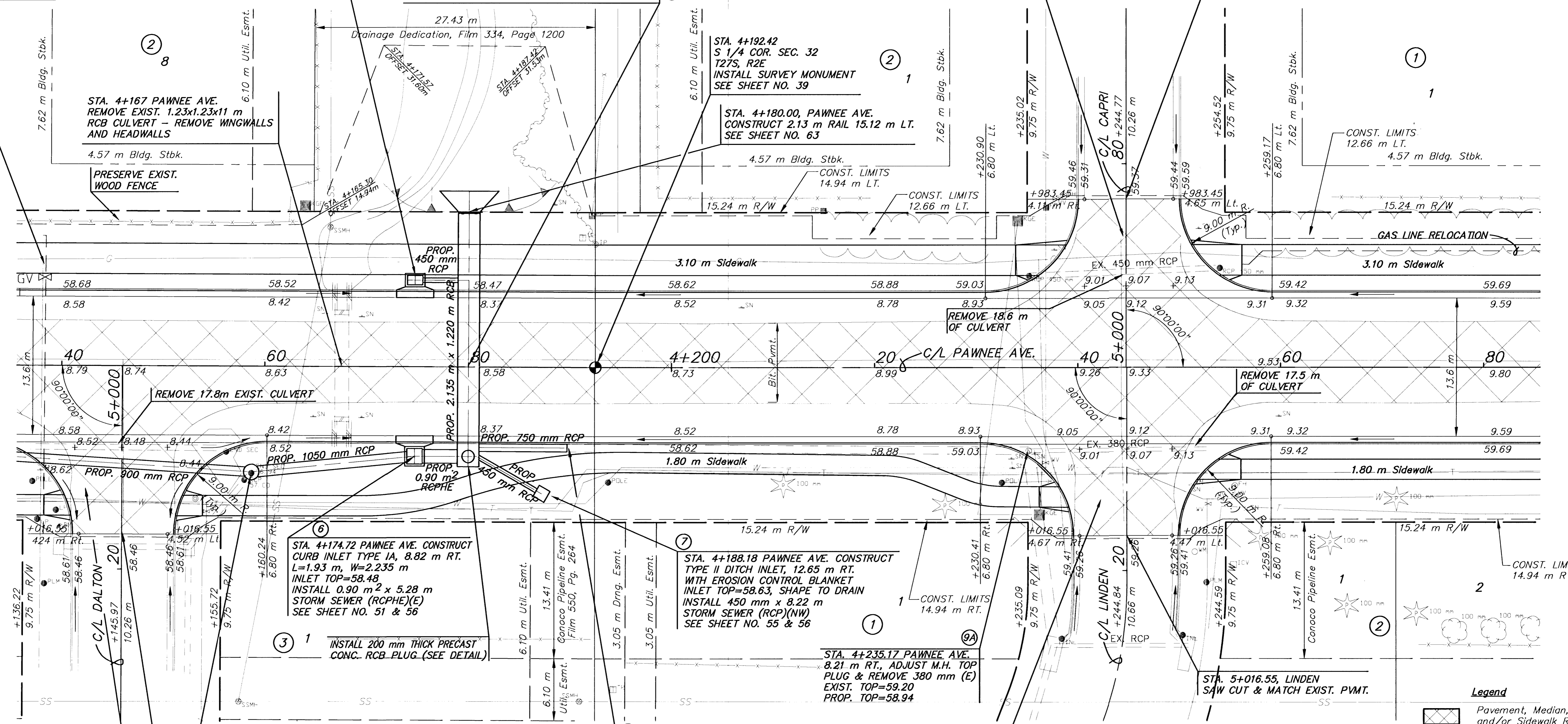
FHWA REG. NO.	STATE	PROJECT NO.	YEAR	SHEET NO.	TOTAL SHEETS
7	KANSAS	STP-N012(901)	1999	14	131

FIFTH ADDITION TO CHERRY CREEK HILLS

HEDGECLIFF 2ND ADDITION

STA. 4+244.77, PAWNEE CONST. CONC. PVMT. 200 mm UNIFORM (AE)  
SEE SHEET NO. 49

STA. 4+983.45, CAPRI SAW CUT & MATCH EXIST. PVMT.



STA. 4+174.72 PAWNEE AVE. CONSTRUCT CURB INLET TYPE IA, 8.82 m RT. L=1.93 m, W=2.235 m INLET TOP=58.48  
INSTALL 0.90 m<sup>2</sup> x 5.28 m STORM SEWER (RCP)(E)  
SEE SHEET NO. 51 & 56

STA. 4+188.18 PAWNEE AVE. CONSTRUCT TYPE II DITCH INLET, 12.65 m RT. WITH EROSION CONTROL BLANKET INLET TOP=58.63, SHAPE TO DRAIN  
INSTALL 450 mm x 8.22 m STORM SEWER (RCP)(NW)  
SEE SHEET NO. 55 & 56

STA. 4+235.17 PAWNEE AVE. 8.21 m RT., ADJUST M.H. TOP PLUG & REMOVE 380 mm (E)  
EXIST. TOP=59.20  
PROP. TOP=58.94

STA. 5+016.55, LINDEN SAW CUT & MATCH EXIST. PVMT.

STA. 4+144.97, PAWNEE CONST. CONC. PVMT. 200 mm UNIFORM (AE)  
SEE SHEET NO. 49

STA. 4+158.71 PAWNEE AVE. CONSTRUCT STD. SHALLOW MANHOLE DIA=1.53 m, 10.43 m RT. MANHOLE TOP=58.53  
CONNECT EXIST. 600 mm (RCP)(SW)  
INSTALL 1050 mm x 16.11 m STORM SEWER (RCP) (E)  
SEE SHEET 53 & 56

STA. 4+189.75 PAWNEE AVE., 7.95 m RT. REMOVE EXIST. END SECTION AND EXTEND EXIST. 750 mm STORM SEWER BY INSTALLING 750 mm x 9.75 m STORM SEWER (RCP) (W)  
SEE SHEET NO. 56

STA. 4+244.84, PAWNEE CONST. CONC. PVMT. 200 mm UNIFORM (AE)  
SEE SHEET NO. 49

STA. 5+016.55, DALTON SAW CUT & MATCH EXIST. PVMT.

- S 1/4 COR. SEC. 32, T27S, R2E, 6TH PM
1. PAWNEE C/L STA. 4+192.423
  2. 25 mm PIPE IN THIMBLE 100 mm BELOW PVMT.
  3. NAIL & WASHER IN E SIDE PP, 11.598 m S
  4. NAIL & WASHER IN E SIDE PP, 16.063 m N
  5. NAIL & WASHER IN SE SIDE PP, 27.447 m NE
  6. LINE OF HEDGE N

TOWNE PARC ADDITION

BM #11 COW BM SW cor. of Pawnee & Dalton  
0.9 m W of back of curb & 1.0 m N of SWS inlet. 15.89 m Rt. of Pawnee C/L.  
Sta. 4+139.88 Elev.=58.602

UTILITY OWNERS

- TV - Cox Communications (316)262-4270
- P1 - 12" Williams Natural Gas 1-800-324-9696
- P2 - 20" Williams Natural Gas 1-800-324-9696
- P3 - 4" Raytheon Aircraft (316)676-6867
- P4 - 4" Raytheon Aircraft (316)676-6867
- P5 - 18" Williams Natural Gas 1-800-324-9696
- P6 - 6" Conoco Pipe Line Co. 1-800-231-2551
- G - 6" Kansas Gas Service (316)832-3168
- E - KGE (316)261-6944
- SS - City of Wichita Water & Sewer Dept. (316)262-6000
- SWS - City of Wichita Water & Sewer Dept. (316)262-6000
- T - Southwestern Bell Telephone Co. 1-800-734-7590
- W - 16" City of Wichita Water & Sewer Dept. (316)262-6000

Legend  
Pavement, Median, Driveway and/or Sidewalk Removal

NO.	DATE	REVISIONS	BY	APP'D
2				
1				

KANSAS DEPARTMENT OF TRANSPORTATION

**PAWNEE AVE.**  
STA. 4+140 TO STA. 4+280

PROJ. NO. 87 STP-N-0129-01

**MKEC ENGINEERING CONSULTANTS, INC.**  
WICHITA, KANSAS

DESIGNED BY: JTC	CHECKED BY: GJA
DRAWN BY: GJR,MLW	DATE: JUNE 1999

SHEET 14 OF 131

G:\CIVIL\PAW-WEBB\98171\PAW\98171.DWG F:\ Aug 18 14:04:17 2000