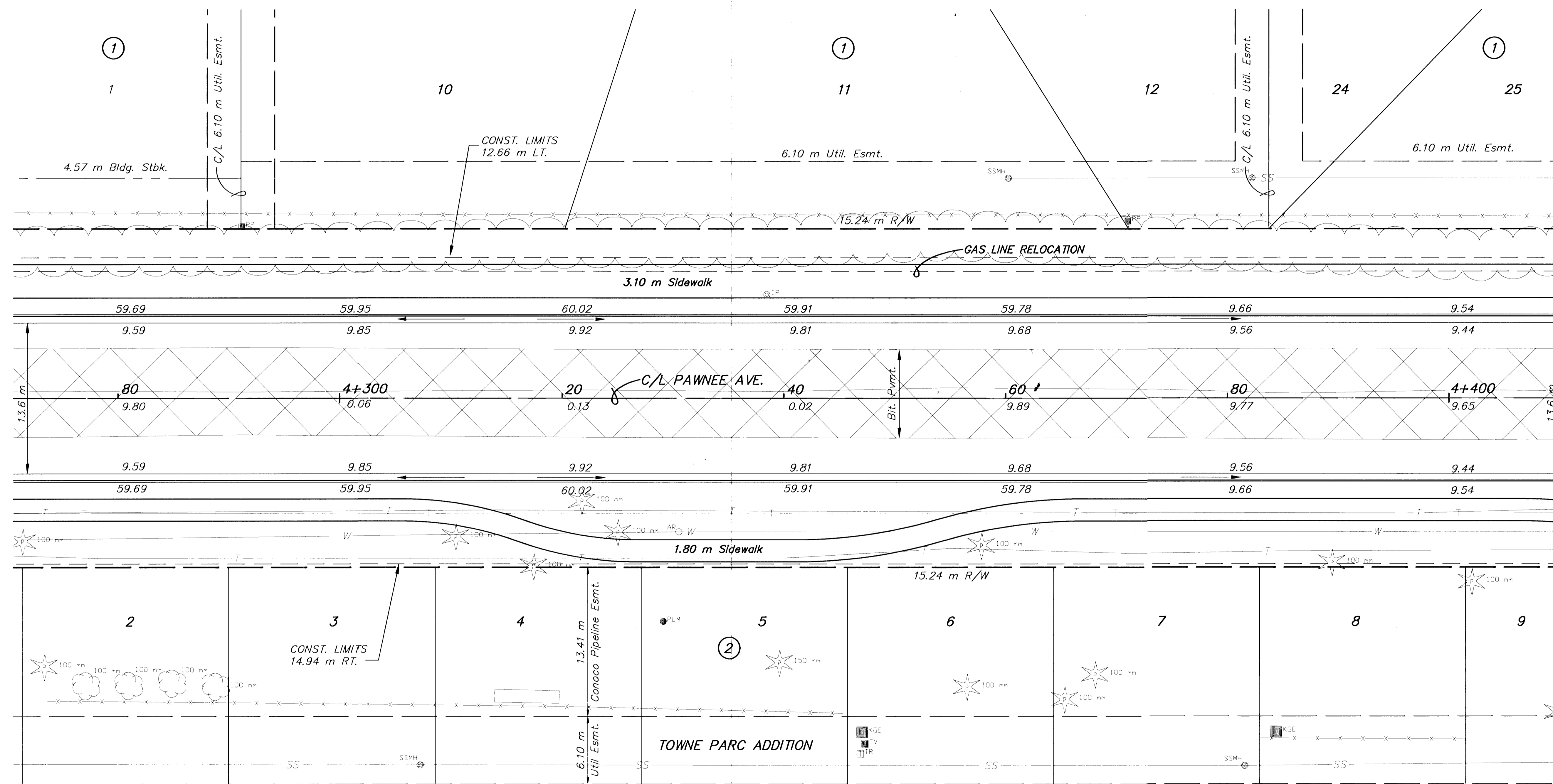


REFERENCES NOTED	DATE
REFERENCES CHECKED	

ADJUST VALVE BOX, FIRE HYDRANT & WTR. METER					
STATION	OFFSET (m)	DESCRIPTION	EXIST. ELEV.	PROP. ELEV.	REMARKS
4+330.54	12.03 RT.	WM	61.18	60.04	

FHWA REG. NO.	STATE	PROJECT NO.	YEAR	SHEET NO.	TOTAL SHEETS
7	KANSAS	STP-N012(901)	1999	16	131

HEDGE CLIFF 2ND ADDITION



59.69	59.95	60.02	59.91	59.78	9.66	9.54
9.59	9.85	9.92	9.81	9.68	9.56	9.44
80	4+300	20	40	60	80	4+400
9.80	0.06	0.13	0.02	9.89	9.77	9.65
9.59	9.85	9.92	9.81	9.68	9.56	9.44
59.69	59.95	60.02	59.91	59.78	9.66	9.54

BM #12 RR spike in S. side of 2nd Power Pole  
E. of Capri on N. side of Pawnee.  
15.97 m Lt. of Pawnee C/L.  
Sta. 4+371.03 Elev.=60.425

- UTILITY OWNERS**
- TV - Cox Communications (316)262-4270
  - P1 - 12" Williams Natural Gas 1-800-324-9696
  - P2 - 20" Williams Natural Gas 1-800-324-9696
  - P3 - 4" Raytheon Aircraft (316)676-6867
  - P4 - 4" Raytheon Aircraft (316)676-6867
  - P5 - 18" Williams Natural Gas 1-800-324-9696
  - P6 - 6" Conoco Pipe Line Co. 1-800-231-2551
  - G - 6" Kansas Gas Service (316)832-3168
  - E - KGE (316)261-6944
  - SS - City of Wichita Water & Sewer Dept. (316)268-4908
  - SWS - City of Wichita Water & Sewer Dept. (316)268-4908
  - T - Southwestern Bell Telephone Co. 1-800-734-7590
  - W - 16" City of Wichita Water & Sewer Dept. (316)268-4908

**Legend**

▨ Pavement, Median, Driveway and/or Sidewalk Removal

2			
1			
NO.	DATE	REVISIONS	BY
KANSAS DEPARTMENT OF TRANSPORTATION			
<b>PAWNEE AVE.</b>			
<b>STA. 4+280 TO STA. 4+400</b>			
PROJ. NO. 87 STP-N-0129-01			
<b>MKEC ENGINEERING CONSULTANTS, INC.</b>			
WICHITA, KANSAS			
DESIGNED BY:	JTC	CHECKED BY:	GJA
DRAWN BY:	GJR,MLW	DATE:	MAY 1999

SHEET 16 OF 131

6:\CIVIL\PAW-NEBB\98171\PAW-NEBB\98171\PAW-NEBB\98171.DWG Thu Jul 13 15:56:22 2000