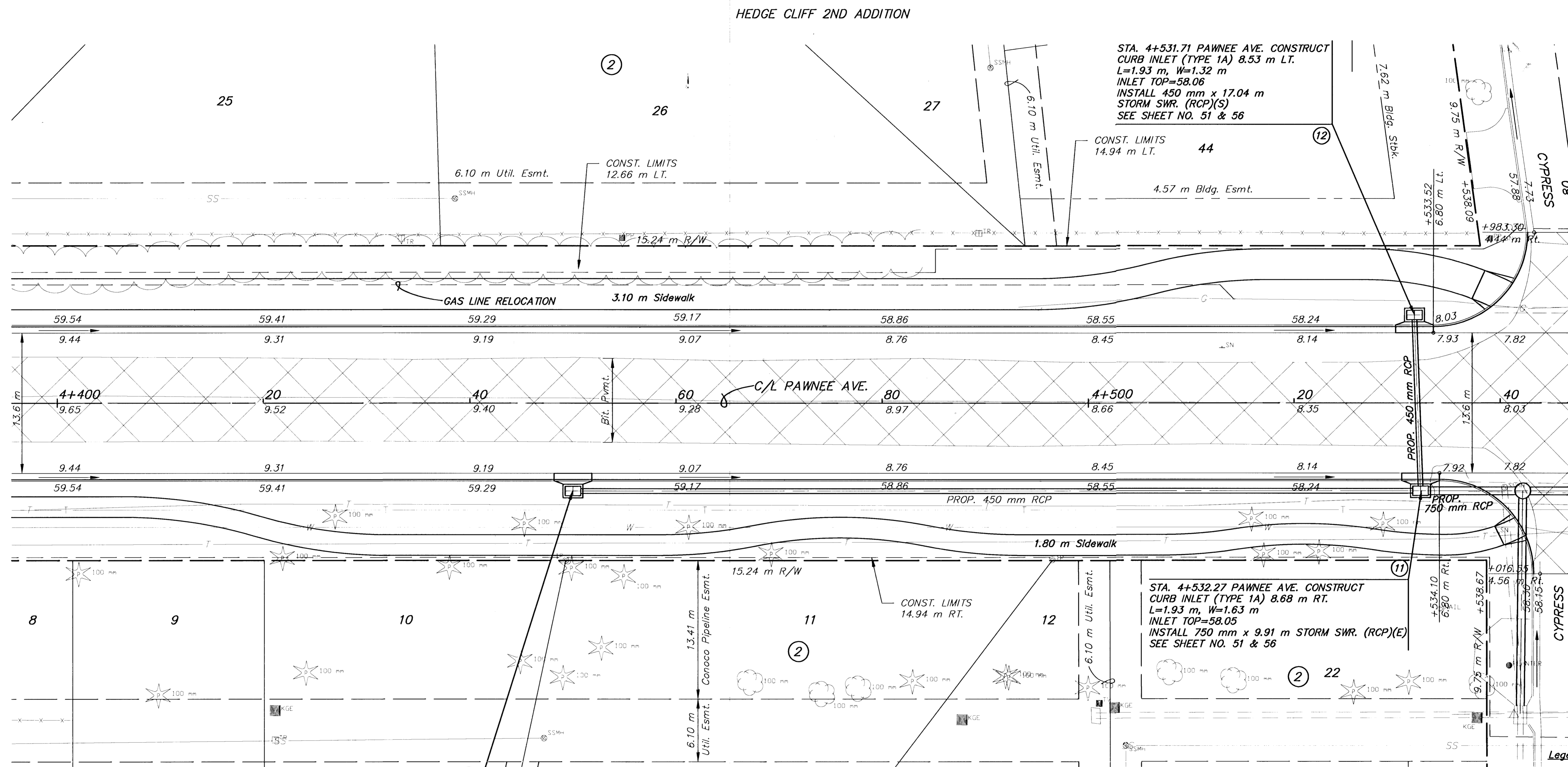


FHWA REG NO.	STATE	PROJECT NO.	YEAR	SHEET NO	TOTAL SHEETS
7	KANSAS	STP-N012(901)	1999	18	131

REFERENCES NOTED	DATE
REFERENCES CHECKED	



STA. 4+531.71 PAWNEE AVE. CONSTRUCT CURB INLET (TYPE 1A) 8.53 m LT. L=1.93 m, W=1.32 m INLET TOP=58.06 INSTALL 450 mm x 17.04 m STORM SWR. (RCP)(S) SEE SHEET NO. 51 & 56

CONST. LIMITS 14.94 m LT. 44

4.57 m Bldg. Esmt.

6.10 m Util. Esmt. CONST. LIMITS 12.66 m LT.

GAS LINE RELOCATION 3.10 m Sidewalk

C/L PAWNEE AVE.

PROP. 450 mm RCP

1.80 m Sidewalk

STA. 4+532.27 PAWNEE AVE. CONSTRUCT CURB INLET (TYPE 1A) 8.68 m RT. L=1.93 m, W=1.63 m INLET TOP=58.05 INSTALL 750 mm x 9.91 m STORM SWR. (RCP)(E) SEE SHEET NO. 51 & 56

CONST. LIMITS 14.94 m RT.

TOWN PARC ADDITION

STA. 4+450.00 PAWNEE AVE. CONSTRUCT CURB INLET (TYPE 1A) 8.53 m RT. L=1.93 m, W=1.32 m INLET TOP=59.23 INSTALL 450 mm x 82.27 m STORM SWR. (RCP)(E) SEE SHEET NO. 51 & 56

UTILITY OWNERS

- TV - Cox Communications (316)262-4270
- P1 - 12" Williams Natural Gas 1-800-324-9696
- P2 - 20" Williams Natural Gas 1-800-324-9696
- P3 - 4" Raytheon Aircraft (316)676-6867
- P4 - 4" Raytheon Aircraft (316)676-6867
- P5 - 18" Williams Natural Gas 1-800-324-9696
- P6 - 6" Conoco Pipe Line Co. 1-800-231-2551
- G - 6" Kansas Gas Service (316)832-3168
- E - KGE (316)261-6944
- SS - City of Wichita Water & Sewer Dept. (316)262-6000
- SWS - City of Wichita Water & Sewer Dept. (316)262-6000
- T - Southwestern Bell Telephone Co. 1-800-734-7590
- W - 16" City of Wichita Water & Sewer Dept. (316)262-6000

Legend
 Pavement, Median, Driveway and/or Sidewalk Removal

2				
1				
NO.	DATE	REVISIONS	BY	APP'D
KANSAS DEPARTMENT OF TRANSPORTATION				
PAWNEE AVE.				
STA. 4+400 TO STA. 4+540				
PROJ. NO. 87 STP-N-0129-01				
MKEC ENGINEERING CONSULTANTS, INC.				
WICHITA, KANSAS				
DESIGNED BY:	JTC	CHECKED BY:	GJA	
DRAWN BY:	GJR,MLW	DATE:	JULY 1999	SHEET 18 OF 131

G:\CIVIL\PAW-NEBB\98171\PAW\98171\PAW\98171.DWG Thu Jul 13 15:52:26 2000