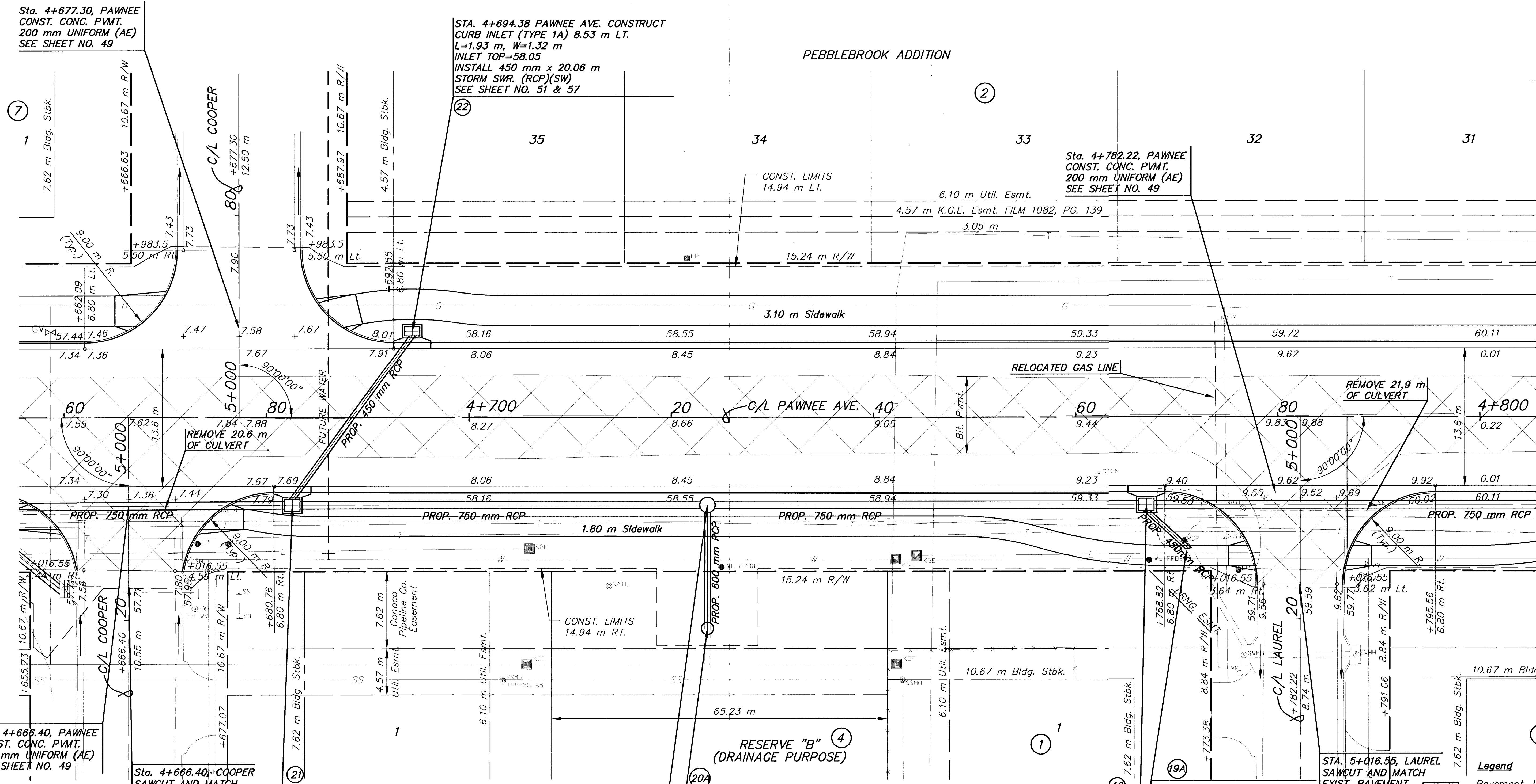


| FHWA REG NO. | STATE | PROJECT NO. | YEAR | SHEET NO | TOTAL SHEETS |
|--------------|--------|---------------|------|----------|--------------|
| 7 | KANSAS | STP-N012(901) | 1999 | 22 | 131 |

| ADJUST VALVE BOX, FIRE HYDRANT & WTR. METER | | | | | |
|---|------------|-------------|--------------|-------------|---------|
| STATION | OFFSET (m) | DESCRIPTION | EXIST. ELEV. | PROP. ELEV. | REMARKS |
| 4+674.4 | 15.1 RT. | WV | 58.01 | 58.00 | |
| 4+787.9 | 16.2 RT. | FH | 59.84 | 59.81 | |
| 4+788.9 | 14.5 RT. | WV | 59.83 | 59.84 | |
| 4+788.9 | 16.1 RT. | WV | 59.90 | 59.83 | |

| | |
|--------------------|--|
| DATE | |
| BY | |
| REFERENCES NOTED | |
| REFERENCES CHECKED | |



- UTILITY OWNERS**
- TV - Cox Communications (316)262-4270
 - P1 - 12" Williams Natural Gas 1-800-324-9696
 - P2 - 20" Williams Natural Gas 1-800-324-9696
 - P3 - 4" Raytheon Aircraft (316)676-6867
 - P4 - 4" Raytheon Aircraft (316)676-6867
 - P5 - 18" Williams Natural Gas 1-800-324-9696
 - P6 - 6" Conoco Pipe Line Co. 1-800-231-2551
 - G - 6" Kansas Gas Service (316)832-3168
 - E - KGE (316)261-6944
 - SS - City of Wichita Water & Sewer Dept. (316)262-6000
 - SWS - City of Wichita Water & Sewer Dept. (316)262-6000
 - T - Southwestern Bell Telephone Co. 1-800-734-7590
 - W - 16" City of Wichita Water & Sewer Dept. (316)262-6000

STA. 4+682.59 PAWNEE AVE. CONSTRUCT CURB INLET (TYPE 1A) 8.67 m RT. L=1.93 m, W=1.63 m INLET TOP=57.82 INSTALL 750 mm x 32.96 m STORM SWR. (RCP)(W) SEE SHEET NO. 51 & 57

STA. 4+723.57 PAWNEE AVE. CONSTRUCT STD. SHALLOW MANHOLE 8.53 m RT. MANHOLE TOP=58.64, DIA.=1.524 INSTALL 750 mm x 39.46 m STORM SWR. (RCP)(W) SEE SHEET NO. 53 & 57

BM #13 Square Cut on NW cor. of SWS inlet on SW cor. of Pawnee & Cooper. 16.03 m Rt. of Pawnee C/L. Sta. 4+659.51 Elev.=57.907

KANSAS DEPARTMENT OF TRANSPORTATION

PAWNEE AVE.
STA. 4+660 TO STA. 4+800
 PROJ. NO. 87 STP-N-0129-01

MKEC ENGINEERING CONSULTANTS, INC.
 WICHITA, KANSAS

| | |
|-------------------|---------------------------------|
| DESIGNED BY: JTC | CHECKED BY: GJA |
| DRAWN BY: GJR,MLW | DATE: JULY 1999 SHEET 22 OF 131 |

G:\CIVIL\PAW-KEBA\98171\PAW\98171E13.DWG Thu Sep 14 09:32:24 2000