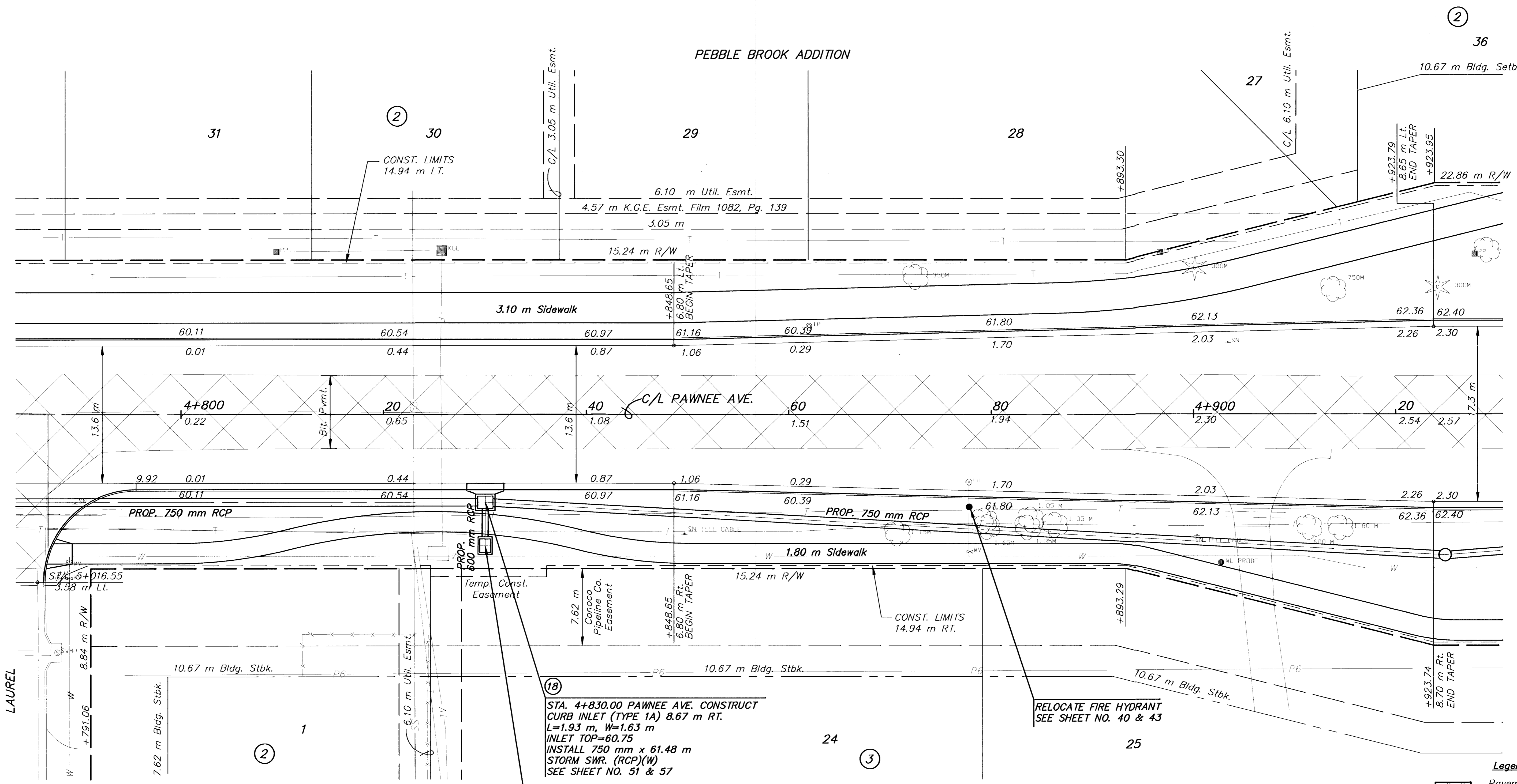


REFERENCES NOTED	DATE
REFERENCES CHECKED	

ADJUST VALVE BOX, FIRE HYDRANT & WTR. METER					
STATION	OFFSET (m)	DESCRIPTION	EXIST. ELEV.	PROP. ELEV.	REMARKS
4+877.8	6.7 RT.	FH	61.82	61.68	RELOCATE
4+877.8	13.5 RT.	WV	61.95	61.90	

FHWA REG. NO.	STATE	PROJECT NO.	YEAR	SHEET NO.	TOTAL SHEETS
7	KANSAS	STP-N012(901)	1999	24	131



(18)
 STA. 4+830.00 PAWNEE AVE. CONSTRUCT CURB INLET (TYPE 1A) 8.67 m RT. L=1.93 m, W=1.63 m INLET TOP=60.75 INSTALL 750 mm x 61.48 m STORM SWR. (RCP)(W) SEE SHEET NO. 51 & 57

(18A)
 STA. 4+830.00, PAWNEE AVE. CONSTRUCT DITCH INLET (TYPE 2) 12.99 m RT. INLET TOP=60.84 W/ EROSION CONTROL BLANKET INSTALL 600 mm x 4.32 m STORM SWR. (RCP)(N) SEE SHEET NO. 55 & 57

- UTILITY OWNERS**
- TV - Cox Communications (316)262-4270
 - P1 - 12" Williams Natural Gas 1-800-324-9696
 - P2 - 20" Williams Natural Gas 1-800-324-9696
 - P3 - 4" Raytheon Aircraft (316)676-6867
 - P4 - 4" Raytheon Aircraft (316)676-6867
 - P5 - 18" Williams Natural Gas 1-800-324-9696
 - P6 - 6" Conoco Pipe Line Co. 1-800-231-2551
 - G - 6" Kansas Gas Service (316)832-3168
 - E - KGE (316)261-6944
 - SS - City of Wichita Water & Sewer Dept. (316)262-6000
 - SWS - City of Wichita Water & Sewer Dept. (316)262-6000
 - T - Southwestern Bell Telephone Co. 1-800-734-7590
 - W - 16" City of Wichita Water & Sewer Dept. (316)262-6000

Legend
 Pavement, Median, Driveway and/or Sidewalk Removal

NO.	DATE	REVISIONS	BY	APP'D
2				
1				

KANSAS DEPARTMENT OF TRANSPORTATION

PAWNEE AVE.
 STA. 4+800 TO STA. 4+920

PROJ. NO. 87 STP-N-0129-01

MKEC ENGINEERING CONSULTANTS, INC.
 WICHITA, KANSAS

DESIGNED BY: JTC
 DRAWN BY: GJR,MLW

CHECKED BY: GJA
 DATE: JULY 1999

SHEET 24 OF 131

G:\CIVIL\PAW-NEBB\98171\PAW\98171E14.DWG Mod Jul 26 11:21:14 2000

C:\CIVIL\PAW-NEBB\98171\PAW\98171E14.DWG