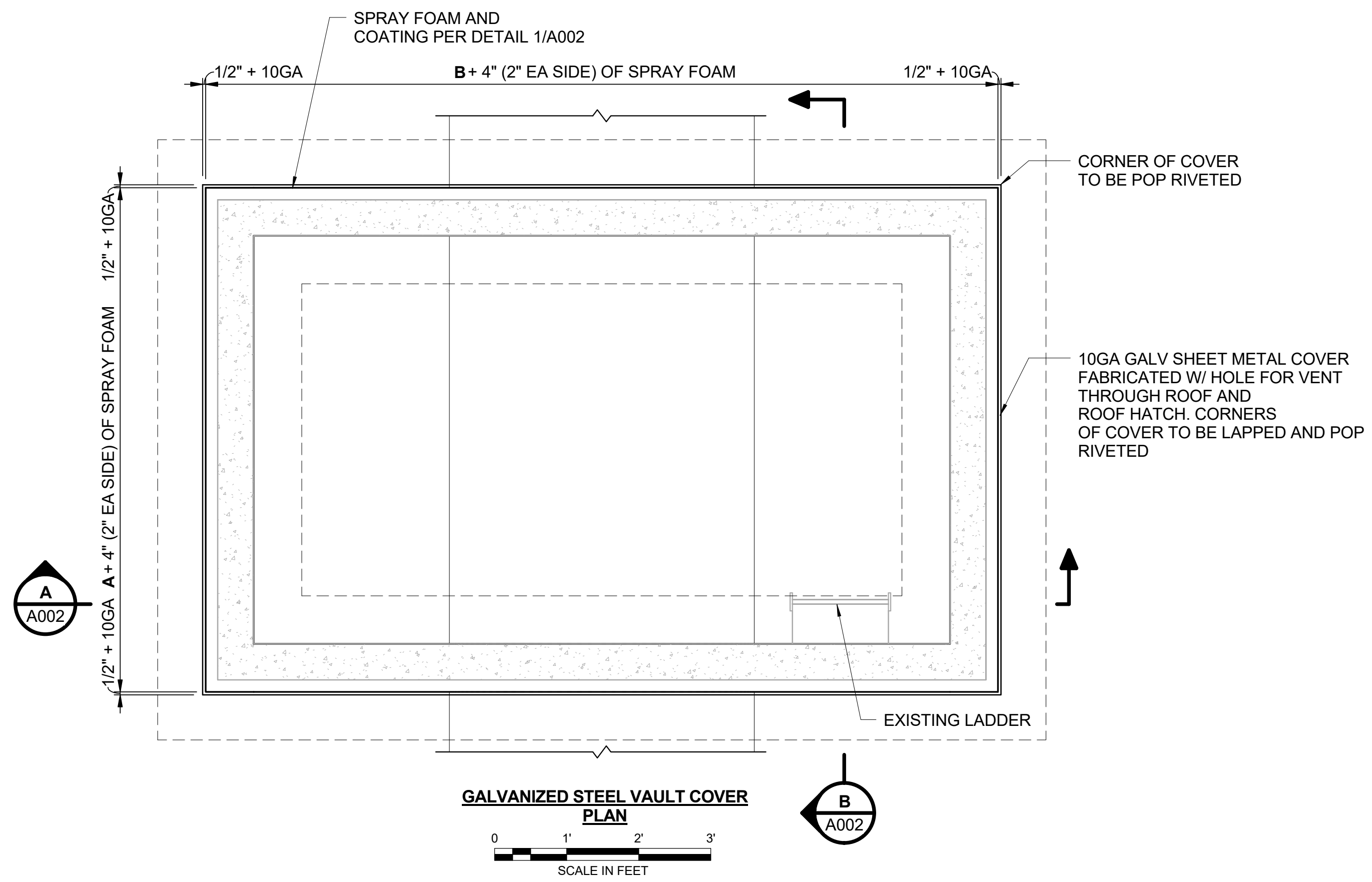
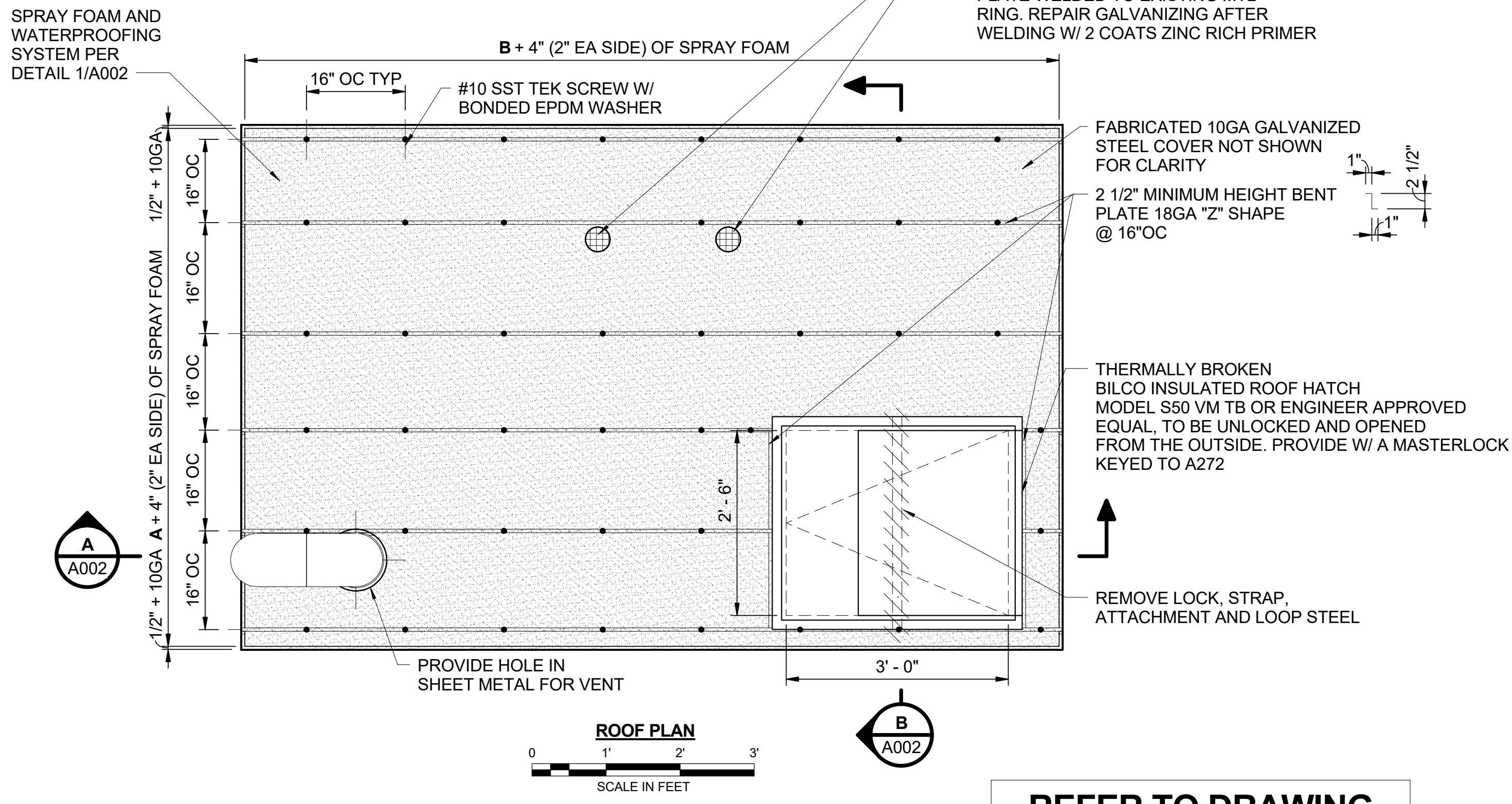


no.	date	by	ckd	description
0	11/8/17	RPL	JT	ISSUED FOR BID



Millimeters
Scale For Microfitting

Inches



COPYRIGHT © 2017 BURNS & McDONNELL ENGINEERING COMPANY, INC.

REFER TO DRAWING D001 FOR LETTER A & B DIMENSIONS

BURNS & McDONNELL

PROTECTIVE COATING SYSTEM

System: **E-1**

SERVICE: Steel & Iron – Nonpotable Liquid Immersion, Normal to Severe Exposure. Interior of Tank or Basin. Exterior of Steel, Piping, or Equipment in Tank or Basin.

Surface Preparation: Shop or Field First Coat: SSPC-SP10 and profile depth of 1.5 to 2.5 mils (38 to 63 microns). Field Touch-Up (of Shop-applied first coat): Same as for First Coat.

First Coat: High solids amine, polyamidoamine, or polyamide epoxy coating with minimum 67% solids by volume. Apply at 5.0 to 7.0 mils (125 to 175 microns) dry film thickness.

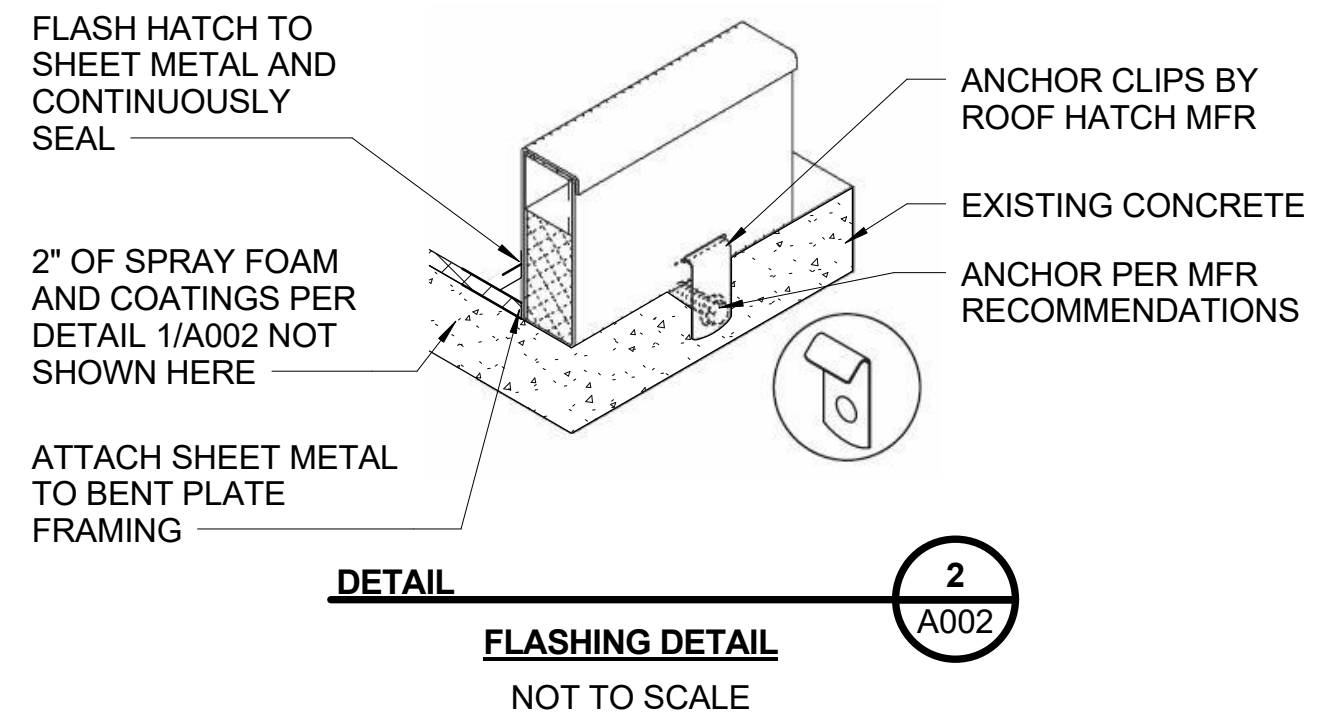
Second Coat: Same as first coat.

System Total: Minimum 10.0 mils (250 microns) dry film thickness. Check for voids with holiday or pinhole detector.

Volatile Organic Content: Maximum 2.8 lb/gal (340 g/L).

COATING MANUFACTURER	PRODUCT DESIGNATION		
	FIRST COAT	TOUCH UP	SECOND COAT
PPG	Amerlock 2 or 400	Same as first coat	Same as first coat
Sherwin-Williams	Macropoxy 646 FC B58W610/B58V600	Same as first coat	Same as first coat
Tnemec	Epoxoline II Series 96 HS	Same as first coat	Same as first coat

- GENERAL NOTES:**
- ALL PRODUCTS SPECIFIED ARE "OR ENGINEER APPROVED EQUAL."
 - MINIMUM R-VALUE REQUIRED R-10Ci PER INTERNATIONAL BUILDING CODE 2012 IECC BELOW GRADE MASS.
 - SUBMIT ALL ITEMS CALLED FOR ON THIS SHEET FOR ENGINEER/ARCHITECT APPROVAL PRIOR TO INSTALLATION. SUBMITTAL SHALL INCLUDE BUT NOT BE LIMITED TO DATA SHEETS, SHOP DRAWINGS, HARD AND DIGITAL COPY COLOR CHART.
 - INSTALL PER MANUFACTURERS DATA SHEETS AND INSTRUCTIONS.
 - SPRAY FOAM SYSTEM AND COATINGS SHALL BE WARRANTED AS A SINGLE SYSTEM.
 - SPRAY FOAM APPLICATORS SHALL HAVE AND DOCUMENT IN THE SUBMITTAL A MINIMUM OF 5 YEARS APPLICABLE EXPERIENCE.
 - OWNER TO APPROVE SHEET METAL COVER ON FIRST VAULT PRIOR TO FABRICATION OF SUBSEQUENT COVERS.
 - INSULATION SHALL BE ON EVERY VAULT EXISTING AND NEW INCLUDING IF BID ALTERNATES ARE SELECTED.



This document has been digitally signed. Nov 8 2017 8:48 AM

9400 WARD PARKWAY
KANSAS CITY, MO 64114
816-333-9400
LICENSEE NO. E-65

date SEPTEMBER 12, 2017	detailed R. GUIN
designed R. LANG	checked J. TSOULIAS

City of
Wichita, Kansas
SEDGWICK, KANSAS

CHENEY TRANSMISSION LINE FLOOR PLAN

project 97687	contract
drawing A001	rev. 0
sheet	of sheets
file 97687_ARCH_2017.RVT	

A
B
C
D
E
F
G
H
I