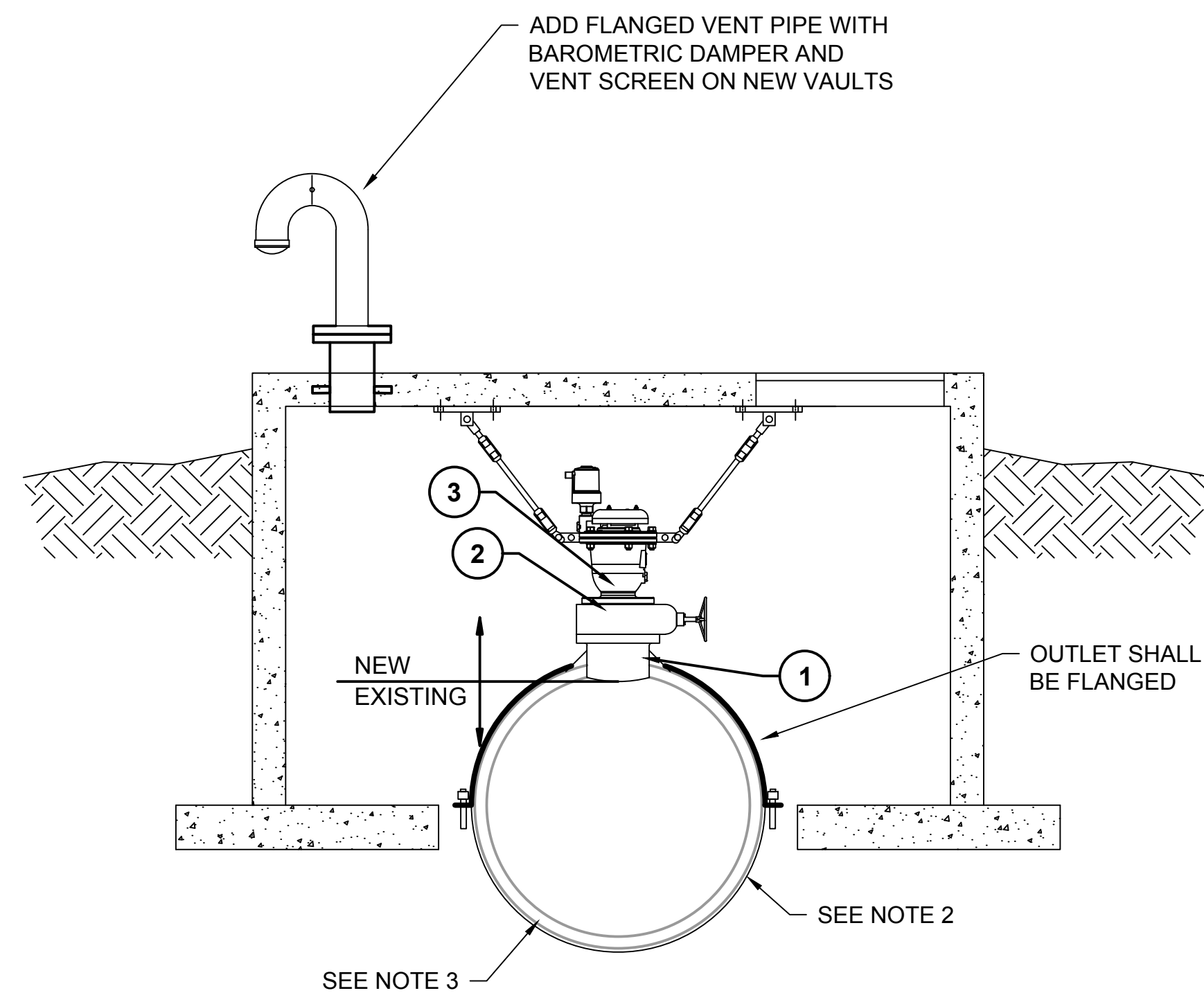


BID ALTERNATES

NOTE:

1. VAULT 21 PERTAINS TO BID ALTERNATE 1, VAULT 19 PERTAINS TO BID ALTERNATE 2, AND VAULT 14 PERTAINS TO BID ALTERNATE 3.
2. TAPPING SADDLE FOR BID ALTERNATES 1, 2, AND 3 SHALL BE SPECIFICALLY DESIGNED FOR PCCP AT THE RATED PRESSURE OF THE PIPE.
3. TAPPING SADDLE AS MANUFACTURED BY ROMAC, SMITH-BLAIR, JCM, U.S. PIPE, MUELLER, CASCADE MANUFACTURING, OR ENGINEER APPROVED EQUAL.

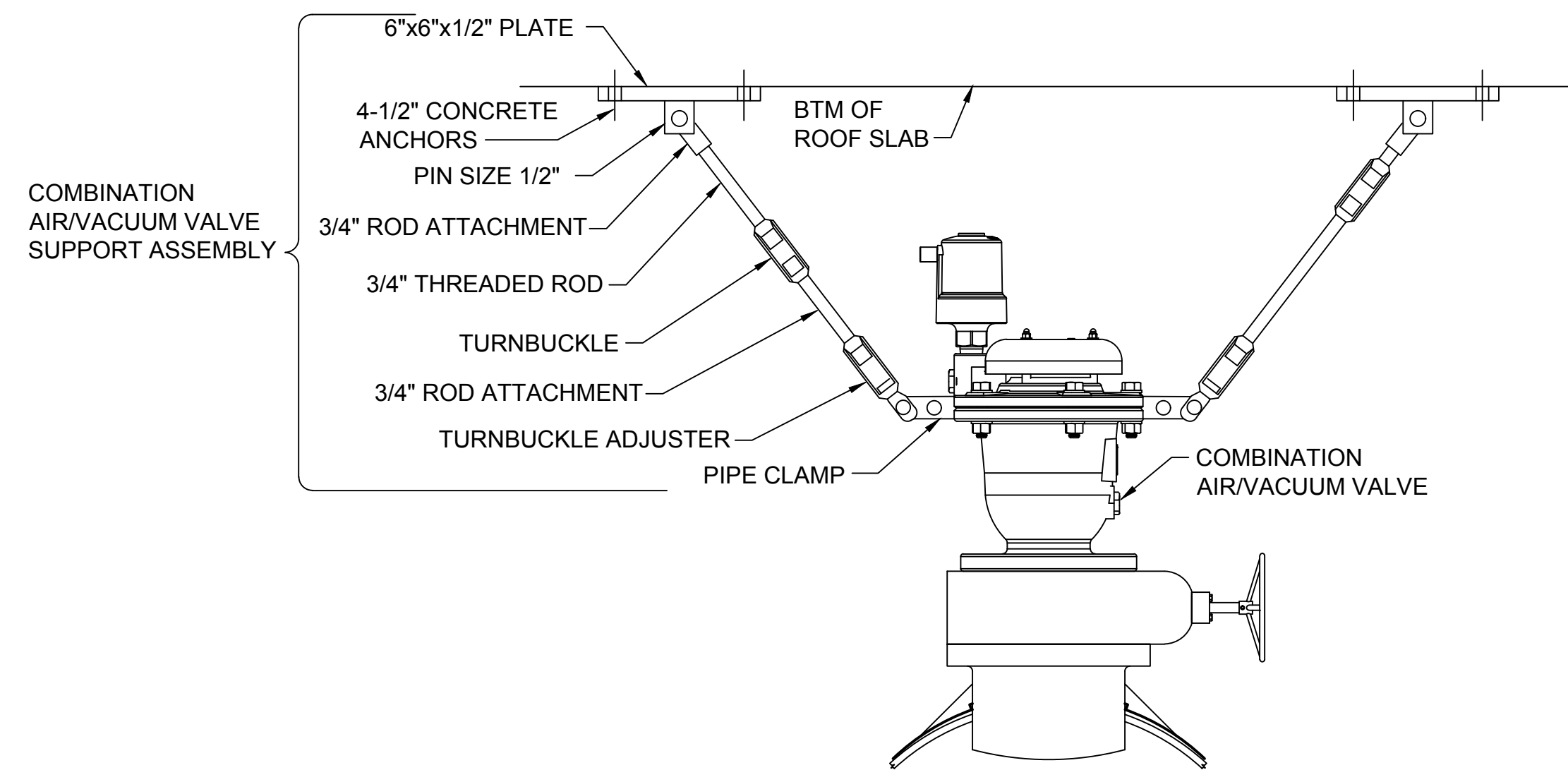
VAULT	①	②	③
14*	12-INCH	12-INCH FLANGED GV	12-INCH COMBINATION AIR/VACUUM VALVE
19*	12-INCH	12-INCH THREADED BALL VALVE	12-INCH COMBINATION AIR/VACUUM VALVE
21*	12-INCH	12-INCH FLANGED GV	12-INCH COMBINATION AIR/VACUUM VALVE



NOTES:

1. REFER TO D002 FOR DEMOLITION REQUIREMENTS.
2. INSULATE AND COVER VAULT PER ARCHITECTURAL DRAWINGS.

SECTION B
VAULT REPLACEMENT
OUTLET PIPING
 NOT TO SCALE



COMBINATION AIR/VACUUM VALVE
SUPPORT 4" AND LARGER DETAIL
 NOT TO SCALE

no.	date	by	ckd	description
0	11/8/17	CAM	LJK	ISSUED FOR BID

Millimeters

Scale For Microfining

Inches

COPYRIGHT © 2017 BURNS & MCDONNELL ENGINEERING COMPANY, INC.



9400 WARD PARKWAY
 KANSAS CITY, MO 64114
 816-333-9400
 LICENSEE NO. E-65

date	SEPTEMBER 11, 2017	detailed	B. FIFIELD
designed	C. MAGES	checked	L. KLEIN



SEDGWICK, KANSAS

CHENEY TRANSMISSION LINE

VAULT REPLACEMENT INTERIOR MODIFICATIONS	
project	contract
97687	
drawing	rev.
BA-D001	0
sheet	of sheets
file 97687_BA-D001.DWG	