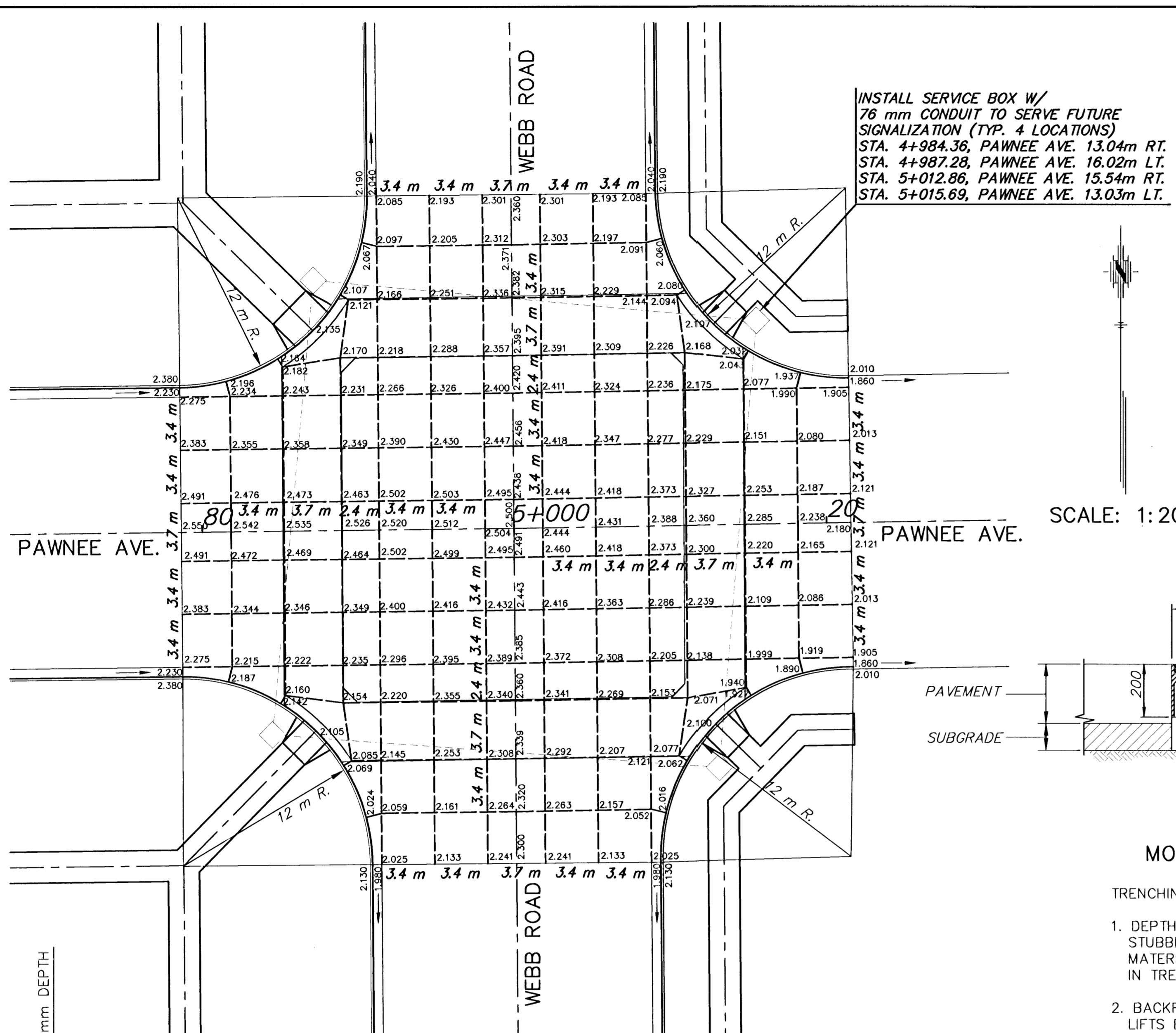
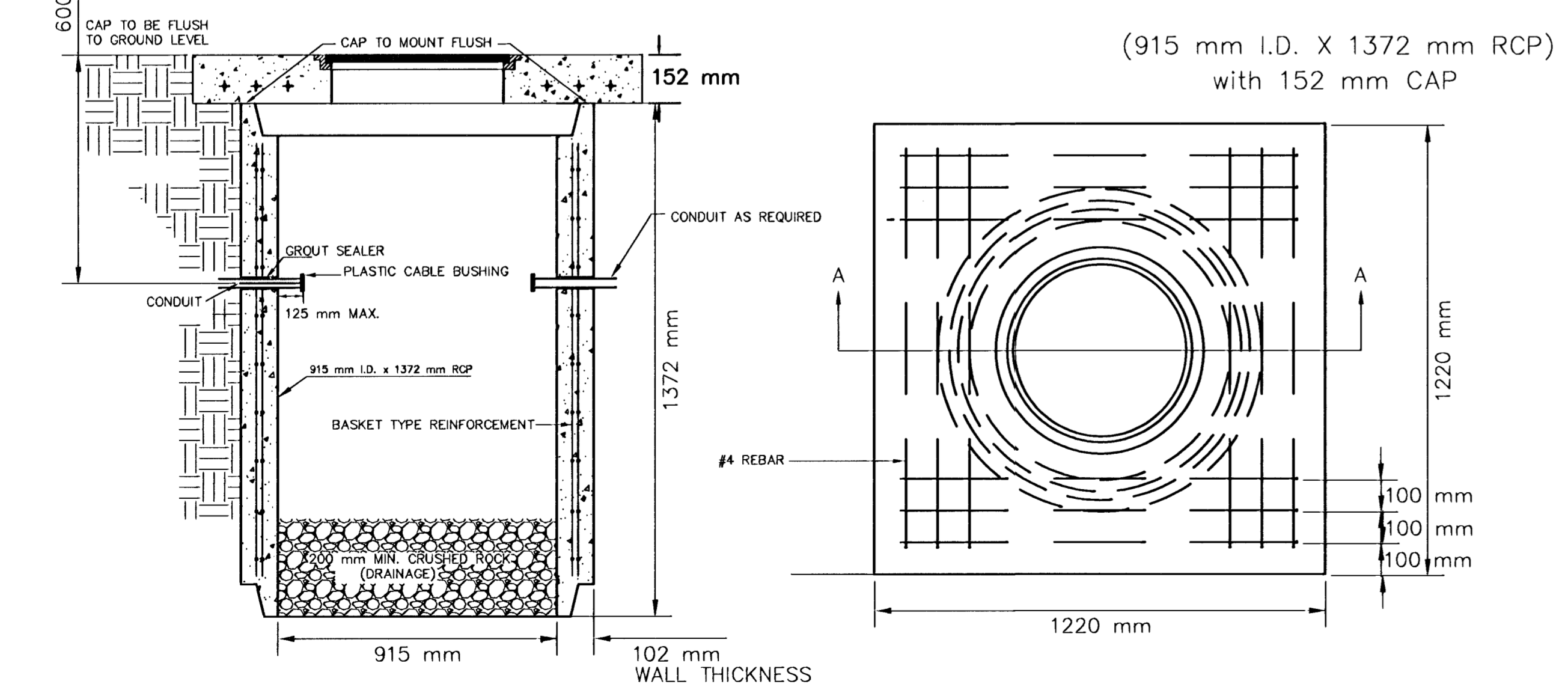


FHWA REG. NO.	STATE	PROJECT NO.	YEAR	SHEET NO.	TOTAL SHEETS
7	KANSAS	STP-N012(901)	1999	39	131

BY	DATE
REFERENCES NOTED	
REFERENCES CHECKED	

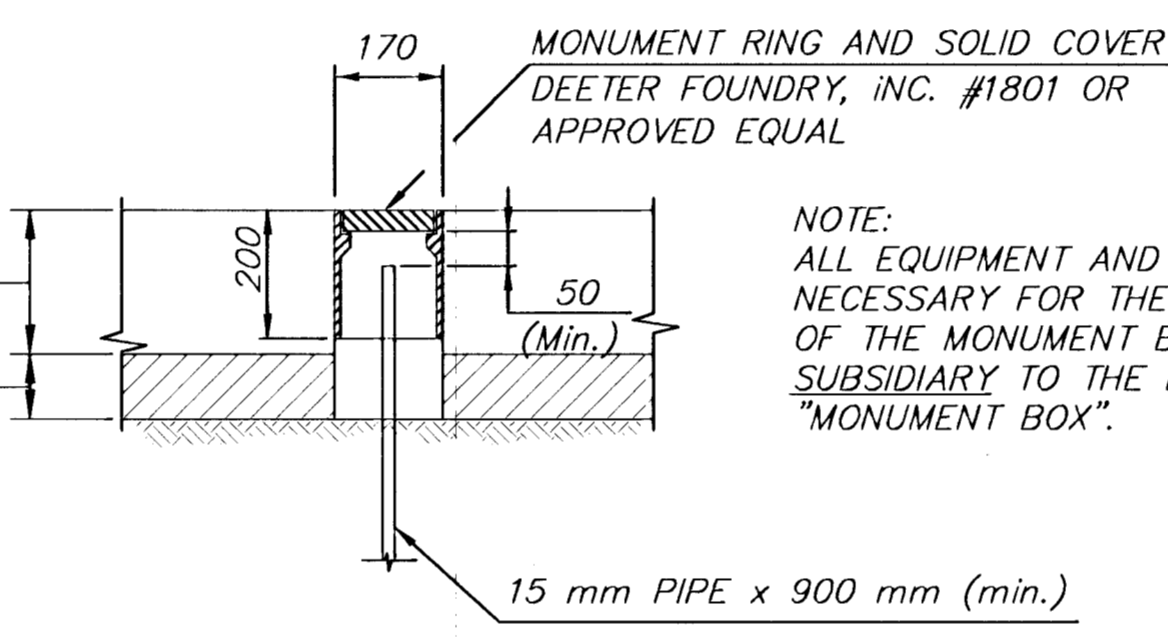


INTERSECTION PLAN PRE-CAST CONCRETE SERVICE BOX



SECTION A-A SERVICE BOX CONSTRUCTION/INSTALLATION DETAILS

SCALE: 1:200



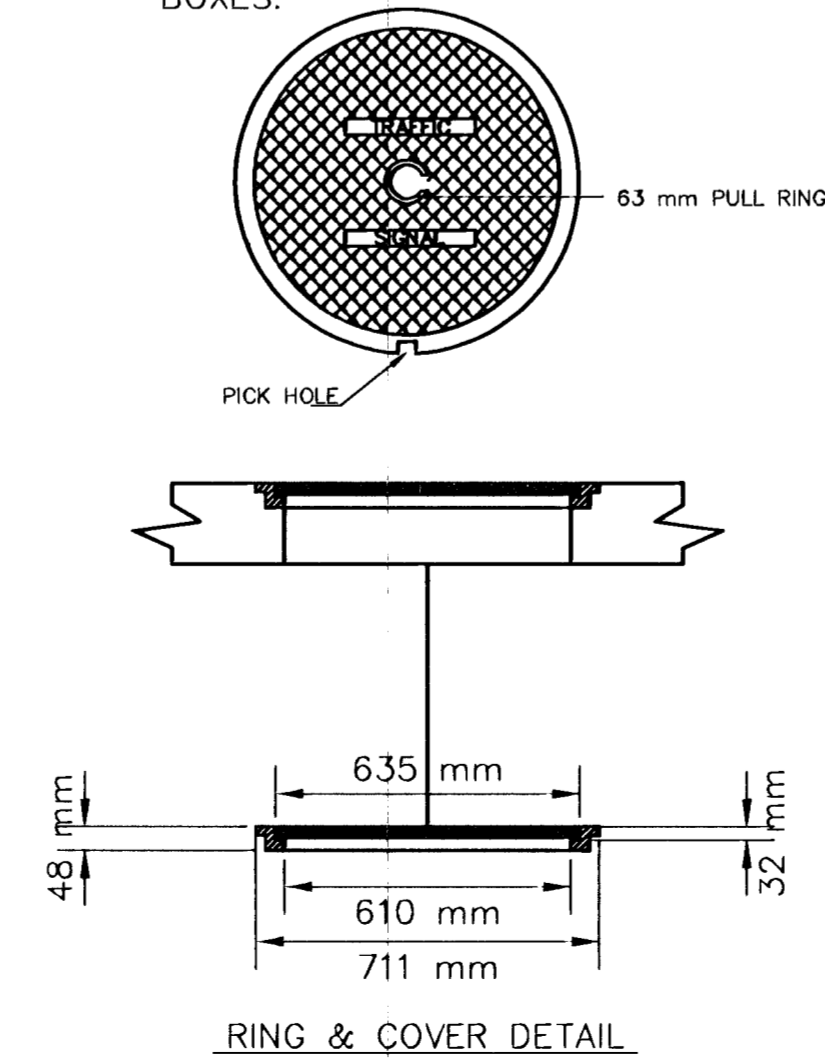
MONUMENT BOX DETAIL

TRENCHING:

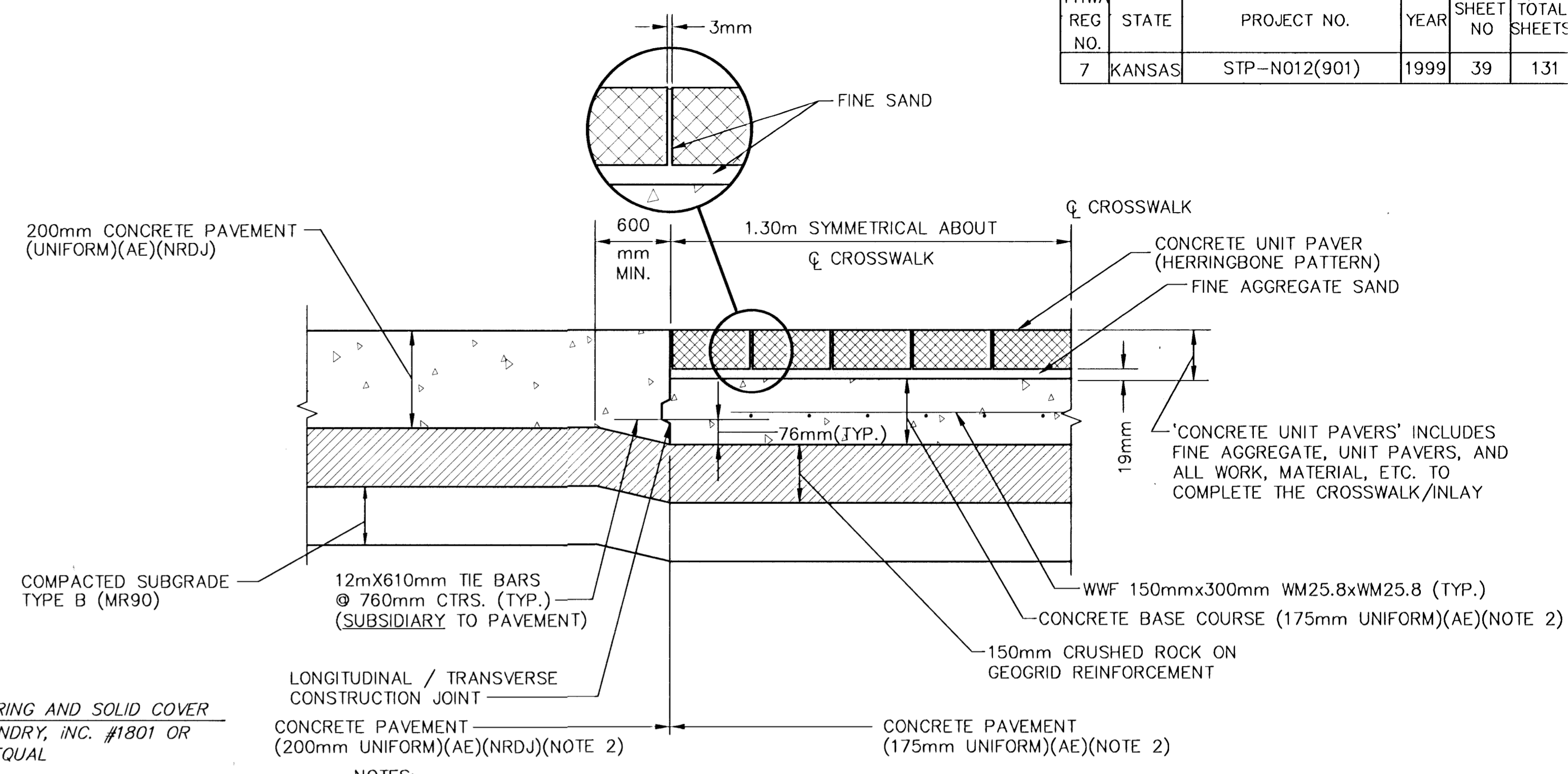
1. DEPTH TO BE 762mm MINIMUM WITH ROCK & STUBBLE FREE BACKFILL TO SERVE AS BEDDING MATERIAL. MAINTAIN MINIMUM CONDUIT DEPTH IN TRENCH.
2. BACKFILL TO BE COMPACTED IN 152mm LOOSE LIFTS BY HAND OR MECHANICAL TAMPING TO A 95% STANDARD DENSITY.

CONDUIT:

1. SLOPE CONDUIT TO DRAIN AS DIRECTED BY THE ENGINEER.
2. 76mm RIGID STEEL CONDUIT BETWEEN SERVICE BOXES.



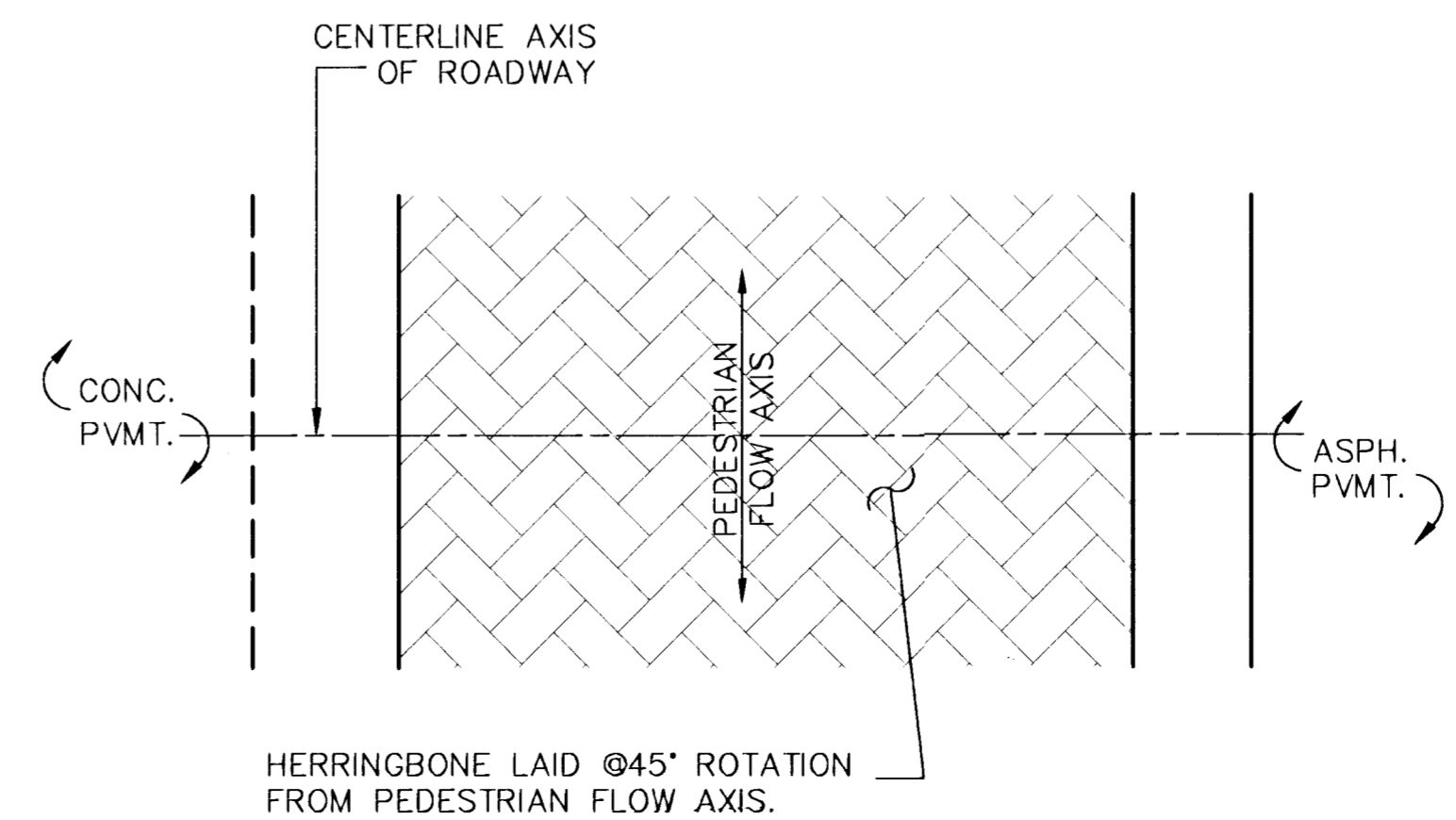
RING & COVER DETAIL



NOTES:

1. CONCRETE PAVING BRICK SHALL BE 80mm MIN. THICKNESS AND MEET OR EXCEED ASTM C-936-82. (ALT.: CLAY BRICKS SHALL BE REPPRESSED CHAMFERED STREET PAVERS, DESIGNED FOR HEAVY VEHICLES. SIZE SHALL BE 102mmx203mmx80mm EXCLUDING CHAMFER, COMPRESSIVE STRENGTH 55,160 kPa MINIMUM, AND ABSORPTION 5% MAXIMUM). PAYMENT SHALL BE AT THE CONTRACT BID PRICE PER SQUARE METER FOR PAVING BRICK.
2. CONCRETE BASE COURSE (175mm UNIFORM)(AE) SHALL BE PAID AT THE BID PRICE FOR CONCRETE PAVEMENT (200mm UNIFORM)(AE)(NRDJ). ADDITIONAL CONCRETE THICKNESS IN TRANSITION TO CROSSWALK SHALL BE SUBSIDIARY TO THE BID PRICE FOR CONCRETE PAVEMENT (200mm UNIFORM)(AE)(NRDJ).
3. ADDITIONAL FORM WORK FOR CONSTRUCTION OF THE PAVING BRICK WILL BE SUBSIDIARY TO THE BID ITEM "PAVING BRICK".
4. SAND BEDDING SHALL MEET THE CITIES REQUIREMENTS FOR FINE AGGREGATE. AN UNCOMPACTED SAND LAYING COURSE SHALL BE SPREAD EVENLY OVER THE AREA TO BE PAVED AND THEN SCREED TO A LEVEL OF APPROXIMATELY 19mm THICKNESS. ONCE SCREEDED AND LEVELED TO THE DESIRED ELEVATION, THE SAND LAYING COURSE SHALL NOT BE DISTURBED IN ANY WAY.
5. THE PAVING BRICK SHALL BE INSTALLED 45 DEGREES TO THE MAJOR AXIS OF THE CROSSWALK BEING PAVED. STONES SHALL BE PLACED WITH THE CHAMFERED SIDE UP, AND JOINT SPACES KEPT UNIFORM APPROXIMATELY 3mm THICK. THE GAPS AT THE EDGE OF THE PAVED SURFACE SHALL BE FILLED WITH STONES CUT TO FIT. CUTTING SHALL BE ACCOMPLISHED TO LEAVE A CLEAN EDGE TOWARD THE TRAFFIC SURFACE, USING A MASONRY SAW. WHENEVER POSSIBLE, NO CUTS SHOULD RESULT WITH A PAVER LESS THAN ONE-THIRD OF ITS ORIGINAL DIMENSION.
6. PAVING BRICK SHALL BE VIBRATED TO THEIR FINAL LEVEL IN THE SAND LAYING COURSE BY TWO OR THREE PASSES OF A VIBRATING COMPACTOR CAPABLE OF 13,344 TO 22,240 NEWTONS COMPACTION FORCE WITH THE SURFACE CLEAN AND JOINTS OPEN.
7. AFTER VIBRATION, CLEAN CONCRETE SAND SHALL BE SPREAD OVER THE PAVING STONE SURFACE, ALLOWED TO DRY, AND VIBRATED INTO THE JOINTS WITH ADDITIONAL PASSES OF THE PLATE VIBRATOR SO AS TO COMPLETELY FILL THE JOINTS. A LIGHT COATING OF SAND SHALL BE SWEEP OVER THE COMPLETED SURFACE AND LEFT TO WEATHER IN.

CROSSWALK DETAILS



PAVING BRICK SCHEDULE	
STYLE	COLOR
PLAZA STONE (TYPE 1)	TERRA-COTTA/CHARCOAL BLEND

2					
1					
NO.	DATE	REVISIONS	BY	APP'D	
KANSAS DEPARTMENT OF TRANSPORTATION					
PAWNEE AVE. AND WEBB ROAD					
INTERSECTION DETAILS					
PROJ. NO. STP-N012(901)					
MKEC ENGINEERING CONSULTANTS, INC.					
WICHITA, KANSAS					
DESIGNED BY:	JTC	CHECKED BY:	JTC		
DRAWN BY:	GJR	DATE:	MAY 1999	SHEET 39 OF 131	