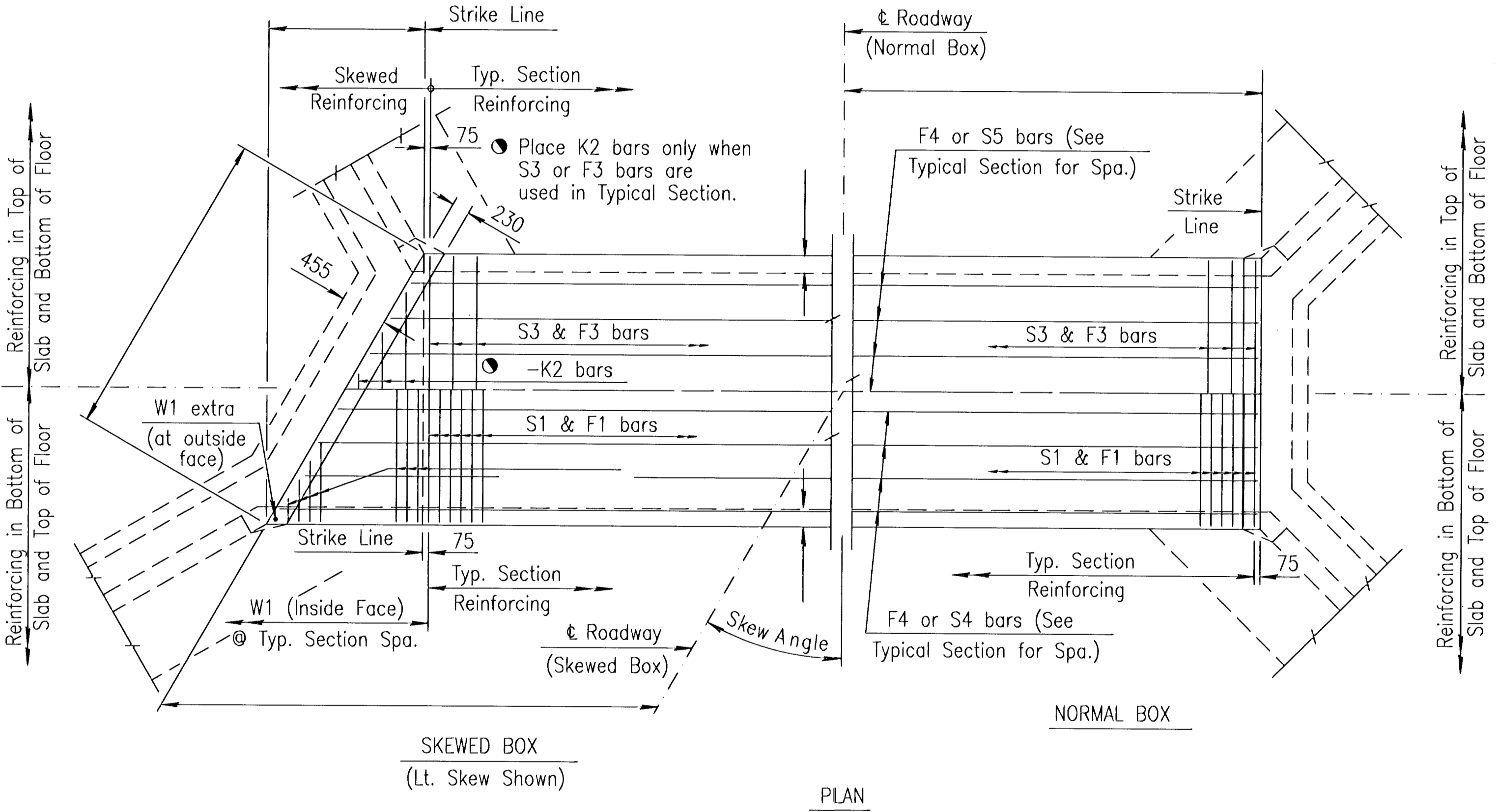
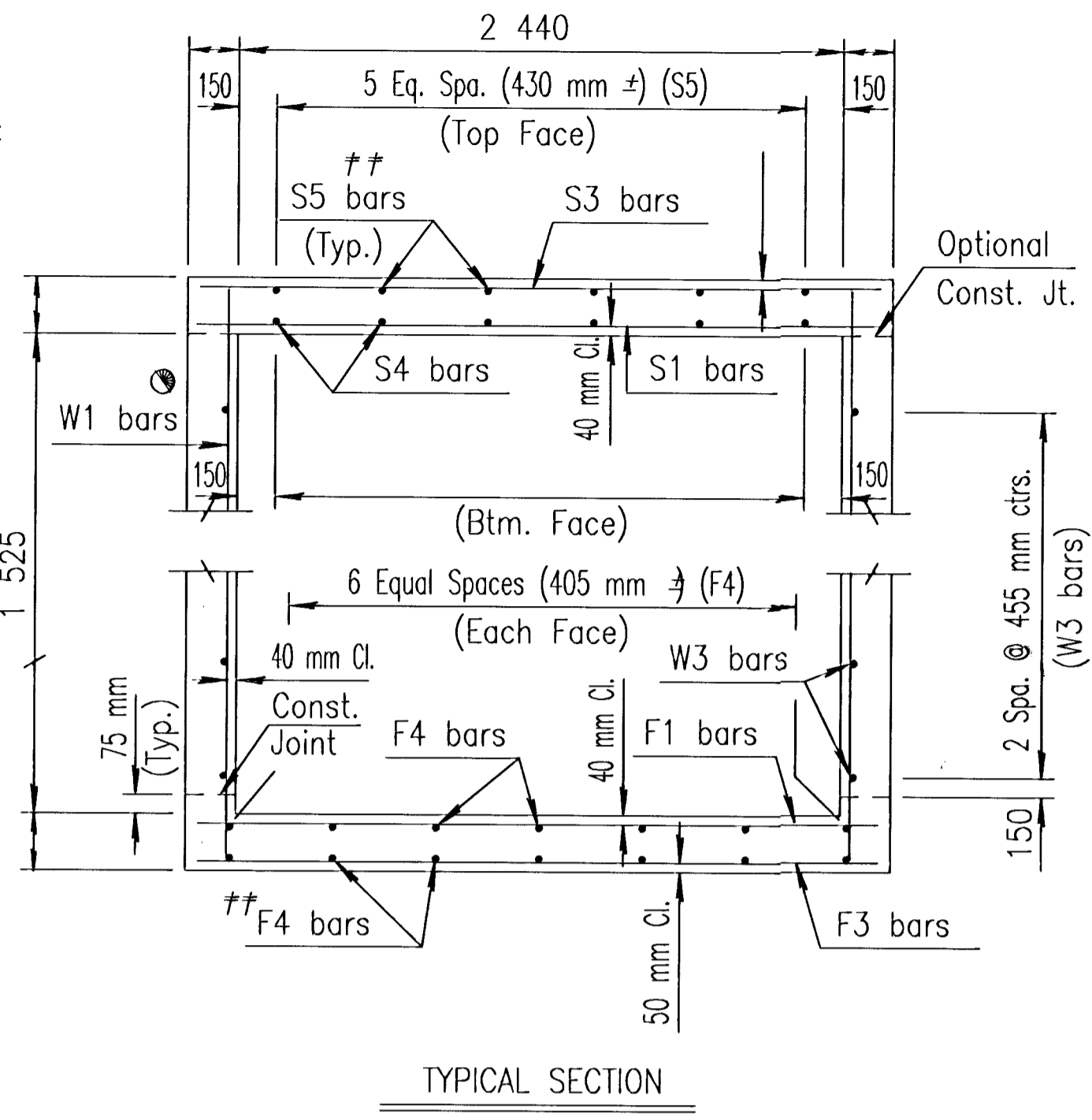
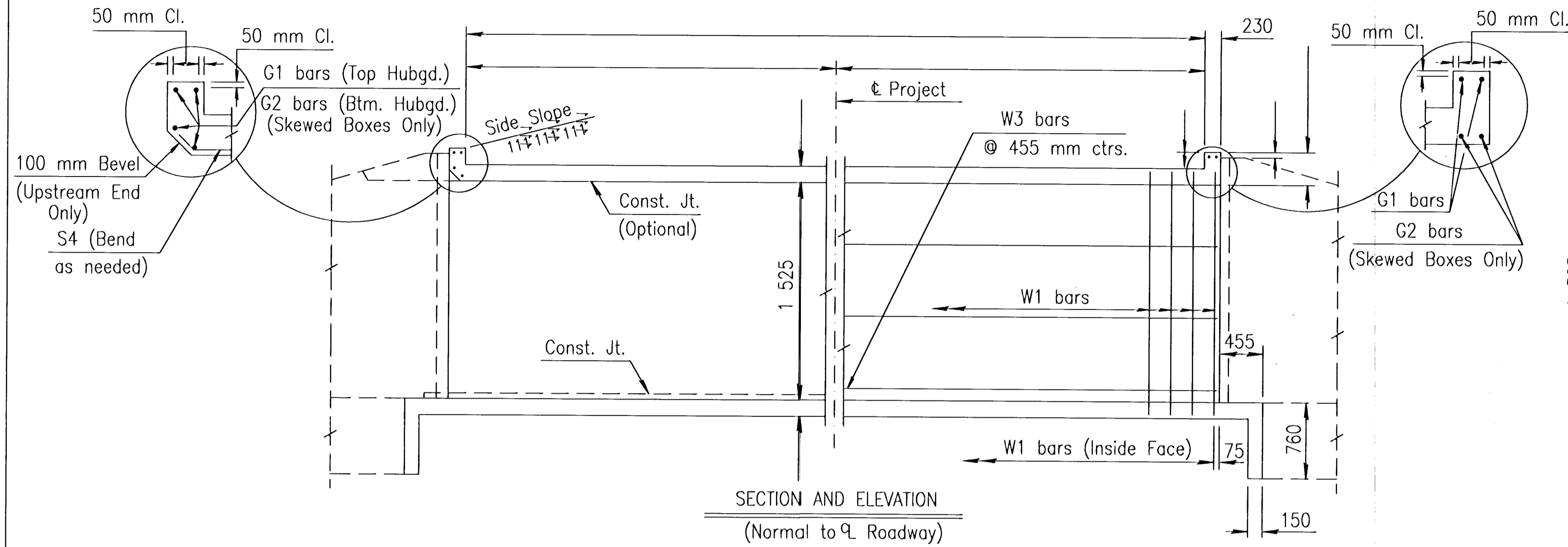


VERSION: 5.1.0m COMPILED: 03/01/95

DATE	BY	REVISION

Drawn By :
 DGN File :
 Plotted :
 View =



FHWA REGION NO.	STATE	PROJECT NO.	YEAR	SHEET NO.	TOTAL SHEETS
7	KANSAS	87STP-N-0129-01	1999	61	131

See RCB Auxillary Details for Optional Splice.

Note:
 S3 bars omitted unless grade box or slab thickness is greater than or equal to 305 mm.
 Note:
 F3 bars omitted unless floor thickness is greater than or equal to 305 mm.
 ±± Omit S5 bars when S3 bars are omitted and omit the bottom layer of F4 bars when F3 bars are omitted.

GENERAL NOTES

DESIGN SPECIFICATION: AASHTO Specifications, 1983 Edition
DESIGN LOADING: MS18-44
UNIT STRESSES: Class AAA Concrete $f'_c = 28$ MPa
 Reinforcing Steel $f_y = 420$ MPa
FILL HEIGHT: Unless otherwise noted, the Design Fill Height is measured from the riding surface at the culvert and includes the surfacing.
CONCRETE: Use concrete conforming to Class AAA Concrete. Bevel all exposed edges with a 20 mm triangular molding. Where Class AAA(AE) is specified, place this concrete in the top slab above the Construction Joint.
REINFORCING: Use reinforcing steel conforming to ASTM A615M, Grade 420. All dimensions relative to reinforcing steel are to the centerline of the bar unless otherwise noted.
EXCAVATION: Excavation for culverts less than bridge length shall not be paid for directly but shall be subsidiary to Class AAA Concrete. Excavation for RCB bridges shall be paid for as Class III Excavation.
SEAL COURSE: The Engineer may require a seal course. The seal course shall be unreinforced Concrete(Commercial Grade) with a minimum depth of 75 mm or as determined by the Engineer. Concrete for the seal course shall be paid for at the unit price set for Concrete for Seal Course.
FOUNDATION STABILIZATION: The Engineer may require Foundation Stabilization. The Engineer shall determine the depth of Foundation Stabilization. Foundation Stabilization shall be paid for at the unit price set for Foundation Stabilization. See the "Auxiliary Details" sheet.
QUANTITIES: The quantities shown in the Culvert Summary include apron and/or soil saver quantities when they are required by the plans. Payment for additional quantities that result from including a seal course and/or a floating apron, as a change in the original plans, shall be made at the unit price bid for the various items involved.
GRANULAR BACKFILL (WINGWALLS): The Engineer may require special backfill procedures. See the "Auxiliary Details" sheet.
STRIKE LINE: Construct the wingwalls and that portion of the RCB outside the Strike Line level. Construct the wingwall footings with the culvert floor. See the wingwall detail sheets.

CULVERT SUMMARY															
Flow Line Elev. Lt. (m)	Flow Line Elev. Rt. (m)	Crown Gr. Elev. (m)	Design Fill Ht. (m)	Skew	Left Wings	Right Wings	Scour Apron	Soil Saver	Granular Backfill	Concrete			Reinf. Steel (Gr. 420)		
										Barrel (m ²)	Wings (m ²)	Total (m ²)	Barrel (kg)	Wings (kg)	Total (kg)
54.550	54.700	57.300	0.9	0	FLARED	FLARED	YES	NO	NO	53.4	12.0	65.4	3649	525	4175

BAR SCHEDULE																												
F1				F3				F4				Δ S1				Δ S3				Δ S4			Δ S5					
Size	Spa.	No.	Length	Size	Spa.	No.	Length	Size	Spa.	No.	Length	Size	Spa.	No.	Length	Size	Spa.	No.	Length	Size	Spa.	No.	Length	Size	Spa.	No.	Length	
20	150	204	2 640	-	-	-	-	12	21	10 440	20	150	204	2 640	-	-	-	-	-	-	-	-	12	18	10 440	-	-	-
Δ K1				Δ K2				W1				W3				Δ G1			Δ G2									
-	-	-	-	-	-	-	-	12	230	266	1 905	-	-	-	-	12	18	10 440	-	-	-	-	15	4	2 640	-	-	-

Minimum Splice Lengths	
#12	405
#15	510
#20	610

SUMMARY OF QUANTITIES	
Class AAA Concrete	46.2 m ²
Class AAA Concrete (AE)	19.3 m ²
Reinforcing Steel (Gr. 420)	2700 kg
Reinforcing Steel (Epoxy Coated)	1470 kg
Class III Excavation	m ²
Foundation Stabilization (Set)	1 m ²
Concrete for Seal Course (Set)	1 m ²
Granular Backfill (Wingwalls) (Set)	1 m ²

NO.	DATE	REVISIONS	BY	APP'D
KANSAS DEPARTMENT OF TRANSPORTATION Sta. 4+615.00 SINGLE 2.4 m x 1.5 m RCB				
BR1.8.5 SI				
FHWA APPROVAL		6-5-91 APP'D		KENNETH F. HURST
DESIGNED	DETAIL	QUANTITIES	TRACE	
DESIGN CK.	DETAIL CK.	QUAN. CK.	TRACE CK.	
				61 OF 131