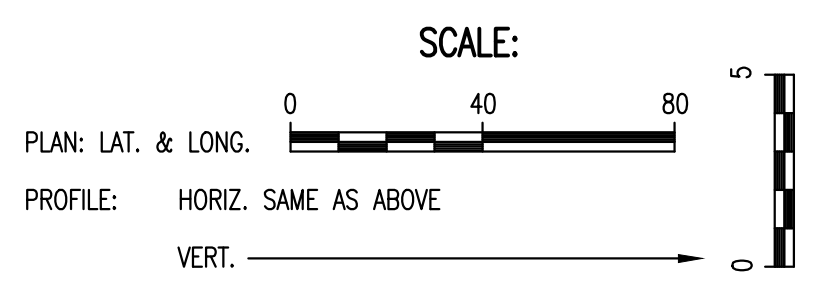
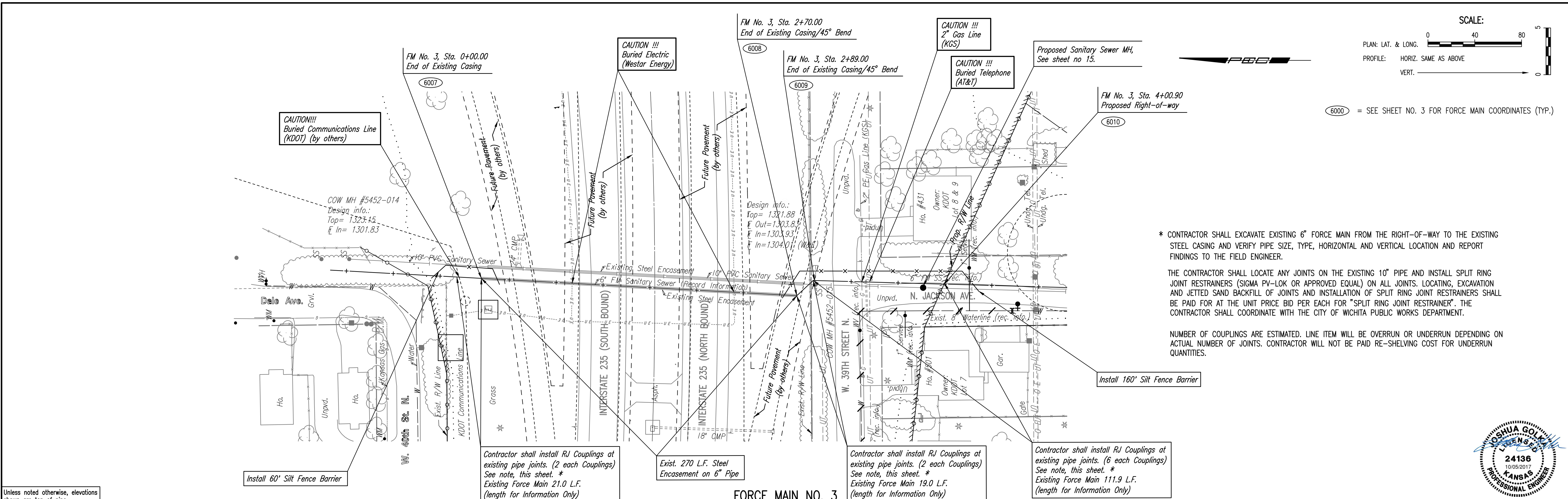


PLAN	CHECKED	DATE
	CHECKED	

PROFILE	CHECKED	DATE
	CHECKED	

Saved 10-03-2017 1:45:22 PM by CSI
 Plot Scale 1:1 10-06-2017 8:04:33 AM by CATHY LUKK
 U:\Wichita-Civil\2016\160127-000\Wm\Drawings\160127-000-C14 FORCE MAIN NO. 3



6000 = SEE SHEET NO. 3 FOR FORCE MAIN COORDINATES (TYP.)

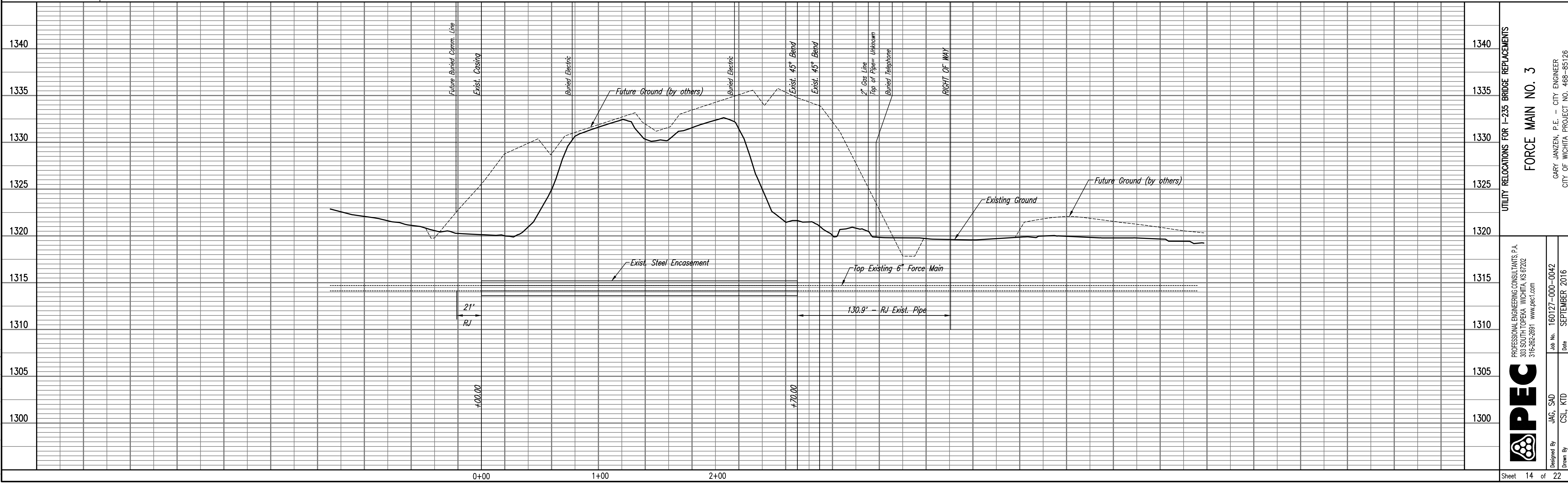
* CONTRACTOR SHALL EXCAVATE EXISTING 6" FORCE MAIN FROM THE RIGHT-OF-WAY TO THE EXISTING STEEL CASING AND VERIFY PIPE SIZE, TYPE, HORIZONTAL AND VERTICAL LOCATION AND REPORT FINDINGS TO THE FIELD ENGINEER.

THE CONTRACTOR SHALL LOCATE ANY JOINTS ON THE EXISTING 10" PIPE AND INSTALL SPLIT RING JOINT RESTRAINERS (SIGMA PV-LOK OR APPROVED EQUAL) ON ALL JOINTS. LOCATING, EXCAVATION AND JETTED SAND BACKFILL OF JOINTS AND INSTALLATION OF SPLIT RING JOINT RESTRAINERS SHALL BE PAID FOR AT THE UNIT PRICE BID PER EACH FOR "SPLIT RING JOINT RESTRAINER". THE CONTRACTOR SHALL COORDINATE WITH THE CITY OF WICHITA PUBLIC WORKS DEPARTMENT.

NUMBER OF COUPLINGS ARE ESTIMATED. LINE ITEM WILL BE OVERRUN OR UNDERRUN DEPENDING ON ACTUAL NUMBER OF JOINTS. CONTRACTOR WILL NOT BE PAID RE-SHELVING COST FOR UNDERRUN QUANTITIES.



Unless noted otherwise, elevations shown are top of pipe



UTILITY RELOCATIONS FOR I-235 BRIDGE REPLACEMENTS
FORCE MAIN NO. 3

PROFESSIONAL ENGINEERING CONSULTANTS P.A.
 303 SOUTH TOPEKA WICHITA, KS 67202
 316-262-2691 www.pec.com

DESIGNED BY: JAG, SAU
 DRAWN BY: CSL, KTD

Job No. 160127-000-0042
 Date SEPTEMBER 2016

GARY JANZEN, P.E. - CITY ENGINEER
 CITY OF WICHITA PROJECT NO. 468-85126