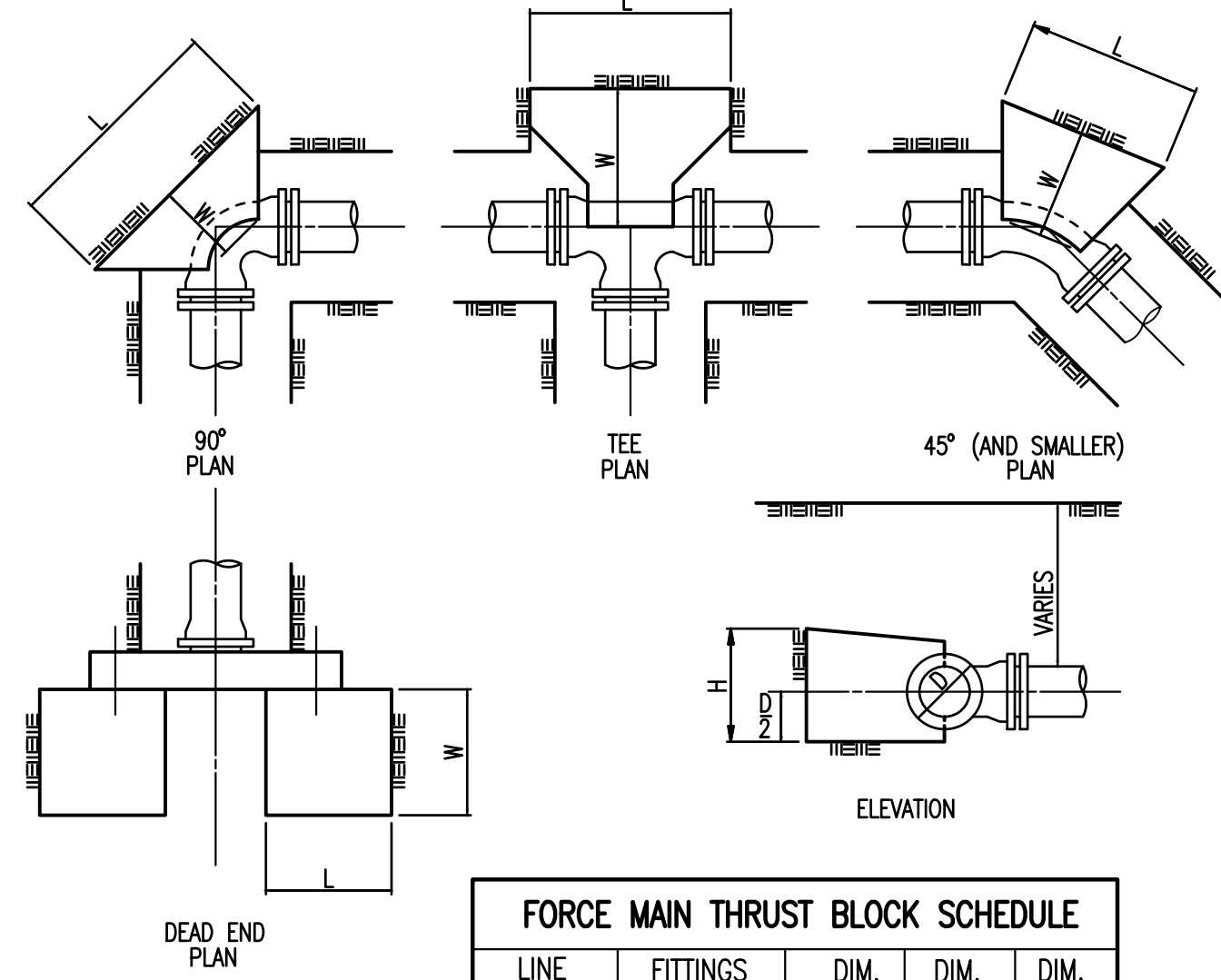


PLAN  
 CHECKED  
 CHECKED  
 BY  
 DATE



FORCE MAIN THRUST BLOCK SCHEDULE				
LINE SIZE	FITTINGS & ANGLE	DIM. H	DIM. W	DIM. L
10"	22 1/2"	1'-11"	1'-11"	1'-11"

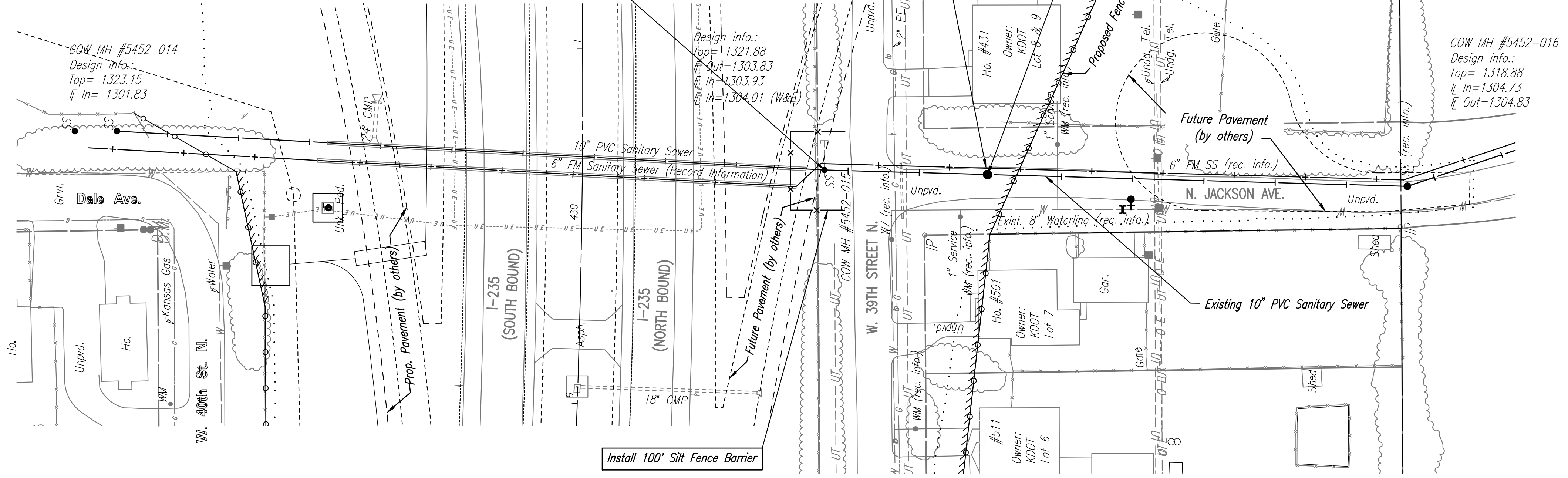
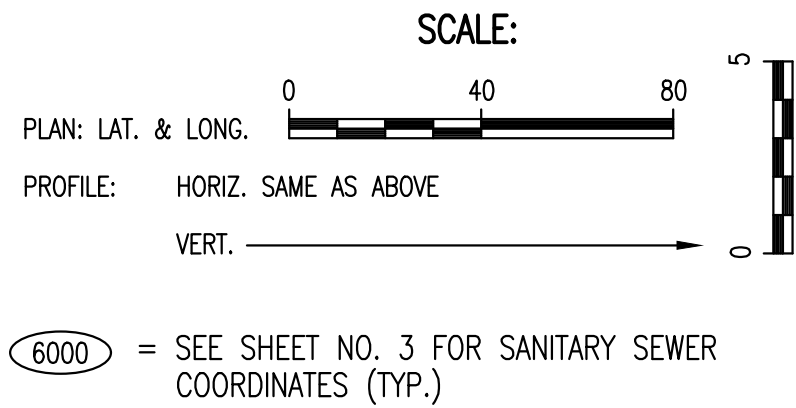
**SANITARY SEWER NOTES:**

1. THE CONTRACTOR SHALL COORDINATE WITH LARRY KOONTZ AT (316)708-6678 OR LUCIUS HOWLAND AT (316)312-6263. CONCERNING ITEMS TO BE SALVAGED. ANY ITEMS TO BE SALVAGED SHALL BE CLEANED AND DELIVERED TO THE CITY. ITEMS TO BE DISPOSED OF AS DIRECTED BY THE CITY SHALL BE DISPOSED OF IN AN ACCEPTABLE LOCATION.
2. CONTRACTOR SHALL NOT DIVERT ANY SEWAGE FLOW THROUGH NEW PIPE OR MANHOLES UNTIL TESTING HAS BEEN COMPLETED AND ACCEPTED.
3. CONTRACTOR SHALL BE RESPONSIBLE FOR MAINTAINING CONTINUOUS FLOW OF SEWAGE THROUGH CONSTRUCTION. CONTRACTOR'S PROPOSED METHOD FOR MAINTAINING SEWAGE FLOW SHALL BE APPROVED BY THE ENGINEER. COST OF MAINTAINING FLOW OF SEWAGE THROUGH CONSTRUCTION WILL NOT BE PAID FOR DIRECTLY AND SHALL BE CONSIDERED SUBSIDIARY TO OTHER RELATED ITEMS OF WORK.

- \* PRIOR TO BEGINNING CONSTRUCTION, THE CONTRACTOR SHALL EXCAVATE THE EXISTING 10" SANITARY SEWER AT SS 1, STA. 0+00.00 AND SS 1, STA. 0+92.00 TO VERIFY PIPE SIZE, TYPE, FITTINGS, AND HORIZONTAL AND VERTICAL LOCATION. THE CONTRACTOR SHALL REPORT HIS FINDINGS TO THE ENGINEER SO THAT ANY NECESSARY PLAN MODIFICATIONS CAN BE MADE. ANY ADDITIONAL LABOR OR MATERIALS NECESSARY TO COMPLETE THE CONNECTION SHALL BE CONSIDERED SUBSIDIARY TO THE PROJECT.
- \*\* THE CONTRACTOR WILL BE RESPONSIBLE FOR PROTECTING AND SUPPORTING THE EXISTING 6" FORCE MAIN DURING MH REMOVAL. ANY ADDITIONAL WORK TO PROTECT/SUPPORT THE EXISTING FORCE MAIN SHALL BE CONSIDERED SUBSIDIARY TO THE PROJECT.

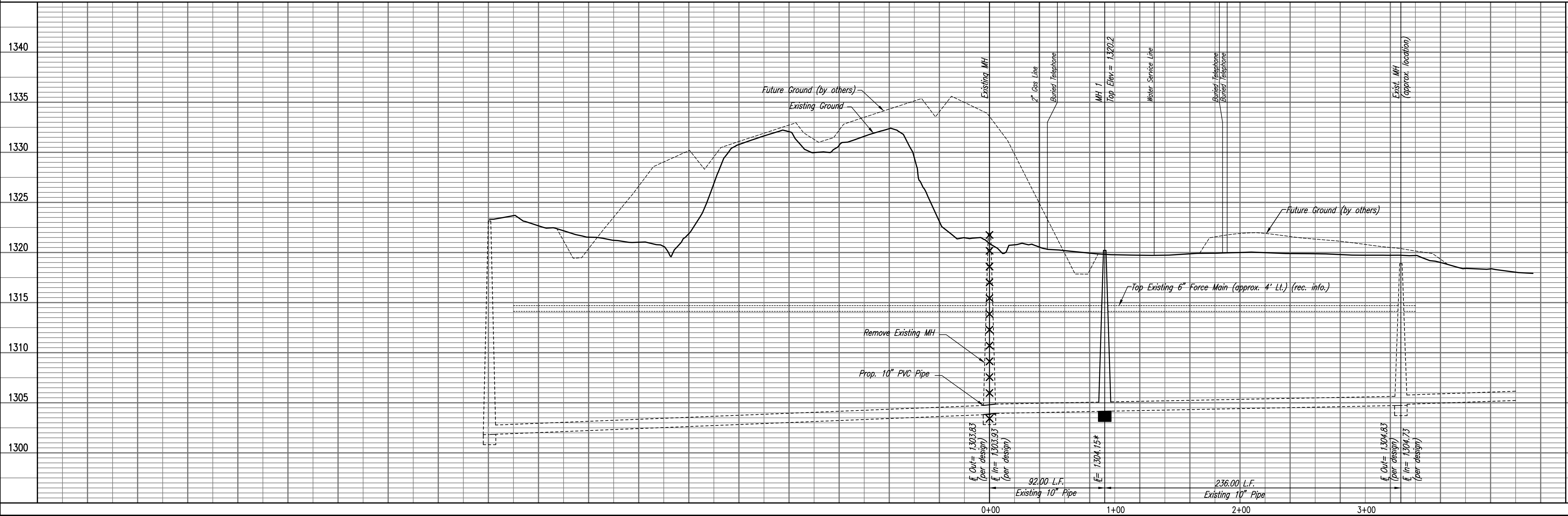
① I-235, Sta. 430+33.60, 136.3' Rt. =  
 SS 1, Sta. 0+00.00  
 Remove existing MH per City of Wichita Standards. Salvage existing MH lid and frame to City of Wichita Maintenance Yard.  
 Install 5 L.F. 10" PVC Pipe  
 Contractor shall connect new pipe to existing pipe with PVC couplings or an approved equal per City of Wichita Standard and Special Provisions. Any additional labor or materials necessary to complete the connection shall be considered subsidiary to the Project. \*\*

② I-235, Sta. 430+32.41, 228.2' Rt. =  
 SS 1, Sta. 0+92.00  
 Const. MH 1  
 Standard MH (5' dia.)  
 Existing 10" PVC Sanitary Sewer \*  
 Construct MH 1 over existing 10" pipe. Remove top half of 10" pipe thru MH. Shape invert to pipe.



**SANITARY SEWER LINE NO. 1**

PROFILE  
 CHECKED  
 CHECKED  
 BY  
 DATE



UTILITY RELOCATIONS FOR I-235 BRIDGE REPLACEMENTS  
**SANITARY SEWER LINE NO. 1**  
 GARY JANZEN, P.E. - CITY ENGINEER  
 CITY OF WICHITA PROJECT NO. 468-85126

PROFESSIONAL ENGINEERING CONSULTANTS P.A.  
 303 SOUTH TOPEKA WICHITA, KS 67202  
 316-262-2691 www.pec1.com

**PEC**

Job No. 160127-000-0042  
 Date SEPTEMBER 2016

Designed By JAG, SAU  
 Drawn By CSL, KTD

Saved 10-03-2017 1:44:57 PM by CSI  
 Plot Scale 1:1 10-06-2017 8:04:50 AM by CATHY LINK  
 U:\Wichita-Civil\2016\160127\000\Wm\Drawings\160127-000-015 SS Line