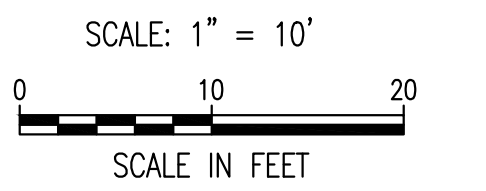
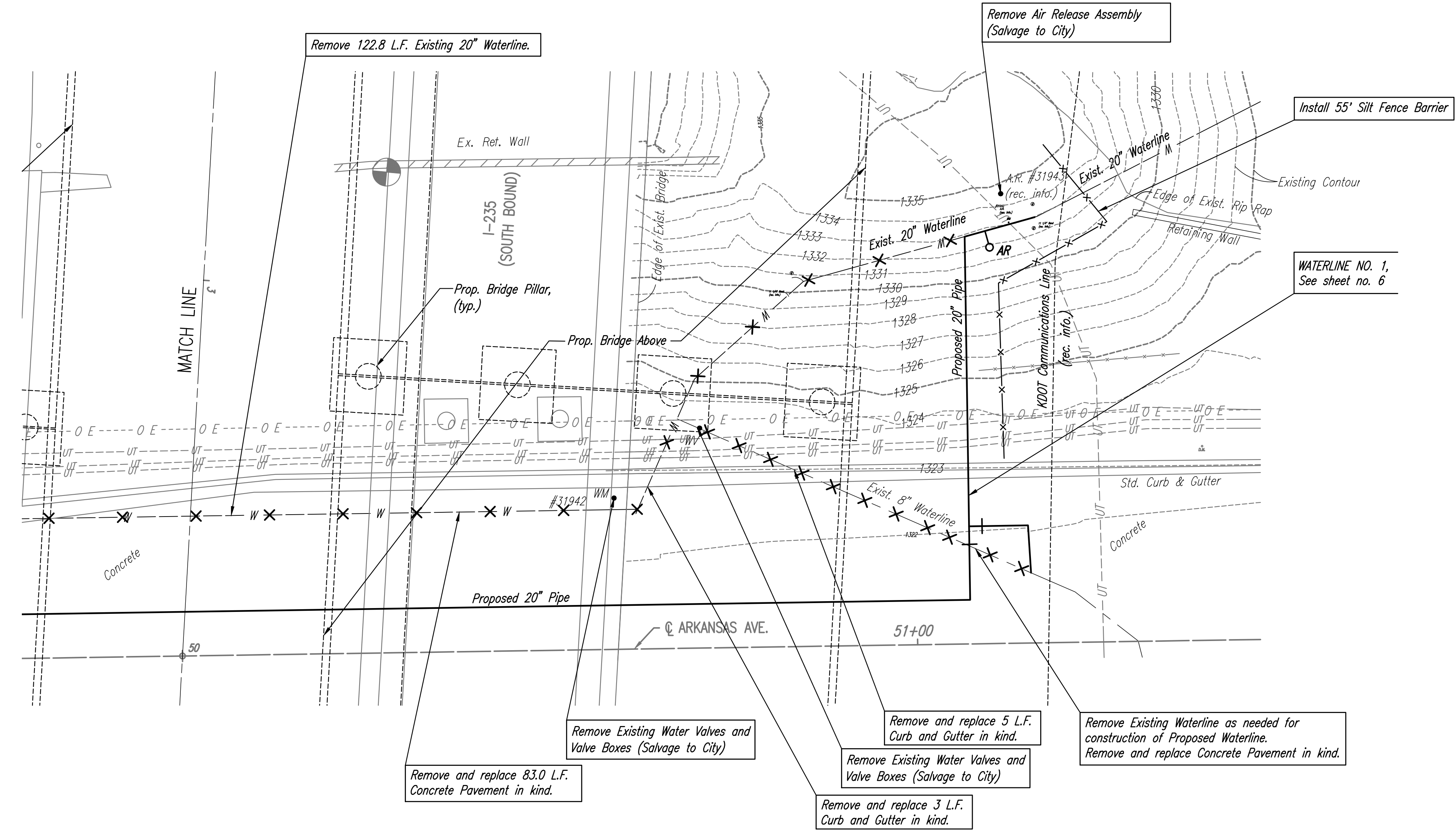


WATERLINE NO. 1,
See sheet no. 5

WATERLINE NO. 2,
See sheet no. 7

Remove Existing Waterline as needed for
construction of Proposed Waterline.
Remove and replace Asphalt Pavement in kind.

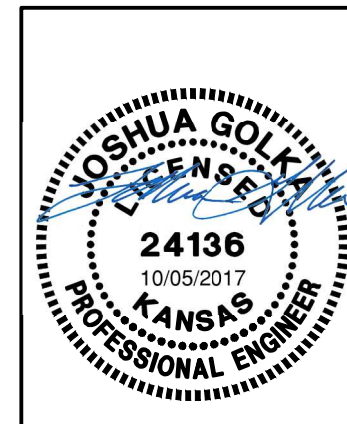
Remove and replace 35 L.F.
Curb and Gutter in kind.



① ANY OVER EXCAVATION FROM PIPE REMOVAL SHALL BE BACKFILLED WITH JETTED SAND BACKFILL PER THE CITY OF WICHITA STANDARD SPECIFICATIONS AND SPECIAL PROVISIONS.

— = DENOTES PIPE TO BE ABANDONED IN PLACE.
 X = DENOTES PIPE TO BE REMOVED. ①
 C = DENOTES CAP/PLUG BY THE CONTRACTOR

Served 10-03-2017 1:37:32 PM by CSI
 Plot Scale 1:1 10-05-2017 8:02:13 AM by CSI
 U:\Wichita-Civil\2016\160127\000\Drawings\160127-000-WATERLINE DEMOLITION PLAN



No.	Revision	By	Date
UTILITY RELOCATIONS FOR I-235 BRIDGE REPLACEMENTS DEMOLITION PLAN (WATERLINE NO. 1) GARY JANZEN, P.E. - CITY ENGINEER CITY OF WICHITA PROJECT NO. 448-90739			
PROFESSIONAL ENGINEERING CONSULTANTS, P.A. 303 SOUTH TOPEKA WICHITA, KS 67202 316-262-2691 www.pec1.com			
Designed by	JAG, SAD	Job No.	160127-000-042
Drawn by	CSL, KTD	Date	SEPTEMBER 2016
			Sht. 4 of 22