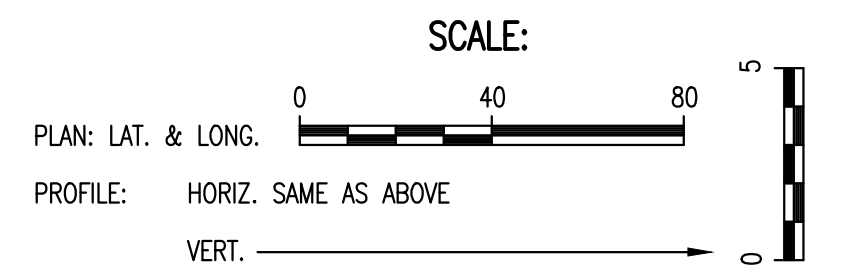
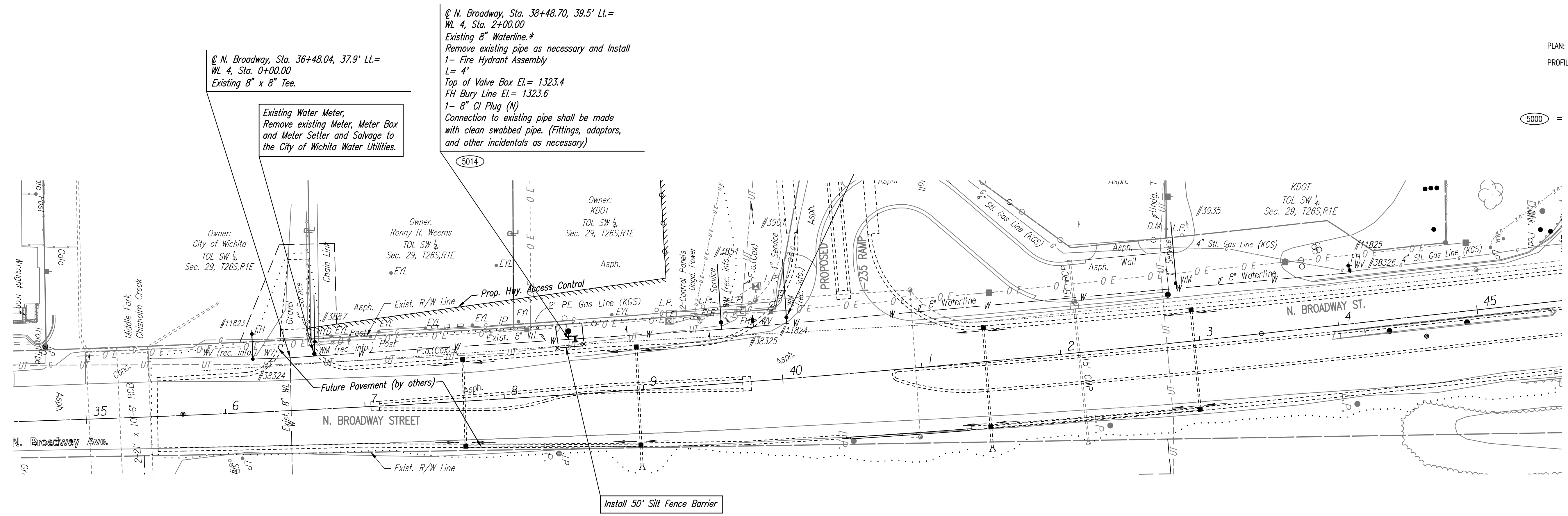


PLAN	CHECKED	DATE
	CHECKED	

PROFILE	CHECKED	DATE
	CHECKED	

Saved: 10-03-2017 1:40:02 PM by CSI
 Plot Scale: 1" = 10'-06" (2017 8:03:19 AM) by CATHY LINK
 U:\Wichita-Civil\2016\160127\000\Wm\Drawings\160127-000-008 WATERLINE NO. 4

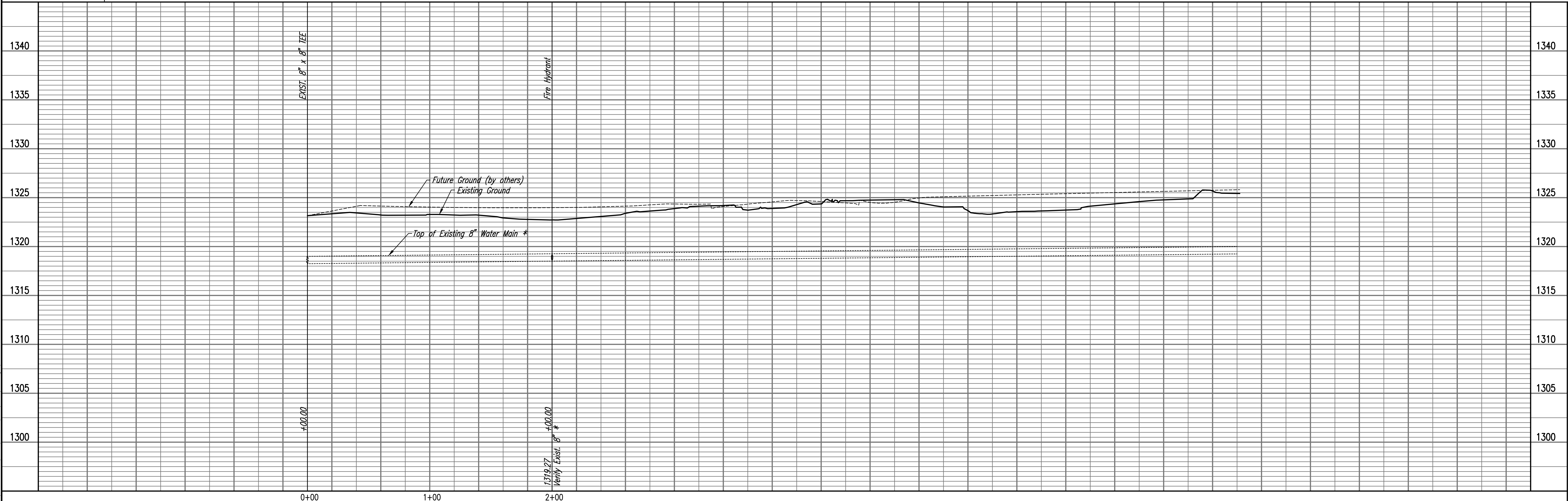


(5000) = SEE SHEET NO. 3 FOR WATERLINE COORDINATES (TYP.)

Unless noted otherwise, elevations shown are top of pipe

WATERLINE NO. 4

* PRIOR TO BEGINNING CONSTRUCTION, THE CONTRACTOR SHALL EXCAVATE THE EXISTING 8" WATERLINE AT WL 4, STA. 2+00.00 TO VERIFY PIPE SIZE, TYPE, FITTINGS, AND HORIZONTAL AND VERTICAL LOCATION. THE CONTRACTOR SHALL REPORT FINDINGS TO THE ENGINEER SO THAT ANY NECESSARY PLAN MODIFICATIONS CAN BE MADE. ANY ADDITIONAL LABOR OR MATERIALS NECESSARY TO COMPLETE THE CONNECTION SHALL BE CONSIDERED SUBSIDIARY TO THE PROJECT.



UTILITY RELOCATIONS FOR I-235 BRIDGE REPLACEMENTS
WATERLINE NO. 4
 GARY JANZEN, P.E. - CITY ENGINEER
 CITY OF WICHITA PROJECT NO. 448-90739

PEC
 PROFESSIONAL ENGINEERING CONSULTANTS P.A.
 303 SOUTH TOPEKA WICHITA, KS 67202
 316-262-2691 www.pec1.com

Designed By: JAG, SAU
 Drawn By: CSL, KTD

Job No.: 160127-000-0042
 Date: SEPTEMBER 2016