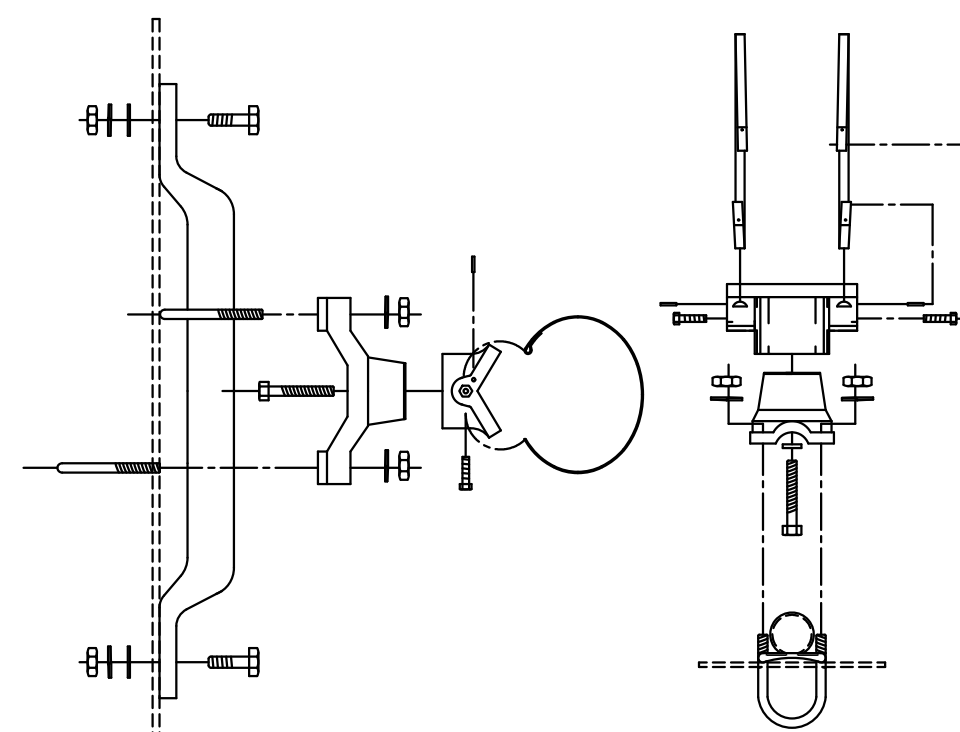
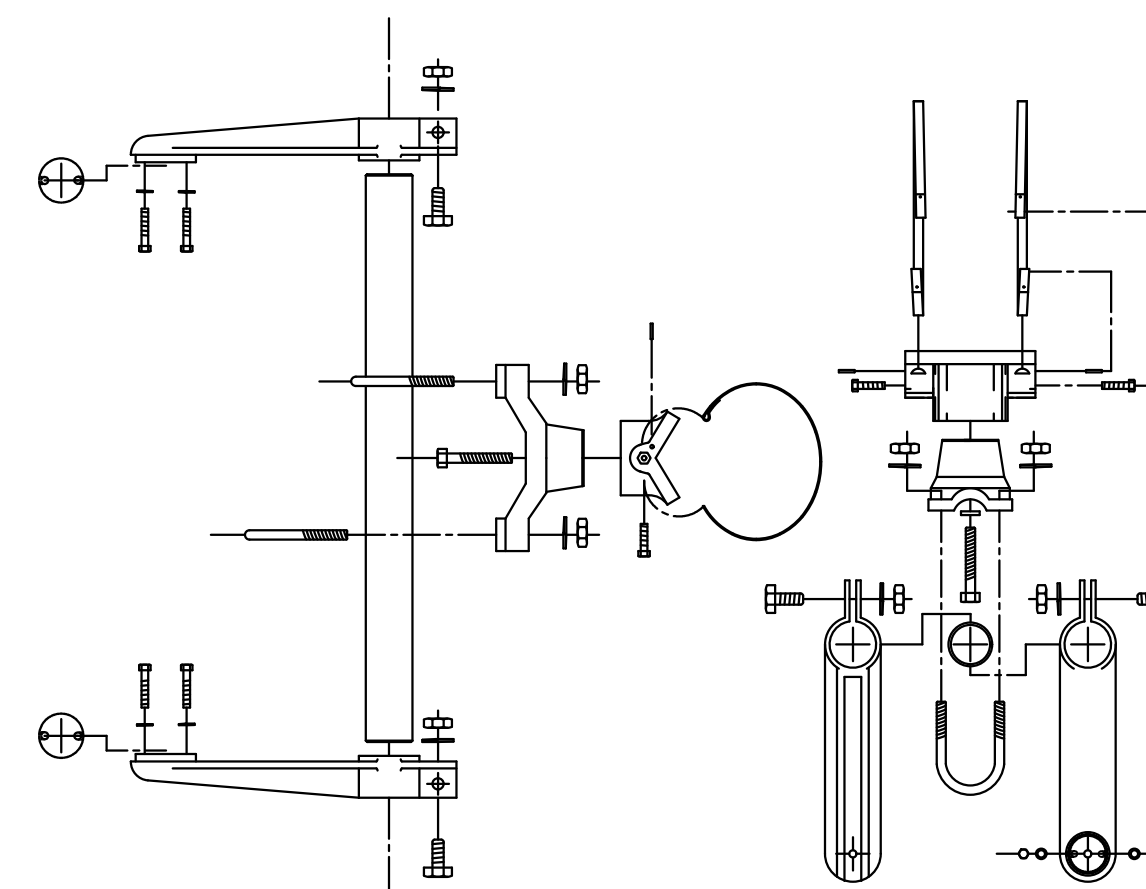


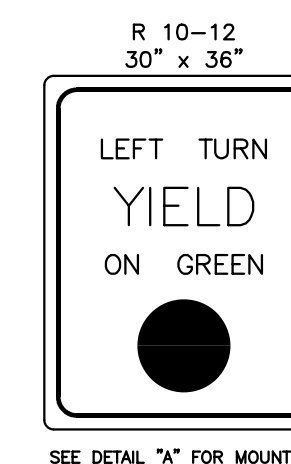
BANDED SIGN MOUNTING BRACKET DETAIL



TYPE I SIGNAL MOUNTING BRACKET ASSEMBLY DETAIL



STANDARD SIGNING



DWG. NO. N45ANG-X

**PUSH BUTTON STATION**

Message and Sound options include:

- Location tone
- Verbal Street Name (Example: Crossing Main at Central)
- All features field selectable using a Configurator.

Construction:

- Die-cast aluminum, powder coated black in color.
- Street Name in Braille in the directional arrow of the sign.
- Option "B" signing option.

Push button:

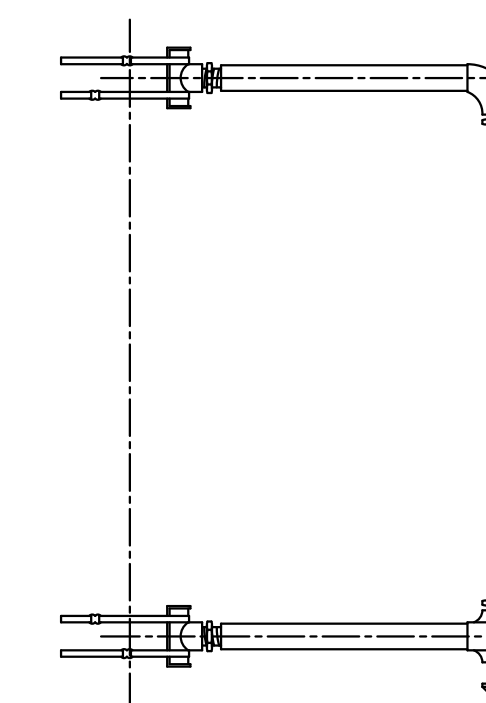
- ADA compliant
- Raised tactile arrow on the button
- Solid State switch rated at a Minimum of 20 million actuations

PLATE MARKING OPTIONS

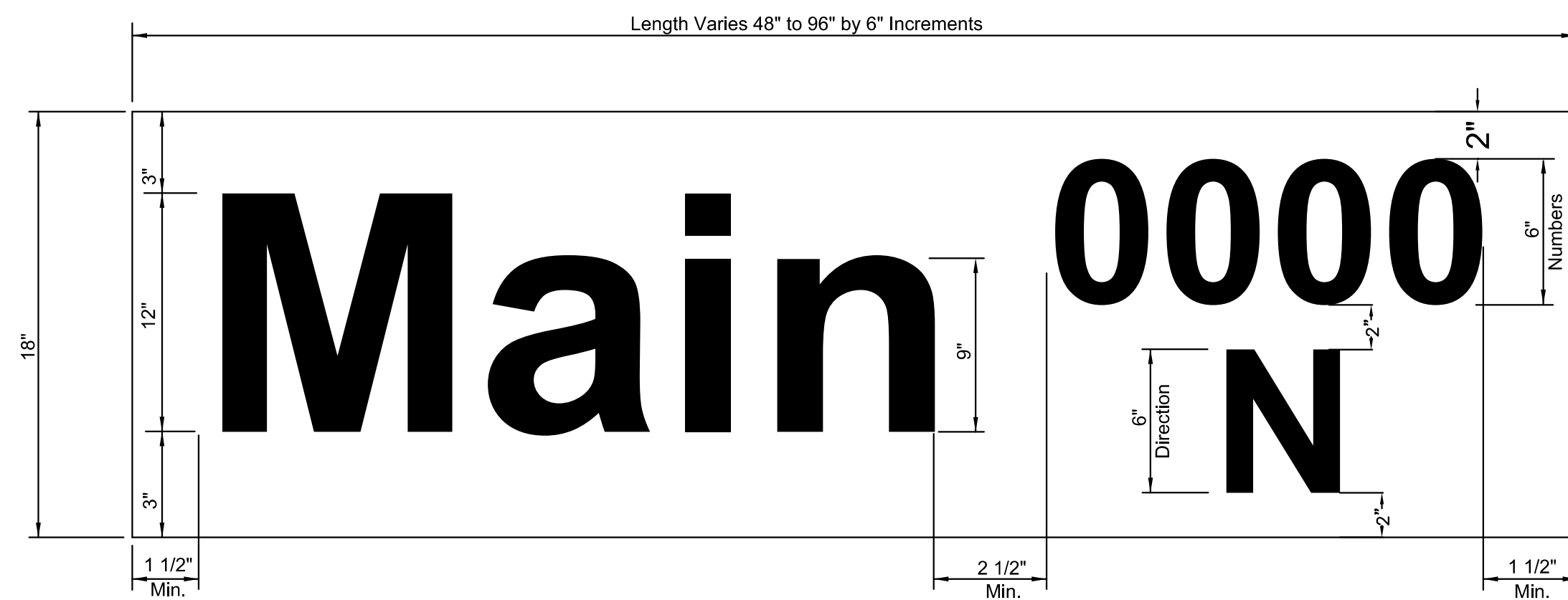
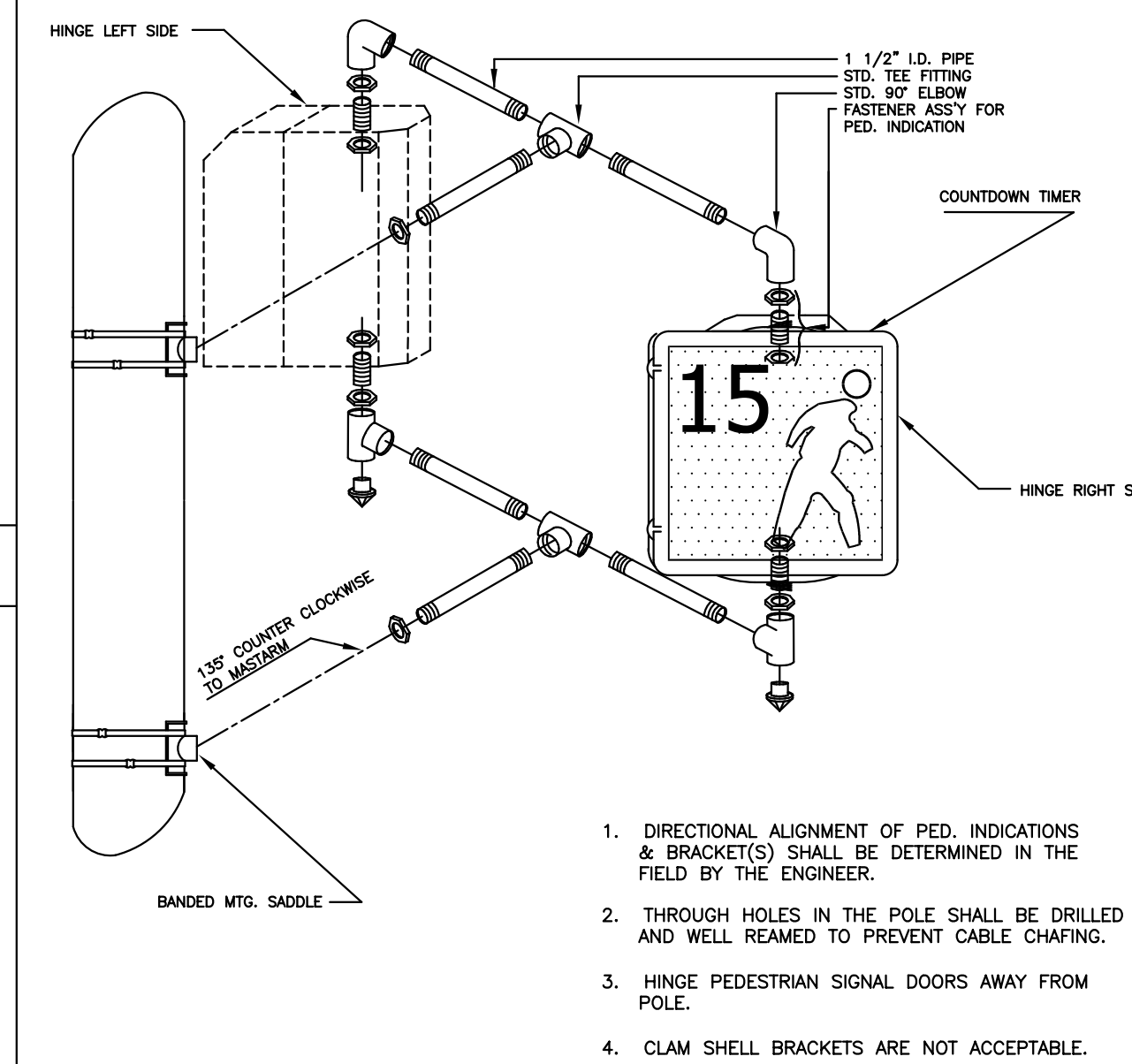
STANDARD OPTION A: PUSH BUTTON FOR [Arrow]

OPTION B: START CROSSING [Arrow] / DON'T START [Arrow] / DON'T CROSS [Arrow] / TO CROSS [Arrow] / PUSH BUTTON [Arrow]

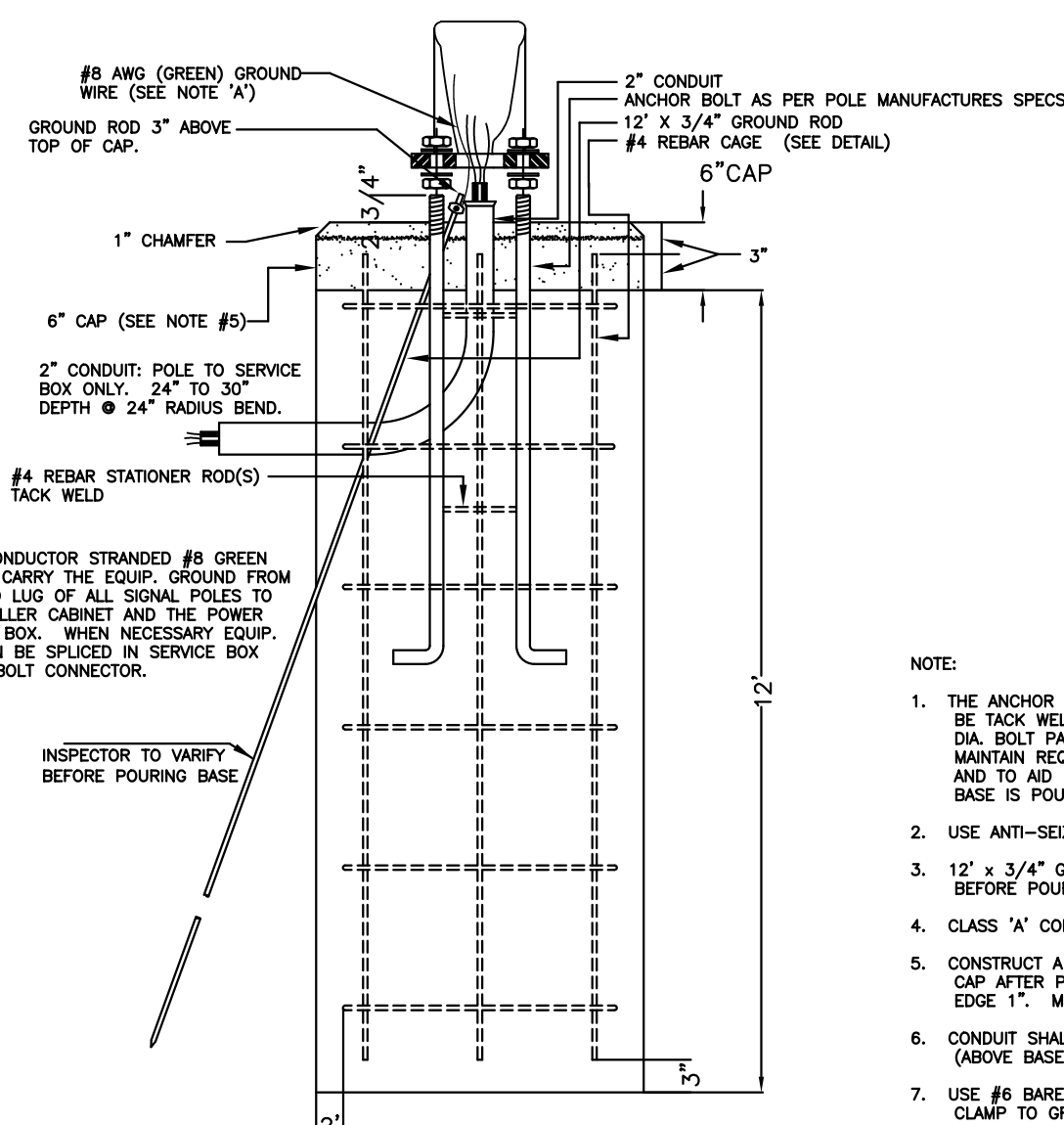
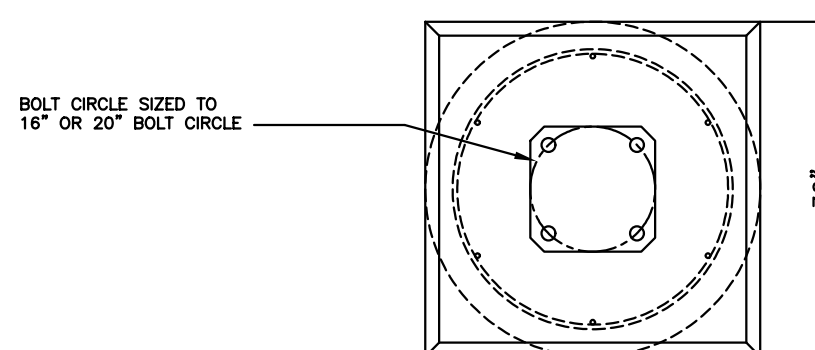
TYPE III SIDE-OF-POLE MOUNTING BRACKET ASSEMBLY



TYPE II SIGNAL MOUNTING BRACKET ASSEMBLY (SIDE-OF-POLE)

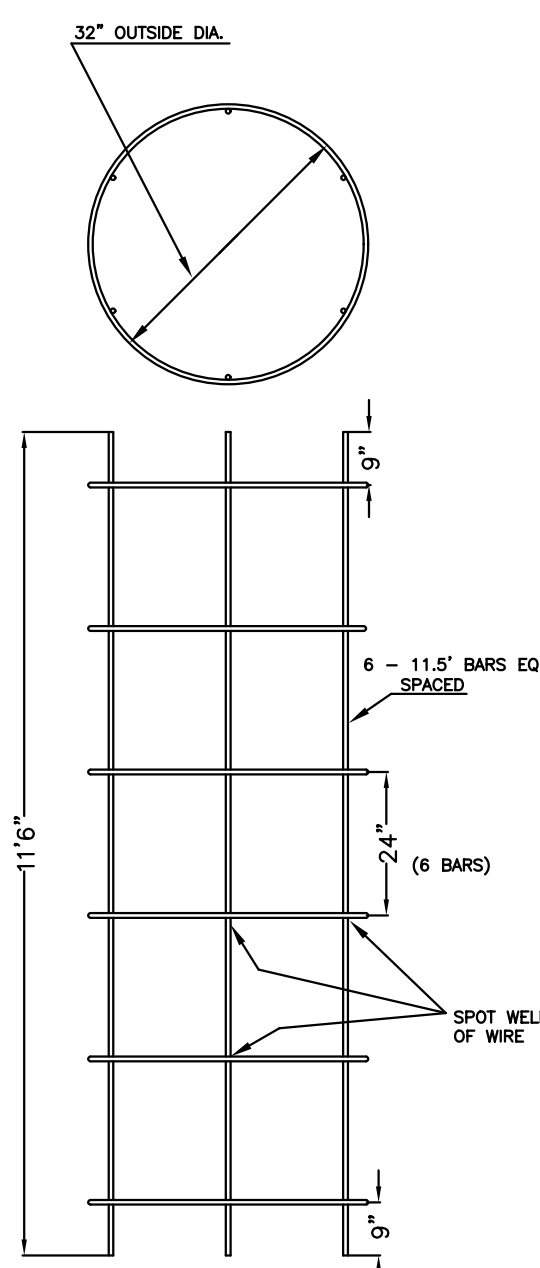


DETAIL D METRO



- NOTE:
1. THE ANCHOR BOLTS FOR THE SIGNAL POLE SHALL BE TACK WELDED TOGETHER IN A 16" OR 20" DIA. BOLT PATTERN (ON CENTERS AS SHOWN) TO MAINTAIN REQUIRED BOLT CONFIGURATION PATTERN AND TO AID IN VERTICAL POSITIONING WHILE CONCRETE BASE IS POURED.
  2. USE ANTI-SEIZE COMPOUND ON ALL THREADS.
  3. 12" X 3/4" GROUND ROD TO BE POSITIONED BEFORE POURING BASE.
  4. CLASS 'A' CONCRETE SHALL BE USED TO CONSTRUCT BASE.
  5. CONSTRUCT A 6" THICK X 36" SQUARE CONCRETE CAP AFTER POLE HAS BEEN ERECTED & PLUMBED. CHAMFER EDGE 1" MUST BE APPROVED BY ENG. BEFORE POURED.
  6. CONDUIT SHALL HAVE PLASTIC (OR METAL) BUSHING (ABOVE BASE) TO PREVENT CABLE CHAFING.
  7. USE #8 BARE COPPER GROUND CONDUCTOR FROM CLAMP TO GROUND BOLT IN ACCESS HOLE.

REBAR CAGE



CITY OF WICHITA

PUBLIC WORKS & UTILITIES ENGINEERING DIVISION

REVISED: AUGUST 2014

**STEEL SIGNAL POLE ASSEMBLY DETAILS**

TRAFFIC ENGINEER  
**BRIAN A. COON, P.E.**

PROJECT NUMBER	OCA NUMBER	DATE
87 N-0616-01	707067	10/9/2017

CITY ENGINEER'S OFFICE  
CITY HALL - SEVENTH FLOOR  
455 NORTH MAIN STREET  
WICHITA, KANSAS 67202-1620  
(316) 268-4501

SHEET  
107 of 166