

All 6" water line shall be restrained joint pipe, unless otherwise noted in the plans.

It is the Contractor's responsibility to contact & coordinate with the utility companies forty-eight (48) hours prior to the installation of the water line to locate any existing utilities that have not been previously located or new utilities that have been relocated.

All water mains and appurtenances shall be installed in accordance with City of Wichita, Kansas, Standard Specifications for Water Main Installations No. PW005240.

Contractor shall not start work on the project until the Project Inspector is assigned to the project and is present on the site. Any work done without inspection will be required to be uncovered for inspection.

Existing utilities and their location, as shown on the plans, represent the best information obtainable for design. The Contractor will be required to work around existing utilities within the right-of-way which do not conflict with proposed construction.

Opening and closing of water valves shall be done slowly to prevent damage to the water distribution system from water hammer. All valves closed by the Contractor must be reopened as new construction permits. Project Inspector must ascertain that any valve closed by the Contractor is reopened. Contractor will be permitted to operate water valves only when the Project Inspector assigned to the project is present.

The bid item "Fire Hydrant Assembly" shall include installation of a New Fire Hydrant, thrust blocking, fittings, riser pipe, and all necessary adjustments required to bring the hydrant into complete and working order. The City of Wichita will supply the 6" Anchored Valve Assembly with the hot tap located at the existing 8" water main.

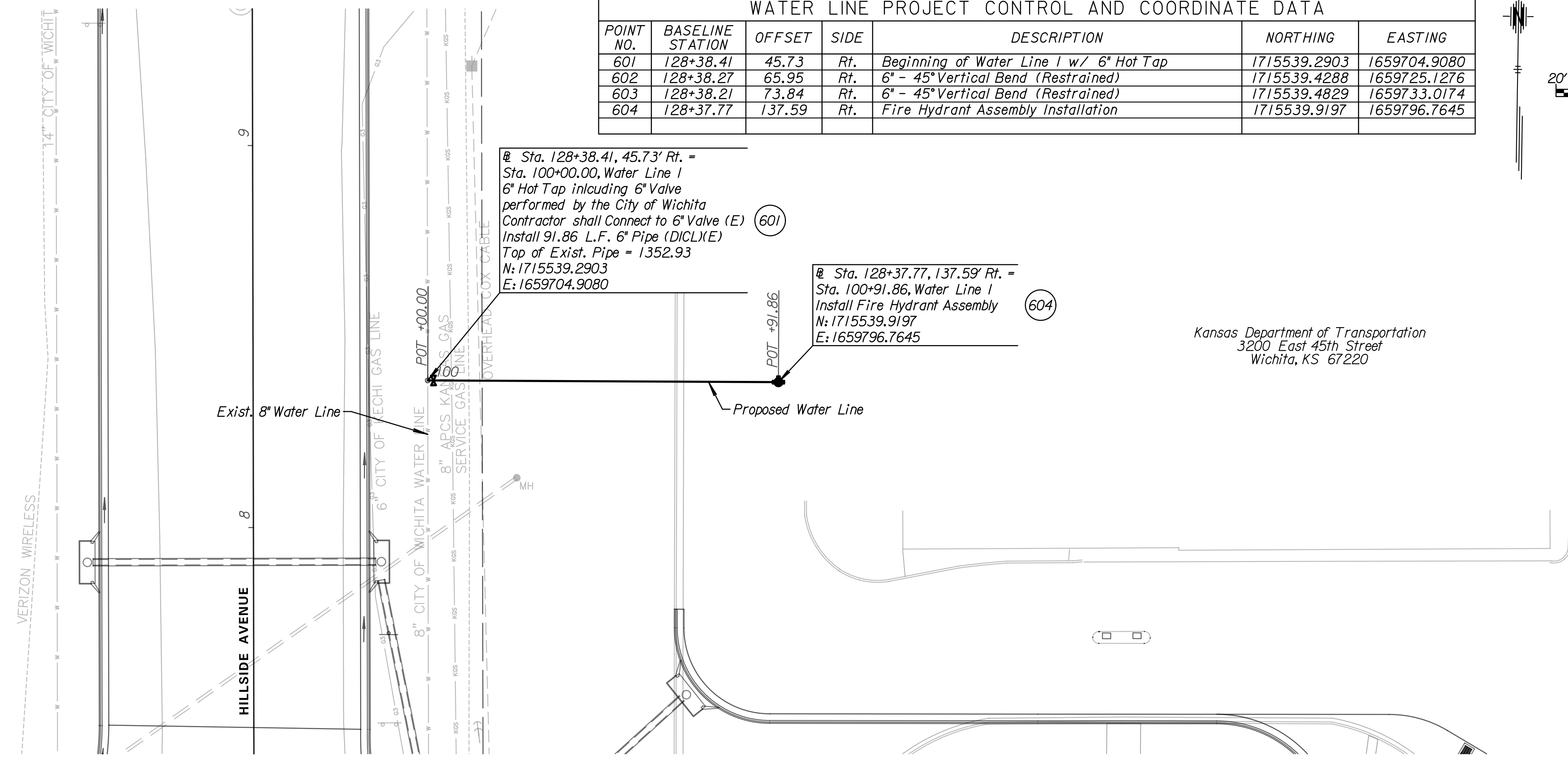
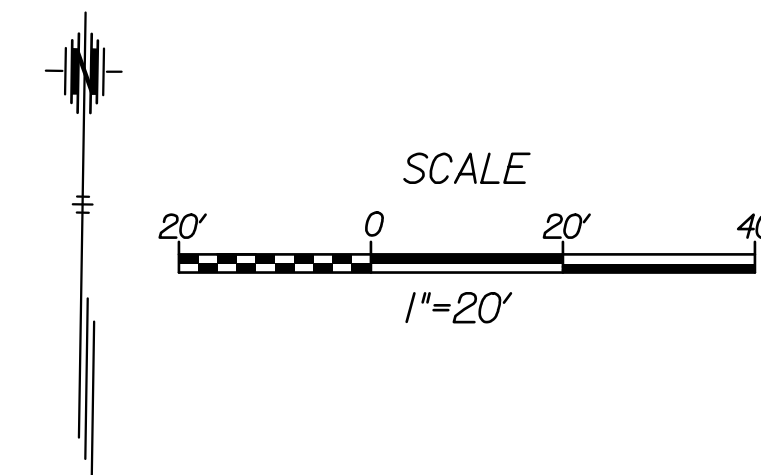
Each bidder shall visit the site of the project before submitting their proposal for the work so that they may inform themselves as to the existing field conditions and the obstacle which might be encountered.

The Contractor shall understand that utilities may have been relocated to new locations and that additional coordination with Utility Companies may be required. The Contractor shall be required to work around existing utilities within the right-of-way.

Taps larger than 12" shall be done by the Contractor, taps 12" or smaller will be done by the City of Wichita unless otherwise noted in the plans.

Kansas Department of Transportation
3200 East 45th Street
Wichita, KS 67220

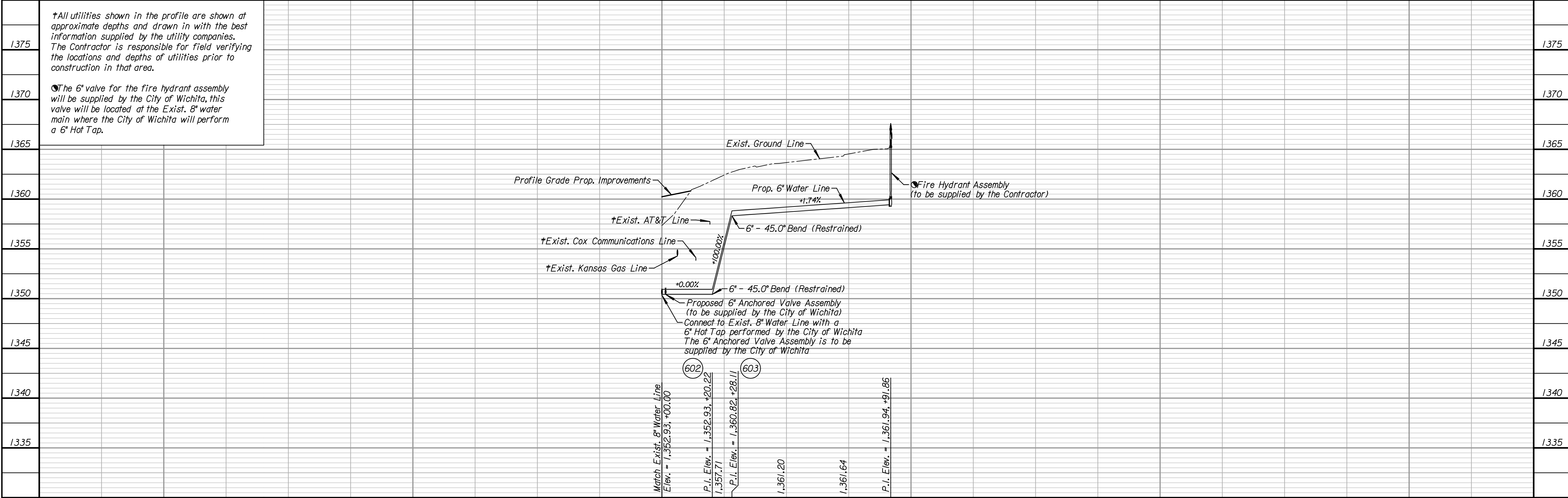
WATER LINE PROJECT CONTROL AND COORDINATE DATA						
POINT NO.	BASELINE STATION	OFFSET	SIDE	DESCRIPTION	NORTHING	EASTING
601	128+38.41	45.73	Rt.	Beginning of Water Line 1 w/ 6" Hot Tap	1715539.2903	1659704.9080
602	128+38.27	65.95	Rt.	6" - 45° Vertical Bend (Restrained)	1715539.4288	1659725.1276
603	128+38.21	73.84	Rt.	6" - 45° Vertical Bend (Restrained)	1715539.4829	1659733.0174
604	128+37.77	137.59	Rt.	Fire Hydrant Assembly Installation	1715539.9197	1659796.7645



Sta. 128+38.41, 45.73' Rt. =
Sta. 100+00.00, Water Line 1
6" Hot Tap including 6" Valve
performed by the City of Wichita
Contractor shall Connect to 6" Valve (E)
Install 91.86 L.F. 6" Pipe (D)(C)(E) (601)
Top of Exist. Pipe = 1352.93
N: 1715539.2903
E: 1659704.9080

Sta. 128+37.77, 137.59' Rt. =
Sta. 100+91.86, Water Line 1
Install Fire Hydrant Assembly (604)
N: 1715539.9197
E: 1659796.7645

Kansas Department of Transportation
3200 East 45th Street
Wichita, KS 67220



†All utilities shown in the profile are shown at approximate depths and drawn in with the best information supplied by the utility companies. The Contractor is responsible for field verifying the locations and depths of utilities prior to construction in that area.

☉The 6" valve for the fire hydrant assembly will be supplied by the City of Wichita, this valve will be located at the Exist. 8" water main where the City of Wichita will perform a 6" Hot Tap.

100+00 101+00

Tran Systems
245 NORTH WACO
SUITE 222
WICHITA, KANSAS 67202
PHONE: 316-303-3000
FAX: 316-303-0166

Professional Engineer
MICHAEL D. BAILEY
LICENSED
20585
7-1-17
KANSAS
PROFESSIONAL ENGINEER

CONSULTANTS:

45TH & HILLSIDE
INTERSECTION IMPROVEMENT
WICHITA, KANSAS
CITY OF WICHITA

REVISIONS:	MARK	DATE	DESCRIPTION

PROJ NO: 87 N-0616-01
SCALE: 1"=20'
DATE: 10/9/2017
DESIGNED BY: TAU
DRAWN BY: TAU
CHECKED BY: MDB

SHEET TITLE:
45TH STREET WATER LINE

SHEET NO.
117
SHEET 117 OF 166