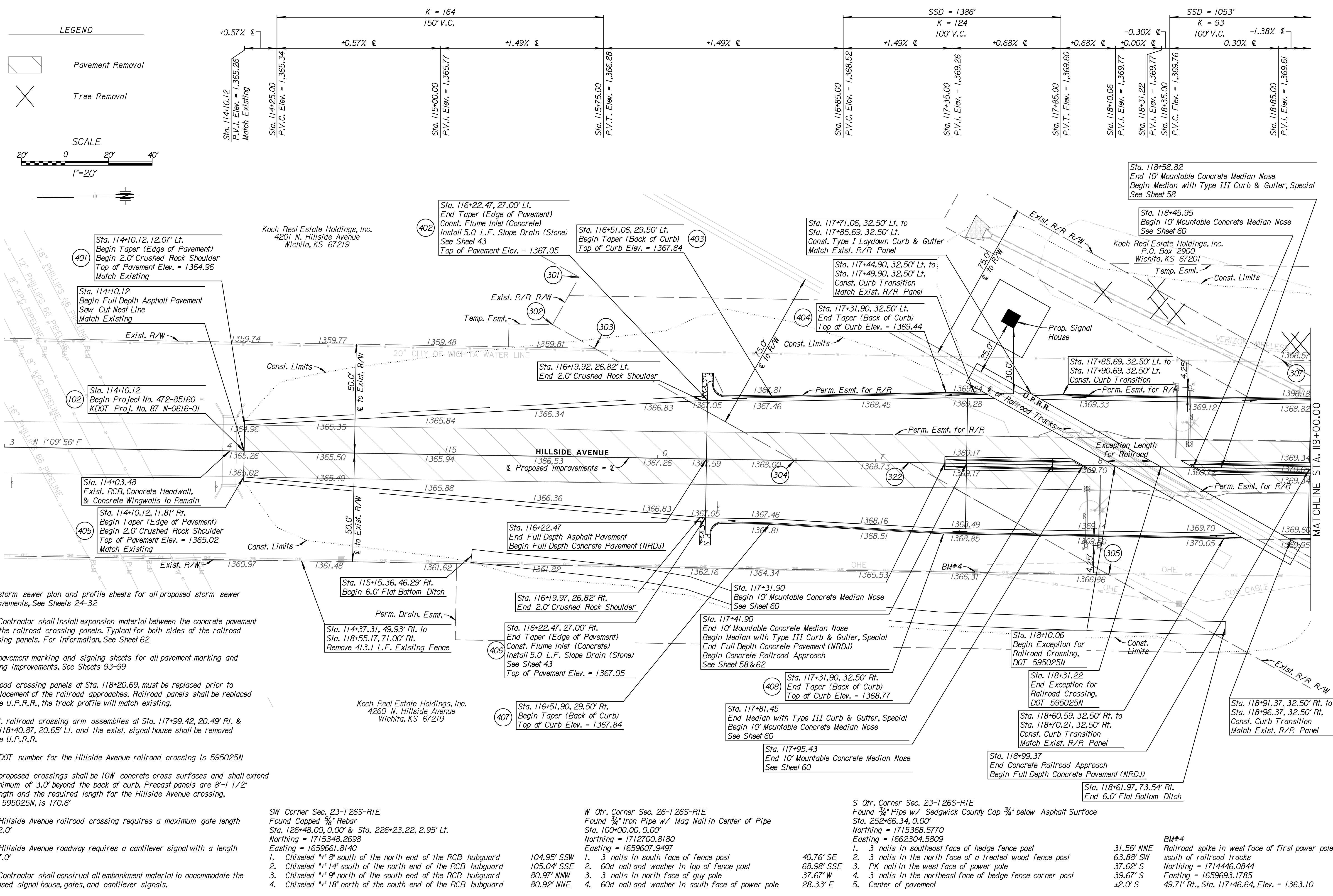


CONSULTANTS:

**45TH & HILLSIDE  
 INTERSECTION IMPROVEMENT**  
 WICHITA, KANSAS  


REVISIONS:	MARK	DATE	DESCRIPTION

PROJ NO: 87 N-0616-01	
SCALE: 1"=20'	
DATE: 10/9/2017	
DESIGNED BY: TAU	
DRAWN BY: TAU	
CHECKED BY: MDB	
SHEET TITLE:	
<b>HILLSIDE AVE.    PLAN &amp; PROFILE</b>	
STA. 114+10.12 TO STA. 119+00.00	
SHEET NO.	
14	
SHEET 14 OF 166	



**Note:**  
 See storm sewer plan and profile sheets for all proposed storm sewer improvements, See Sheets 24-32

The Contractor shall install expansion material between the concrete pavement and the railroad crossing panels. Typical for both sides of the railroad crossing panels. For information, See Sheet 62

See pavement marking and signing sheets for all pavement marking and signing improvements, See Sheets 93-99

Railroad crossing panels at Sta. 118+20.69, must be replaced prior to the placement of the railroad approaches. Railroad panels shall be replaced by the U.P.R.R., the track profile will match existing.

Exist. railroad crossing arm assemblies at Sta. 117+99.42, 20.49' Rt. & Sta. 118+40.87, 20.65' Lt. and the exist. signal house shall be removed by the U.P.R.R.

The DOT number for the Hillside Avenue railroad crossing is 595025N

The proposed crossings shall be 10W concrete cross surfaces and shall extend a minimum of 3.0' beyond the back of curb. Precast panels are 8'-1 1/2' in length and the required length for the Hillside Avenue crossing, DOT 595025N, is 170.6'

The Hillside Avenue railroad crossing requires a maximum gate length of 32.0'

The Hillside Avenue roadway requires a cantilever signal with a length of 27.0'

The Contractor shall construct all embankment material to accommodate the proposed signal house, gates, and cantilever signals.

SW Corner Sec. 23-T26S-R1E  
 Found Capped 3/8" Rebar  
 Sta. 126+48.00, 0.00' & Sta. 226+23.22, 2.95' Lt.  
 Northing = 1715348.2698  
 Easting = 1659661.8140

- Chiseled "x" 8" south of the north end of the RCB hubguard
- Chiseled "x" 14" south of the north end of the RCB hubguard
- Chiseled "x" 9" north of the south end of the RCB hubguard
- Chiseled "x" 18" north of the south end of the RCB hubguard

W Qtr. Corner Sec. 26-T26S-R1E  
 Found 3/4" Iron Pipe w/ Mag Nail in Center of Pipe  
 Sta. 100+00.00, 0.00'  
 Northing = 1712700.8180  
 Easting = 1659607.9497

- 3 nails in south face of fence post
- 60d nail and washer in top of fence post
- 3 nails in north face of guy pole
- 60d nail and washer in south face of power pole

S Qtr. Corner Sec. 23-T26S-R1E  
 Found 3/4" Pipe w/ Sedgwick County Cap 3/4" below Asphalt Surface  
 Sta. 252+66.34, 0.00'  
 Northing = 1715368.5770  
 Easting = 1662304.5809

- 3 nails in southeast face of hedge fence post
- 3 nails in the north face of a treated wood fence post
- PK nail in the west face of power pole
- 3 nails in the northeast face of hedge fence corner post
- Center of pavement

BM\*4  
 31.56' NNE Railroad spike in west face of first power pole  
 63.88' SW south of railroad tracks  
 37.62' S Northing = 1714446.0844  
 39.67' S Easting = 1659693.1785  
 ±2.0' S 49.71' Rt., Sta. 117+46.64, Elev. = 1363.10