

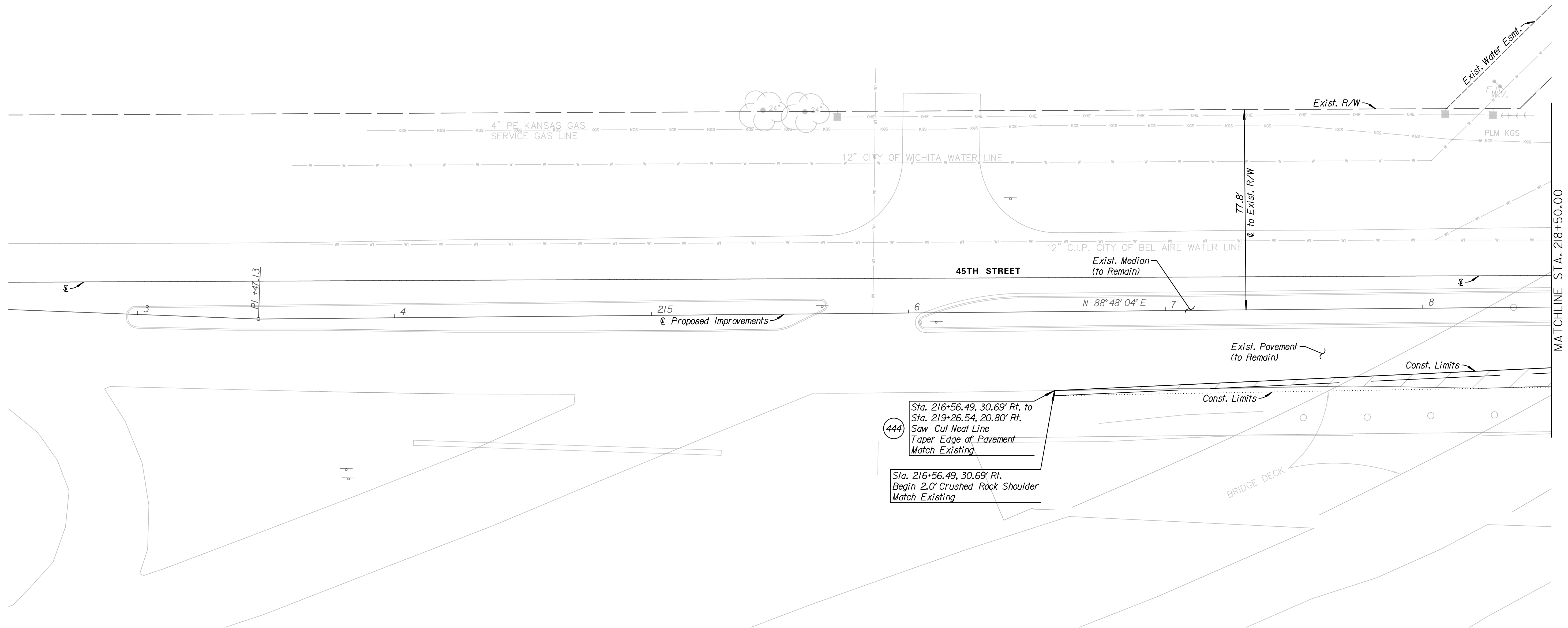
LEGEND

- Pavement Removal
- Tree Removal

**Tran Systems**  
 245 NORTH WACO  
 SUITE 222  
 WICHITA, KS 67202  
 PHONE: 316-303-3000  
 FAX: 316-303-0156

CONSULTANTS:

**45TH & HILLSIDE  
 INTERSECTION IMPROVEMENT**  
 WICHITA, KANSAS



SW Corner Sec. 23-T26S-R1E  
 Found Capped  $\frac{5}{8}$ " Rebar  
 Sta. 126+48.00, 0.00' & Sta. 226+23.22, 0.00'  
 Northing = 1715348.2698  
 Easting = 1659661.8140

- Chiseled \*\* 8" south of the north end of the RCB hubguard
- Chiseled \*\* 14" south of the north end of the RCB hubguard
- Chiseled \*\* 9" north of the south end of the RCB hubguard
- Chiseled \*\* 18" north of the south end of the RCB hubguard

104.95' SSW  
 105.04' SSE  
 80.97' NW  
 80.92' NNE

S Qtr. Corner Sec. 22-T26S-R1E  
 Found  $\frac{1}{2}$ " Pipe 4" below Asphalt Surface  
 Sta. 200+00.00, 0.00'  
 Northing = 1715306.0632  
 Easting = 1657039.5505

- PK nail in the top of an end hedge (former brace) post
- 20d nail in the top of a treated wood pipeline marker post
- 3 nails in the north face of a power pole

46.48' N  
 50.95' SE  
 60.91' SW

W Qtr. Corner Sec. 23-T26S-R1E  
 Found  $\frac{3}{4}$ " Bolt Head 8" below Asphalt Surface  
 Sta. 152+84.71, 0.00'  
 Northing = 1717984.7316  
 Easting = 1659625.3616

- 3 nails in the top of last guard rail fence post
- Concrete nail and disc in the north face of a telephone pole
- PK nail in the top of last guard rail fence post
- 3 nails to north face of power pole
- PK nail in the top of the first wood guard rail post
- North end wearing surface of bridge, on a skew

30.28' ESE  
 48.35' E  
 56.57' SW  
 69.92' SW  
 58.83' SE  
 81.70' S

Note:  
 Contractor shall see the pavement marking and signing sheets for all pavement marking and signing improvements, See Sheets 93-99

Any damage to the existing pavement, existing curb & gutter or existing median called out to remain, shall be fixed by the Contractor at their own expense.

REVISIONS:	MARK	DATE	DESCRIPTION

PROJ NO: 87 N-0616-01  
 SCALE: 1"=20'  
 DATE: 10/9/2017  
 DESIGNED BY: TAU  
 DRAWN BY: TAU  
 CHECKED BY: MDB

SHEET TITLE:  
**45TH STREET  
 PLAN & PROFILE**  
 STA. 216+56.49 TO  
 STA. 218+50.00

SHEET NO.  
**17**  
 SHEET 17 OF 166